

10W wireless charging table lamp

An instruction manual



Multi functional business desk lamp

10W

High-speed wireless charging

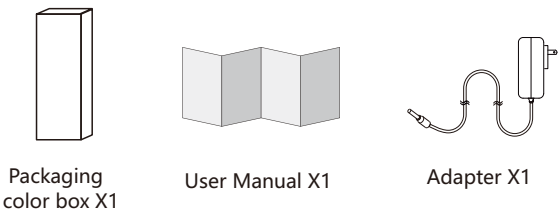
2.1A

USB charging

10W Wireless charging2.1A USB ChargingSliding dimming5 Color temperature modesDual display5-axis rotationDouble night light design

Thank you for choosing our products. To ensure that you can fully understand, install and use this product, you must carefully read the instructions. After reading, please keep it properly for future reference.

Product accessories



Product Information

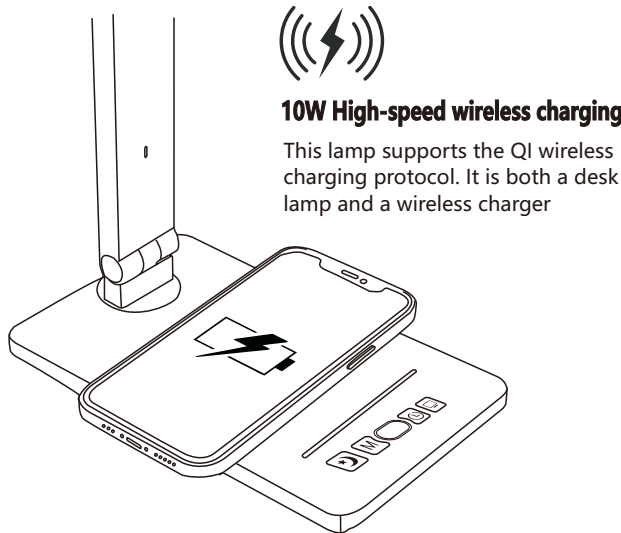
Product model	TX2309	Illumination brightness	680lm
Product material	ABS+PC	Color rendering index	>80Ra
Product color	Black, white	Dimming mode	Sliding dimming
Light source type	Direct luminescence	Light color temperature	3000K-3500K-4200K-5000K-6000k
Wireless charging	10W	input voltage	DC 12V
USB Output	2.1A	Packaging accessories	Power supply, manual, color box,

Instructions

- When the power indicator lamp is powered on, the power indicator lamp will turn blue, indicating that the lamp is turned on.
- Adjust the brightness of the main light source by sliding the blue progress bar to adjust the required brightness scene, and the indicator light will change with the brightness change.
- Touch the **M** key to adjust the color temperature of the light. There are five segments of color temperature cycle switching. The five segments of color temperature are: 3000k-3500-4200k-5000k-6000k.
- The green indicator **⏰** light will be on after touch, indicating that the 45 minute timing function has been turned on and can be turned off by touching again. The use of the timing function will not affect the use of other functions. After the 45 minute countdown, the main light source will automatically turn off the light.
- Short press **⏻** to turn the backlight of the display on or off.

- Touch the **🌙** button to turn on the small night light function. The product is designed with two night lights. The first touch is a triangular luminous body at the end of the lamp head, and the second is a hidden luminous body at the base.
  - When using, touch the first time to turn on both night lights at the same time,
  - Touch the second time to turn off the lamp cap night light, and the base night light will not turn off,
  - The third touch will turn off the base night light and turn on the lamp cap night light,
  - Touch to turn off all night lights for the fourth time.

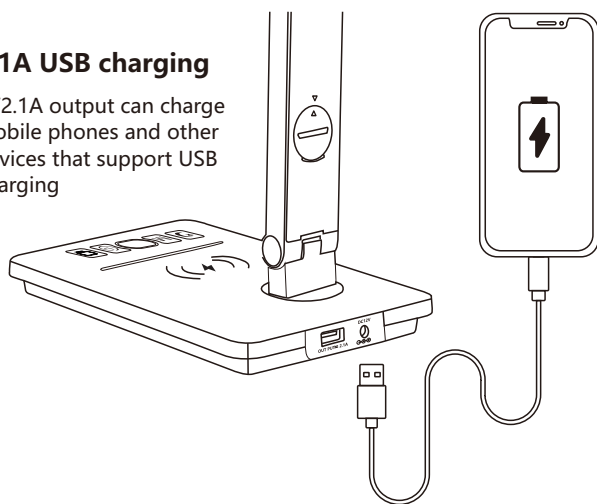
Wireless charging function



USB Charging function

2.1A USB charging

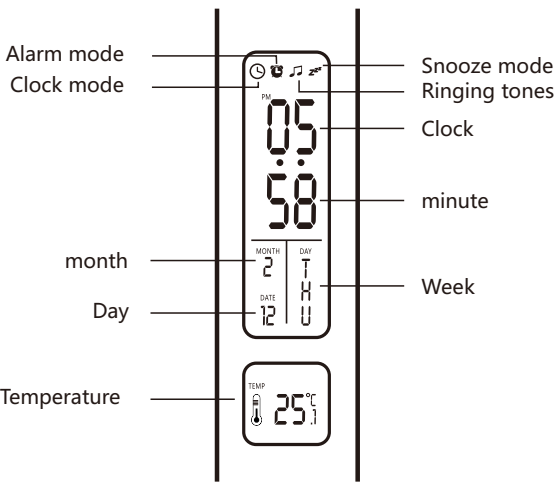
5V2.1A output can charge mobile phones and other devices that support USB charging



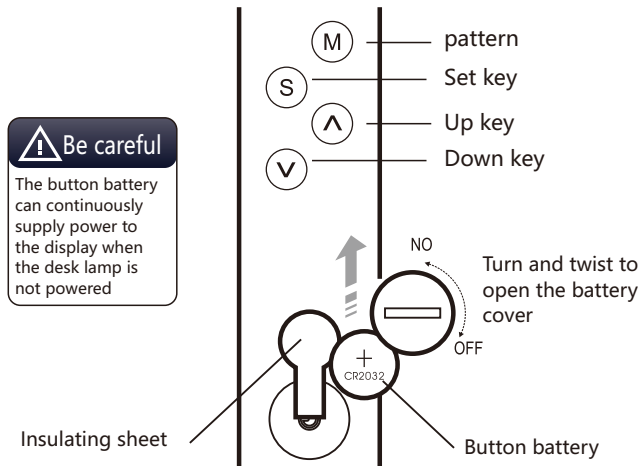
Display screen and functions

Dual display design

Display time, temperature, date, alarm clock and other important information everywhere



Back setting and battery compartment



Clock and date settings

- Press **M** to switch between clock mode and alarm mode
- In clock mode (displayed in the upper left corner **🕒**) Press **⌚** to enter the time setting mode. Press **⬆️** **⬆️** to adjust the time, and then press **⌚** to enter the next option. The setting sequence is hour minute year month day

Alarm and snooze function settings

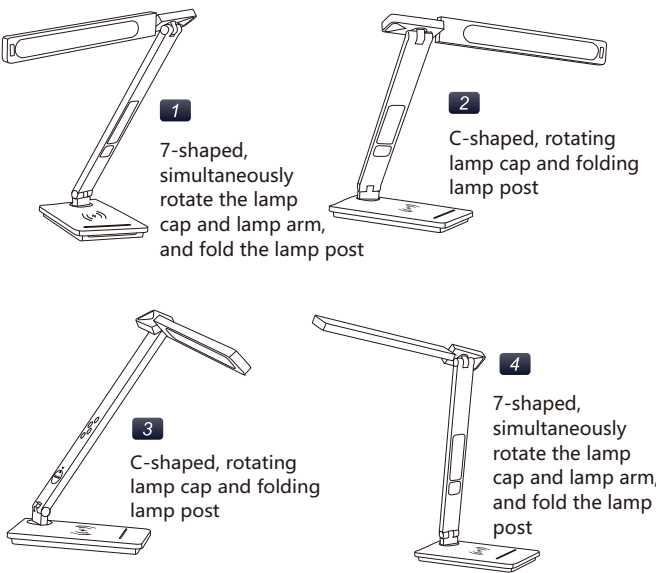
- Press **M** key to enter alarm mode, **S** key to set the alarm time. Then, use the **⬆️** **⬆️** key to adjust the hour and minute. Press **S** key to confirm and enter snooze mode. Next, press the **⬆️** **⬆️** key to select the snooze time. Press **S** key to confirm and enter the alarm ring selection. Use the **⬆️** **⬆️** key to select the ring tone. Press **S** key again to finish the alarm setting.
- After set the alarm, snooze, and ringing tone, press **⬆️** **⬆️** key to turn on/off the snooze and alarm ring mode. Confirmation icons shown the upper right conner.
- In clock mode , press **⬆️** key to switch between 12 hour or 24 hour clock .Press the **⬆️** key to switch between Celsius and Fahrenheit.
- In the alarm mode, press the **⬆️** **⬆️** key to turn on or off the alarm and snooze modes.

Simultaneous rotation of five axes

Five axis linkage can fold out a variety of lighting angles, and the lighting angles are more extensive

The lamp cap supports 180 ° left and right rotation, and the lamp arm folds up and down 180 ° ,

The lamp arm rotates 180 ° left and right, the lamp post folds 180 ° , and the lamp post rotates 180 ° (the following are just a few of them, and more angles can be tried by yourself)



**Be careful** Do not rotate the angle of the lamp excessively to avoid damage

Display screen and functions



Matters needing attention

- Do not disassemble the product by yourself to avoid electric shock.
- Please use the special transformer and power socket specified by the manufacturer to maintain the normal operation of the product.
- Do not over adjust the movable joint of the product to avoid damage to the movable joint of the lamp.
- Please do not place the product on an unstable desktop during use to prevent the product from falling and being damaged.
- Do not place the product in a place with high temperature or high humidity. To avoid eye injury.
- Please do not look directly at the LED bulb light source.
- In case of the following conditions, please unplug the power cord and stop using.
  - The power cord or power plug is damaged or damaged.
  - This lamp holder is affected with damp or rain.
  - When the shell and movable joint of the lamp holder are damaged.
  - safety factors such as smoke and sparks may occur to the lamp holder.
- If you have any questions, please ask the customer service personnel.



This device complies with Part 15 of the FCC Rules. Operation is subject to the following two conditions: (1) this device may not cause harmful interference, and (2) this device must accept any interference received, including interference that may cause undesired operation

NOTE: This equipment has been tested and found to comply with the limits for a Class B digital device, pursuant to Part 15 of the FCC Rules. These limits are designed to provide reasonable protection against harmful interference in a residential installation. This equipment generates, uses and can radiate radio frequency energy and, if not installed and used in accordance with the instructions, may cause harmful interference to radio communications. However, there is no guarantee that interference will not occur in a particular installation.

If this equipment does cause harmful interference to radio or television reception, which can be determined by turning the equipment off and on, the user is encouraged to try to correct the interference by one or more of the following measures:

- Reorient or relocate the receiving antenna.
- Increase the separation between the equipment and receiver.
- Connect the equipment into an outlet on a circuit different from that to which the receiver is connected.
- Consult the dealer or an experienced radio/TV technician for help.

Warning: changes or modifications not expressly approved by the party responsible for compliance could void the user's authority to operate the equipment

#### Radiation Exposure Statement

This equipment complies with FCC radiation exposure limits set forth for an uncontrolled environment.

This equipment should be installed and operated with minimum distance 20cm between the radiator and your body.