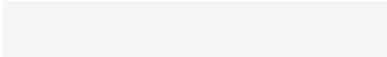
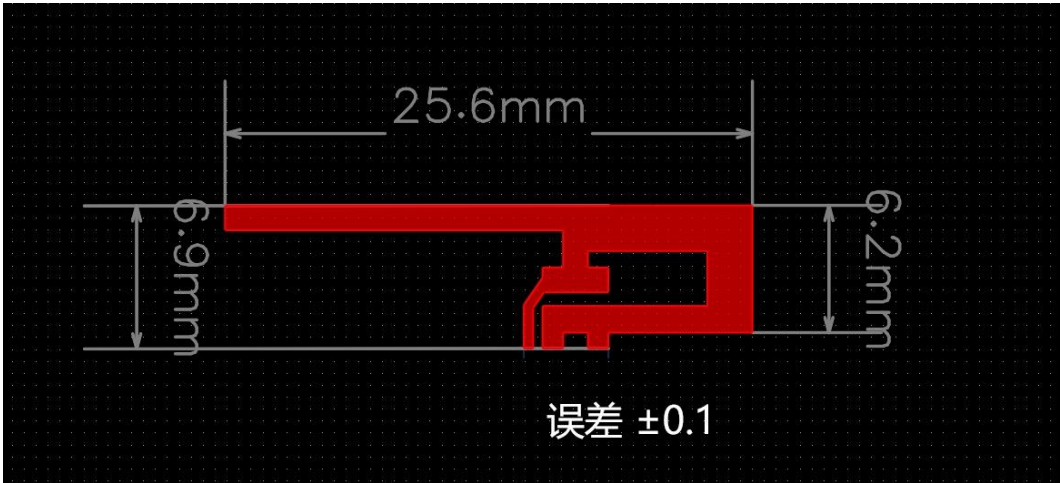


1. Antenna Description:

Antenna type	PCB antenna
Model	P10 full-color LED sign
Frequency range	2400-2500MHz
Manufacturer	Shenzhen Shengcai Optoelectronics Co., Ltd
Address	1-1, No. 1 Jiuxiang, Laiwushan New Village, Dalang Street, Longhua District, Shenzhen City, Guangdong Province, China
ANT Peak Gain	3 dBi

2. Antenna Photo:



### 3. Test Equipment & Conditions

#### 3.1 Test instrument

VSWR is tested using Agilent E5071B connected to a hand mechanism, and the status is free space.

#### 3.2 Test environment and methods

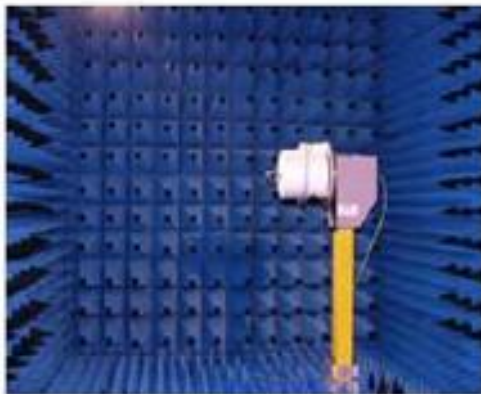
Dark room specifications: ETS-743

TD-SCDMA test equipment: StarPoint SP6010/Agilent 8960

LTE-TDD/FDD-SCDMA test equipment: StarPoint SP8011/CMW500

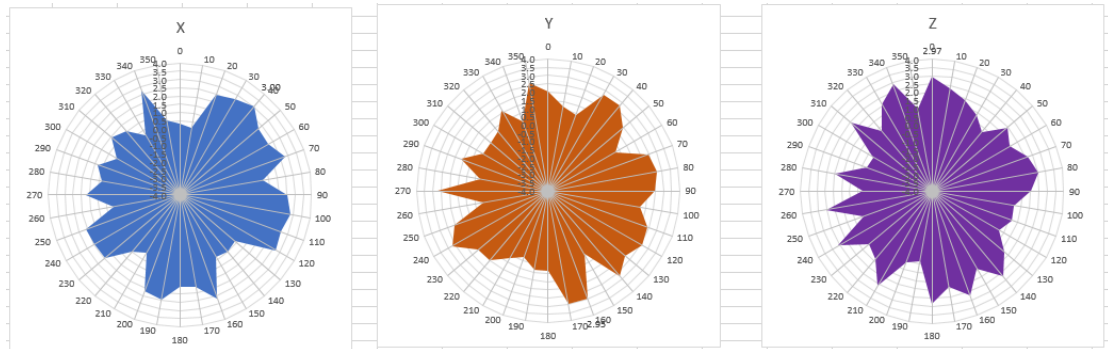
WCDMA/GSM/CDMA test equipment: Agilent 8960

Passive efficiency testing equipment: Agilent Technologies E5071B

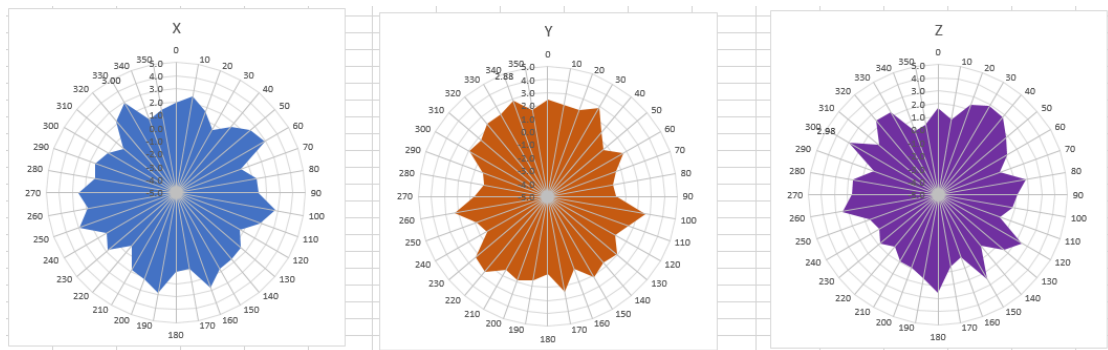


## 4 . Antenna Radiation Pattern

2400MHz



2450MHz



2500MHz

