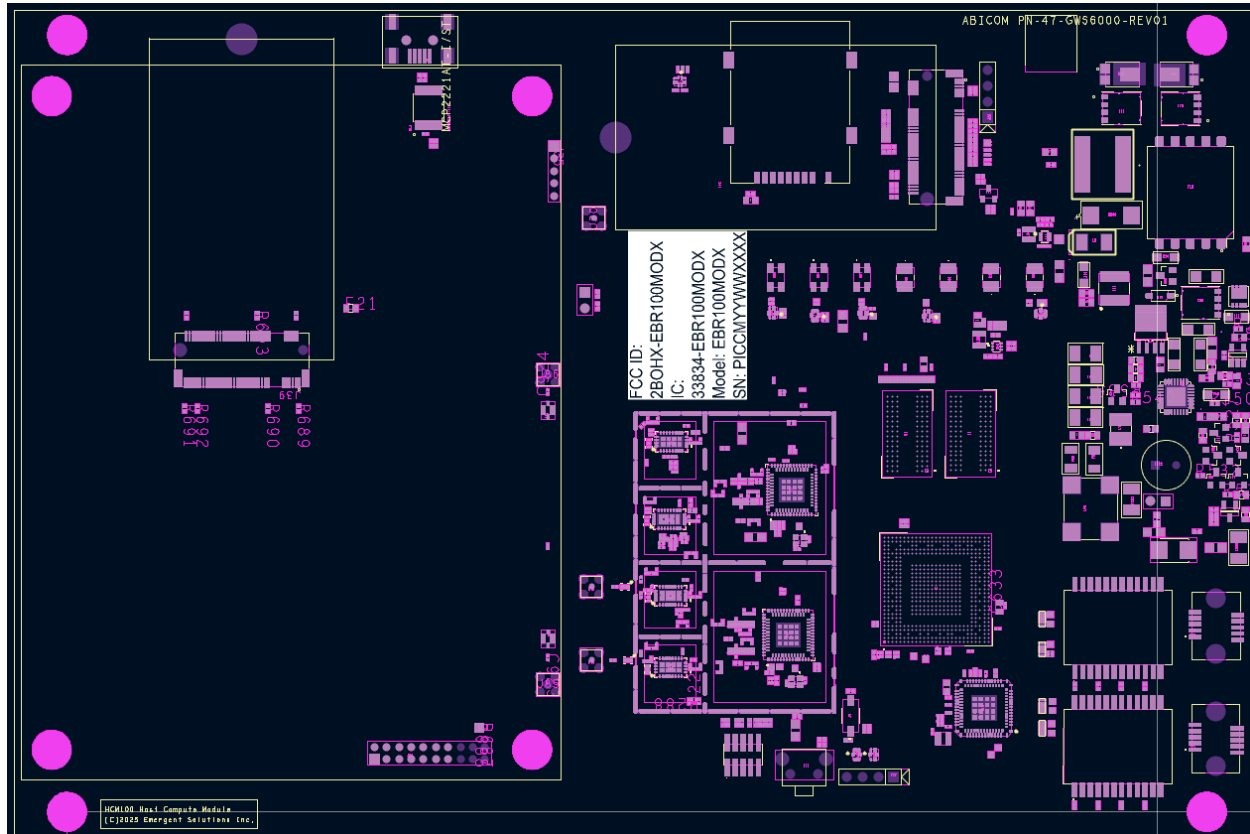


EBR100 Stacked Module Label Specifications

Module label (ESI PN 50-0072-XX) is placed on topside in area shown. This area is ~30mm x 25mm in size.



Contents of label are as follows:

FCC ID: 2BOHX-EBR100MODX

IC: 33834-EBR100MODX

Model: EBR100MODX

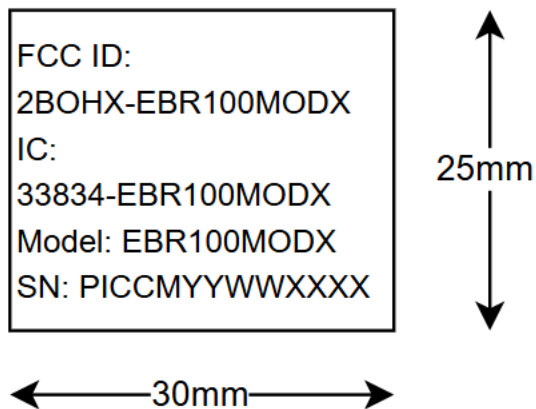
SN: PICCMYYWWXXXX

Where SN (serial number) follows our ESI format consisting of:

- PIC: 3 numeric digit product identification code (317 in this case),
- CM code: 2 letters indicating CM (contract manufacturer) where module was assembled (VL for Venture labs)
- YY: 2 numeric digit year code (YY) (e.g. 25 for 2025) indicating year of manufacture,

- WW: 2 numeric digit ISO week code (WW) indicating week of assembly (from 1 to 52)
- XXXX: 4 numeric digit sequence code, starting at 0001 and incrementing by 1 for each module of that PIC manufactured that week by that CM, thus creating a unique SN for each module.

Sample of label shown below.



Recommend printing using **Arial Narrow 9 point font**, or equivalent. Also note, the “O” in 2BOHX and the “O” in MODX are the letter O, while the “00” in EBR100 are numbers 00.

Revision History:

Revision	Date	Description
0	2025-06-25	Initial release
1	2025-07-30	Added label PN (50-0072)