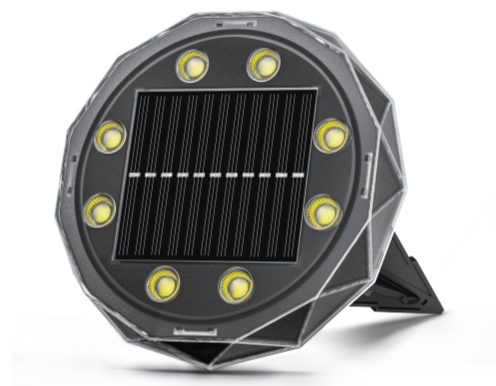


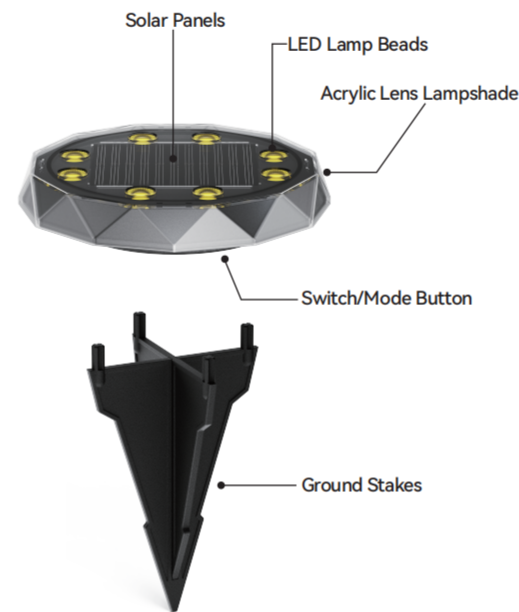
正面

MULTICOLOR SOLAR GROUND LIGHTS USER MANUAL




IMPORTANT: Please read this manual carefully before beginning of this product.Keep this manual for future reference.

Product Profile



Switch Button Operation Instructions

1.  key is a key for switch and function operations.
2. Before using the remote control, you need to turn on the switch at the bottom of the product.

How To Turn The Light On/Off ?

In order to verify that the light is ready, make sure the switch is on . (Press the bottom switch to turn it on, then place the solar light in the dark to see if it turns on.)

Tip 1: When the switch is in the "OFF" state, the solar light cannot be charged.

Tip 2: When the switch is in the "OFF" state, the remote contro cannot control this product.

Tip 3: If the light isn't lit up, you should place it under sunlight for 2 days to charge up the battery.(make sure the switch is on)

How Do I Switch Light Colors/Modes?

- How to choose the light color, Please press the on/off key on the back of the solar light to select the light and mode you need.
- 15 Light Color Sequences: White light - Natural light - Warm light - Red light - Green light - Blue light - Pink light - Light green light - Light blue light - Purple light - Cyan-orange light - Sky blue light - Dark purple light - Orange light - Cyan-green light
- 2 Light Change Modes: RGB (Fade) + RGB (Jump)

反面

Notice:

! **Note:** Please choose a sunny place for installation, Do not install in a cool place, otherwise charging will not be possible.

1. Turn the switch at the bottom of the LED light to "ON" to ensure that the solar light can be charged normally.
2. Solar panels should be installed in places exposed to direct sunlight.
3. Charging efficiency varies in different weather and seasons.
4. The solar panel will get more sunlight towards the southwest than towards the northeast.
5. Choose an outdoor location at night, away from street lights and other light sources. This may prevent the product from automatically lighting up at night.
6. The packing contains small parts that could be swallowed by children, please keep the packaging material away from children or pets.

Warranty & Customer Support

If you need any assistance, please contact our support team at the address blow with your Amazon order number

ON/OFF
Turn on/off the light

RGB Light Change Modes
RGB Fade - RGB Jump



3 Color Temperatures Adjustable
White Light - Wam Light
Natural Light

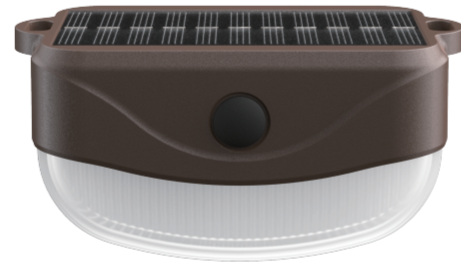
12 Color RGB Light Options
Red light - Green light - Blue light
Pink light - Light green light
Light blue light - Purple light
Cyan-orange light - Sky blue light
Dark purple light - Orange light
Cyan-green light

Remote Control Operation Instructions

1. The remote control can be used to adjust the operation settings of light color and function mode, and to turn the lights on and off.
2. The remote control range is within 50 feet, and multiple products can be remotely controlled at the same time. However, obstruction by objects will affect the sensitivity of the remote control.

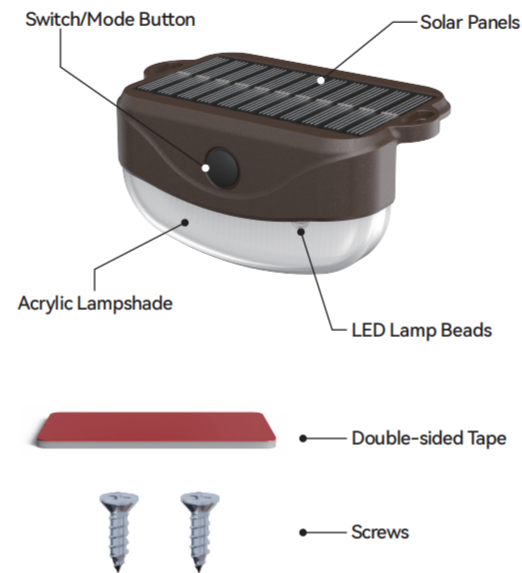
正面

MULTICOLOR SOLAR DECK/FENCE LIGHTS USER MANUAL




IMPORTANT: Please read this manual carefully before beginning of this product.Keep this manual for future reference.

Product Profile



1

Switch Button Operation Instructions

1.  key is a key for switch and function operations.
2. Before using the remote control, you must first turn on the product switch.

How To Turn The Light On/Off ?

In order to verify that the light is ready, make sure the switch is on . (Press the switch to turn it on, then place the solar light in the dark to see if it turns on.)

Tip 1: When the switch is in the "OFF" state, the solar light cannot be charged.

Tip 2: When the switch is in the "OFF" state, the remote control cannot control this product.

Tip 3: If the light isn't lit up, you should place it under sunlight for 2 days to charge up the battery.(make sure the switch is on)

How Do I Switch Light Colors/Modes?

- How to choose the light color, please press the on/off button of the solar light and select the desired light and mode.
- 15 Light Color Sequences: White light - Natural light - Warm light - Red light - Green light - Blue light - Pink light - Light green light - Light blue light - Purple light - Cyan-orange light - Sky blue light - Dark purple light - Orange light - Cyan-green light
- 2 Light Change Modes: RGB (Fade) + RGB (Jump)

2

反面

Notice:

1. Turn on the product switch to ensure that the solar light can be charged normally.
2. Solar panels should be installed in places exposed to direct sunlight.
3. Charging efficiency varies in different weather and seasons.
4. The solar panel will get more sunlight towards the southwest than towards the northeast.
5. Choose an outdoor location at night, away from street lights and other light sources. This may prevent the product from automatically lighting up at night.
6. The packing contains small parts that could be swallowed by children, please keep the packaging material away from children or pets.

Warranty & Customer Support

If you need any assistance, please contact our support team at the address blow with your Amazon order number

3

ON/OFF
Turn on/off the light

RGB Light Change Modes
RGB Fade - RGB Jump



3 Color Temperatures Adjustable
White Light - Warm Light
Natural Light

12 Color RGB Light Options
Red light - Green light - Blue light
Pink light - Light green light
Light blue light - Purple light
Cyan-orange light - Sky blue light
Dark purple light - Orange light
Cyan-green light

4

Remote Control Operation Instructions

1. The remote control can be used to adjust the operation settings of light color and function mode, and to turn the lights on and off.
2. The remote control range is within 100 feet, and multiple products can be remotely controlled at the same time. However, obstruction by objects will affect the sensitivity of the remote control.

5

FCC Warning:

This equipment has been tested and found to comply with the limits for a Class B digital device, pursuant to part 15 of the FCC Rules. These limits are designed to provide reasonable protection against harmful interference in a residential installation. This equipment generates, uses and can radiate radio frequency energy and, if not installed and used in accordance with the instructions, may cause harmful interference to radio communications. However, there is no guarantee that interference will not occur in a particular installation. If this equipment does cause harmful interference to radio or television reception, which can be determined by turning the equipment off and on, the user is encouraged to try to correct the interference by one or more of the following measures:

- Reorient or relocate the receiving antenna.
- Increase the separation between the equipment and receiver.
- Connect the equipment into an outlet on a circuit different from that to which the receiver is connected.
- Consult the dealer or an experienced radio/TV technician for help.

Caution: Any changes or modifications to this device not explicitly approved by manufacturer could void your authority to operate this equipment.

This device complies with part 15 of the FCC Rules. Operation is subject to the following two conditions:

(1) This device may not cause harmful interference, and (2) this device must accept any interference received, including interference that may cause undesired operation.

This equipment complies with FCC radiation exposure limits set forth for an uncontrolled environment. This equipment should be installed and operated with minimum distance 0cm between the radiator and your body.