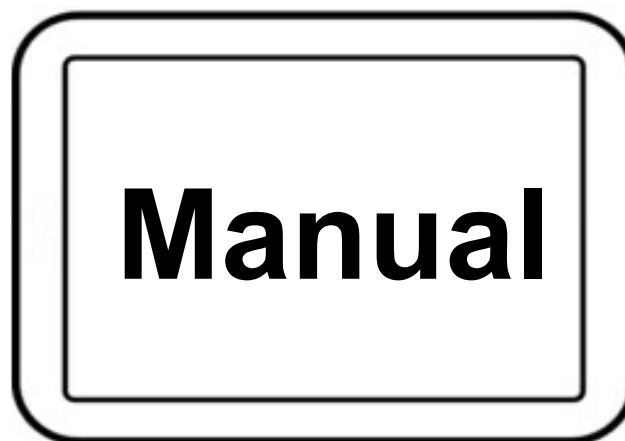
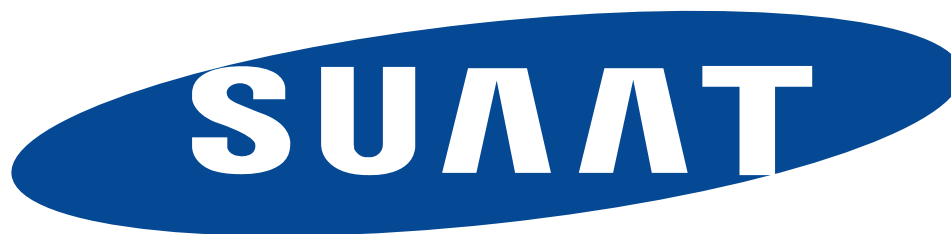


S10



**When using the tablet for the first time, skip the WiFi connection,
After completing the initialization, connect the WiFi in the system**

Please read this instruction thoroughly before using this product
and keep it for future reference.



FUNCTION OVERVIEW	01
GETTING STARTED	01
HOME SCREEN	02
SETTING BASICS	02
NETWORK CONNECTION	04
APP MANAGEMENT	04
INTERNET NAVIGATION	04
MULTIMEDIA	04
SPECIFICATION	05
TROUBLESHOOTING	05
GUARANTEE	06

English



How to connect the mouse?

1. Open the battery cover of the mouse, you will find the mouse receiver.
2. Install the 2 batteries(AA). Then turn on the mouse switch.
3. Put the mouse receiver into the OTG adapter included in the package.
4. Plug the OTG adapter into the charging port of the tablet.

We record video about how to connect the mouse, if you need video, please contact us **suaat@outlook.ie**

How to use a physical keyboard?

1. Turn on the keyboard switch.
2. Click the 'Connect' button in the upper right corner of the keyboard;
3. Open 'Settings', then enter the Bluetooth function of the tablet and click 'Pair devices'.
4. Find the device named 'Bluetooth Keyboard' and tap Connect.

We record video for keyboard connection, if you need video, please contact **suaat@outlook.ie**

If the accessories are damaged, please send us an email. We will send you new accessories, thank you. **suaat@outlook.ie**

Tips:

When the tablet's battery power drops to 15%-20%, we recommend suspending tablet use and charging the tablet. Continuing to use the tablet when the charge reaches more than 80% can keep the tablet's battery in a healthy state and prolong its lifespan.

How to take a screenshot?

Press the power button and the volume down button at the same time.

How to restore factory settings? (Note that this will erase all data on the tablet.)

1. Open 'Settings'.
2. Open 'System'.
3. Click 'Advanced Options' and then 'Reset Options'.
4. Click 'Wipe all data (factory reset)'.

If you need more help, you can ask us specific questions. We will send you solutions based on specific problems. You can find us by email:

suaat@outlook.ie



Getting started

Before Power up the Tablet, ensure that it is fully charged.

1. Reset
2. Power On/Off
3. Volume +
4. Volume -
5. Type-C port
6. 3.5mm AUX Slot
7. Front Camera
8. Double Speaker
9. Rear camera
10. Flash

Power On/Off

Press and hold the power button for 2-3s to turn on your tablet: Select your language and set up your tablet following the start guide:

Press and hold the power button for 2s, then release it. It will show Power Off and Restart on the screen. Tap Power Off to turn off the tablet.

Press and hold the power button for 5s to do a forced shutdown when it's frozen.

Battery

Rechargeable Li-ion battery is installed in the tablet.

We suggest you drain the battery completely once a month if only use your tablet occasionally.

DO NOT dispose the tablet in a fire.

Sleep Mode

Simply press the power button once to switch the tablet to the Sleep Mode when the tablet is ON; press again to wake it up.

Tip :

Go to Settings>Display>Sleep to set the time of Sleep Mode.

HOME SCREEN

Icons on the Bottom Menu



1. Back
- 2.Home Screen
3. Recent Activities
4. Apps Collection

Wallpapers, Widgets and Home Settings

Tap and hold the empty section of a Home screen. WALLPAPERS, WIDGETS and HOME SETTINGS will be displayed
 Tap WALLPAPERS icon to change the current wallpaper of the tablet from the default wallpapers or your photos,

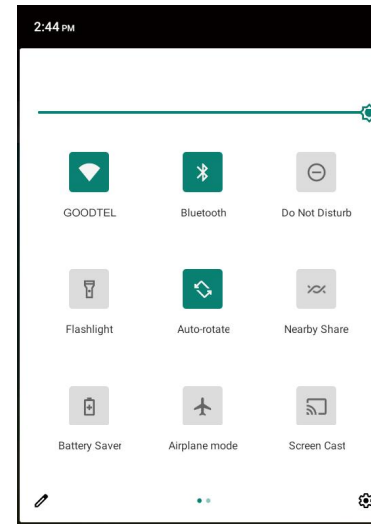
Tap WIDGETS, touch and hold any widget (e.g.Clock), then slide and add it to a Home screen. Remove it by sliding to X.

Tap HOME SETTINGS to enable/disable adding icon to Home screen. This is applicable to the new Apps installed from Play Store.

SETTING BASICS

Quick Settings

Swipe down from the top of the screen to access Quick Settings



- 📶 : Wi-fi Tap to connect to a wireless network
- 📶 :Bluetooth. Enable/disable the Bluetooth on the tablet; pair with other Bluetooth device or view paired devices
- 🔇 :Do Not Disturb. Block sounds or vibrations according to the different modes (Total silence, Alarms only and Priority only)
- 🔄 : Portrait /Auto-rotate/ Landscape
- 🔋 : Battery Saver.Enable/disable the low power mode
- ✈️ :Airplane Mode. Turn on/ off all the network connectivity

Tap the ✎ icon to change the options in the Quick Settings.

More Settings

Swipe down from the top of the screen, then tap the ⚙️ icon to enter the detailed Setting interface. Or, tap the Setting icon on the Home screen to enter.

Network & Internet

- * Connect to any working Wi-Fi
- * Enable/disable the Airplane Mode
- * Monitor the data usage

Connected devices

- * Turn on/off Bluetooth
- * Pair with Bluetooth devices and check the paired devices
- * Cast device and check the cast device
- * Add and check printers

Apps & notifications

- * Check the Apps recently opened
- * Check **all** the Apps on the tablet
- * Set the App permissions
- * Uninstall the third-party Apps
- * Adjust App notification settings
- * Clear the cache of the Apps

Battery

- * Display the remaining battery power as a percentage
- * Enable/disable the Battery Saver
- * Adjust the time of entering the Sleep Mode

Display

- * Adjust the screen brightness
- * Adjust the font size and display size
- * Set a Screensaver
- * Change the wallpaper
- * Adjust the time of entering the Sleep Mode


Sound

- * Set volume levels for media, alarms, and notifications
- * Set preferences of Do Not Disturb
- * Set the tunes for notifications and alarms
- * Turn on/off the sound for screen lock, charging and touch

Screenshot

- * Set the delay time for screen shot
- * Set the location folder of screen shots
- * Switch on/off Show the screen shot button in the statusbar

Tip :

Press the volume down button and the power button together to capture a screen shot. Or, switch on show the screen shot button in the statusbar, then tap the  icon on the bottom menu to capture a screen shot.

Storage

- * View and manage your storage space

Security&location

- * Set screen lock pattern,e.g.password, PIN,Swipe etc.
- * Enable/disable **all** the notifications while the screen is locked
Enable / disable services.
- * Turn on/off the location services for specific Apps
- * Set to show/hide the password when input a password

Users&accounts

- * Add and manage the user accounts on your tablet

Accessibility

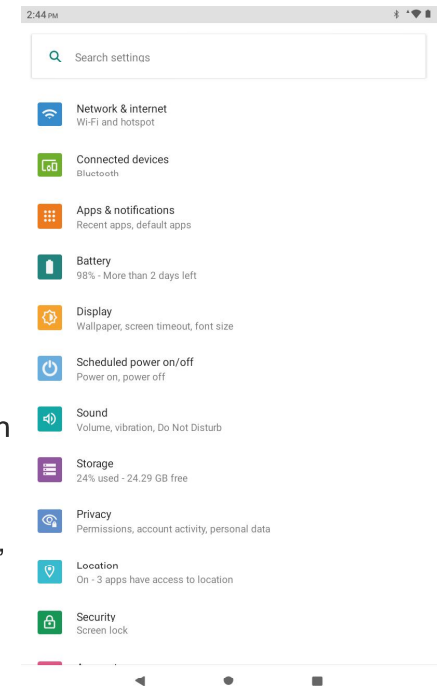
- * For vision and hearing impaired users, manage settings for Screen readers, Subtitle, and more

Google

- * Set the preferences for Google related services

System

- * Set Language.
Tap Languages&input>Languages>+add, a language to add your language.After adding,hold and slide to the top to change the language.
- * Restore factory setting.
Tap Reset options> Erase **all** data (factory reset) to restore the factory setting.
- * Set the date and time
- * Turn on/off the Backup
- * Check the detailed information about the tablet

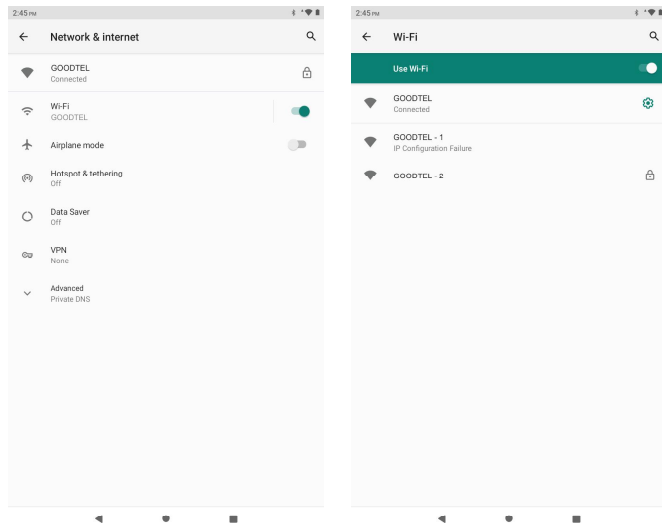


◆ NETWORK CONNECTION

Go to Wi-Fi settings in the Settings interface or directly enter Quick Settings.

Wi-Fi Connection

1. Tap Network and Internet and turn on the Wi-Fi, All Wi-Fi connections available will be listed;
2. Select your Wi-Fi and input the correct password.



Please turn on the Bluetooth on your tablet and your bluetooth device.

1. Tap Connected devices and turn on the Bluetooth;
2. Tap Bluetooth>+pair new device to enter the scanning interface.
Devices available will be displayed after a few seconds;
3. Tap the desired device to get a pairing code and click PAIR on both devices. An automatic connection will be applied to some devices.

◆ APP MANAGEMENT

App Download and Installation

1. Tap and open Play Store on the Home screen;
2. Log into your Google account, search and download the App you need.

App Management

Move the App

Tap and hold the App, then slide it to a desired screen.

Remove the App from the Home screen

Tap and hold the App, then slide to X to remove it from your Home screen.

Uninstall the App

Tap and hold the App, then slide to the trash bin to uninstall the App.

Clear the Cache of the App

1. Go to Settings>Apps¬ifications;
2. Select an App>Storage>CLEAR CACHE.

◆ INTERNET NAVIGATION

Please make sure the tablet is connected to a working Wi-Fi network before navigating the Internet.

You may use the Chrome™ browser pre-installed or use another browser downloaded

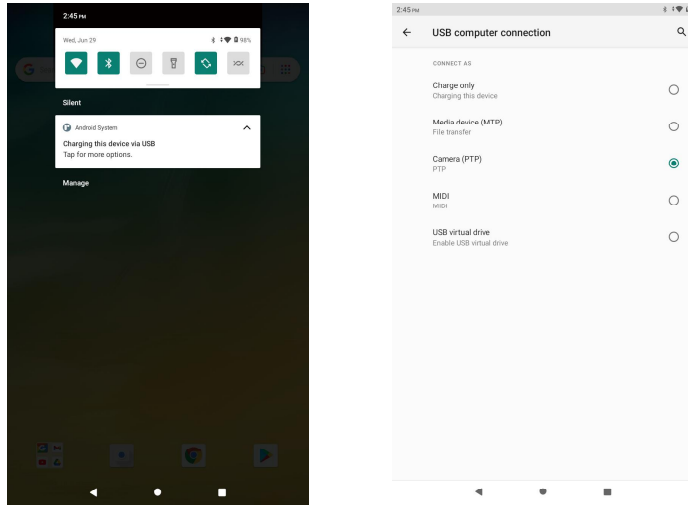
◆ MULTIMEDIA

Connecting to the Computer

1. Connect your tablet to the computer with USB cable and go to Quick Settings;
2. Tap Android"Systems.USB charging this device>Tap for more options>Use USB to;
3. Select Transfer files;
4. Go to your computer and find your tablet S10 to transfer files between your tablet and computer.

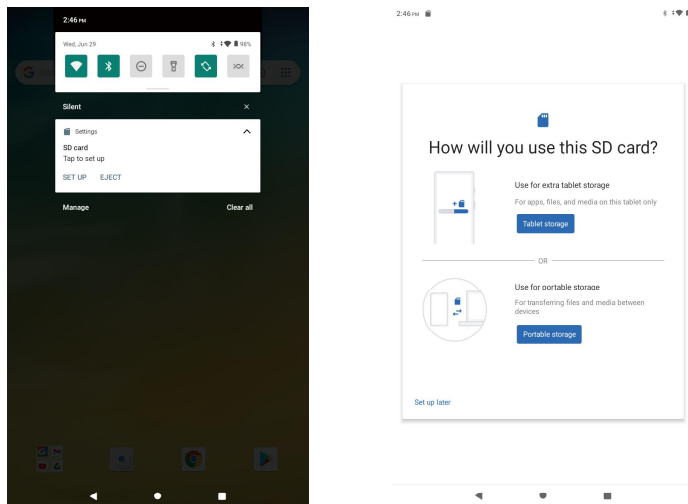
Tip :

Select Charging this device to charge your tablet;
Select Transfer photos(PTP)to transfer photos between the devices.



Connecting to an External Device

- 1.1.Install a micro SD card into the micro SD card slot and go to Quick Settings;
- 2.Tap New micro SD card detected or Set Up prompt;
- 3.Set the micro SD card as a portable storage by selecting Use as portable storage. Enter micro SD Card storage to move files between the card and tablet.



SPECIFICATION

Size	10.1 IN	Connection	Wi-Fi
RAM	22GB(6GB+16GB)	ROM	128GB
Ports	Type C		
Display	IPS	Front-facing Camera	5MP
Network	2.4G+5G 802.11 a/b/g/n/ac		
Back Camera	8MP	Power Supply	DC 5V 2A
Battery	8000mAh	Touch	Multi-touch
Operating System	Android		

TROUBLESHOOTING

Q1.The tablet doesn't power on .

- * Reboot your tablet after charging for 30 minutes;
- * Press the power button to check if the tablet is in the Sleep Mode;
- * Press and hold the power button for 5s to turn on tablet, then reboot it;
- * Press the Reset button with a pin to reboot the tablet.

Q2.The tablet doesn't charge.

- * Make sure the USB cable is properly plugged into the charging port;
- * Try another compatible USB cable and adapter.

Q3.Error message occurs during the operation.

- * Uninstall the APP with the error message, then download and install again;
- * Press the Reset button with a pin to reboot the tablet.

Q4.The tablet cannot be detected by the computer.

- * Make sure the tablet is powered on;
- * Try another USB cable;
- * Try another USB port on the computer;
- * Instead of Charge this device,choose Transfer files or Transfer photos (PTP) when connecting the tablet to the computer.

Q5.The tablet cannot connect to the Wi-Fi.

- * Make sure the Wi-Fi in your tablet is ON;
- * Make sure you input the correct password when connecting the Wi-Fi;
- * Restart the router;
- * Make sure there is no filter setting or device connection limitation in the setting of the router;
- * Forget the current Wi-Fi,reset the router and connect the Wi-Fi again.

Q6.The storage space of the tablet is not enough.

- * Delete the Apps you don't use;
- * Clear the cache of the Apps regularly;
- * Install an microSD card to expand the storage.

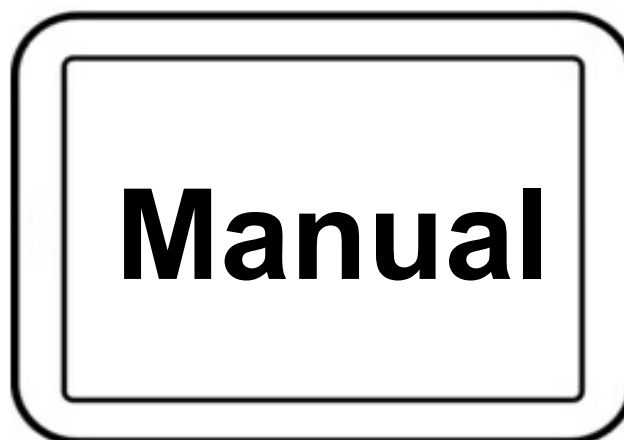

GUARANTEE

Keep the card
for Guaranty

After receiving the product, please register your
2 years warranty and obtain the warranty certificate
in 14 days

E-mail to: **suaat@outlook.ie**

E-mail content: **SUAAT Warranty**



**When using the tablet for the first time, skip the WiFi connection,
After completing the initialization, connect the WiFi in the system**

Please read this instruction thoroughly before using this product
and keep it for future reference.



FCC Warning

This device complies with part 15 of the FCC Rules. Operation is subject to the following two conditions: (1) This device may not cause harmful interference, and (2) this device must accept any interference received, including interference that may cause undesired operation.

Any Changes or modifications not expressly approved by the party responsible for compliance could void the user's authority to operate the equipment.

Note: This equipment has been tested and found to comply with the limits for a Class B digital device, pursuant to part 15 of the FCC Rules. These limits are designed to provide reasonable protection against harmful interference in a residential installation. This equipment generates uses and can radiate radio frequency energy and, if not installed and used in accordance with the instructions, may cause harmful interference to radio communications. However, there is no guarantee that interference will not occur in a particular installation. If this equipment does cause harmful interference to radio or television reception, which can be determined by turning the equipment off and on, the user is encouraged to try to correct the interference by one or more of the following measures:

- Reorient or relocate the receiving antenna.
- Increase the separation between the equipment and receiver.
- Connect the equipment into an outlet on a circuit different from that to which the receiver is connected.
- Consult the dealer or an experienced radio/TV technician for help.

Specific Absorption Rate (SAR) information:

This Tablet meets the government's requirements for exposure to radio waves. The guidelines are based on standards that were developed by independent scientific organizations through periodic and thorough evaluation of scientific studies. The standards include a substantial safety margin designed to assure the safety of all persons regardless of age or health.

FCC RF Exposure Information and Statement

The SAR limit of USA (FCC) is 1.6 W/kg averaged over one gram of tissue. Device types: S10 (FCC ID: 2BOHA-S10) has also been tested against this SAR limit. The highest SAR value reported under this standard during product certification for use the body is 0.652W/kg. This device was tested for typical body-worn operations with the back of the Tablet kept 0mm from the body. To maintain compliance with FCC RF exposure requirements, use accessories that maintain a 0mm separation distance between the user's body and the back of the Tablet. The use of belt clips, holsters and similar accessories should not contain metallic components in its assembly. The use of accessories that do not satisfy these requirements may not comply with FCC RF exposure requirements, and should be avoided.

Body-worn Operation

This device was tested for typical body-worn operations. To comply with RF exposure requirements, a minimum separation distance of 0mm must be maintained between the user's body and the Tablet, including the antenna. Third-party belt-clips, holsters, and similar accessories used by this device should not contain any metallic components. Body-worn accessories that do not meet these requirements may not comply with RF exposure requirements and should be avoided. Use only the supplied or an approved antenna.