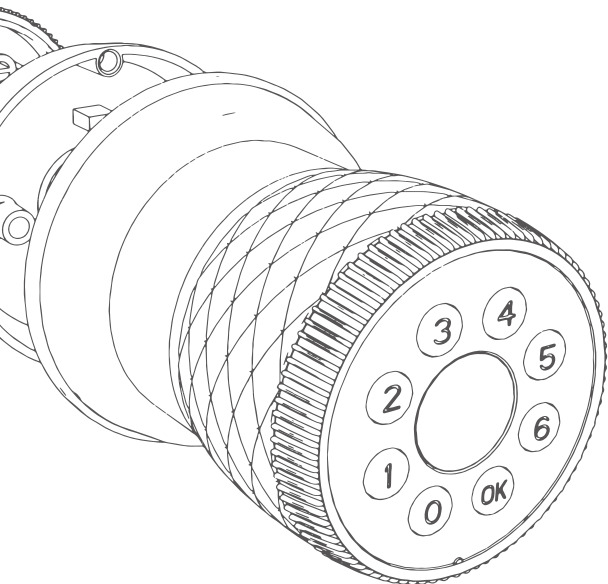
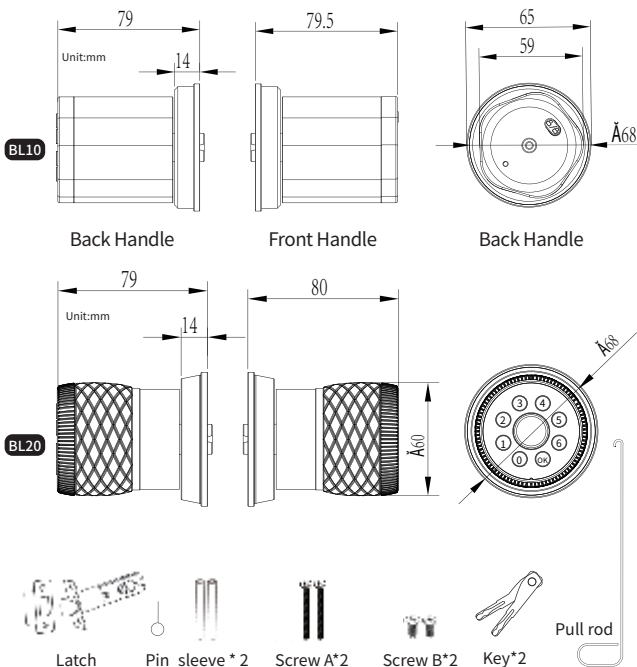


Series of Intelligent Spherical Locks General User Manual



Thank you for purchasing this product.
Please read the instructions carefully before use, thank you!

Product Description

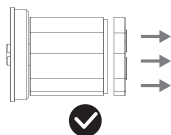


| | | | |
|--------------------------------|-------------------------------------|-------------------------------|---------------------------------------|
| Product Name | Spherical fingerprint password lock | Power supply | Four AA batteries |
| Fingerprint recognition | Semiconductor fingerprint collector | Unlocking time | ~1.5 seconds |
| Emergency key | 2 | Operating temperature range | 5 y 55 degrees Celsius |
| Lock cylinder level | C-class lock cylinder | Unlocking method | Password, key, fingerprint, Bluetooth |
| Power interface specifications | Type-C/ 5V 2A | Fingerprint password capacity | Total 40 |

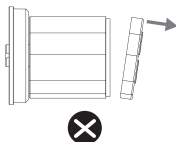
How to open the front cover



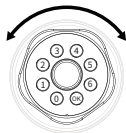
The following operations are applicable to both ball locks



1. Apply force parallel to the right

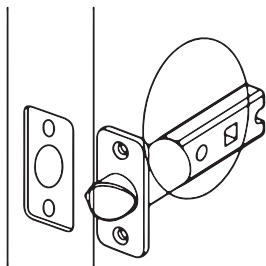


Wrong way: Use force on one side

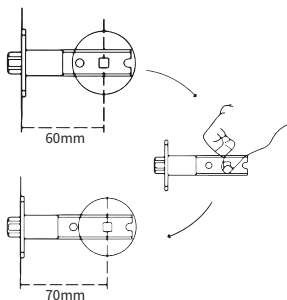


2. Both sides can be opened

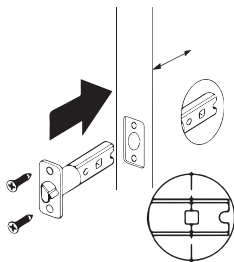
Lock cylinder installation



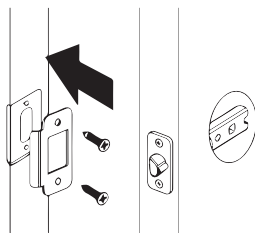
1. Keep the lock cylinder in front of the door opening, close to the edge of the door;



2. Adjustable lock core square hole, adjust the lock core square hole to the center of the door opening;

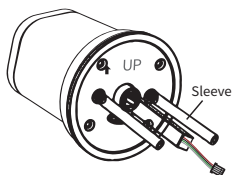


3. Place the lock core into the door hole. The square hole of the lock core must be kept level. Then use screws to fix the lock core to the door panel.

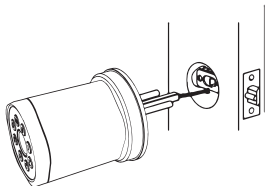


4. Install the door stopper and latch groove on the door frame as shown above and secure with screws.

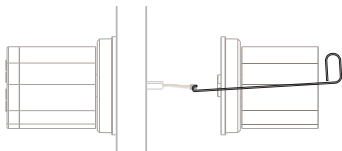
Lock body installation



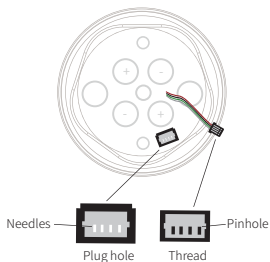
1. Insert sleeve into the corresponding holes of the front lock body;



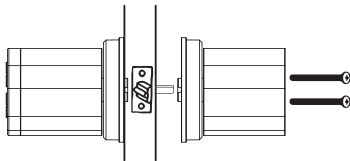
2. Insert the square steel, sleeve and thread into the corresponding holes of the lock core and press them against the door panel;



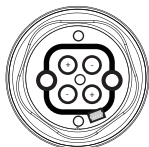
3. Use the pull rod to hold the wire end to facilitate the wire window to pass through the outlet;



4. Align the wire end with the wire hole, then insert the needle in the corresponding needle - hole direction.



5. Use screws to fix the lock body



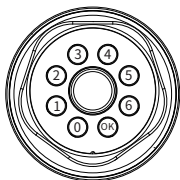
6. Insert 4 AA batteries. Do not insert the positive and negative poles of the batteries in reverse.

Note: Do not use rechargeable batteries.

Lock end detailed operation

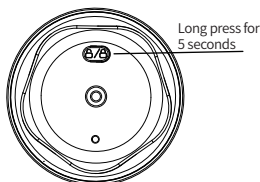
1. Experience Mode

1. In the initialization state, press any fingerprint or enter the initial password 123456 and press the # key to confirm to unlock the door;
2. To set the password and fingerprint, go to the Tuya app.



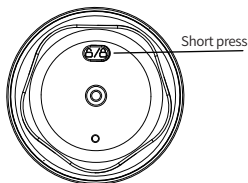
2. Normally open/normally closed mode

1. Hold the rear handle's normally open/closed button for 5 seconds. The buzzer will beep 5 times, and the motor rotates to unlock and keep it unlocked.
2. Once in normally open mode, press the front handle to unlock without fingerprint/password verification.
3. Press the rear handle's normally open/closed button again to exit normally open mode. The motor rotates to lock the door.
4. Normally closed is the default mode. Unlock with fingerprint, password, or Bluetooth.



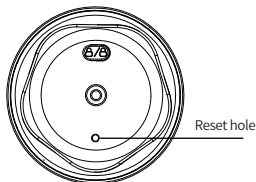
3. Anti-lock mode

1. Short - press the normally open/closed button to enter anti - lock mode. In this mode, only management fingerprint and password can unlock the door; ordinary users' fingerprints or passwords won't work.
2. Both ordinary members and administrators can use their phones' Bluetooth to unlock the door.



4. Initialization

Insert the card pin into the reset hole and hold for 5 seconds. The buzzer beeps 5 times, the fingerprint head lights red for alarm. Press any finger to confirm; it then lights green to complete lock initialization.



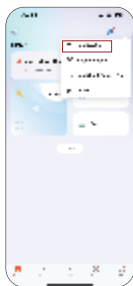
APP Download

1. Download the "Tuya" APP from the app store or scan the right - hand QR code.
2. Ensure the device is powered on. No need to register an administrator first.
3. Open the APP. The phone will auto - search for the door lock's Bluetooth. Select and connect to start operating.



APP network connection device

1. Make sure the smart lock is in the first opening state;
2. Turn on the mobile data and Bluetooth;
3. Open the Tuya app.



Click
"Add Device"



Click on Smart
Door Lock Device



Connection
successful

Click
"Done"



Tuya Smart APP Function Introduction

1.Main interface



Home

2.1 You can slide the unlock block on the home interface to unlock.

2.2 You can query the operation records of the device in the device log, including door opening records, alarm records, operation logs, etc.



My Devices



Log

3. By sliding up the main screen, you can set a temporary password and member management;

4. User management function



More Features



Custom password

5. User management function



Administrator



Add Members

Video Tutorial

Use your phone to scan the QR code below to watch the product installation video.



Product Installation Vide

FCC Statement

This device complies with part 15 of the FCC rules. Operation is subject to the following two conditions: (1) this device may not cause harmful interference, and (2) this device must accept any interference received, including interference that may cause undesired operation.

Changes or modifications not expressly approved by the party responsible for compliance could void the user's authority to operate the equipment.

NOTE: This equipment has been tested and found to comply with the limits for a Class B digital device, pursuant to part 15 of the FCC Rules. These limits are designed to provide reasonable protection against harmful interference in a residential installation. This equipment generates uses and can radiate radio frequency energy and, if not installed and used in accordance with the instructions, may cause harmful interference to radio communications. However, there is no guarantee that interference will not occur in a particular installation. If this equipment does cause harmful interference to radio or television reception, which can be determined by turning the equipment off and on, the user is encouraged to try to correct the interference by one or more of the following measures:

- Reorient or relocate the receiving antenna.
- Increase the separation between the equipment and receiver.
- Connect the equipment into an outlet on a circuit different from that to which the receiver is connected.
- Consult the dealer or an experienced radio/TV technician for help.

The device has been evaluated to meet general RF exposure requirement. The device can be used in portable exposure condition without restriction.