





Scan to get the user manual

—Consumption of parts, unless the failure is due to material or process defects;
 —The warranty starts from the date with which warranty by OACWIE and sales agent (purchase invoice or receipt). The original serial number label of the product has not been removed or torn. The product does not have a unique identifier or the model or number on the warranty certificate is inconsistent with the physical product.
 —Failure due to Force Majeure (accidents, fire, flood, theft, etc.)
 —The warranty does not cover the following types of damage or failure to the extent that they are not caused by the manufacturer's fault:
 — You are not responsible for any additional consequences you make in the order of any third party, even if you are not the person to fulfill them.

Name of user: _____
 Full address: _____
 City: _____
 Product model (Model): _____
 Identification of product: _____
 Date of purchase: _____
 Seller: _____
 Telephone number: _____

Notice to the instruction Manual
 With this card, you are entitled to free warranty services within the warranty period and afterwards until the end of the warranty period.
 — This warranty card is only valid for the product(s) listed within it and is effective only when stamped by the dealer.
 — The warranty terms for special items are according to the specific purchase and sales contract.

The diagram shows two components of the device. On the left is the Micro SD card slot, which includes a slot for the card, a Reset button, a Filllight, a Pilot lamp, and a Lens. On the right is the Tamper device, which is a circular component with a central lens and a tamper switch.

Status	Instructions
Healthy	The individual light fixture is on, and is up to 100% of capacity.
Warning	The single light fixture is on, and is less than 100% of capacity.
Malfunction	The single light fixture is on, accompanied by a single light fixture alarm, and is up to 100% of capacity.
Alarm	The single light fixture is on, accompanied by three light fixture alarms (one from the fixture and two from a group of alarm sensors).
Low Voltage Malfunction	There are no alarm indicators on the fixture, and the power indicator on the wall is up to 100% of capacity.
Low Voltage	The single light fixture is on, and the power indicator on the wall is up to 100% of capacity.

**When a pollution alarm is generated, please contact the product supplier.
The pictures in this manual are schematic diagrams,
which should be based on the actual objects.**

Installation Precautions

Please strictly follow the installation methods outlined in this manual for device installation. Failure to follow these instructions may result in damage to the device or the property.

Before installation, please confirm that the device in the packaging box is intact and that the installation location meets the following requirements:

- 1. The installation location (such as the ceiling) is longer than 20 meters, multiple, and the ceiling is flat.
- 2. The ceiling is not covered by other decorations or plaster before the alarm is being terminated.

Avoid installing the alarm in the following locations:

- 1. High humidity locations, such as bathrooms, showers, and bathrooms.
- 2. Air conditioning, fan, and heating outlets, as well as areas with strong air convection.
- 3. Dusty, dirty, or places frequently visited by insects.
- 4. Places with high temperature and/or high speed, such as above a stove.
- 5. Areas obstructed by furniture or other objects.
- 6. Within 1.5 meters of lighting fixtures.

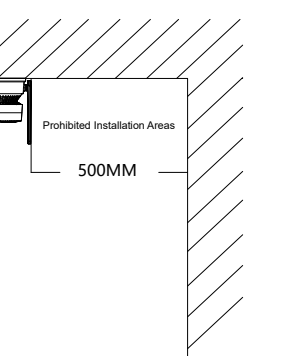
Upper parts of painted-roof houses, corners of rooms, and other enclosed spaces

- 1. Do not connect with vibration cables, or with electromagnetic interference (ignoring this may damage the product).
- 2. Do not connect with other devices.

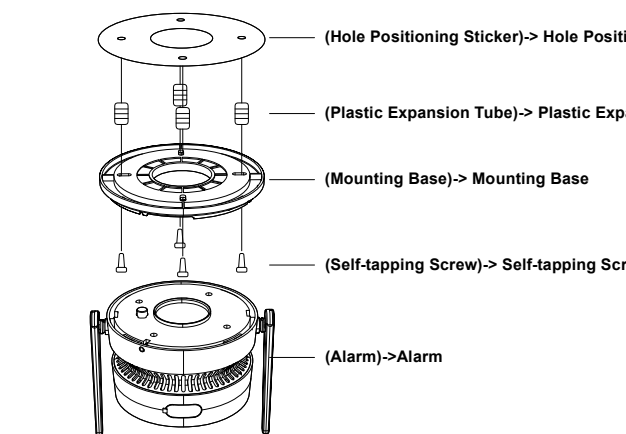
11.5 Environments where the device may be exposed to water or other liquids

Installation Prohibitions

Prohibited Installation Areas



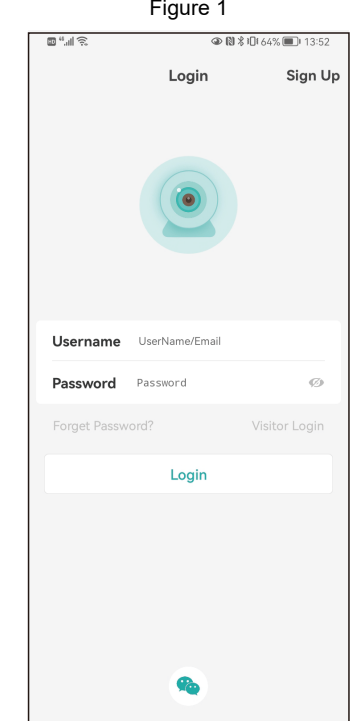
Based on the hole positioning sticker, drill screw holes in the ceiling. Install plastic expansion bolts at the drilled holes and secure the mounting base with self-tapping screws. Organize the wiring, rotate the alarm counterclockwise in the direction indicated in the diagram, and fix it in place.



This device can only be used with the matching cable concealment box (NP-FP101). Using it with other equipment (such as hand carts, shelves, or transport devices) may lead to instability and cause injury.

Note: If the device supports Bluetooth network configuration, please configure it as follows

1. Connect your phone to WiFi network and turn on Bluetooth.
2. Open the iSee app, register an account and login(Figure 1).



4.Wait for the device to be added to be found, and click"OK"(Figure 3).

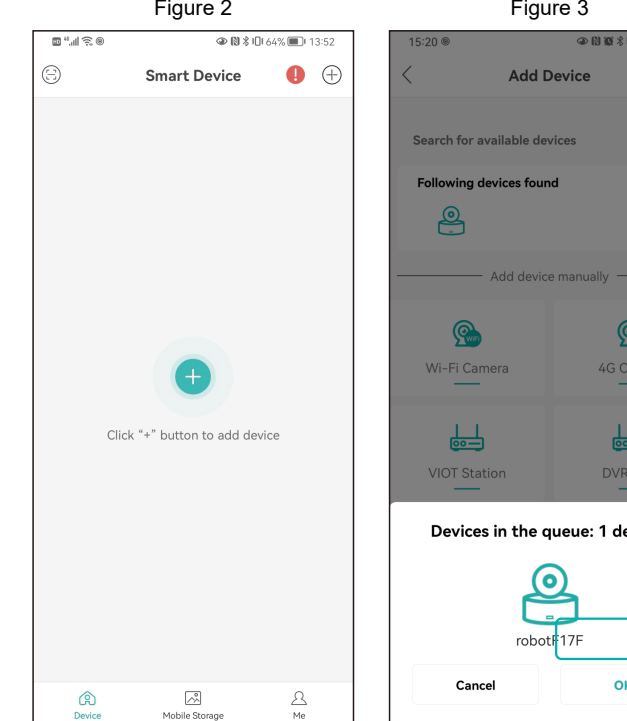
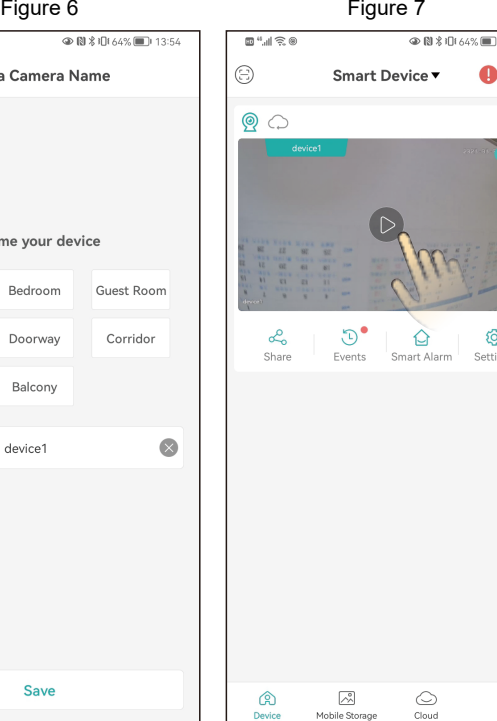


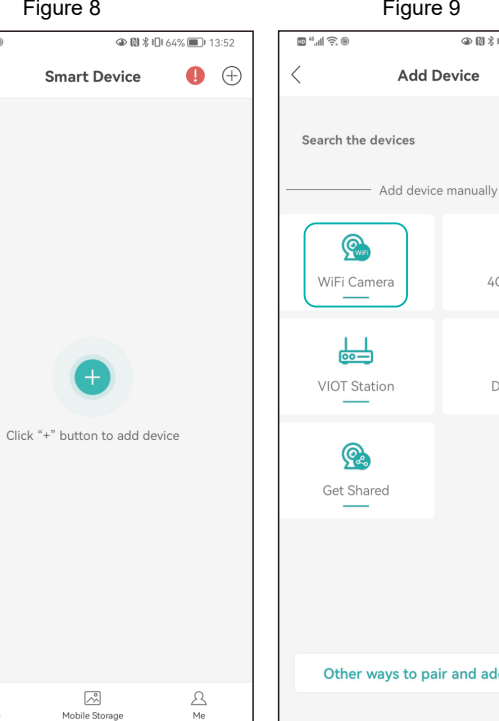
Figure 4

Enter the wireless router password and click "Confirm" (Figure 4).
 Wait for the camera network connecting, when the camera hears the voice message connecting, please wait, **connect router successfully**! the network connection is successful! (Figure 5).

After the network configuration is successful, set the cameraname (Figure 6). The APP interface to guide you through the setup. After the configuration is complete, the device is displayed in the device list interface. Click to open the real-time video, and carry out relevant operations and settings (Figure 7).

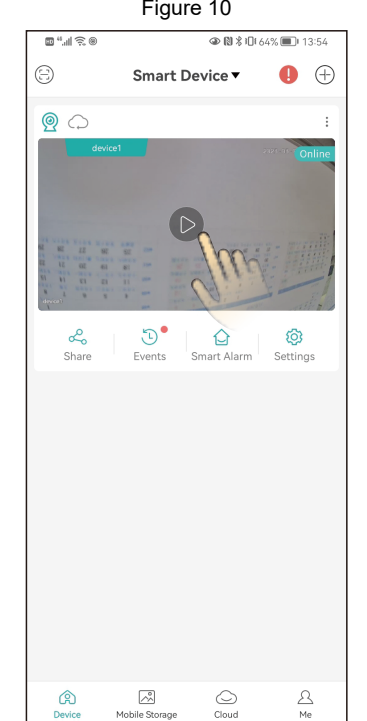


WiFi network configuration
Note: If the device does not support Bluetooth network configuration,
Bluetooth network configuration fails, please configure it as follows:

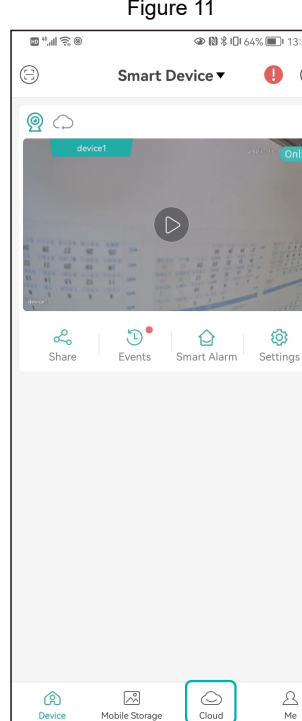


4. After the network configuration is successful, follow the instructions on the APP interface to set the camera password and name.

5. After the configuration is completed, the device is displayed in the device list interface. Click to open the real-time preview screen, and carry out relevant operations and settings (Figure 10).



Steps to open cloud storage: click the "cloud" icon in the deviceist interface and follow the guidance of the appinterface to understand and open the cloud package, with a variety of packages available.



Q:How do cameras store video?

A:10(x)431.2pxrd storage,maximum support up to 128G TFCard Y: 477.07
automatically delete earlier video, overwrite video.
P: 614x431.2pxrd

Notice

1. Please change the user password while using this product to avoid being hacked.
2. Do not install the device in a place that is damp, dusty, inaccessible, or exposed to direct sunlight.
3. Please use and store within the allowable temperature and humidity range, and do not disassemble the equipment at will.

1. Check if the camera power or network of router normally
2. Plug the camera power to restart camera.
3. Restore the camera to factory settings.

Keywords: child abuse; child welfare workers; social support

A: If you use 5g router, 5G and 2.4G use the same connection hotspot (that is, SSID is the same), you can connect directly. If 5G and 2.4G are not the same connection hotspot (that is, SSID is different), SSID of 2.4G is xxxxx-2.4G, SSID of 5G is xxxxx-5G, please connect WIFI of mobile phone to hotspot of xxxxx-2.4G of router before configuring camera.

1. Please refer to the actual product, the manual is for reference only.
2. The APP and product firmware will be updated from time to time.
You can upgrade to the latest firmware online by yourself without notice.
The manual is for reference only. 3. The manual may contain technically inaccurate parts or parts that are inconsistent with product functions or printed errors. Please refer to our process for final interpretation.

FCC Caution.

This device complies with part 15 of the FCC Rules. Operation is subject to the following two conditions:

- (1) This device may not cause harmful interference, and
- (2) this device must accept any interference received, including interference that may cause undesired operation.

Any Changes or modifications not expressly approved by the party responsible for compliance could void the user's authority to operate the equipment.

Note: This equipment has been tested and found to comply with the limits for a Class B digital device, pursuant to part 15 of the FCC Rules. These limits are designed to provide reasonable protection against harmful interference in a residential installation. This equipment generates uses and can radiate radio frequency energy and, if not installed and used in accordance with the instructions, may cause harmful interference to radio communications. However, there is no guarantee that interference will not occur in a particular installation. If this equipment does cause harmful interference to radio or television reception, which can be determined by turning the equipment off and on, the user is encouraged to try to correct the interference by one or more of the following measures:

- Reorient or relocate the receiving antenna.
- Increase the separation between the equipment and receiver.
- Connect the equipment into an outlet on a circuit different from that to which the receiver is connected.
- Consult the dealer or an experienced radio/TV technician for help.

This equipment complies with FCC radiation exposure limits set forth for an uncontrolled environment. This equipment should be installed and operated with minimum distance 20cm between the radiator & your body.