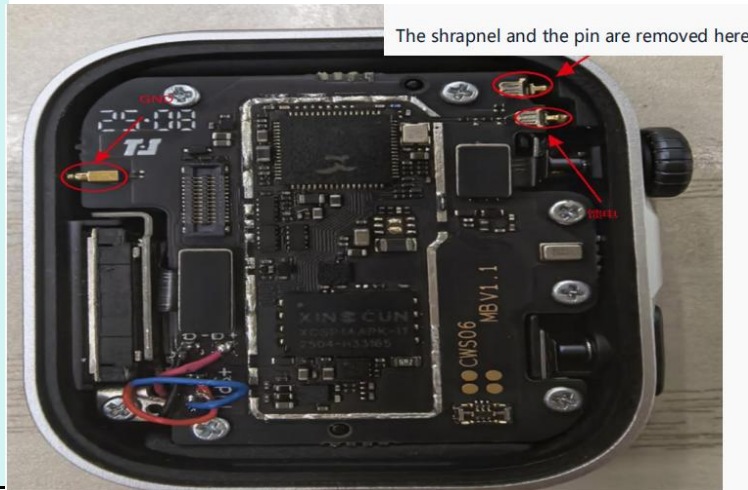


CWS06G antenna specifications

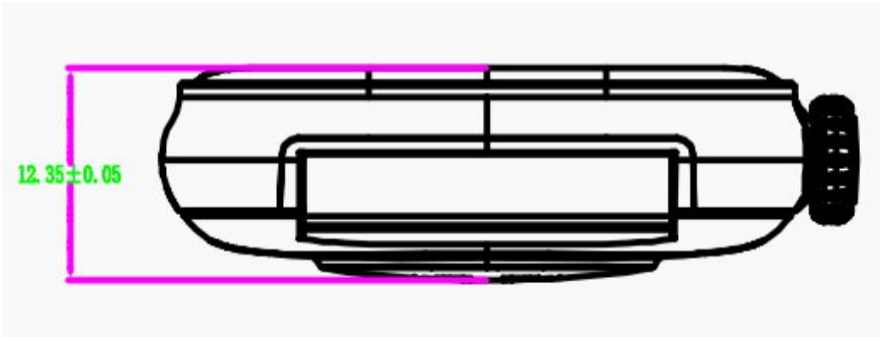
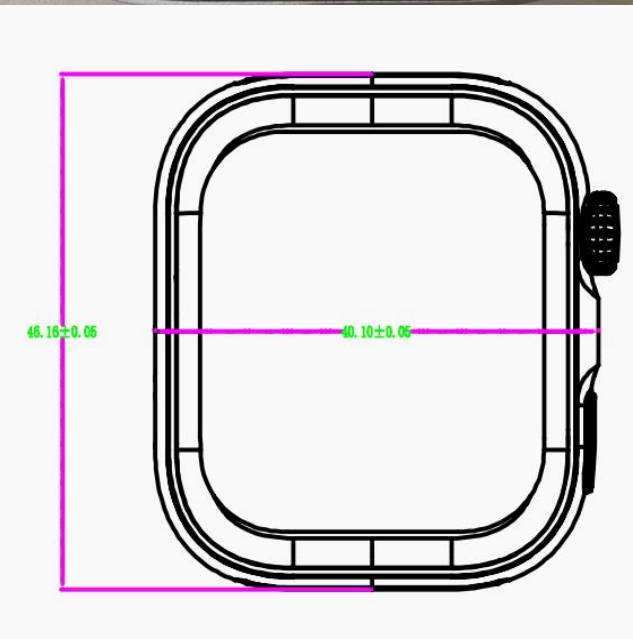
Antenna Description

The antenna of the CWS06 project uses a metal frame and a face ring as the antenna radiator, and the motherboard end is connected to the antenna body by shrapnel to connect the main feed point and ground feed point.

Antenna appearance



Antenna size
Antenna type
Antenna material:
Antenna efficiency parameters



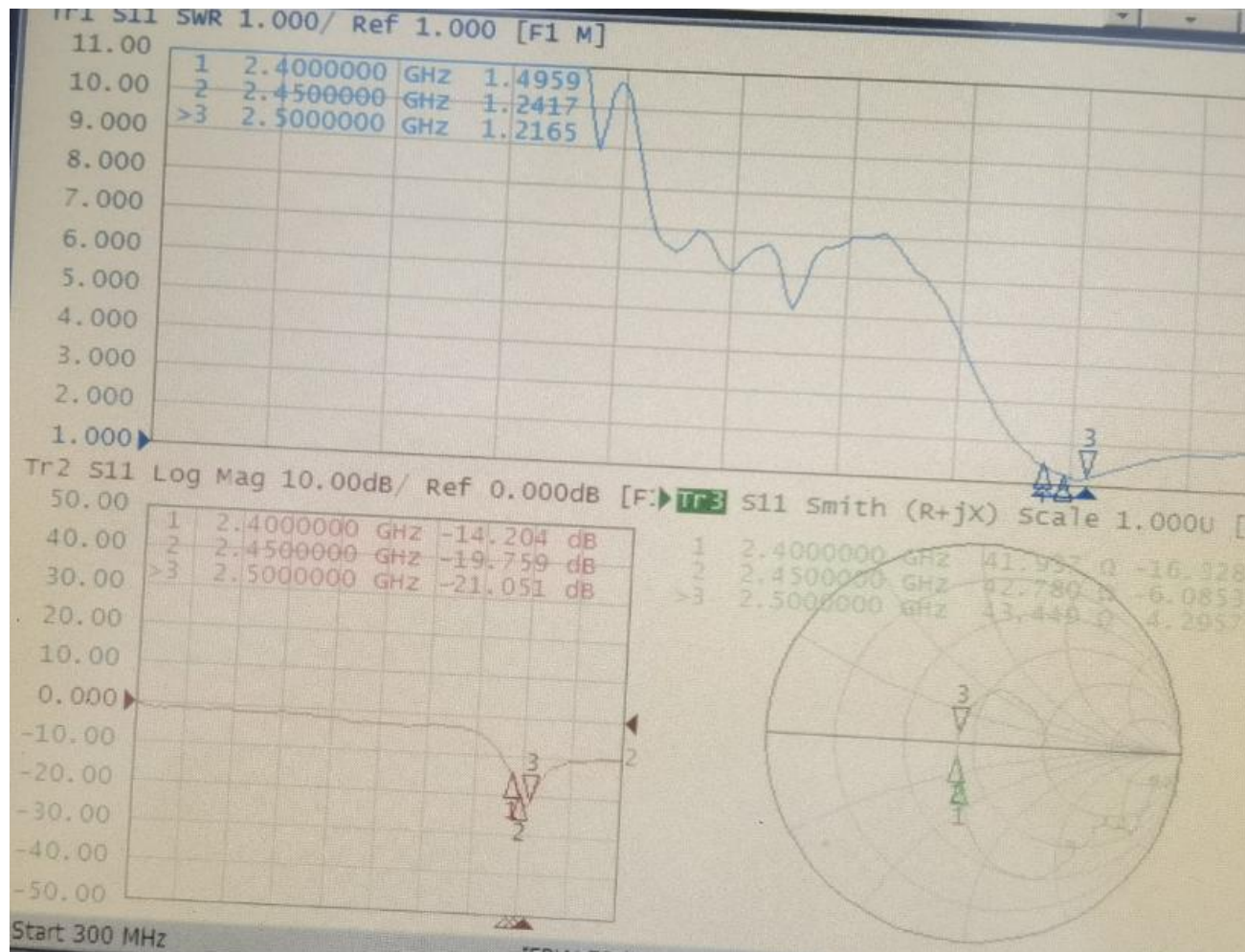
46.16mmx40.10mm

Metal panel antenna

aluminum alloy

Passive debugging results: 1. Arm GPS/BT antenna efficiencydebuggingis about 6.6%

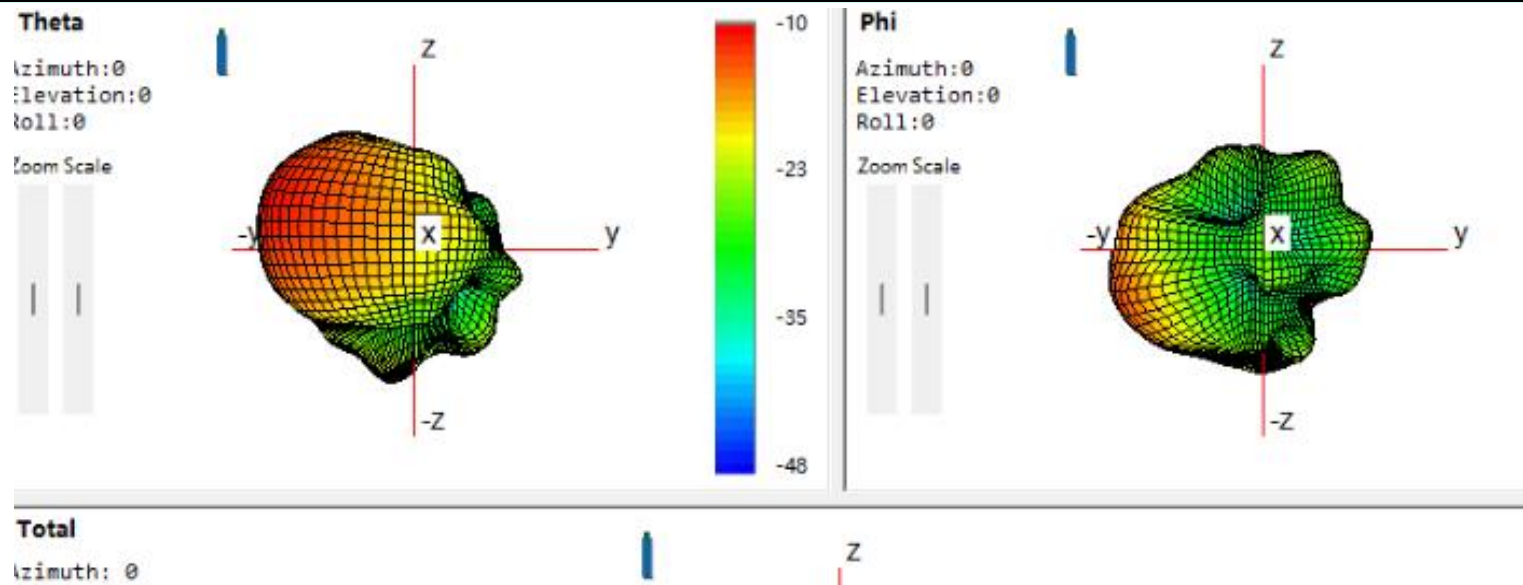
BT passive diagram



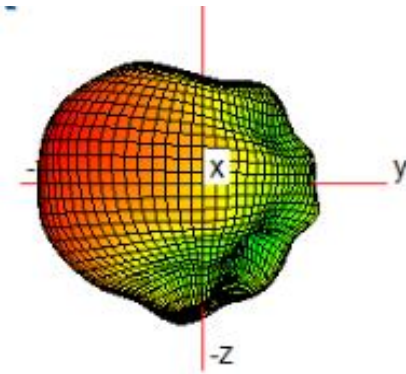
Testing of antenna efficiency parameters

BT Arm	Frequency (MHz)	Efficiency (%)	Gain (dBi)
	2400	4.4	-10.7
	2410	4.8	-10.2
	2420	5.2	-9.6
	2430	5.9	-9.1
	2440	6.3	-8.7
	2450	6.6	-8.4
	2460	5.8	-9.2
	2470	5.2	-9.7
	2480	4.8	-10.3

passive directional map/field pattern map



Elevation: 0
Roll: 0
Zoom Scale



Antenna manufacturername	Shenzhen Yusheng CommunicationEquipmentCo., Ltd
Antenna manufactureraddres	407-411, 4th Floor, Building 2, South Taiyun ChuangguPark, southeastof the intersection of GuangmingAvenue and DongchangRoad, GuangmingDistrict, Shenzhen