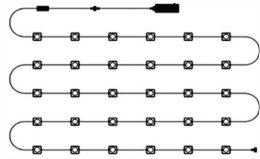


OUTDOOR EAVES LIGHT



Please read this manual carefully before using the product, and keep it for records properly.

Technical Parameters

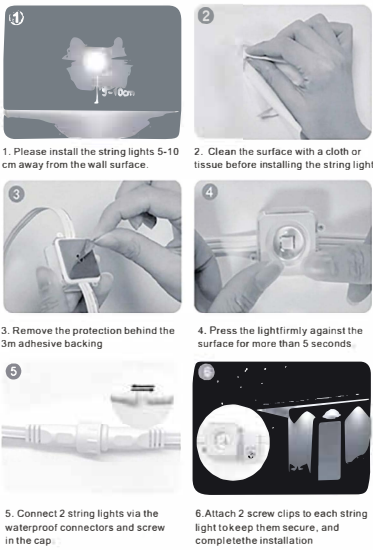
Input Voltage	DC 24V
Optional spacing	500mm
total length	15m
LEDs number	1
Color temperature	RGB
Shell body material	PC
Waterproof grade	IP67
Operating temperature	-20°C~60°C



Language: Chinese, English, Japanese
Operation Platform: Android™ 4.0 or iOS 9.0 or higher
Input Voltage: DC24V
IP Rating: IP67
Working Temperature: -20~55°C
APP Control Distance: Visible distance 20Meters
Remote Control Distance: Visible distance 15Meters

- 1 -

Installation steps



Warm tip: Given the uncertainties of housing materials and natural factors, the adhesive backing cannot ensure a firm fixation. Therefore, it is recommended to use screws for further fixation during installation.

- 2 -

Tip:

The APP installation link and detailed usage instructions are shown as follows.

Download Surplife APP

Download "Surplife" APP from App Store and Google Play Store, or scan the QR code
Note: To use the "Surplife" app, you need to open

your phone Bluetooth permission



1: About Settings

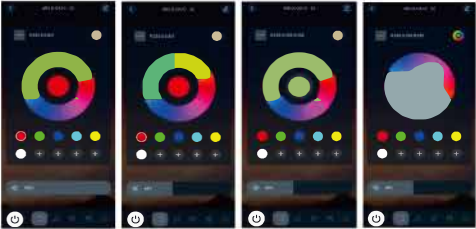
Click the "Settings" icon to enter the Settings interface, where you can change the device icon, name, create groups, menu style, mode style, line order, point Settings (points: 10-1000), and fold mode based on the points of the controller.



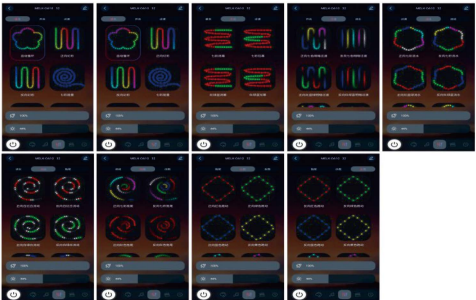
- 3 -

2. Detailed introduction of the APP's functions

1) The rich and diverse features on the home page of the APP
There are multiple static colors to choose from. You can adjust the color temperature and brightness, view the device name and switch the device on/off, and set the APP function.

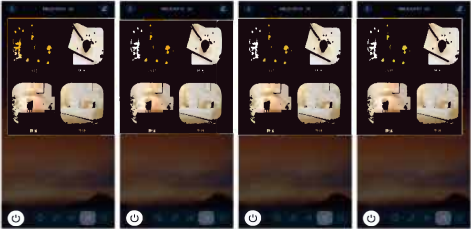


2) Dynamic function
There are multiple dynamic kinetic energies to choose from: basic, opening and closing, transition, flowing water, flow, tailing, forward run, reverse run, and the speed and brightness can be adjusted.



- 4 -

3) Scene function
The built-in lighting effects can be selected from four scene modes: party, leisure, quiet, and lunch break.

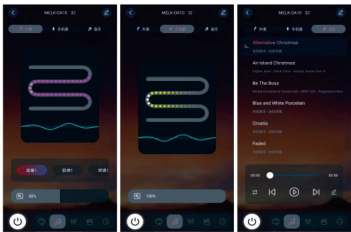


4) Timing function
a) Set the lighting switch to controlled lighting according to the set time.
b) When the lights are turned on, you can choose between color or ambient lighting effects.

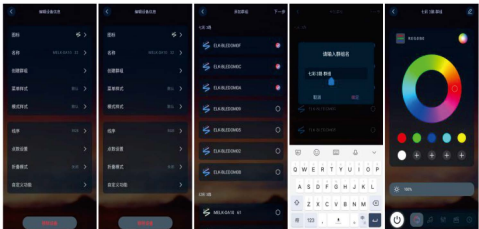


- 5 -

5) Rhythm function
① Music mode: The lights jump and change in rhythm with the music
② Microphone
1) Mobile phone microphone.
2) Device microphone, device microphone function (only for the voice control version), converts the signals received by the microphone into different rhythm lighting effects.



6) Group control function
a). Create groups
b). Select the equipment
c). Set the group name



- 6 -

FCC Warning Statement: Changes or modifications to this unit not expressly approved by the party responsible for compliance could void the user's authority to operate the equipment. This equipment has been tested and found to comply with the limits for a Class B digital device, pursuant to Part 15 of the FCC Rules. These limits are designed to provide reasonable protection against harmful interference in a residential installation. This equipment generates, uses and can radiate radio frequency energy and, if not installed and used in accordance with the instructions, may cause harmful interference to radio communications. However, there is no guarantee that interference will not occur in a particular installation. If this equipment does cause harmful interference to radio or television reception, which can be determined by turning the equipment off and on, the user is encouraged to try to correct the interference by one or more of the following measures:

- Reorient or relocate the receiving antenna.
- Increase the separation between the equipment and receiver.
- Connect the equipment into an outlet on a circuit different from that to which the receiver is connected.
- Consult the dealer or an experienced radio/TV technician for help.

This device complies with Part 15 of the FCC Rules. Operation is subject to the following two conditions: (1) this device may not cause harmful interference, and (2) this device must accept any interference received, including interference that may cause undesired operation.

FCC Radiation Exposure Statement

The antennas used for this transmitter must be installed to provide a separation distance of at least 20 cm from all persons and must not be co - located for operating in conjunction with any other antenna or transmitter.