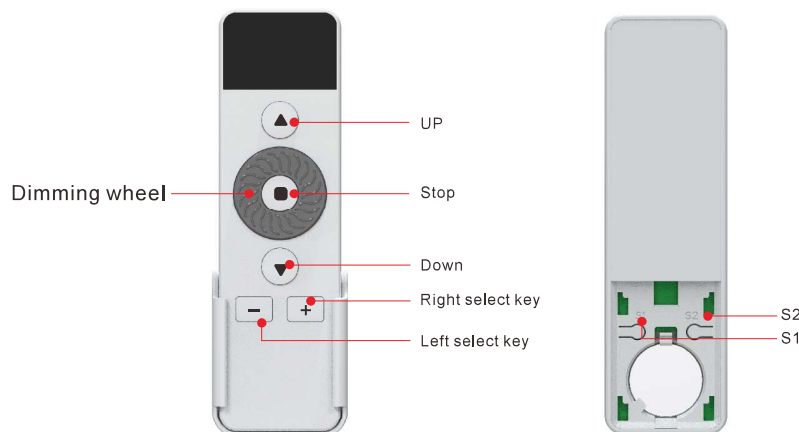


Instructions of Handheld wireless remote

I. Instructions



1. Control

Up key: For upward control.
Stop key: To stop.
Down key: For downward control.

2. Frequency Selection

Right frequency selection key: Increases the channel.
Left frequency selection key: Decreases the channel.

3. SET Key and LEARN Key

S1 is the setting key: Used for setting limits and deleting codes.
S2 is the code-learning key and network-configuration key: Press this key once within 10 seconds after the motor is powered on, and the motor (unpaired) enters the pairing state. Short-press this key 3 times to enter the network-configuration state.

4. Frequency Locking

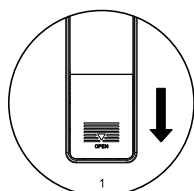
Frequency locking: Press the 'Stop key' + any 'frequency selection key' until the indicator light turns on (about 3 seconds) to lock the current channel. After locking, the current channel becomes the maximum number of channels for this transmitter, and channels after the current one cannot be used. In any channel, press the 'Stop key' + any 'frequency selection key' again until the indicator light turns on (about 3 seconds) to unlock the channel.

5. Roller Control

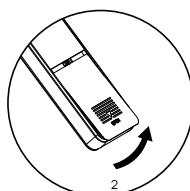
In the motor adjustment state: Slide counter-clockwise to make the motor move upward in a jog mode. The jog angle is related to the travel of the roller slide. Slide clockwise to make the motor move downward in a jog mode, and the jog angle is related to the travel of the roller slide.

II. REMOTE battery cover removal and installation diagram

Disassembly steps

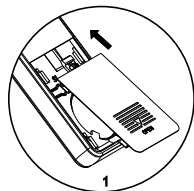


Push down the battery cover

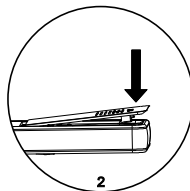


Lift up the battery cover

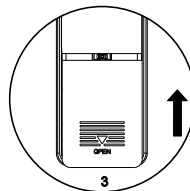
Installation Steps



Place the cover snap in the card slot



Press down the battery cover

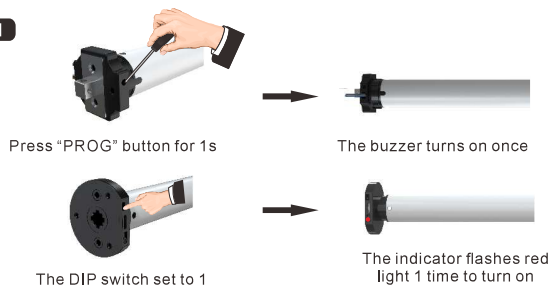


Push up into the battery cover

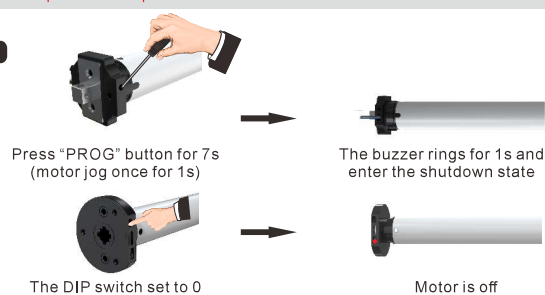
III. instructions

1.ON/OFF *After entering the shutdown state, it is not connect with the remote control single and no response when press the S2.

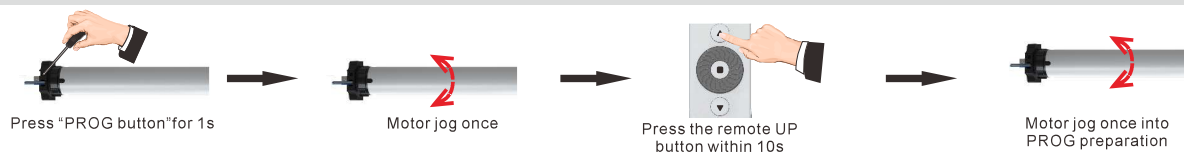
ON



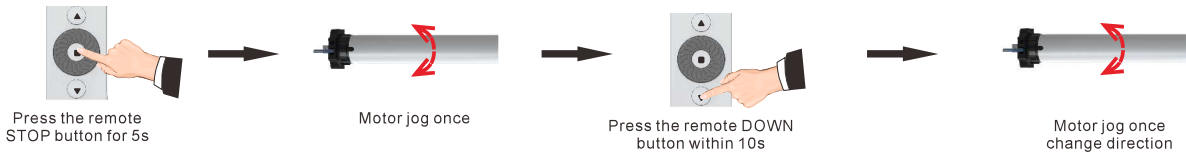
OFF



2. Pairing the remote

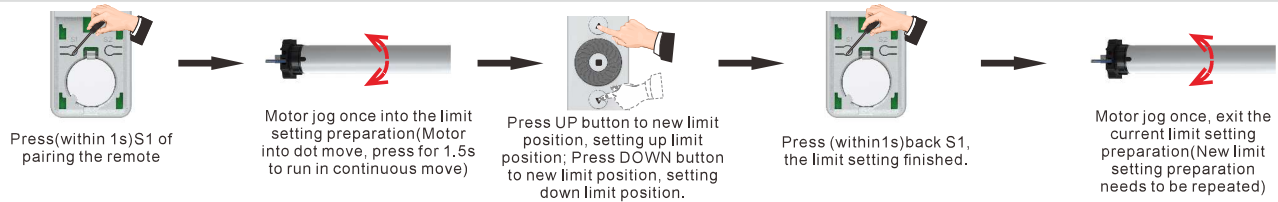


3. Change Direction

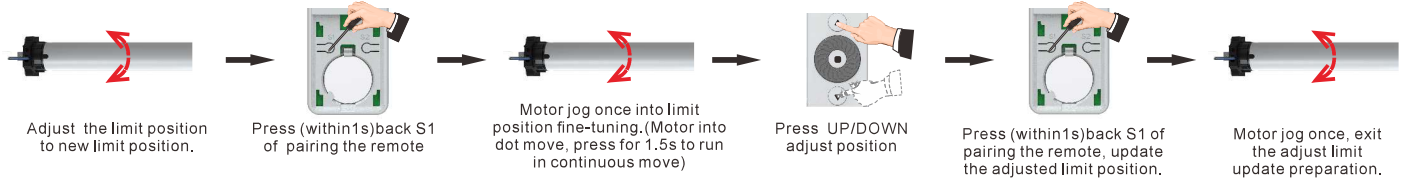


4. limit position setting *If no operation within 30s in the limit setting preparation, that will be exited.

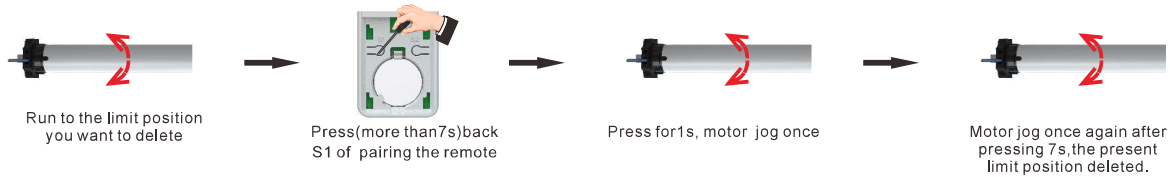
After setting the up and low limit position, motor automatically switch to the continuous move.



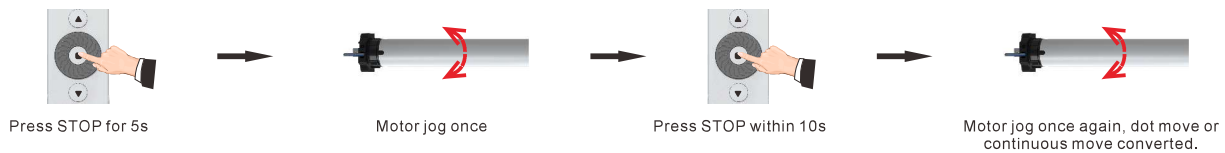
5. Limit position fine-tuning *If no operation within 30s in the limit setting preparation, that will be exited.



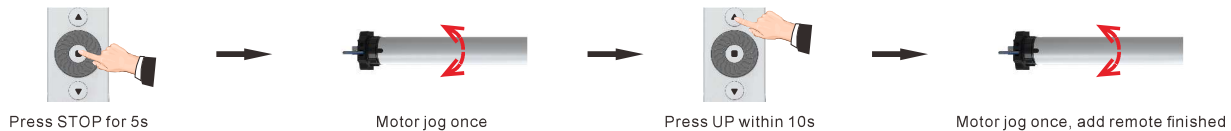
6. Delete the single limit position *Do not delete the first one



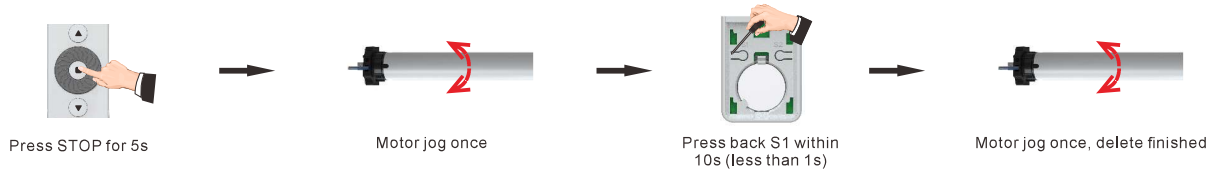
7. Dot move & Continuous move convention



8. Add remote



9. Delete single code



10. Delete all codes

Method 1

Short press the S2 4 times (<1s), long press the S2 1 time (>3s)

Motor jog twice all codes deleted

Press the PROG button 2 times (the press time <1s, the interval <1s)

Press the PROG button 2 times (the press time >3s, the interval time <1s)

After the first long press for 3s, the red indicator will light up reminder, the interval between short press and long press <1s

Motor jog twice all codes deleted

Method 2

Press STOP for 5s

Motor jog once

Press back S1 for 7s within 10s

Motor jog once at 1s

Motor jog twice at 7s all codes deleted.

- a) The statement "Remove and immediately recycle or dispose of used batteries according to local regulations and keep away from children. Do NOT dispose of batteries in household trash or incinerate."
- b) The statement "Even used batteries may cause severe injury or death."
- c) The statement "Call a local poison control center for treatment information."
- d) A statement indicating the compatible battery type (e.g., LR44, CR2032).
- e) A statement indicating the nominal battery voltage.
- f) The statement "Non-rechargeable batteries are not to be recharged."
- g) The statement "Do not force discharge, recharge, disassemble, heat above (manufacturer's specified temperature rating) or incinerate. Doing so may result in injury due to venting, leakage or explosion resulting in chemical burns."

- a) The statement "Ensure the batteries are installed correctly according to polarity (+ and -)."
- b) The statement "Do not mix old and new batteries, different brands or types of batteries, such as alkaline, carbon-zinc, or rechargeable batteries."
- c) The statement "Remove and immediately recycle or dispose of batteries from equipment not used for an extended period of time according to local regulations."
- d) The statement "Always completely secure the battery compartment. If the battery compartment does not close securely, stop using the product, remove the batteries, and keep them away from children."

This device complies with Part 15 of the FCC rules. Operation is subjected to the following two conditions: (1) this device may not cause harmful interference, and (2) this device must accept any interference received, including interference that may cause undesired operation.

Changes or modifications not expressly approved by the party responsible for compliance could void your authority to operate the equipment.

This equipment complies with FCC radiation exposure limits set forth for an uncontrolled environment.

This equipment has been tested and found to comply with the limits for a Class B digital device, pursuant to Part 15 of the FCC Rules. These limits are designed to provide reasonable protection against harmful interference in a residential installation. This equipment generates, uses and can radiate radio frequency energy and, if not installed and used in accordance with the instructions, may cause harmful interference to radio communications. However, there is no guarantee that interference will not occur in a particular installation. If this equipment does cause harmful interference to radio or television reception, which can be determined by turning the equipment off and on, the user is encouraged to try to correct the interference by one or more of the following measures:

- Reorient or relocate the receiving antenna.
- Increase the separation between the equipment and receiver.
- Connect the equipment into an outlet on a circuit different from that to which the receiver is connected.
- Consult the dealer or an experienced radio/TV technician for help.

This device contains licence-exempt transmitter(s)/receiver(s) that comply with Innovation, Science and Economic Development (ISED) Canada's licence-exempt RSS(s). Operation is subject to the following two conditions: (1) this device may not cause interference, and (2) this device must accept any interference, including interference that may cause undesired operation of the device.

The device has been evaluated to meet general RF exposure requirement.

Cet appareil contient des émetteurs/récepteurs exemptés de licence qui sont conformes aux flux RSS exempts de licence du Canada pour l'innovation, la Science et le développement économique (ISDE). Le fonctionnement est soumis aux deux conditions suivantes: (1) ce dispositif ne peut pas causer d'interférence, et (2) ce dispositif doit accepter toute interférence, y compris les interférences pouvant causer un fonctionnement indésirable du dispositif.

L'appareil a été évalué pour répondre aux exigences générales d'exposition aux RF.