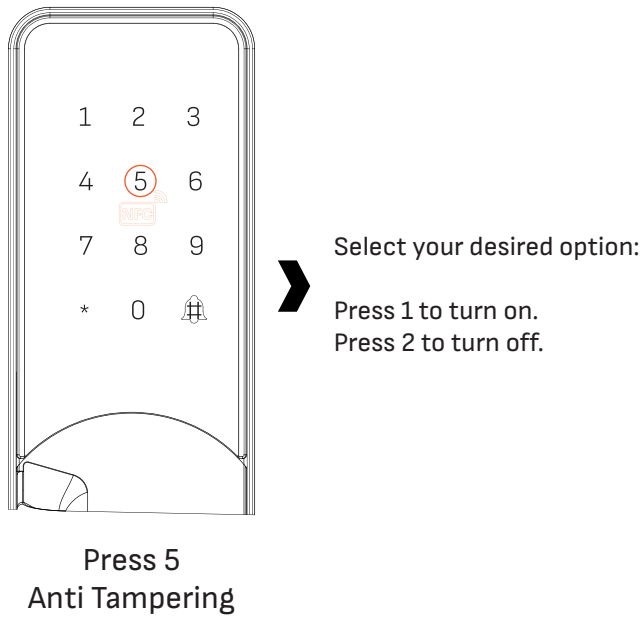
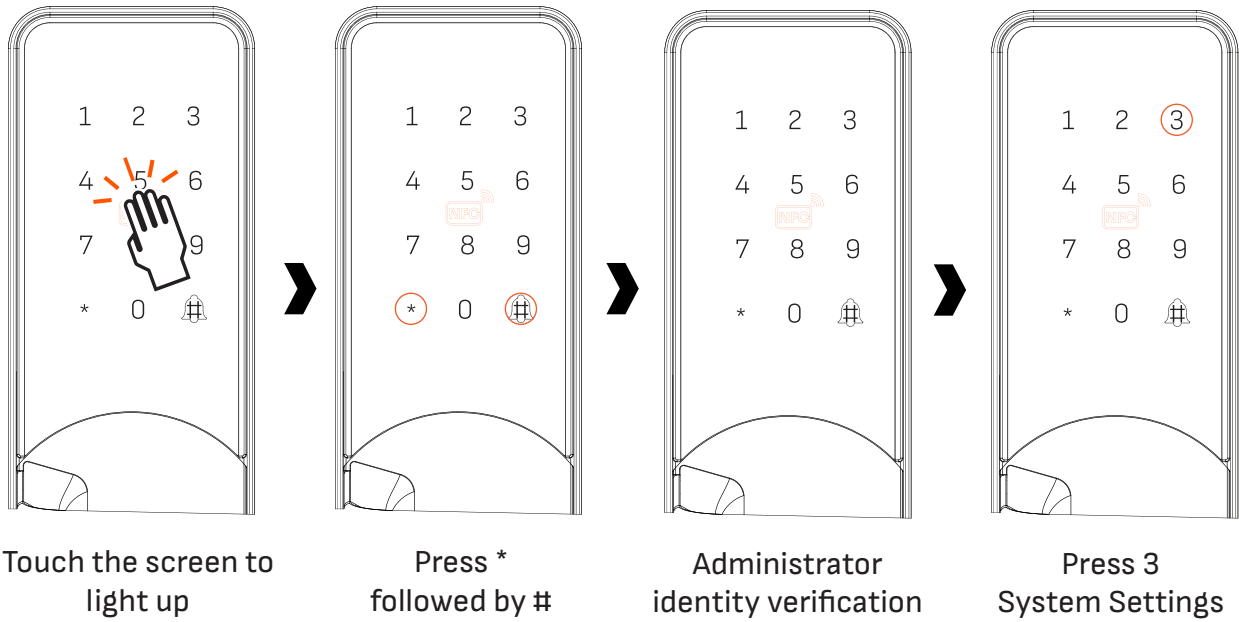
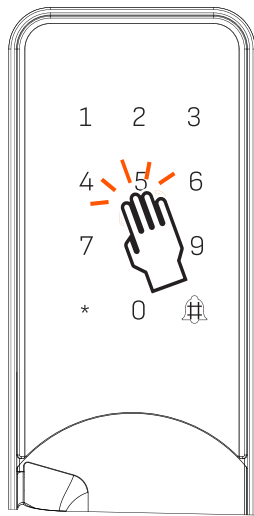


## 15.5 Anti Tampering (ON/OFF)



## 15.6 Record Info



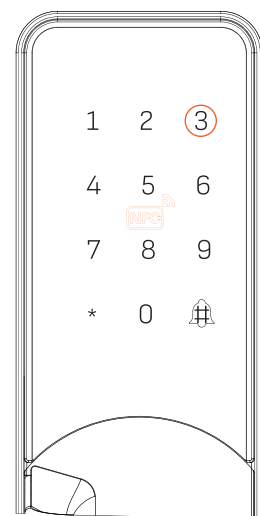
Touch the screen to  
light up



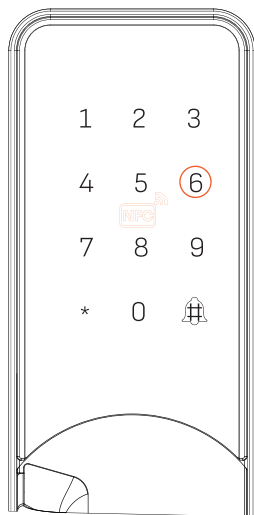
Press \*  
followed by #



Administrator  
identity verification



Press 3  
System Settings



Press 6  
Record Info

System Voice Announcement for the Latest Unlock

The system will announce the most recent unlocking event as follows:

Sequence: 0

Unlock Type: Admin - Fingerprint

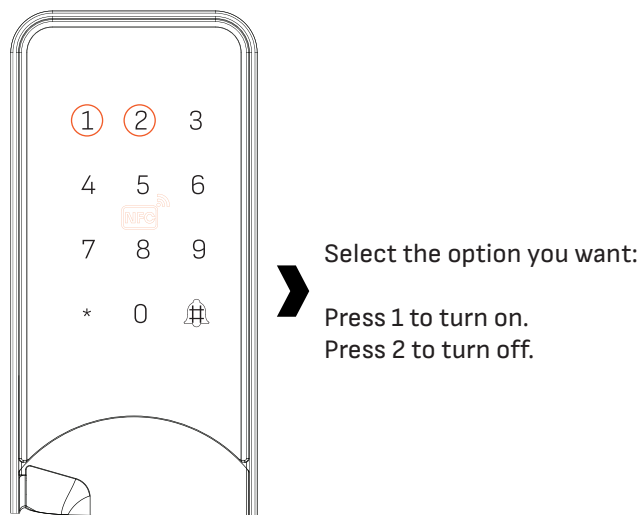
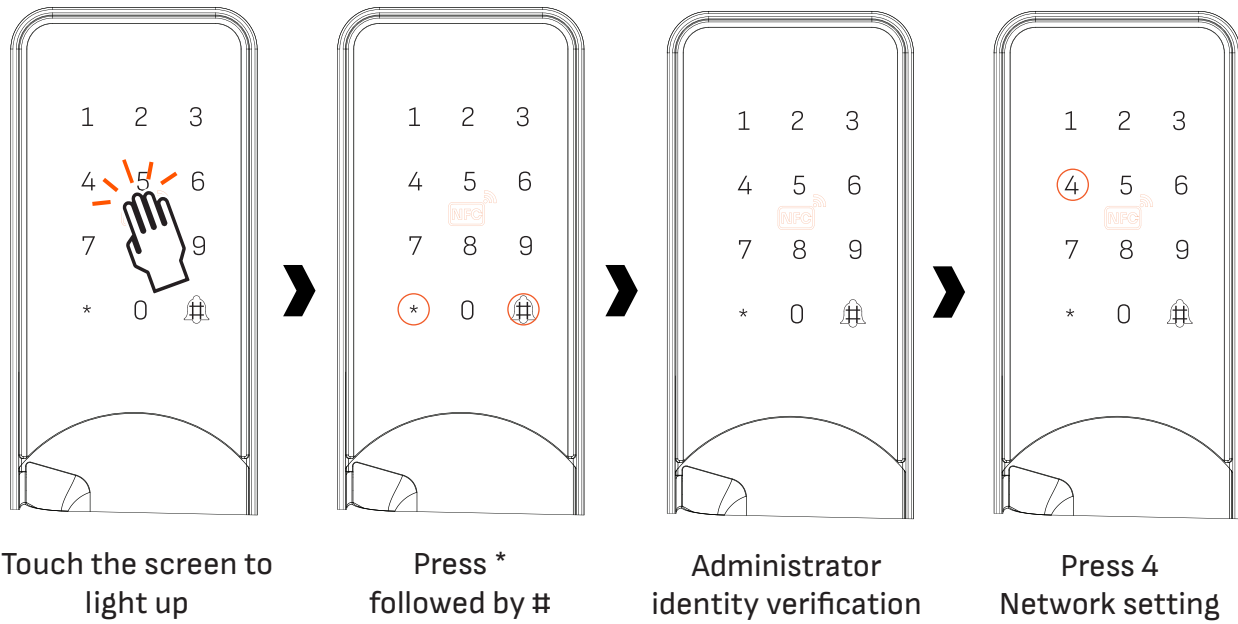
Door Unlock Time: Year 2024, Month 11, Day 06, Hour 12, Minute 41

# Remote Management

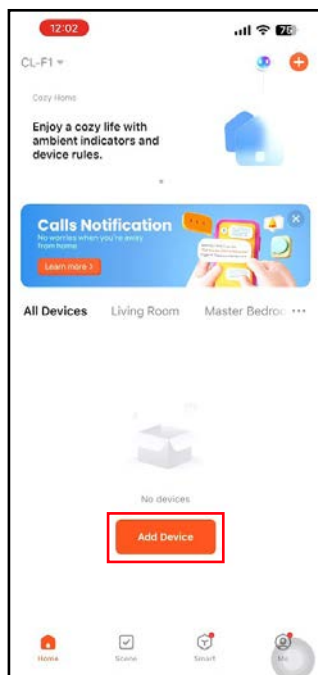
**CL-S1**



## 16. Network Setting



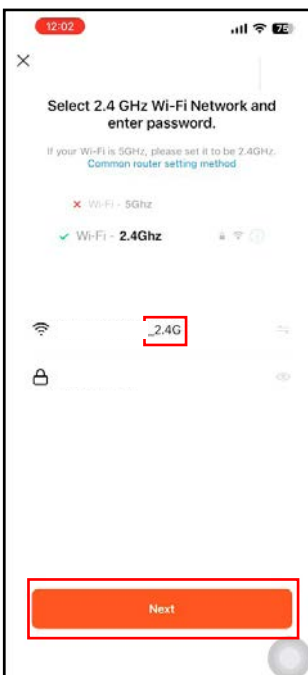
\*When the battery is low, the application cannot be connected.



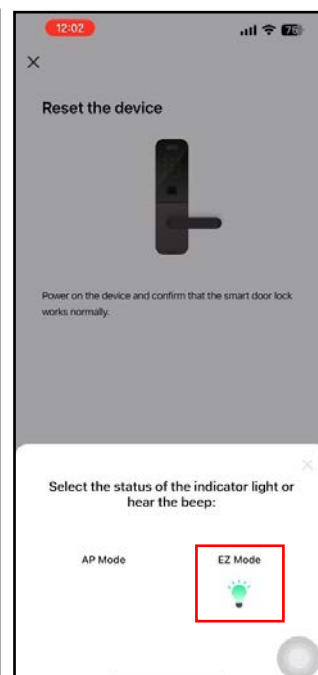
Open the TUYA app  
and press  
Add Device



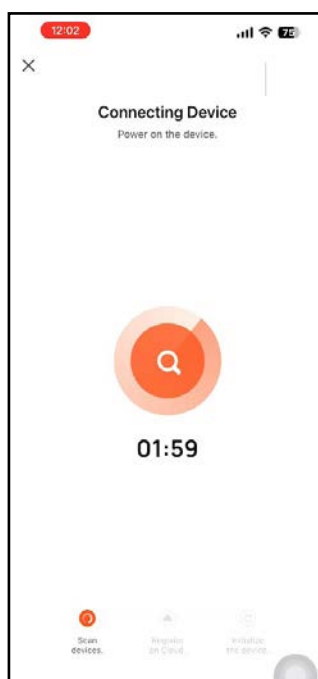
Press Camera &  
Lock and then press  
Lock (Wi-Fi)



Check the Wi-Fi and  
then press Next



Press EZ Mode



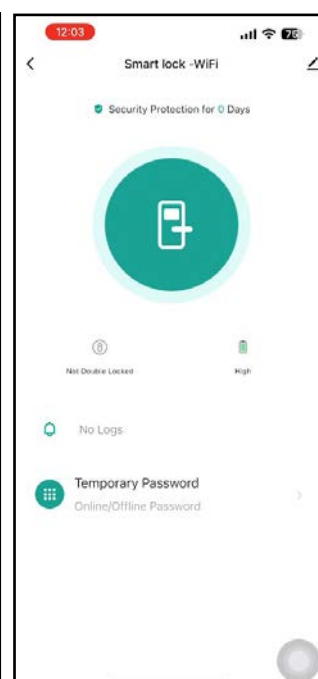
The system is  
establishing the  
connection.



Press Done



Press Confirm the  
indicator is blinking  
rapidly



Connection  
successful

## 17.Languages Code

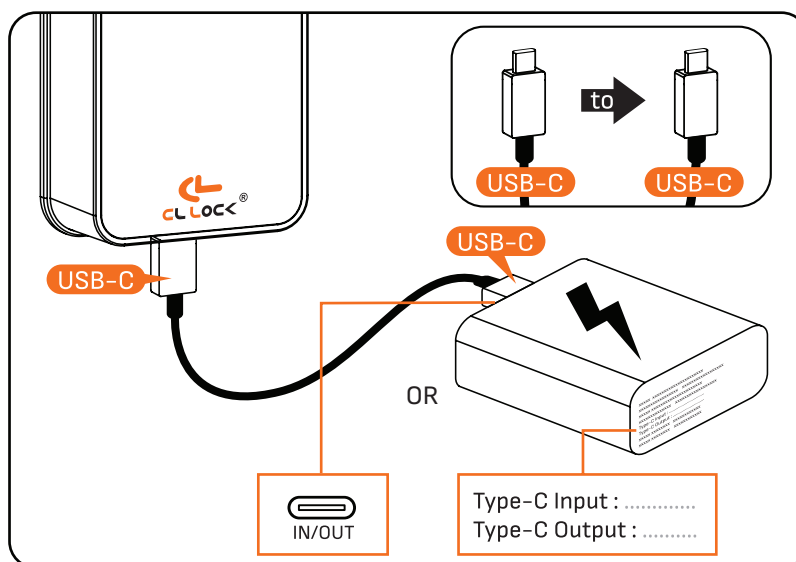
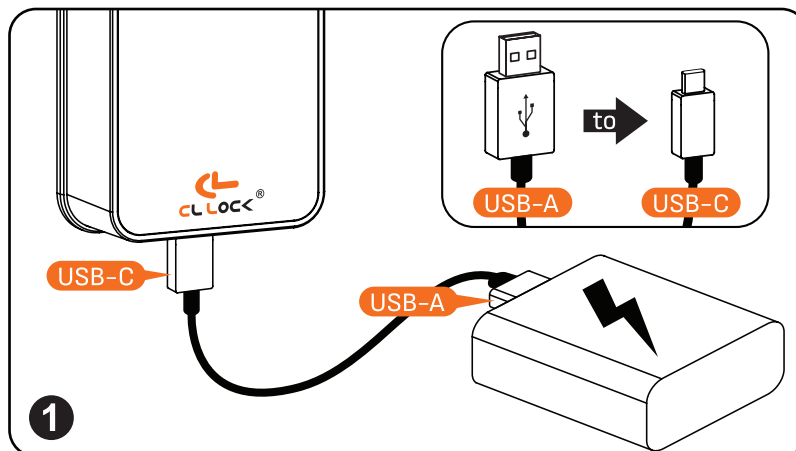
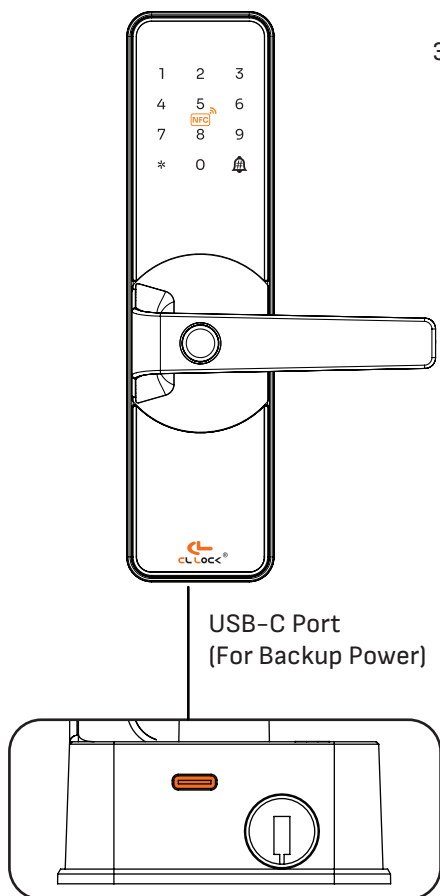
English	555666880#
Vietnamese	555666881#
Portuguese	555666882#
Arabic	555666883#
Russian	555666884#
Thai	555666885#
Spanish	555666886#
Indonesian	555666887#
Chinese	555666888#

## 18.USB-C Port Usage

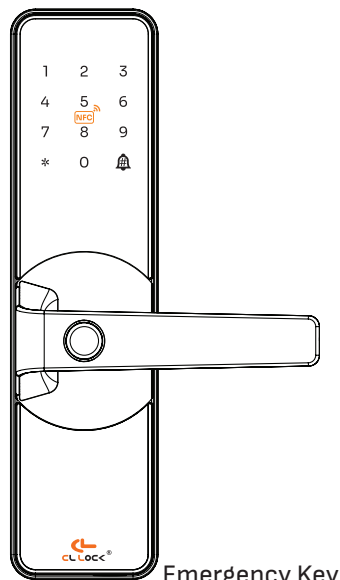
### Using the USB-C port

Using Backup Power from a Power Bank

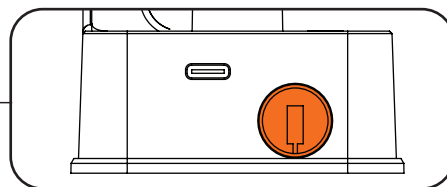
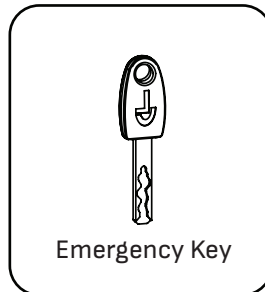
- 1.You can connect using a USB-A to USB-C cable (see Image 1).
- 2.You can use a USB-C to USB-C cable only if the Power Bank's port specifies it supports both Input and Output (IN/OUT) in the same port. The manufacturer may display this information in different locations, such as directly on the port or in the Power Bank's specifications (see Image 2).
- 3.In an emergency, if the battery runs out and the lock is engaged:  
Users cannot replace the battery because the battery compartment is installed internally. You can connect the Power Bank to the USB-C port located at the bottom of the lock to continue using it. Afterward, it is recommended to replace the battery immediately.



## 19.Unlocking with the Emergency Key

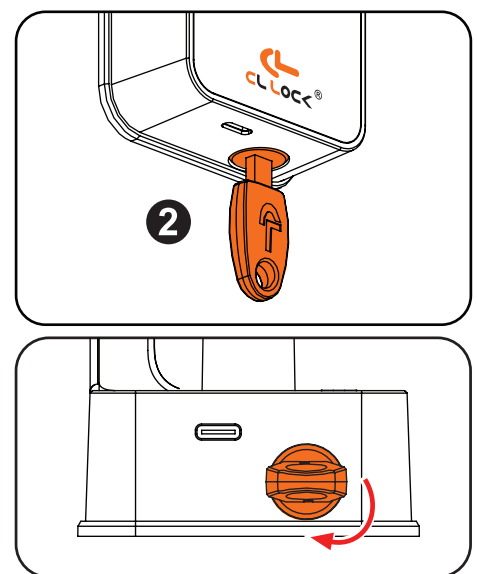
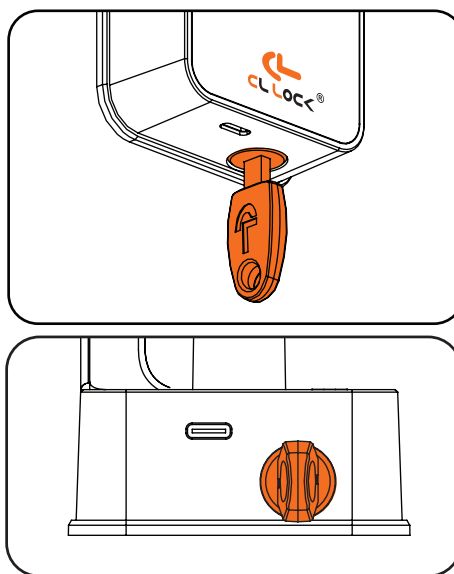
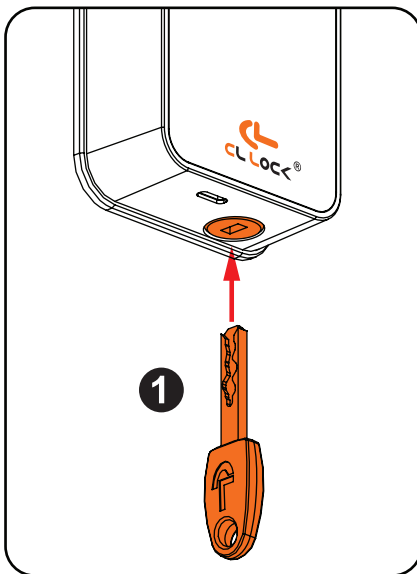


### Using the Emergency Key



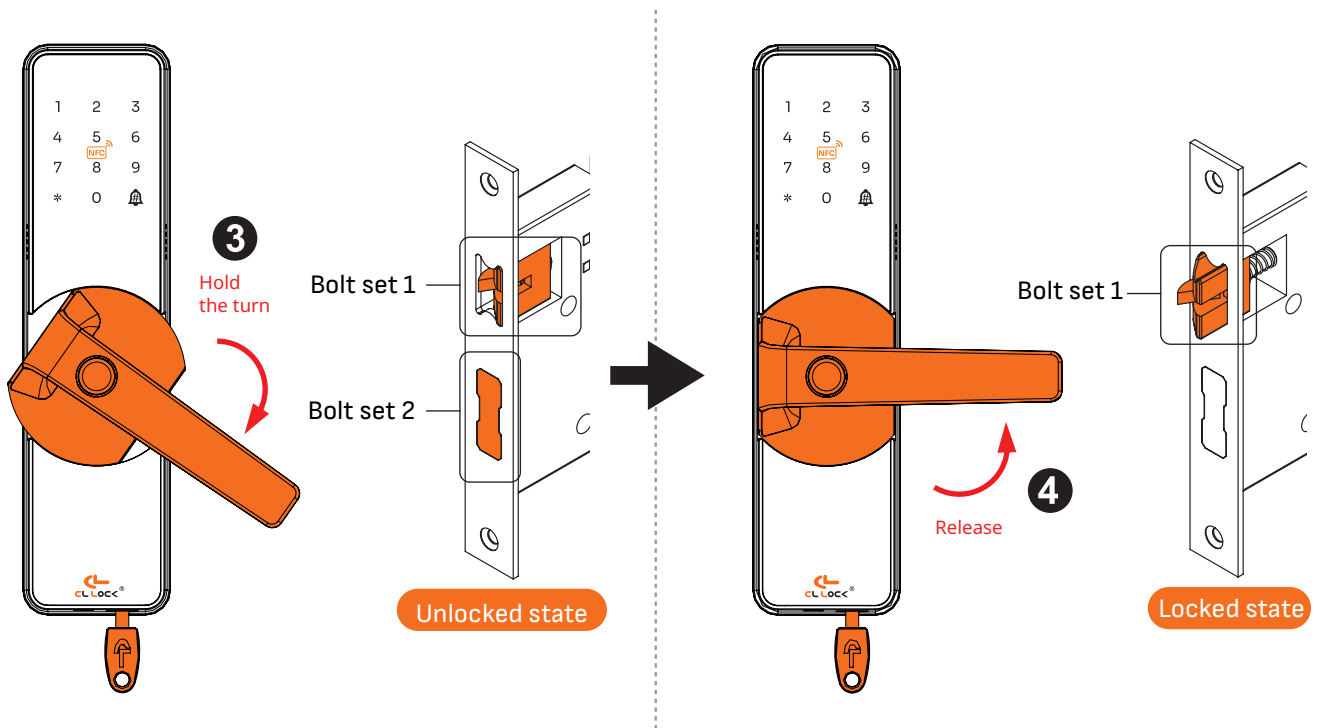
### Unlocking with the Emergency Key

1. Insert the emergency key into the bottom of the lock.
2. Turn the emergency key clockwise until it stops.

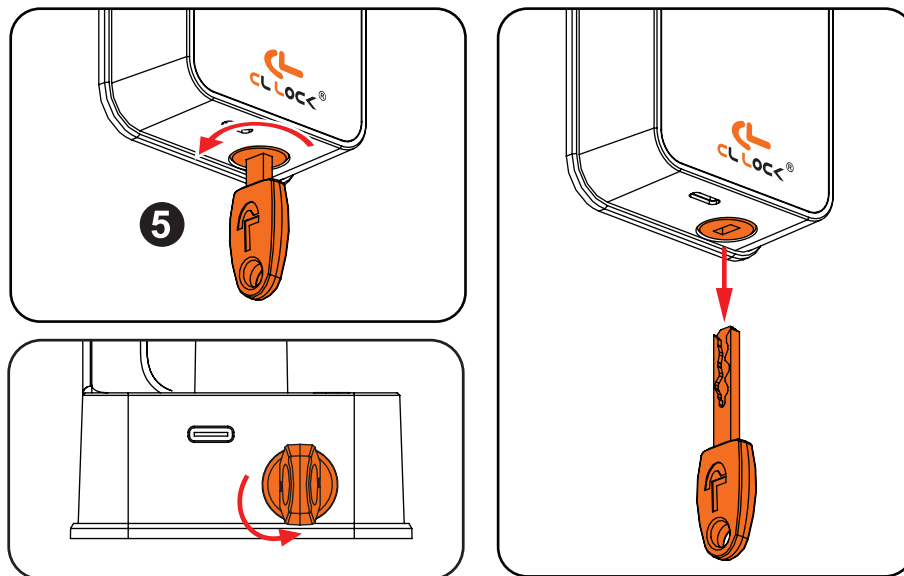




3. Turn the handle downward and hold it. Both latch sets will retract, putting the lock in an unlocked state, allowing the door to be opened.
4. Release the handle to return to its original position (automatically). The first latch set will extend, returning to the locked state.



5. Turn the emergency key counterclockwise until it stops to remove the key.

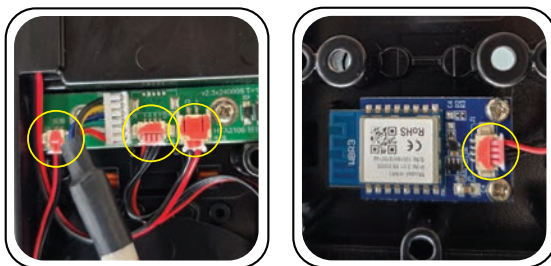


## 20. Product Warranty Policy

1. The warranty sticker attached to the product must be intact, not torn or missing (see the illustration).



2. Removing the red terminal from the circuit board will immediately void the warranty. (See illustration)



3. Any damage to the device, such as breakage, cracking, dents, burns, electrical short circuits, chipping, bending, warping, fractures, falls, punctures, water intrusion, scratches on the circuit board, or missing parts (e.g., screen, body, buttons), will result in the warranty being voided immediately.
4. Damage caused by accidents, fires, natural disasters (e.g., lightning, floods, earthquakes, severe weather), or insects and animals will result in the warranty being voided immediately.
5. Damage caused by improper use, connecting incompatible devices, unauthorized repairs or modifications, or using non-genuine replacement parts will result in the warranty being voided immediately.
6. Products exhibiting abnormal conditions not caused by normal usage or improper storage (e.g., adhesive residue, oxidation stains, watermarks, animal droppings, rust, or broken circuit traces) will result in the warranty being voided immediately.
7. The company reserves the right to reject product returns if the customer is dissatisfied with the product after it has been unboxed or used.
8. The company reserves the right to amend or change warranty conditions without prior notice.

## 21. Safety Manual and Precautions

1. Alkaline batteries: Please do not bring them near a fire source to prevent the risk of explosion.
2. Please do not attempt to disassemble the product to avoid damage.
3. Do not scratch the fingerprint scanner with sharp objects as it may cause permanent damage.
4. Do not leave the product in areas where water may leak or splash.
5. Do not connect the device to household wiring.
6. For cleaning, please wipe with a soft cloth.
7. Do not remove the battery during the setup process.
8. After receiving a low battery warning for the key, please replace the battery immediately.
9. Do not use rechargeable batteries as they may cause excessive power and potentially damage the device's functionality.

## 22. Additional Information

1. When the battery drops below 4.8–5 volts, a warning will be displayed to replace the battery. If the battery drops below 4.2 volts, the key will automatically shut down.
2. To set the time, enter the year, month, day, and time. Please sync with the application to ensure accurate time.
3. During the setup process, if there is no action within 10 seconds, the system will automatically exit.

