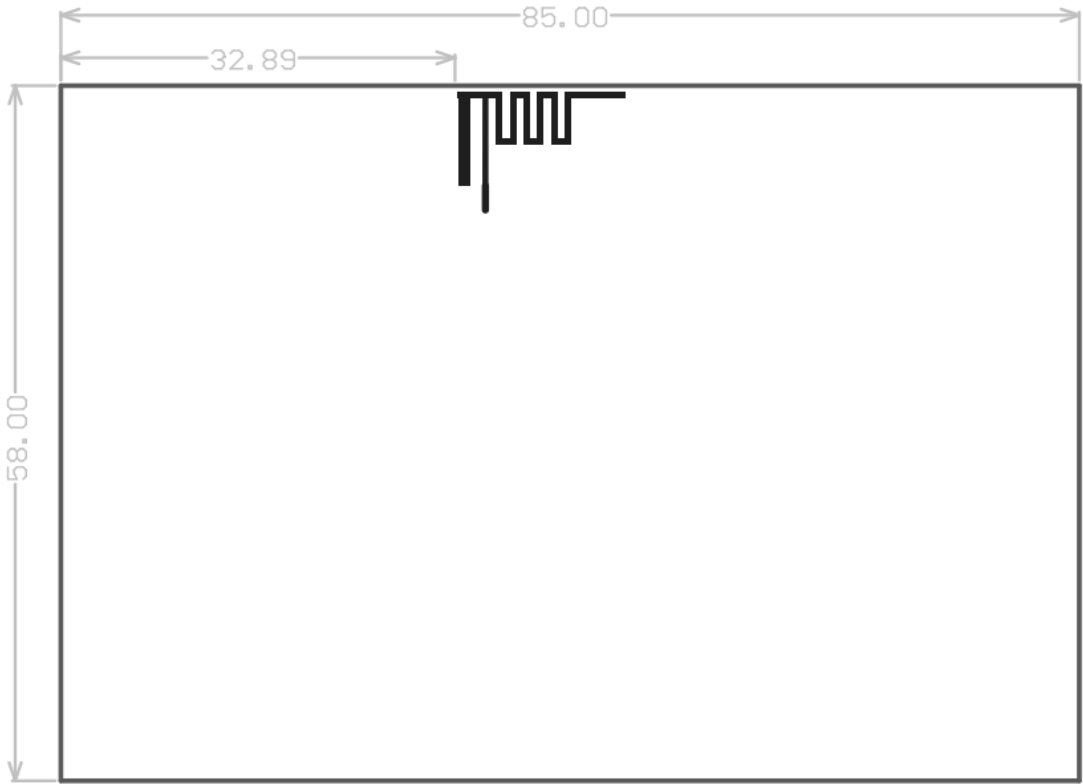


1. Antenna Description:

Antenna type	External antenna
Model	KL-TU
Frequency range	2400-2500MHz
Manufacturer	Shenzhen Kangli Jianyu Technology Co.,Ltd
Adress	No.101, A7, beside the second phase of Fuqiao Third Industrial Zone, Xinhe Community, Fuhai Street, Bao'an District, Shenzhen, China
ANT Peak Gain	1.50 dBi

2. Antenna Photo:



Unit:mm

3. Test Equipment & Conditions

3.1 Test instrument

VSWR is tested using Agilent E5071B connected to a hand mechanism, and the status is free space.

3.2 Test environment and methods

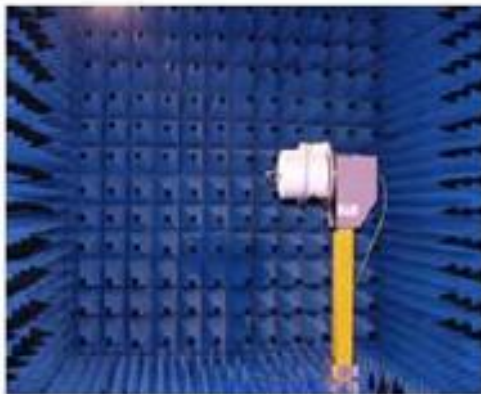
Dark room specifications: ETS-743

TD-SCDMA test equipment: StarPoint SP6010/Agilent 8960

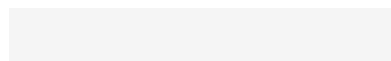
LTE-TDD/FDD-SCDMA test equipment: StarPoint SP8011/CMW500

WCDMA/GSM/CDMA test equipment: Agilent 8960

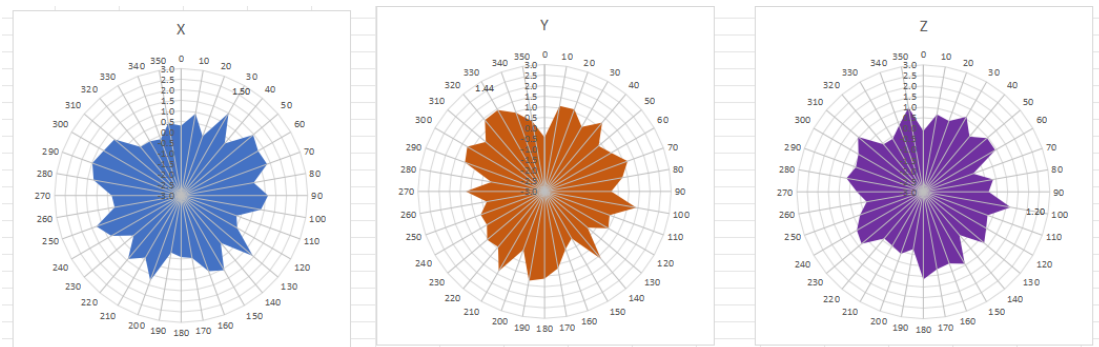
Passive efficiency testing equipment: Agilent Technologies E5071B



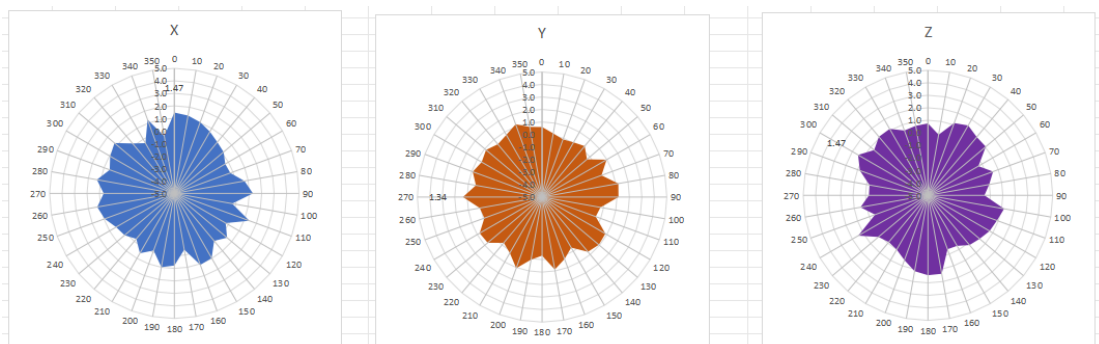
4 . Antenna Radiation Pattern



2400MHz



2450MHz



2500MHz

