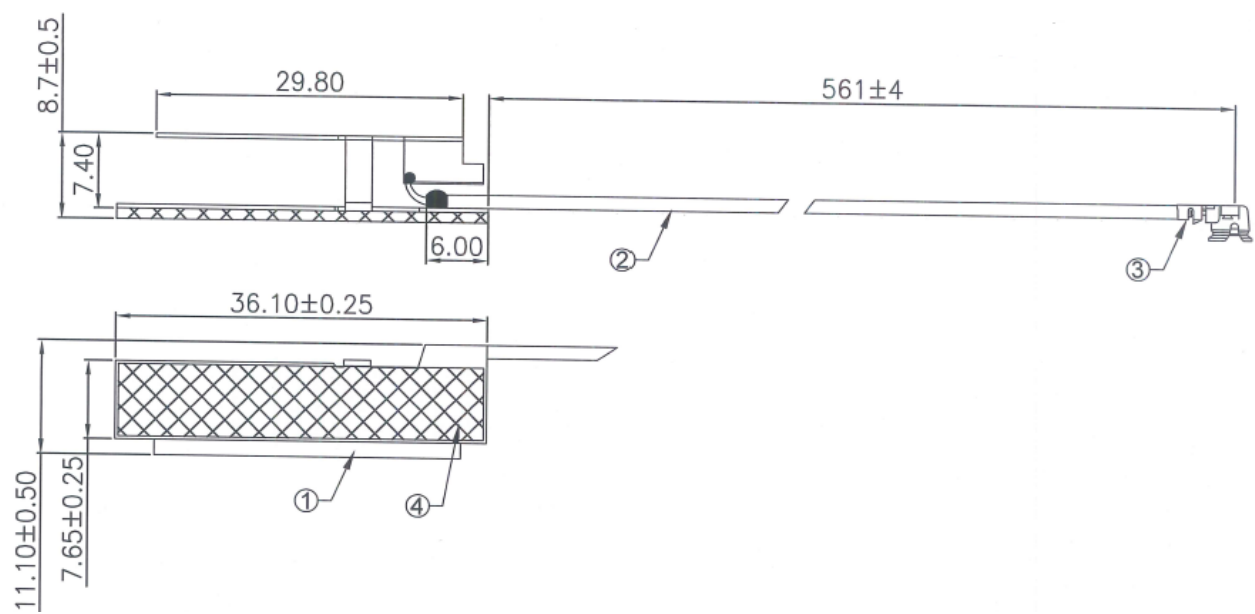


1. Antenna Description:

| | |
|-----------------|--|
| Antenna type | Metal antenna |
| Model | H96Max S905L3-BT |
| Frequency range | 2400-2500MHz |
| Manufacturer | Shenzhen Haochuangyi Technology Co.,Ltd |
| Address | 1101, Building 6, Changyi Industrial Plant, No.1 Lirong Road, Xinshi Community, Dalang Street, Longhua District, Shenzhen, China |
| ANT Peak Gain | 2.16 dBi |

2. Antenna Photo:



3. Test Equipment & Conditions

3.1 Test instrument

VSWR is tested using Agilent E5071B connected to a hand mechanism, and the status is free space.

3.2 Test environment and methods

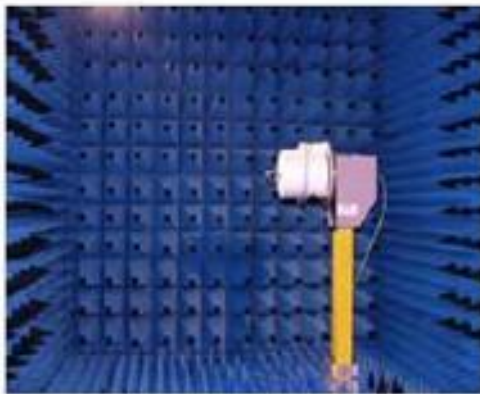
Dark room specifications: ETS-743

TD-SCDMA test equipment: StarPoint SP6010/Agilent 8960

LTE-TDD/FDD-SCDMA test equipment: StarPoint SP8011/CMW500

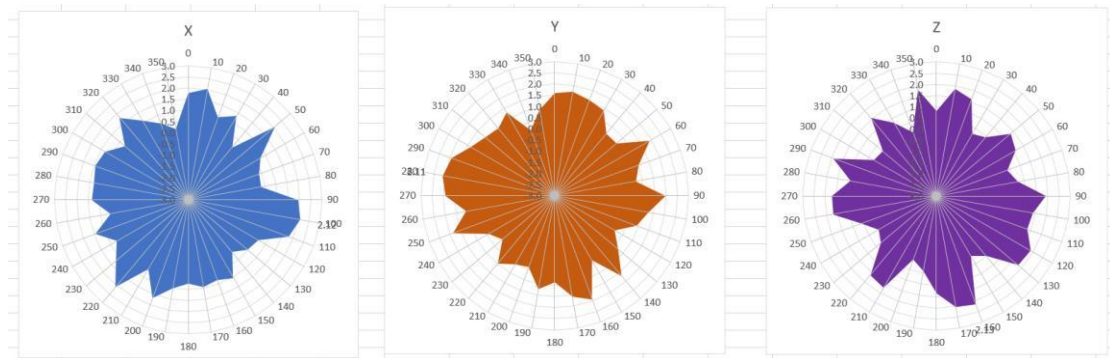
WCDMA/GSM/CDMA test equipment: Agilent 8960

Passive efficiency testing equipment: Agilent Technologies E5071B

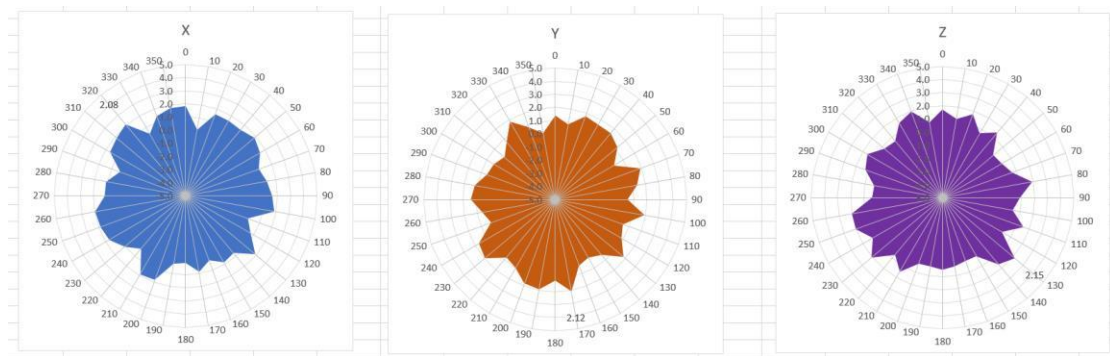


4 . Antenna Radiation Pattern

2400MHz



2450MHz



2500MHz

