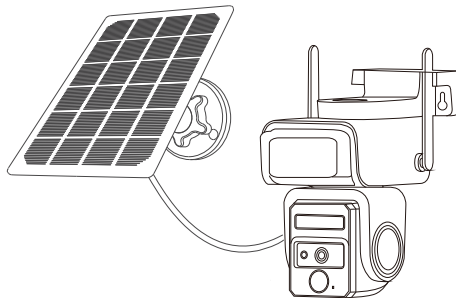


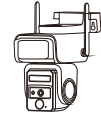
# Quick Start Guide

WiFi Solar Camera



A25S-YY

## Packing List



Camera



Solar panel



Screws



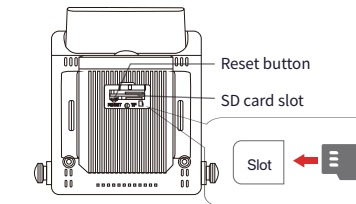
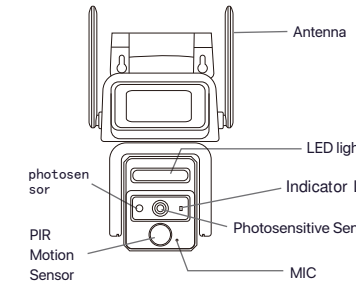
User manual



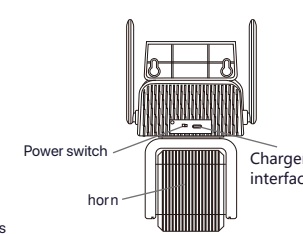
support frame

01

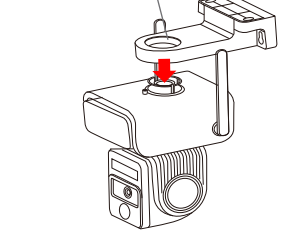
## Product overview



NOTE: Insert the Micro SD card in the direction shown. If inserted incorrectly, the Micro SD card may jam and the device may be damaged.  
SD Card Interface: Supports micro SD cards for local storage (up to 128GB).  
Reset Button: Used to restore the camera to factory settings (press and hold for 5-8s).  
Card Capacity Requirements: 8-128GB.  
Read and write speed requirements: Class10 level.  
File format: FAT32 FAT32.



Align the holes on the bracket with the clips above the camera, then press downward to secure them into the slot

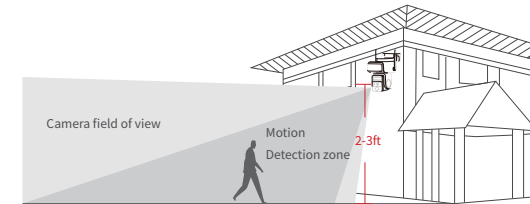


02

## Installation of the camera

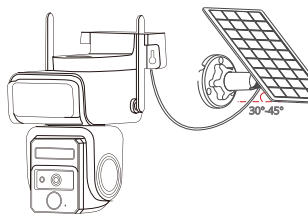
### Select height and position

Hang the camera at a height of 7-10 feet (2-3 meters) above the ground. This height maximizes the range of the camera's motion sensor. Avoid placing the camera in direct sunlight.



### Installation instruction of solar panel

1. Keep the installation angle of solar panels about 30-45° with the horizontal plane, as shown in the picture below.
2. The installation between the solar panel and the camera is shown in the following figure.

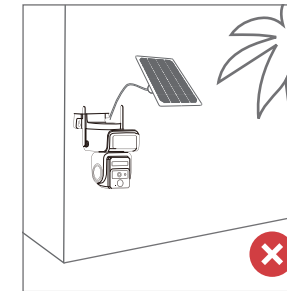
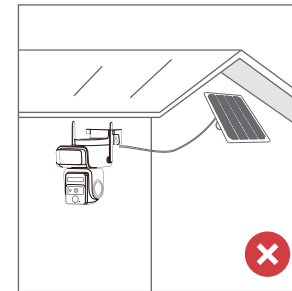
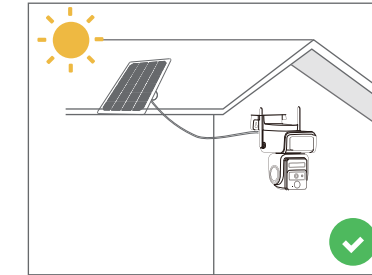


03

## Tips for the installation of solar panel

### Tips for installing solar panels

1. When installing in the northern hemisphere, face the panel to the south, and when installing in the southern hemisphere, face the panel to the north.
2. Take care to install the solar panel so that the sun is not blocked by any items such as eaves, trees branches, etc.



04

## Download and Login



Download the App before establishing a connection with the device.

### Scan the code to download

Scan QR code to download iCam 365 "App"



### App market download

Search for "icam365" in the Apple Store or Google Play and download it!



Scan the QR code to download "icam365"

## Add Device

06



When adding a device, check that the device is powered up

- Step 1**  
Click the Add button
- Step 2**  
Scan the QR code on the machine
- Step 3**  
Select the Wi-Fi to connect to and enter the password



- Step 4**  
Show the QR code to the device lens. When you hear the beep, click next



- Step 5**  
Wait for the distribution network and the addition to complete



**If adding fails, try**

1. Reconnect the power supply of the device once to ensure that it is powered on;
2. Check whether the Wi-Fi connected to the device can access the Internet normally
3. Check if the Wi-Fi password is entered correctly

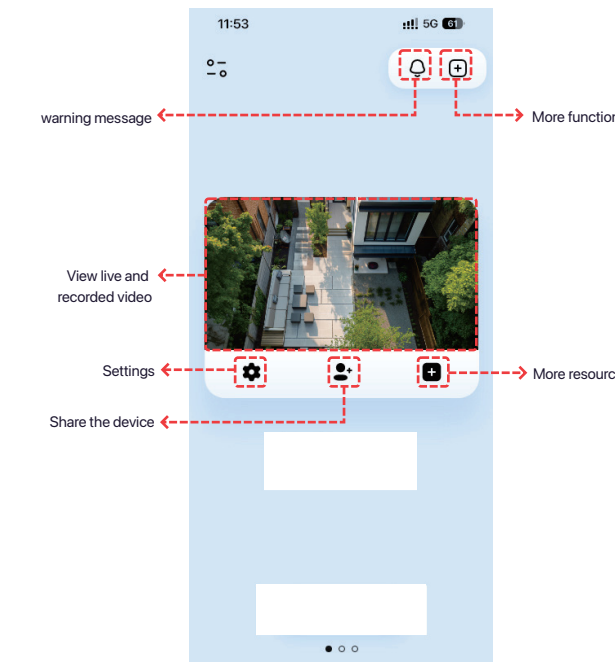
After trying the above methods, it still fails, it is recommended to contact the online customer service for help

## App Functionality Description / Home

07



Each device has a different function, for reference only



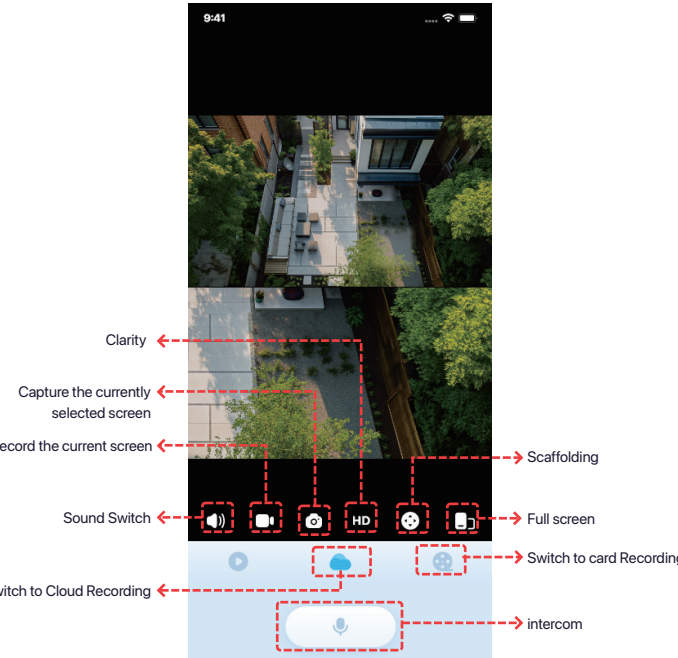
The application will be updated continuously, the interface is based on the app

## App Functionality Description / Live

08



Each device has a different function, for reference only



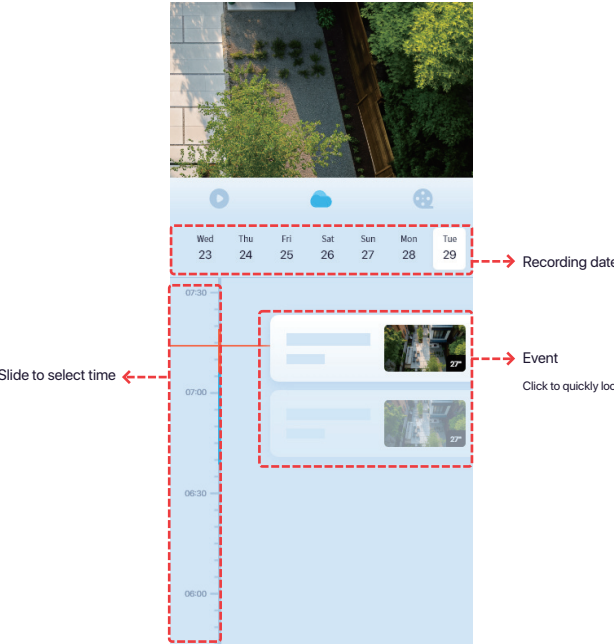
The application will be updated continuously, the interface is based on the app

## App Functionality Description / Videorecord

09



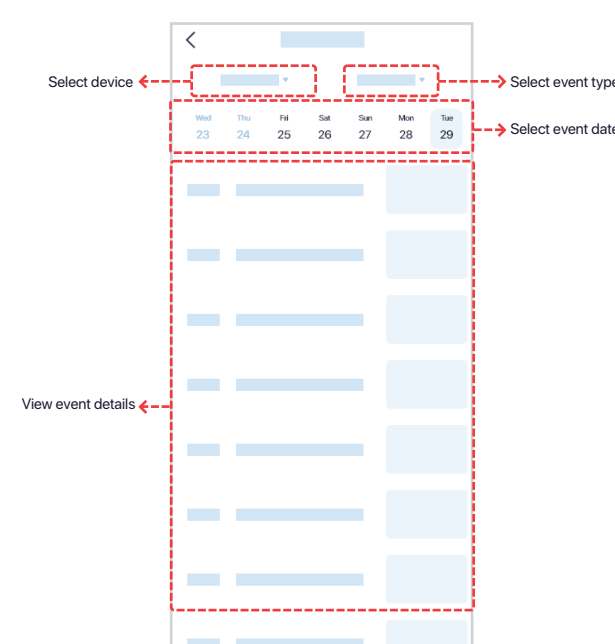
Each device has a different function, for reference only



The application will be updated continuously, the interface is based on the app

## App Functionality Description / Warning message

10



The application will be updated continuously, the interface is based on the app

## Product specifications and descriptions

11

### Indicator light status

Mode	Status
Work mode	Blue
Sleep mode	Red
Charging mode	Red
FII charged mode	Off

### Product specification

Item	Specification
Camera lens	Field of view:90°
Image reslution	Max. 2304*1296
Storage mdia	Micro SD card (Up to 128GB)
Rotation Angle	355° pan, 90° tilt
Battery capacity	8000mAh
Adapter requirement	5V/1.5A

## Common problem

12



If the following methods still don't solve your problem, please contact the customer service of the camera you purchased, or contact the online customer service in the App, and we will solve it for you as soon as possible

Problems	Solution
<b>What should I do if the device is sun successfully added?</b>	check whether the Wi-Fi password is correct, and the network can be connected correctly, then RESET the camera, and add it again after completion.
<b>How to download video?</b>	Click the "Record Screen" button during playback, and click the red button after recording, and the video file will be saved to the phone;
<b>What if the display device is offline?</b>	First confirm whether the power supply and network are normal, and there is no problem before powering off the camera and restarting it. If the connection is still disconnected after restarting, please remove the camera from the APP and add it again.
<b>The memory card is full, what should I do?</b>	No manual processing is required. When the remaining memory card capacity is less than or equal to 500M, the camera will automatically overwrite the oldest video file.
<b>What should I do if I cannot receive the warning</b>	1. Confirm that the message in the App device settings is on 2. Apple mobile phone: In the mobile phone settings, find the "IACM365" application and enable the "message notification" permission. Log out of "IACM365" and log in again. Android phone: In the message notification, find "IACM365" and enable the "Allow Notification" permission. Alarm messages are stored for up to 7 days
<b>How to share the device with others?</b>	Click share and send the link to the sharer. The sharer can complete the operation step by step according to the content of the connection. Share up to 10 people per device

**FCC Warning Statement:** Changes or modifications to this unit not expressly approved by the party responsible for compliance could void the user's authority to operate the equipment. This equipment has been tested and found to comply with the limits for a Class B digital device, pursuant to Part 15 of the FCC Rules. These limits are designed to provide reasonable protection against harmful interference in a residential installation. This equipment generates, uses and can radiate radio frequency energy and, if not installed and used in accordance with the instructions, may cause harmful interference to radio communications. However, there is no guarantee that interference will not occur in a particular installation. If this equipment does cause harmful interference to radio or television reception, which can be determined by turning the equipment off and on, the user is encouraged to try to correct the interference by one or more of the following measures:

- Reorient or relocate the receiving antenna.
- Increase the separation between the equipment and receiver.
- Connect the equipment into an outlet on a circuit different from that to which the receiver is connected.
- Consult the dealer or an experienced radio/TV technician for help.

This device complies with Part 15 of the FCC Rules. Operation is subject to the following two conditions: (1) this device may not cause harmful interference, and (2) this device must accept any interference received, including interference that may cause undesired operation.

#### **FCC Radiation Exposure Statement**

The antennas used for this transmitter must be installed to provide a separation distance of at least 20 cm from all persons and must not be co - located for operating in conjunction with any other antenna or transmitter.