

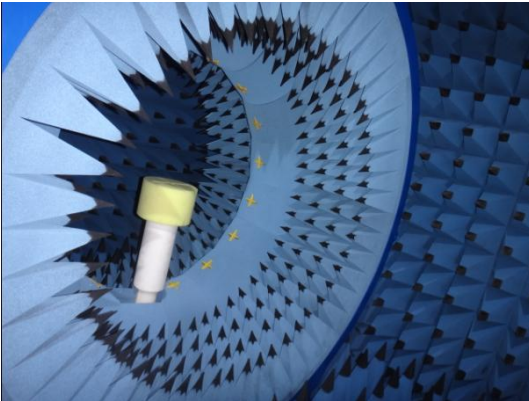
Test report



Customer name	Yibo Tong	Project name	E2509
Commissioning band	4P/W1 2 4 5 8/B1 2 3 4 5 7 8 12 17 18 19 20 26 28 66 38 40 41	Structural mode	FPC
Radio frequency engineer	Xiang Yi	Structural engineer	Du Qiang
Antenna type	LOOP	date	2025/7/2



StarLab 3D laboratory, originally imported from France SATIMO Company, can accurately and quickly test the TRP, TIS, efficiency, gain, apple chart, direction chart and other parameter data of communication terminal products such as mobile phones, tablets and notebooks.



Gain test

Freq	Gain	Freq	Gain	Freq	Gain
1560	0.4	2400	0.6	5100	-1.5
1570	0.5	2420	0.8	5200	-1.3
1580	0.4	2440	0.8	5300	-0.82
		2460	0.8	5400	-1.2
		2480	0.8	5500	-1.4
		2500	0.7	5600	-3.5
				5700	-2.1
				5800	-2.7

深圳市安弗特电子有限公司

深圳市无限智联科技有限公司

Freq	Gain	Freq	Gain	Freq	Gain
700	-2.7	950	-1.6	2160	-0.7
710	-2.9	960	-1.3	2180	0.7
720	-2.9	1700	-0.8	2300	0.7
730	-2.7	1720	-0.9	2320	0.8
740	-2.9	1740	-0.9	2340	0.8
750	-2.6	1760	-0.8	2360	1.2
760	-2.5	1780	-0.8	2380	0.7
770	-2.0	1800	-1.2	2400	-0.7
780	-2.0	1820	-0.8	2420	-0.5
790	-2.0	1840	-0.7	2440	-0.8
800	-2.8	1860	-0.8	2460	0.6
810	-5.1	1880	-0.8	2480	0.8
820	-5.8	1900	-0.7	2500	-0.6
830	-4.4	1920	-0.8	2520	-0.45
840	-5.4	1940	0.15	2540	-0.7
850	-5.1	1960	0.02	2560	-0.7
860	-5.5	1980	0.06	2580	-1.2
870	-5.5	2000	-0.6	2600	-1.1
880	-5.6	2020	-0.9	2620	-1.6
890	-5.8	2040	-0.9	2640	-1.7
900	-5.1	2060	-0.5	2660	-1.2
910	-5.8	2080	-1.0	2680	-1.0
920	-5.7	2100	-0.5	2700	-0.7
930	-1.5	2120	-0.5		
940	-1.5	2140	-0.3		

主集增益

深圳市安弗特电子有限公司

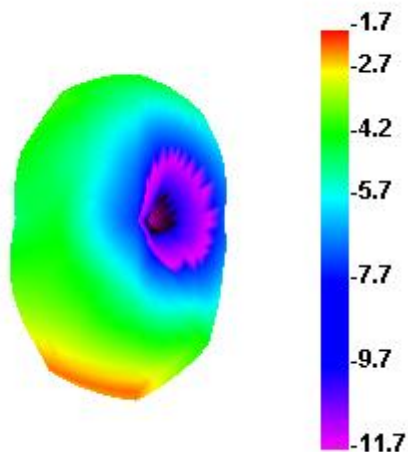
深圳市无限智联科技有限公司

Freq	Gain	Freq	Gain
1700	-3.1	2300	-2.0
1720	-3.2	2320	-2.1
1740	-3.1	2340	-2.5
1760	-3.1	2360	-2.1
1780	-3.2	2380	-2.5
1800	-3.2	2400	-1.9
1820	-2.8	2420	-1.5
1840	-2.7	2440	-1.8
1860	-2.6	2460	-1.5
1880	-2.5	2480	-1.4
1900	-2.5	2500	-1.5
1920	-2.3	2520	-1.3
1940	-2.2	2540	-1.1
1960	-2.1	2560	-0.8
1980	-1.7	2580	-1.1
2000	-1.6	2600	-1.2
2020	-1.7	2620	-1.8
2040	-0.9	2640	-1.8
2060	-0.6	2660	-1.2
2080	-0.7	2680	-1.0
2100	-1.2	2700	-1.5
2120	-1.2		
2140	-1.3		

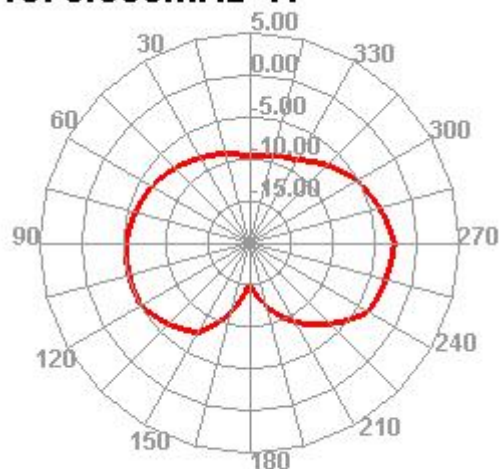
分集天线增益

GPS

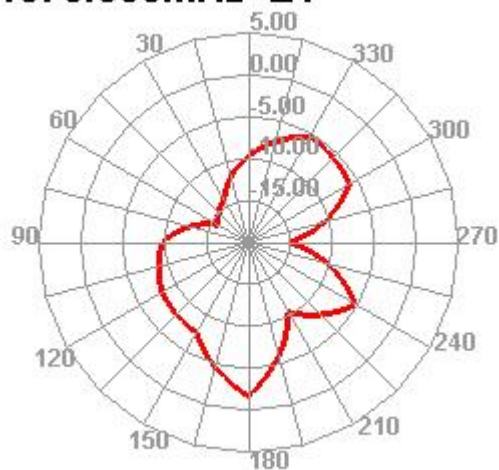
1575.000MHz



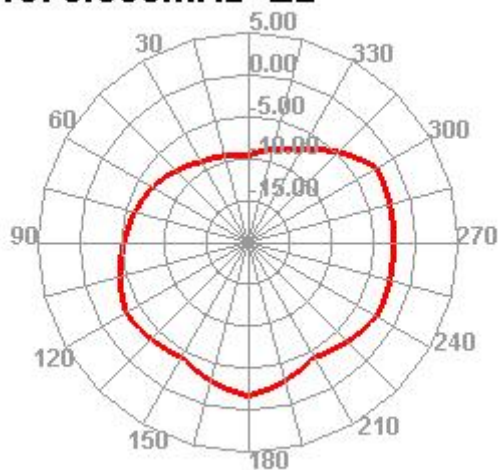
1575.000MHz H



1575.000MHz E1

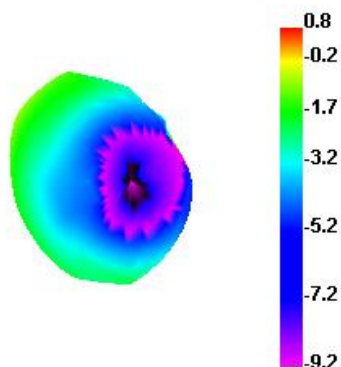


1575.000MHz E2

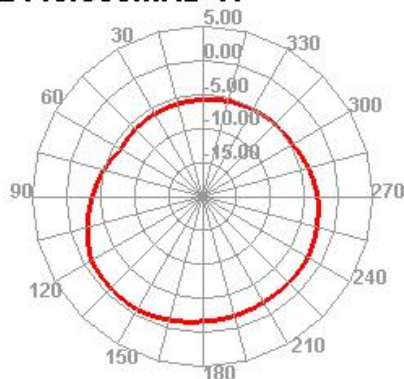


2.4G-WiFi

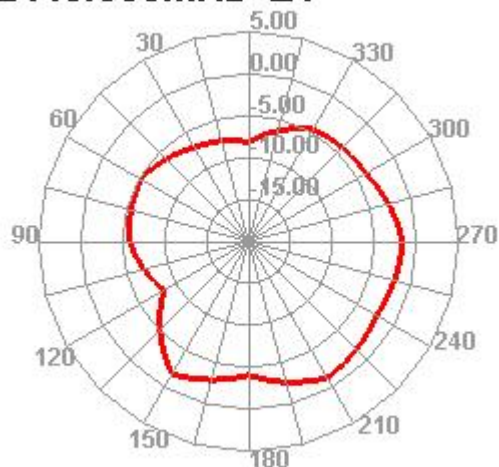
2440.000MHz



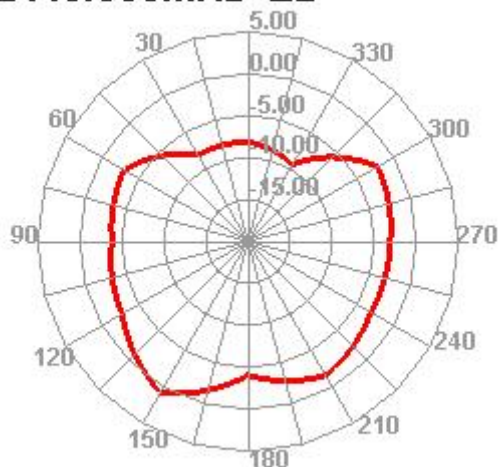
2440.000MHz H



2440.000MHz E1

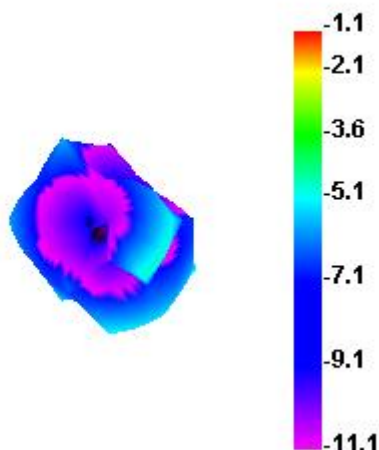


2440.000MHz E2

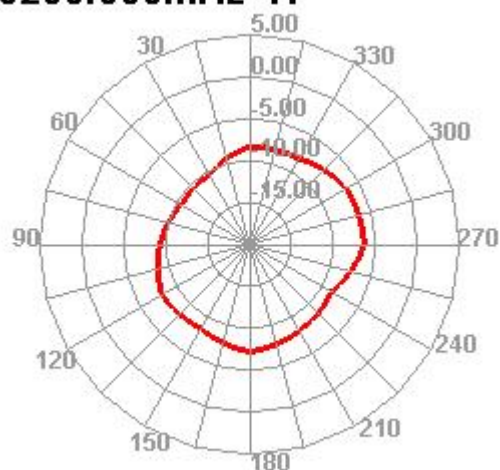


5G-WIFI

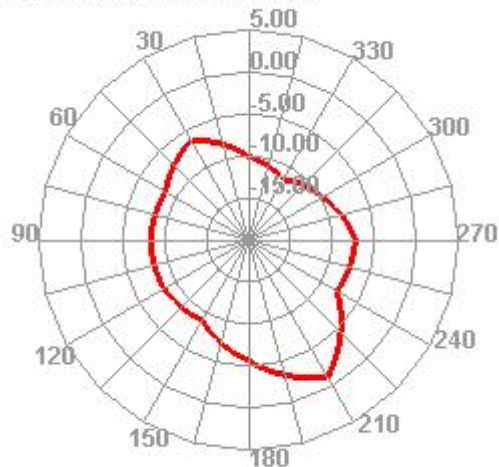
5200.000MHz



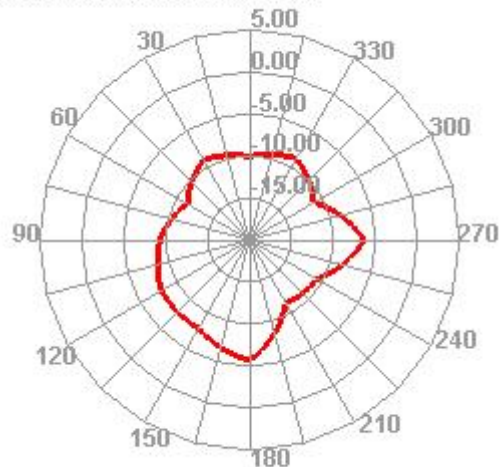
5200.000MHz H



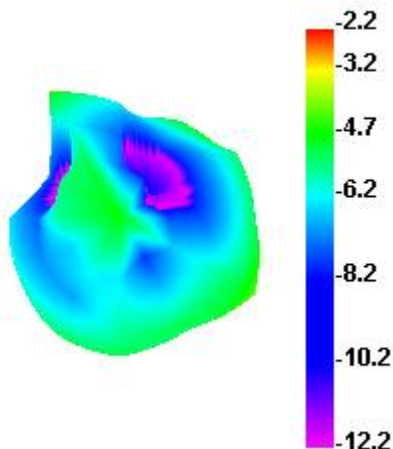
5200.000MHz E1



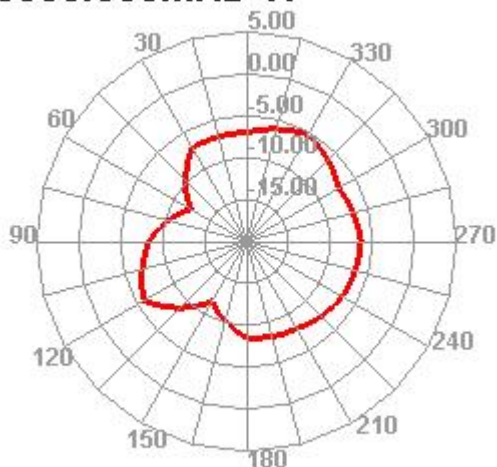
5200.000MHz E2



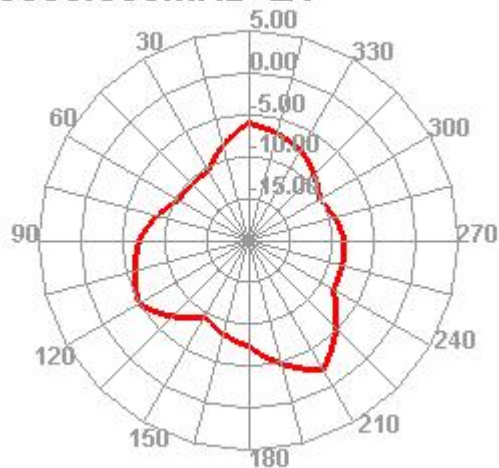
5800.000MHz



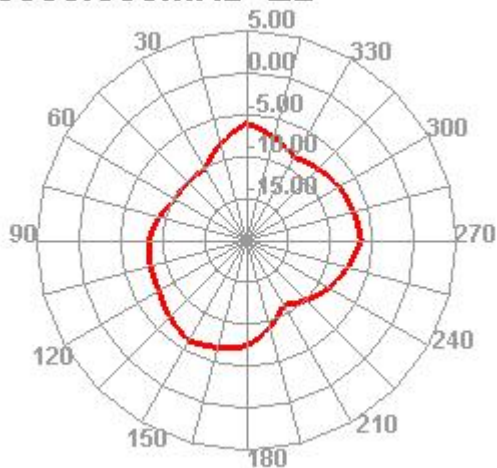
5800.000MHz H



5800.000MHz E1

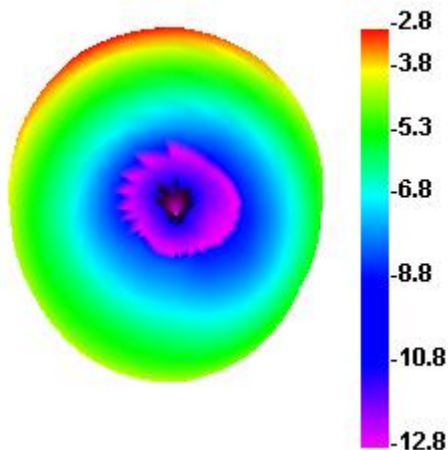


5800.000MHz E2

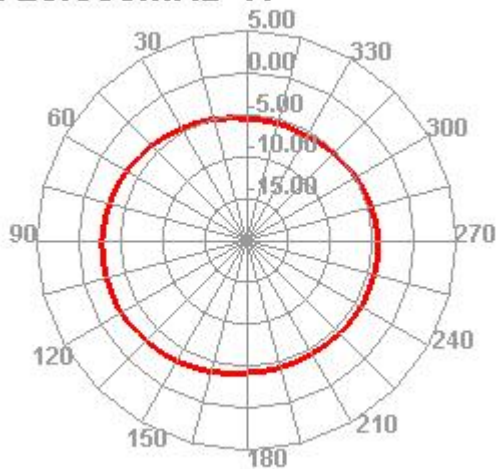


LTE-B12 17 28

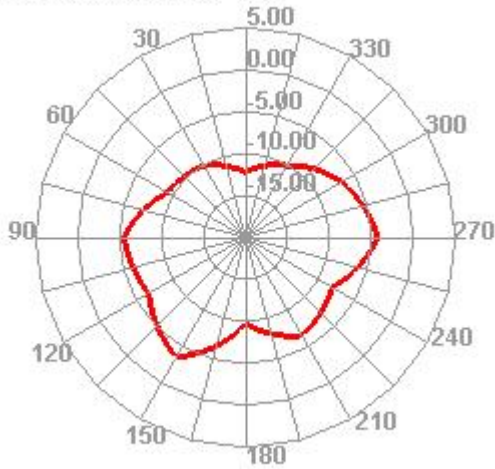
720.000MHz



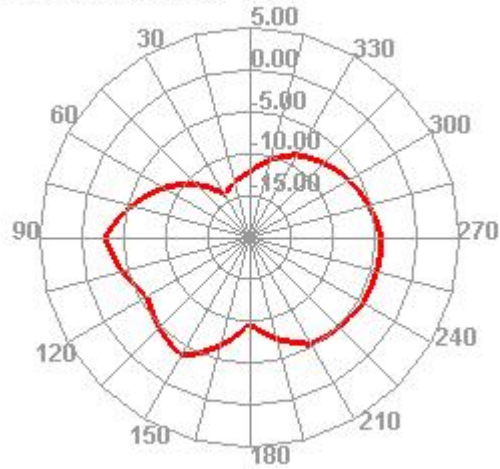
720.000MHz H



720.000MHz E1

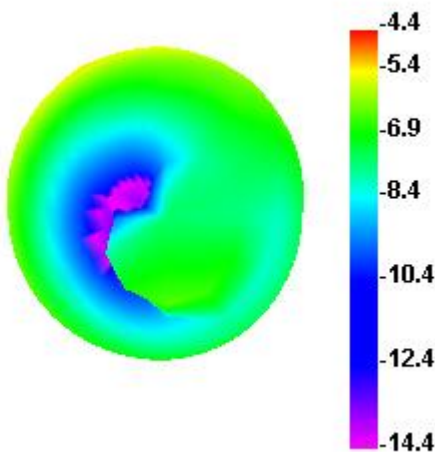


720.000MHz E2

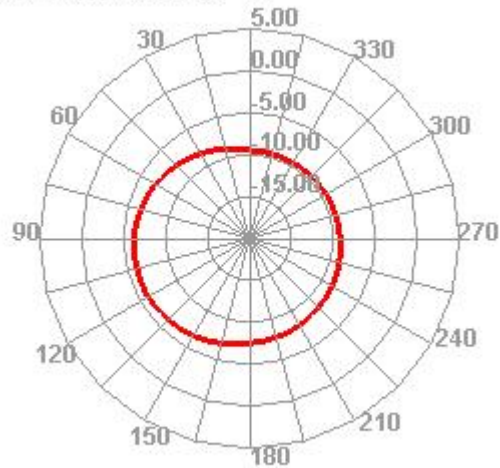


LTE-B5 1819 20 26 W5 GSM850

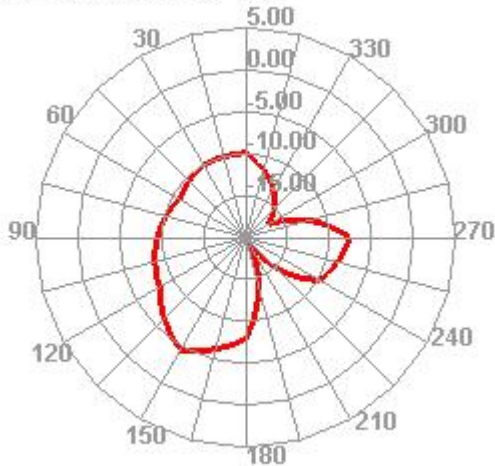
850.000MHz



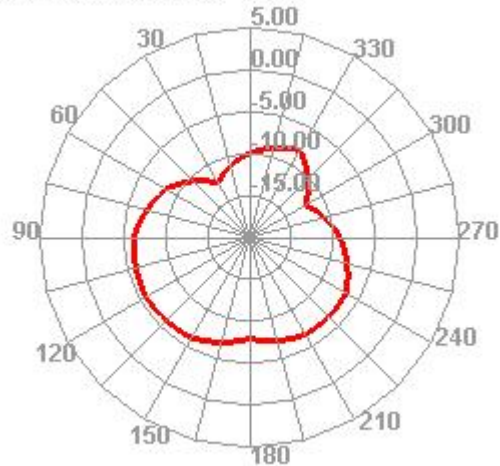
850.000MHz H



850.000MHz E1

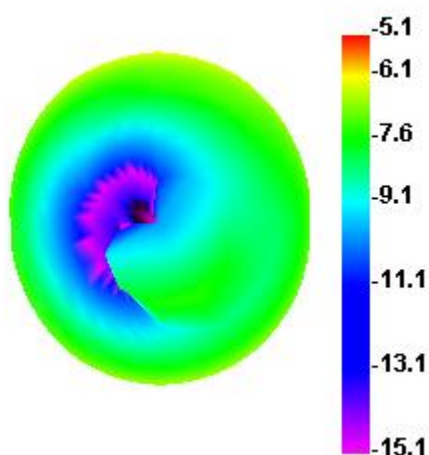


850.000MHz E2

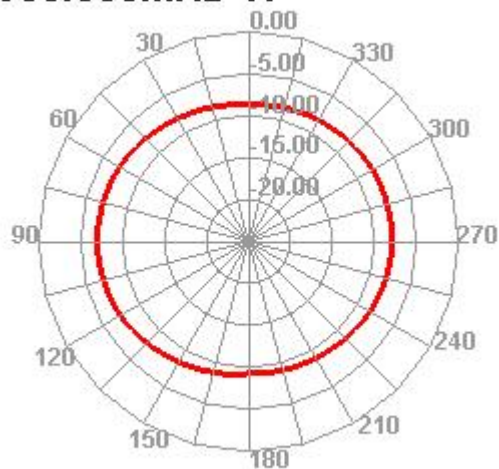


LTE-B8 W8 GSM900

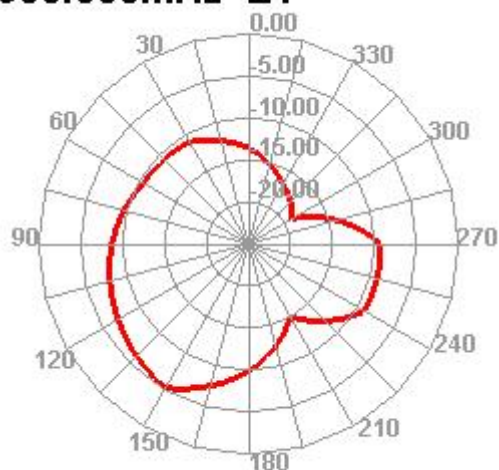
900.000MHz



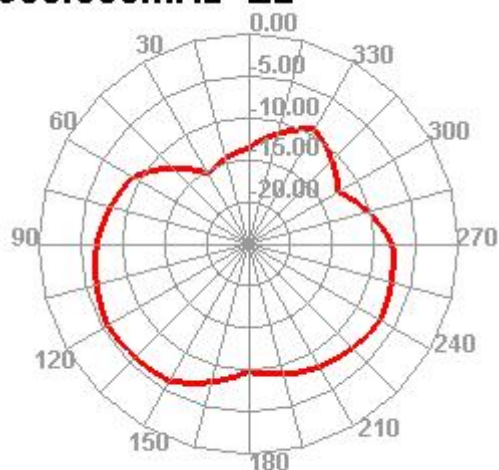
900.000MHz H



900.000MHz E1

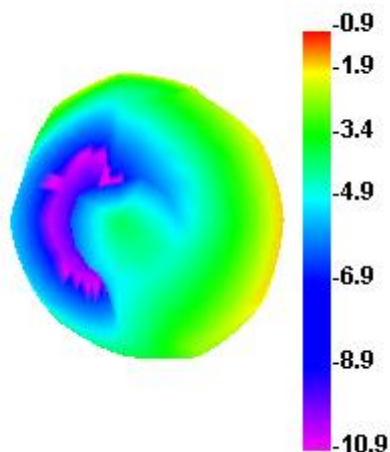


900.000MHz E2

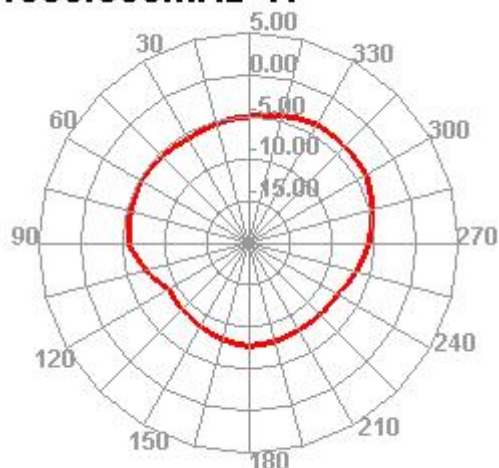


LTE-B3 4 66 W4 DCS1800

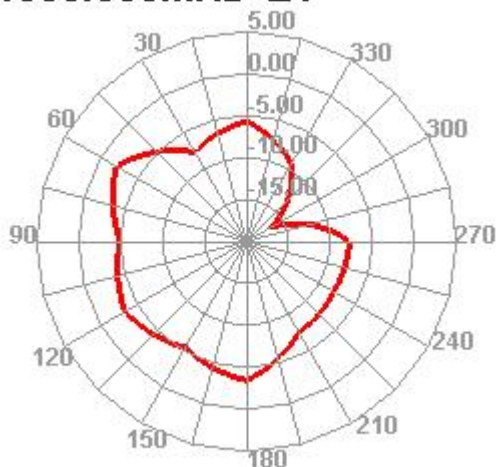
1800.000MHz



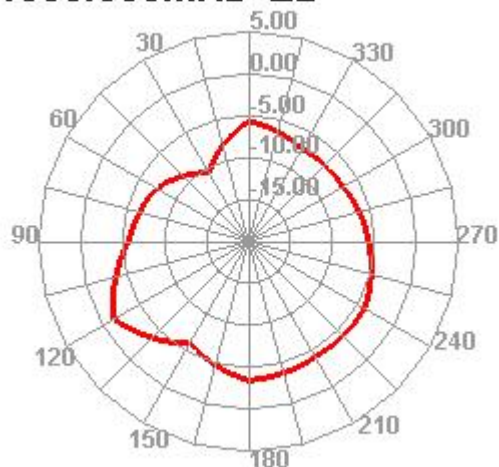
1800.000MHz H



1800.000MHz E1

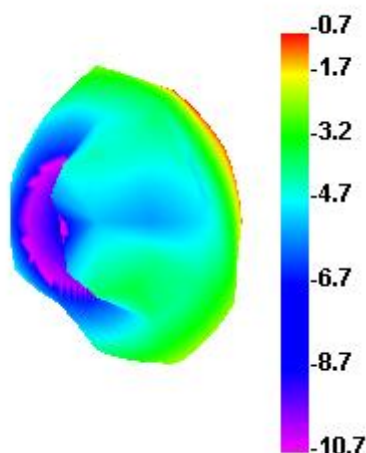


1800.000MHz E2

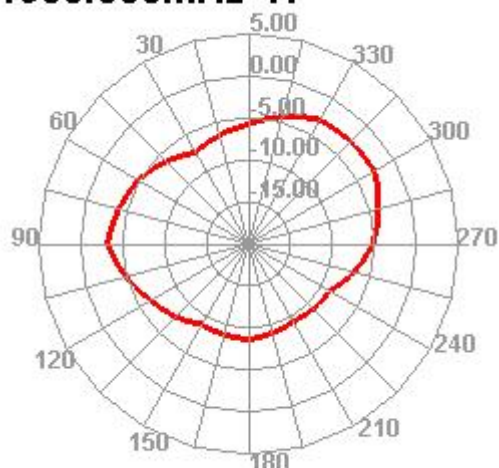


LTE-B2 W2 PCS1900

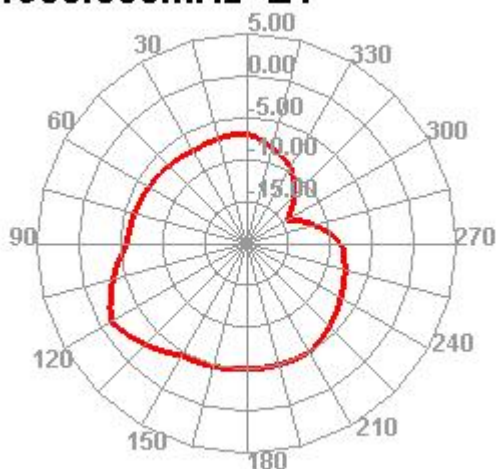
1900.000MHz



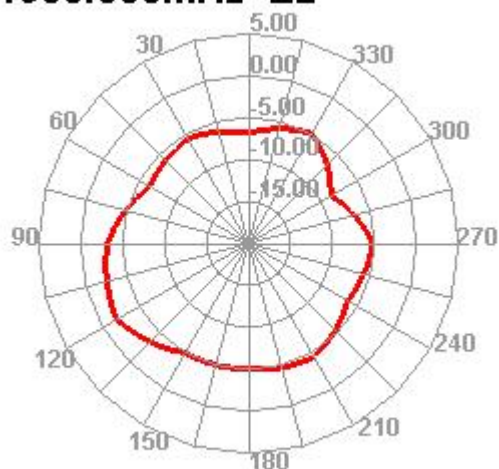
1900.000MHz H



1900.000MHz E1

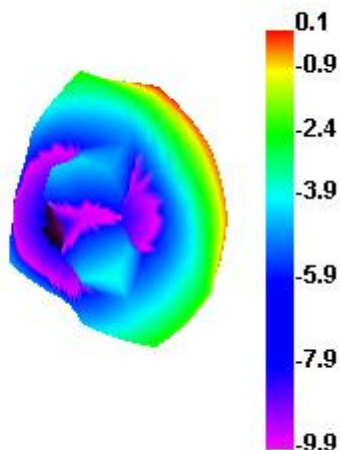


1900.000MHz E2

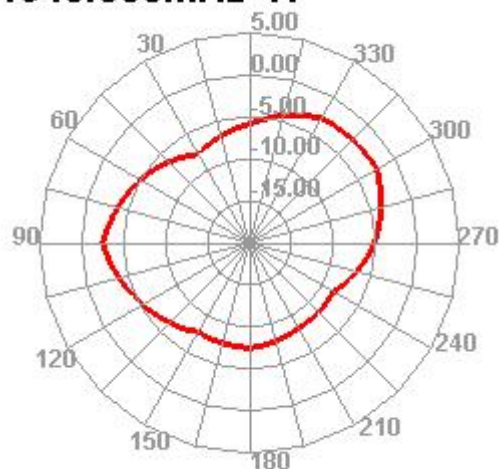


LTE-B1 W1

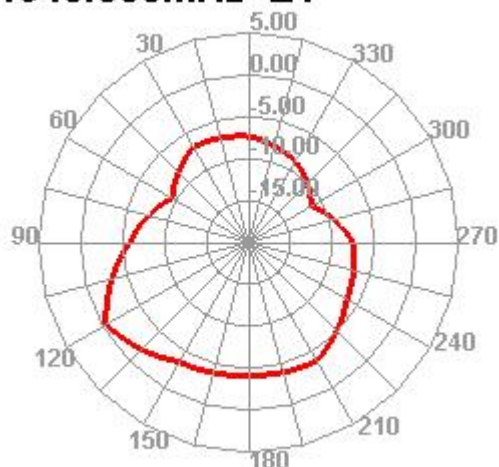
1940.000MHz



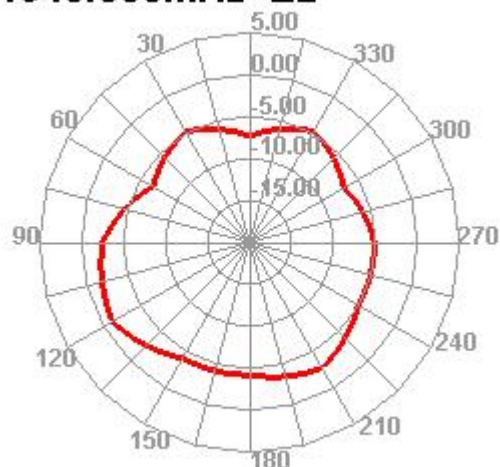
1940.000MHz H



1940.000MHz E1

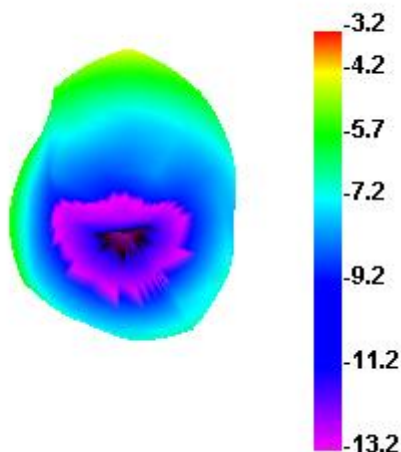


1940.000MHz E2

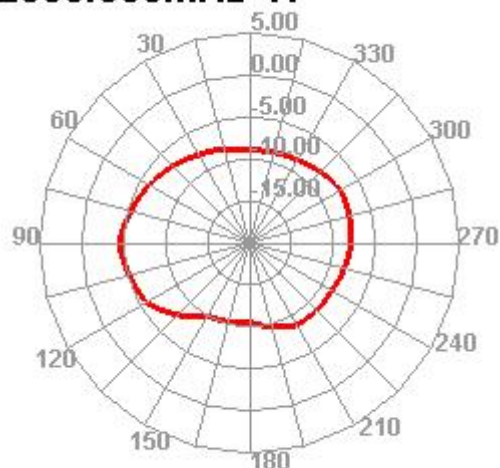


LTE-B40

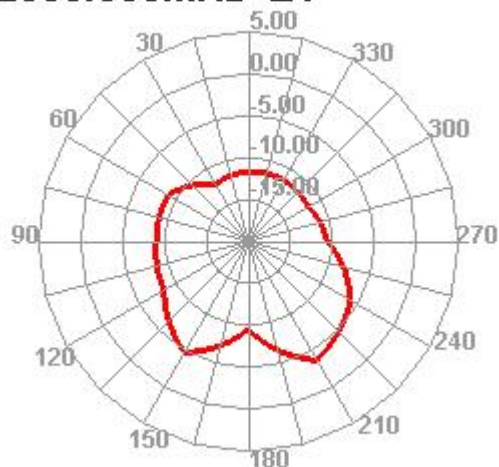
2300.000MHz



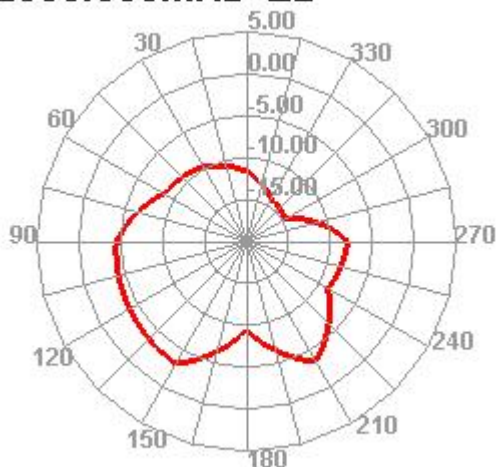
2300.000MHz H



2300.000MHz E1

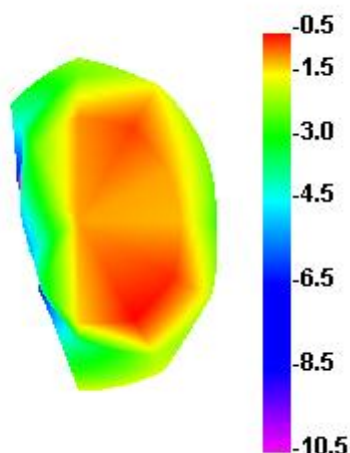


2300.000MHz E2

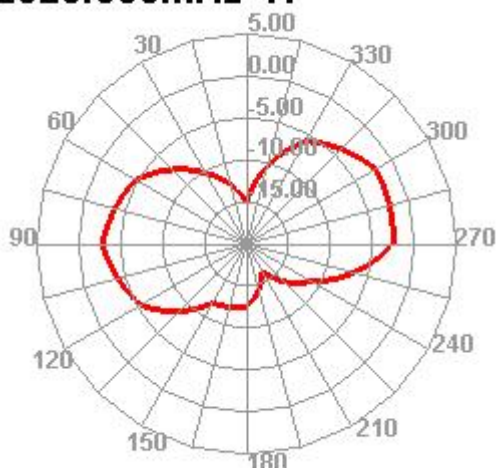


LTE-B7 38 41

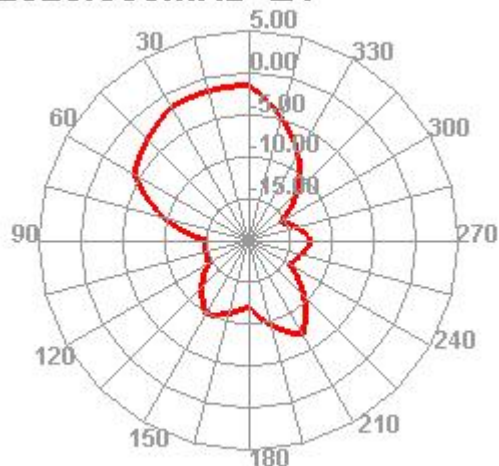
2520.000MHz



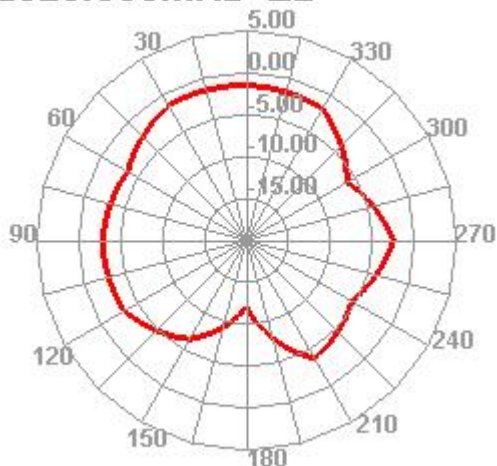
2520.000MHz H



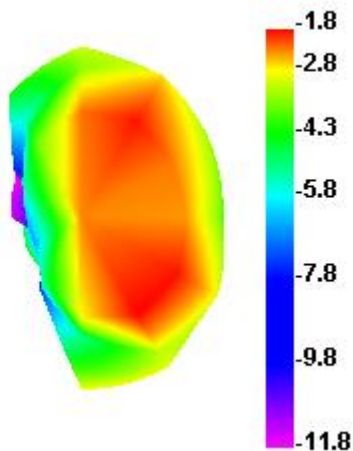
2520.000MHz E1



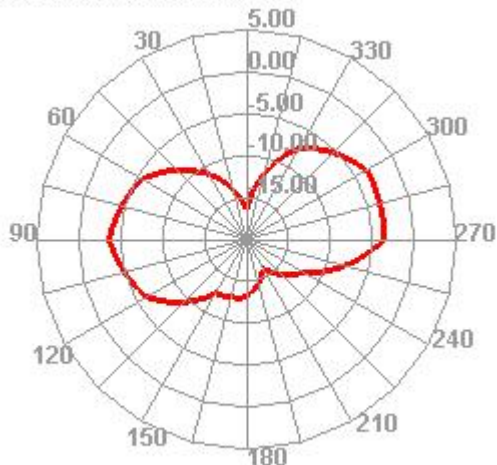
2520.000MHz E2



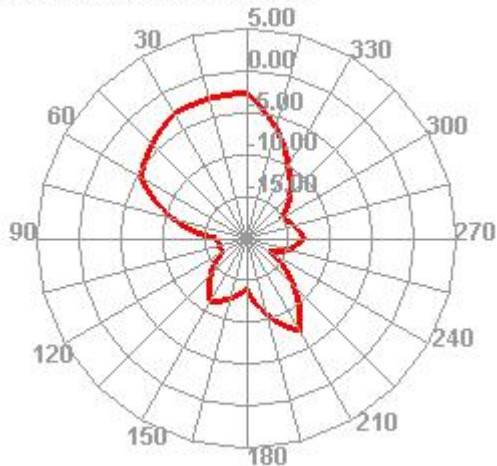
2540.000MHz



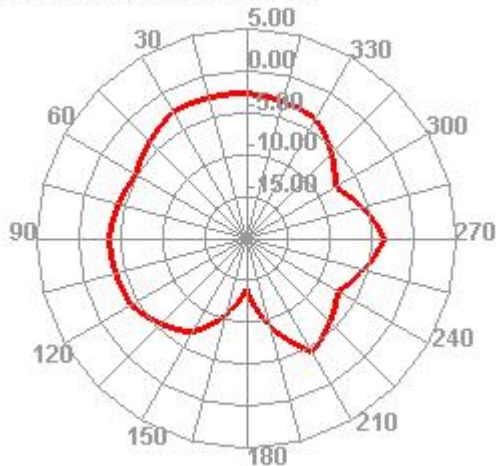
2540.000MHz H



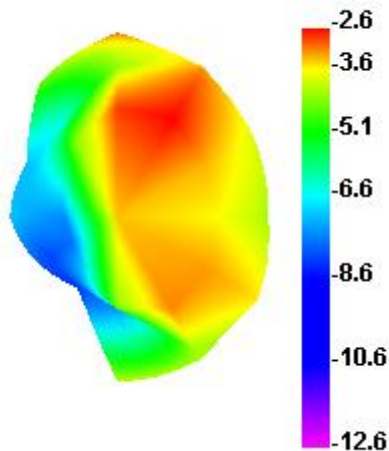
2540.000MHz E1



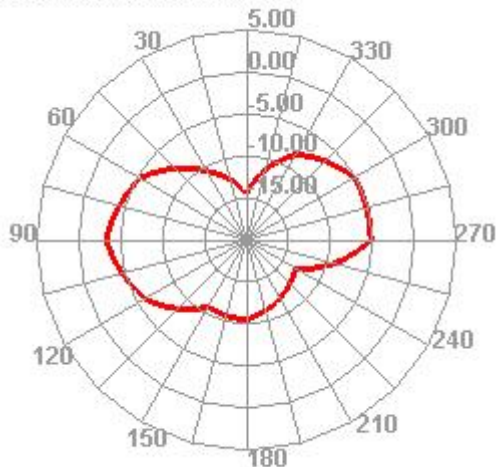
2540.000MHz E2



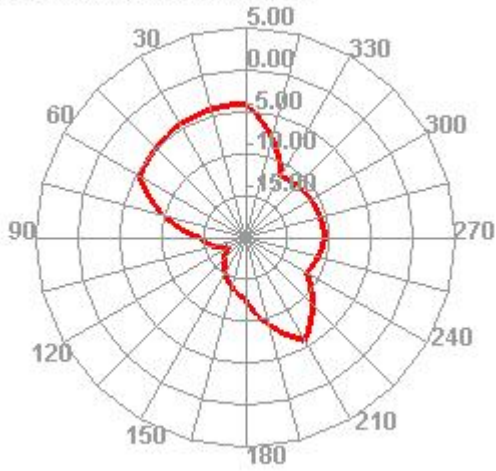
2600.000MHz



2600.000MHz H



2600.000MHz E1



2600.000MHz E2

