

# SMSRECEIVE

## Wireless Locator

User Manual

Model: SMSRECEIVE IF02



Works with

**Apple Find My**

# Specifications

The Wireless Locator World Tag is designed for precision tracking with Apple's Find My network.

- Product Dimensions: 41.2x44.2x9mm
- Weight: 9 grams
- Operating Range: Up to 200 ft (60 m) in open environments (range may vary with obstacles).
- Battery: CR2032 (replaceable, up to 1 year lifespan).
- Working Temperature: -10°C to 65°C (-10°F to 149°F).
- Connectivity: Bluetooth.
- Compatibility: iOS devices with iOS 17.6.1 or later.
- Firmware Updates: Via the Apple Find My app.
- Included Items: Wireless Locator, User Manual.

## Introduction

The Wireless Locator World Tag integrates seamlessly with Apple's Find My network, enabling you to locate valuables such as keys, wallets, or bags. The Wireless Locator works exclusively with Apple Find My to help you track your belongings. Quick setup via the Find My app, allowing you to play a sound for nearby items.

- Compact, lightweight design for easy attachment to items.
- Replaceable battery providing up to one year of operation.
- Secure tracking with privacy-focused, encrypted networks.

- Optimized for Apple devices with support for automatic firmware updates.

## System Requirements:

- Requires iPhone or iPod Touch with iOS 17.6.1 or later.
- iPad with iPadOS 17.6.1 or later.
- iMac or MacBook with macOS 15 or later.

## Button Instructions

### Turning On

1. Press and hold the button for approximately 2 seconds.
2. You will hear 1 beep.
3. Release your finger after beep. The device is now turned on and ready for pairing with the Find My app.

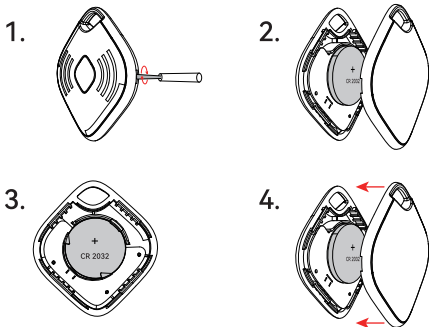
### Factory Reset

1. Press and hold the button continuously.
2. You will hear the following sequence of sounds:
  - 1 beep,
  - 2 beeps,
  - 3 beeps.
3. Keep holding the button for an additional 5 seconds after the third beep.
4. When you hear a long beep, release the button. The device has now been reset to factory settings.

# Battery Replacement

1. Take off the cove
2. Remove the old battery with a paperclip or similar object.
3. Insert a new CR2032 battery (positive side facing up).
4. Put on the back cover

**Note:** Always recycle used batteries responsibly.



## Pairing with Find My App

Follow these steps to pair your Wireless Locator with the Apple Find My app:

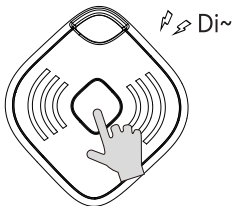
## 1. Prepare Your iOS Device:

Ensure that your device's operating system is iOS 17.6.1 or later. Turn on Bluetooth by navigating to **Settings > Bluetooth** and enabling it.



## 2. Activate the Wireless Locator:

Press and hold the button on the Wireless Locator for approximately 2 seconds until you hear 1 beep.

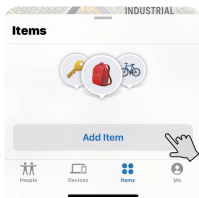


### 3. Open the Find My App:

On your iOS device, open the **Find My** app.  
Tap on the **Items** tab at the bottom of the screen.

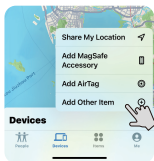
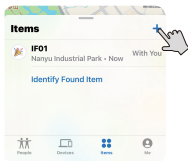
### 4. Add the Wireless Locator:

Tap **Add Item** and select **Other Supported Item**.  
Place the Wireless Locator near your iOS device (within 5 cm) to establish a connection.  
Follow the on-screen instructions to complete the pairing process.



### 5. Additional Pairing Options:

For subsequent pairing with additional items or devices, tap the  **"+"**  button, then select **Add Other Item**. Follow the prompts.



## 6. Verify Pairing:

Once successfully paired, the Wireless Locator will appear in the **Items** list within the Find My app. You can now track its location or play a sound to locate nearby items.

## Troubleshooting

### Cannot Pair with Find My:

- Ensure the locator is powered on and within range.
- Verify your device meets compatibility requirements.
- Reset the locator and retry.

### Device Malfunctions:

- Replace the battery if it is low.
- Reset the device to factory settings.

### Intermittent Connection:

- Remove obstructions between the device and locator.
- Update the firmware via the Find My app.

# Safety Information

1. Keep batteries out of reach of children and pets to prevent choking or ingestion risks.
2. Do not expose the device to water, chemicals, or extreme temperatures.
3. Only use CR2032 batteries. Improper replacements may cause fire or electric shock risks.
4. Dispose of used batteries at designated recycling locations.

## Choking Hazard

The Wireless Locator and its components may pose a choking risk. Keep away from children.

## FCC Compliance

This device complies with Part 15 of the FCC Rules. Operation is subject to the following two conditions:

1. This device may not cause harmful interference.
2. This device must accept any interference received, including interference that may cause undesired operation.

## Important Considerations:

### Interference Management

1. The Wireless Locator operates on a low-power Bluetooth



signal, and as such, is designed to coexist with other devices in typical residential and commercial environments.

2. If you notice any interference with other electronic devices (e.g., radios, TVs, or Wi-Fi routers), attempt the following troubleshooting steps:
1. **Reorient or Relocate Antennas:** If your receiver or device has an antenna, try adjusting the position of the antenna.
2. **Increase Separation:** Move the Wireless Locator or the interfering device farther apart. Aim for a distance of at least 3 feet (1 meter) between devices.
3. **Try a Different Circuit:** Plug the device into a different power outlet or circuit to isolate any interference originating from a specific power source.

## Unauthorized Modifications:

1. **Modification Warnings:** The device must not be altered in any way. Unauthorized changes to the device, such as internal modifications, antenna changes, or alterations to the software or hardware configuration, can cause violations of FCC regulations and may result in the user losing the legal right to operate the device.
2. Any modifications or changes made to the device without explicit approval from the manufacturer will void the device's FCC compliance certification and can cause operational issues that might not be resolved through normal troubleshooting procedures.

# Legal notice

Use of the Works with Apple badge means that a product has been designed to work specifically with the technology identified in the badge and has been certified by the product manufacturer to meet Apple Find My network product specifications and requirements. Apple is not responsible for the operation of this device or use of this product or its compliance with safety and regulatory standards.

Apple, Apple Find My, Apple Watch, Find My, iPhone, iPad, iPadOS, Mac, macOS and watchOS are the trademarks of Apple Inc. IOS is a trademark or registered trademark of Cisco in the U.S. and other countries and is used under license.

## Manufacturer:

TOPVANS PRO LIMITED

FCC Caution.

This device complies with part 15 of the FCC Rules. Operation is subject to the following two conditions:

- (1) This device may not cause harmful interference, and
- (2) this device must accept any interference received, including interference that may cause undesired operation.

Any Changes or modifications not expressly approved by the party responsible for compliance could void the user's authority to operate the equipment.

Note: This equipment has been tested and found to comply with the limits for a Class B digital device, pursuant to part 15 of the FCC Rules. These limits are designed to provide reasonable protection against harmful interference in a residential installation. This equipment generates uses and can radiate radio frequency energy and, if not installed and used in accordance with the instructions, may cause harmful interference to radio communications. However, there is no guarantee that interference will not occur in a particular installation. If this equipment does cause harmful interference to radio or television reception, which can be determined by turning the equipment off and on, the user is encouraged to try to correct the interference by one or more of the following measures:

- Reorient or relocate the receiving antenna.
- Increase the separation between the equipment and receiver.
- Connect the equipment into an outlet on a circuit different from that to which the receiver is connected.
- Consult the dealer or an experienced radio/TV technician for help.

FCC Radiation Exposure Statement:

The device has been evaluated to meet general RF exposure requirement. The device can be used in portable exposure condition without restriction.