

1. Antenna Description:

Antenna type	PIFA antenna
Model	FW983A
Frequency range	2400-2500MHz, 5745-5825MHz
Manufacturer	Shenzhen Fuallwin Technology Company Ltd
Address	1st Floor, Building 8, Longbi Industrial Zone, No. 27 Dafa Road, Bantian Strcet, Longgang District, Shenzhen City, Guangdong, China
ANT Peak Gain	1.20 dBi for 2400-2500MHz 1.12 dBi for 5745-5825MHz

2. Antenna Photo:

Length:32.78mm
Width:2.90mm



3. Test Equipment & Conditions

3.1 Test instrument

VSWR is tested using Agilent E5071B connected to a hand mechanism, and the status is free space.

3.2 Test environment and methods

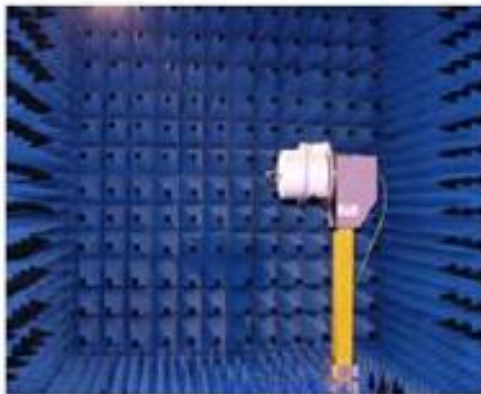
Dark room specifications: ETS-743

TD-SCDMA test equipment: StarPoint SP6010/Agilent 8960

LTE-TDD/FDD-SCDMA test equipment: StarPoint SP8011/CMW500

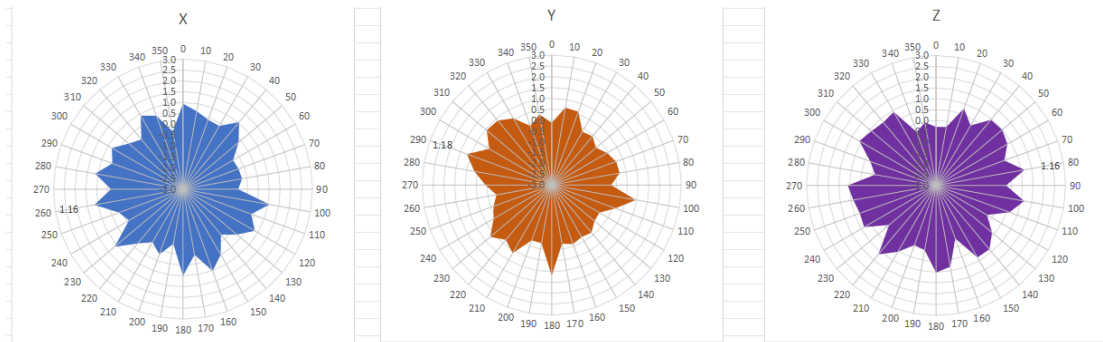
WCDMA/GSM/CDMA test equipment: Agilent 8960

Passive efficiency testing equipment: Agilent Technologies E5071B

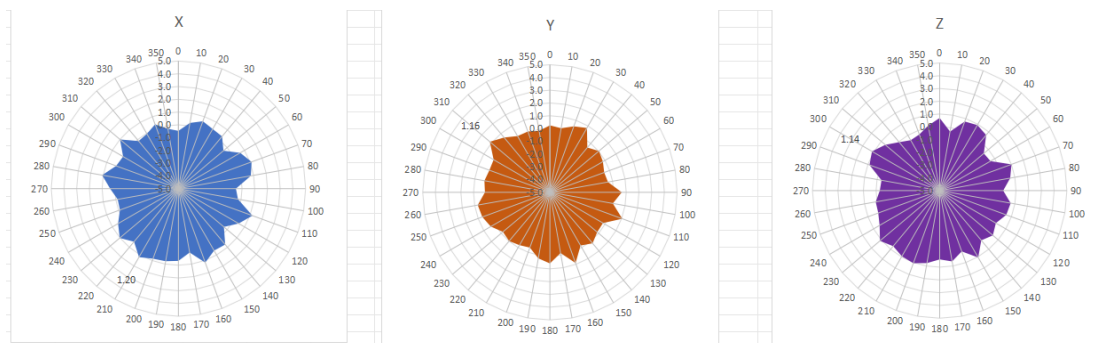


4 . Antenna Radiation Pattern

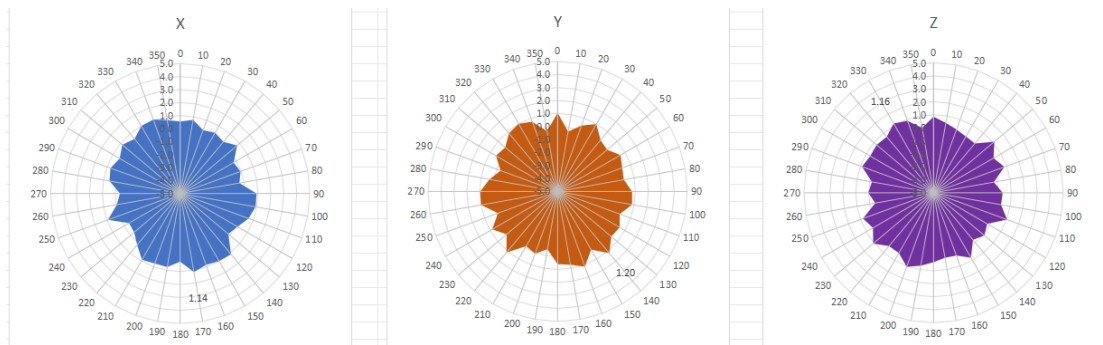
2400MHz



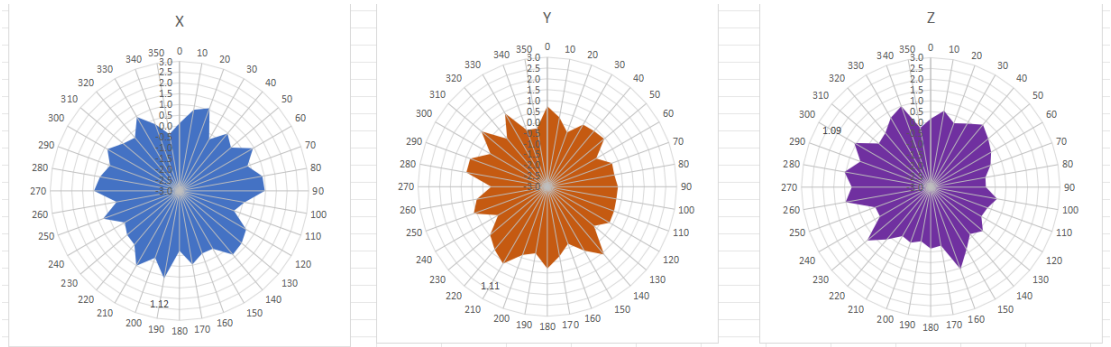
2450MHz



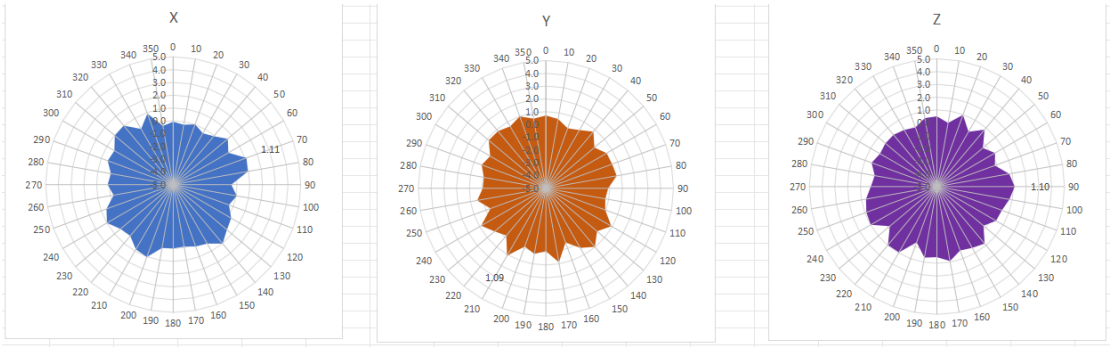
2500MHz



5745MHz



5785MHz



5825MHz

