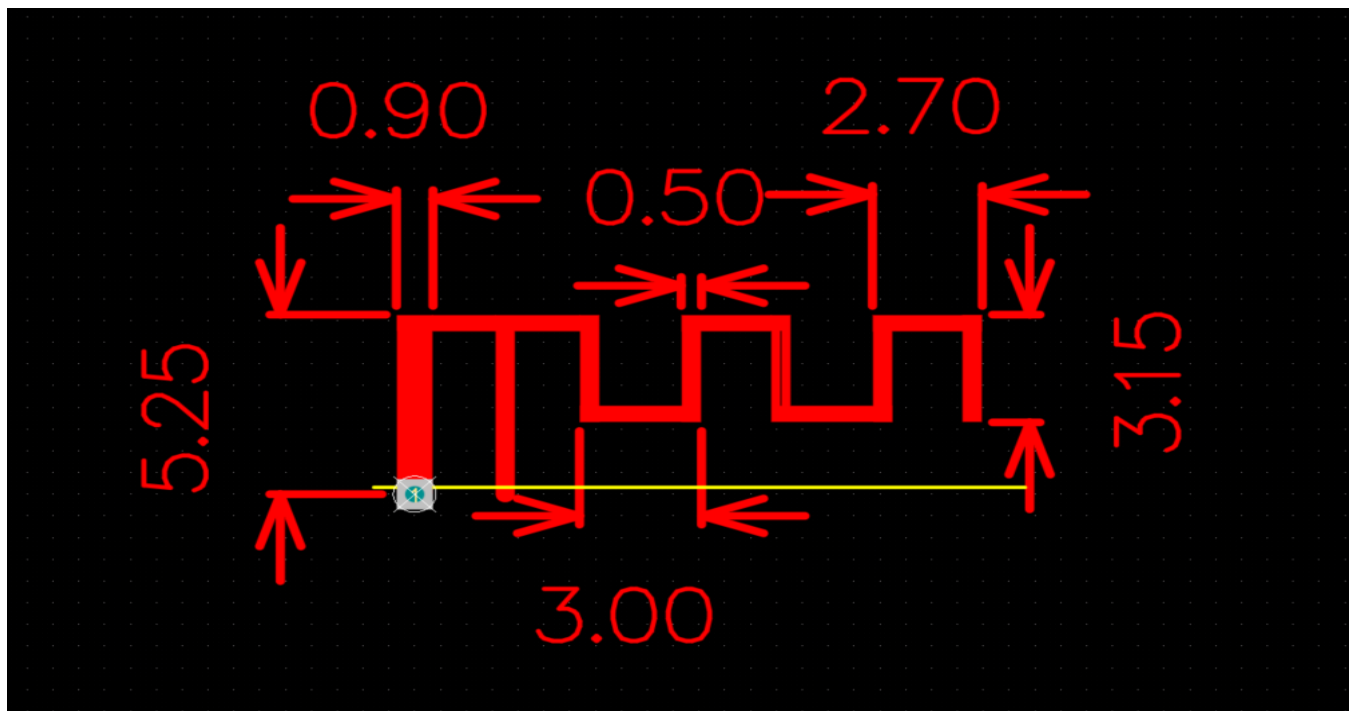


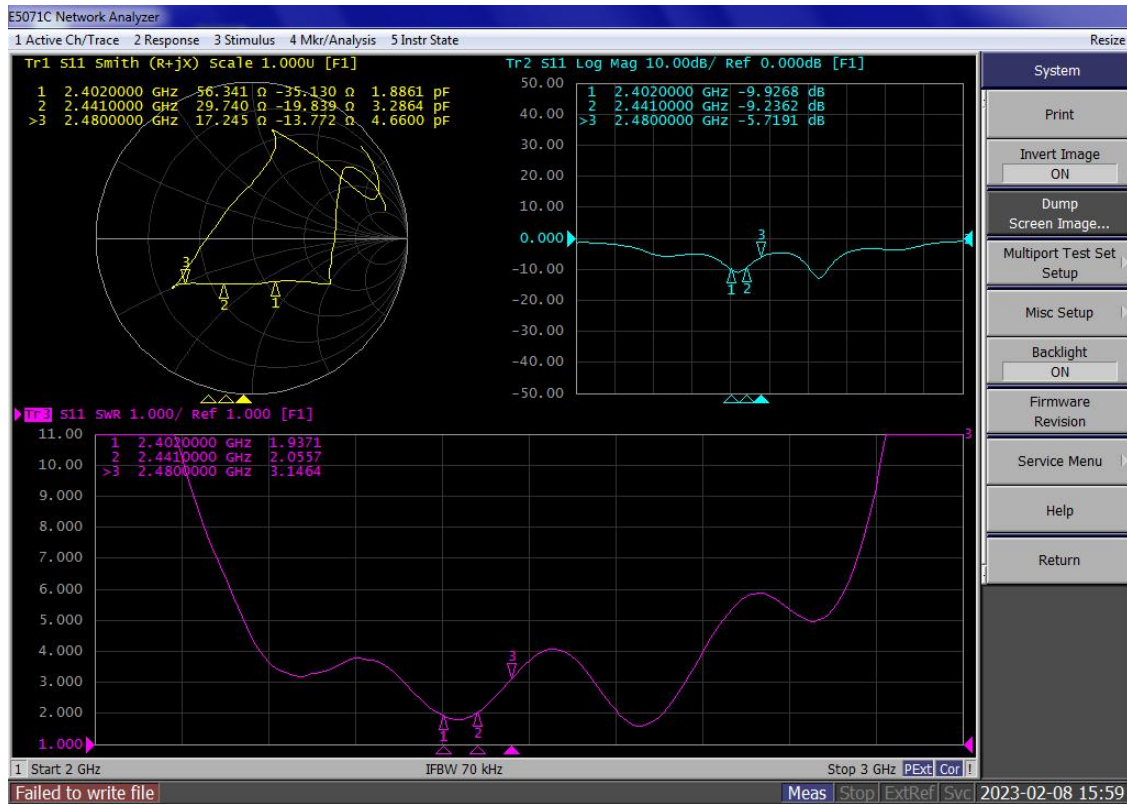
## Antenna data sheet

| SPECIFICATIONS         |   |
|------------------------|---|
| Frequency (MHz)        | 2400-2480   |
| Peak Gain (dBi)        | 2.338   |
| Average Gain (dBi)     | >-5.5   |
| VSWR                   | <3.2  |
| Impedance ( $\Omega$ ) | 50 $\Omega$   |
| Antenna Type           | PCB antenna   |
| Polarization           | Linear  |
| Manufacture            | ZHUHAI JIELI TECHNOLOGY CO.,LTD   |
| Address:               | No.333 Kexing Road, Nanping Science Park,<br>Xiangzhou District, Zhuhai ci ty , China |
| Test equipment         | HWA-TECH  |

### Antenna Photo & Length (mm)



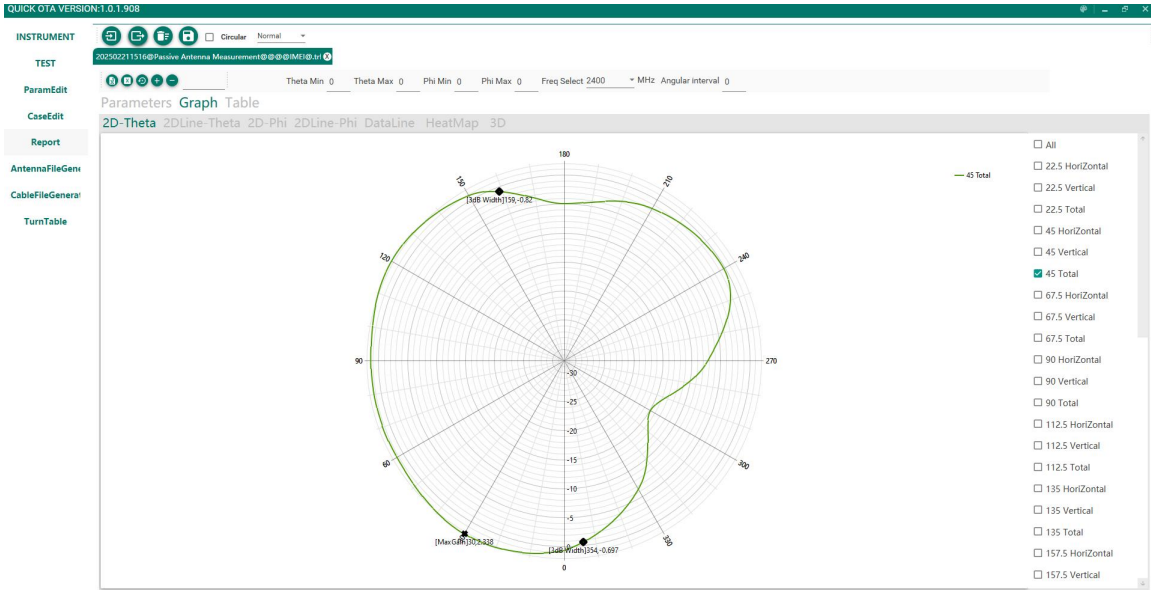
## Antenna passive S-parameters: VSWR, Return Loss, Smith



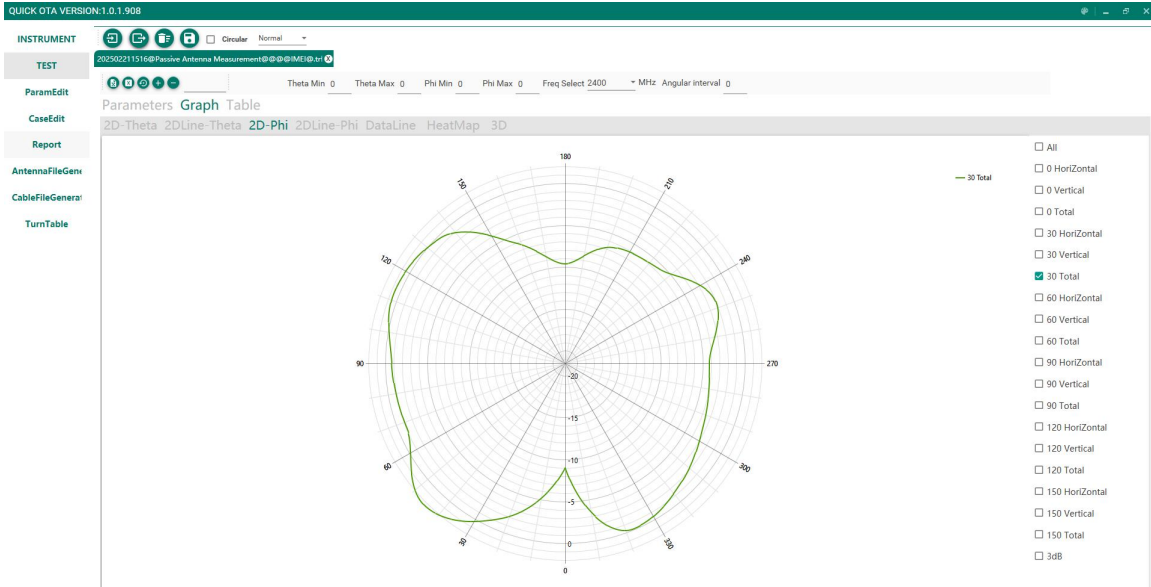
## Antenna efficiency and gain:

| Frequency (MHz) | Gain (dBi) | Efficiency (%) | AverageGain (dBi) | Efficiency (dB) |
|-----------------|------------|----------------|-------------------|-----------------|
| 2400            | 2.338      | 59.39%         | -2.915            | -2.263          |
| 2410            | 1.603      | 49.11%         | -3.883            | -3.088          |
| 2420            | 1.295      | 46.04%         | -4.014            | -3.369          |
| 2430            | 0.388      | 36.89%         | -4.91             | -4.331          |
| 2440            | 0.187      | 34.00%         | -5.276            | -4.685          |
| 2450            | 0.02       | 31.71%         | -5.431            | -4.988          |
| 2460            | 0.507      | 34.88%         | -5.02             | -4.575          |
| 2470            | 0.291      | 31.89%         | -5.323            | -4.963          |
| 2480            | 0.429      | 32.89%         | -5.195            | -4.83           |
| Average         | 0.78       | 39.64%         | -4.66             | -4.12           |
| Peak            | 2.338      | 59.39%         | -2.915            | -2.263          |

# 2400MHz 2D-Theta Pattern



# 2400MHz 2D-Phi Pattern



# 2400MHz 3D-Total Pattern

