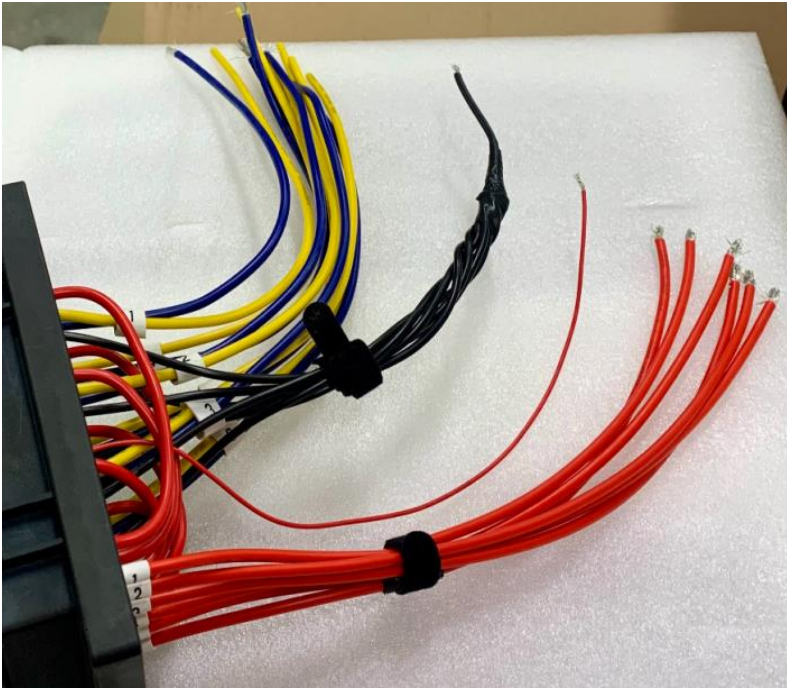


PWR0314 + Wireless Remote Instruction Manual

Package Contents:

- PWR0314 relay box with built-in RF module
- Wireless remote control with built-in RF module
- Relay box mounting accessories
- Relay box wiring accessories

Wiring Setup:



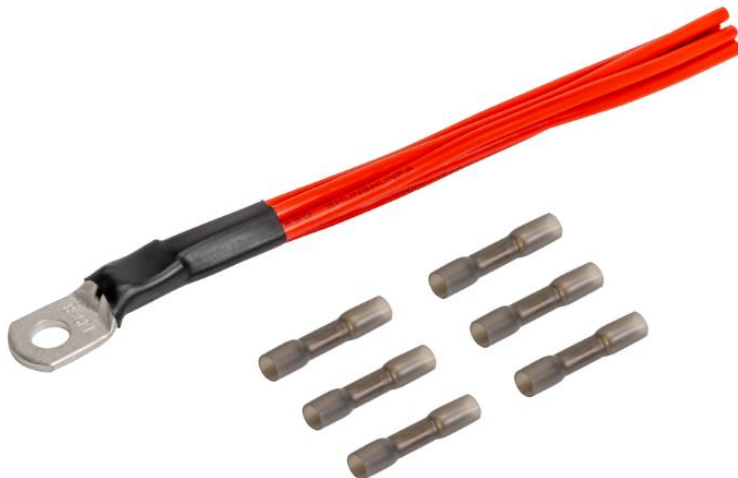
Yellow = "NC"

Blue = "NO"

Black = "-"

Red = "+"

- Notice the 22AWG red wire is to be connected to "+" to supply power to the RF module
- Up to 6 circuits can be set up and each circuit is marked by number label (1~6)
 - o The 12AWG red wire of each circuit is to be connected to "+"
 - o The 12AWG yellow wire of each circuit is connected to Pin 87a on the relay (Normally Closed "NC")
 - o The 12AWG blue wire of each circuit is connected to Pin 87 on the relay (Normally Open "NO")
- Below accessory is available to consolidate the 6 red wires:

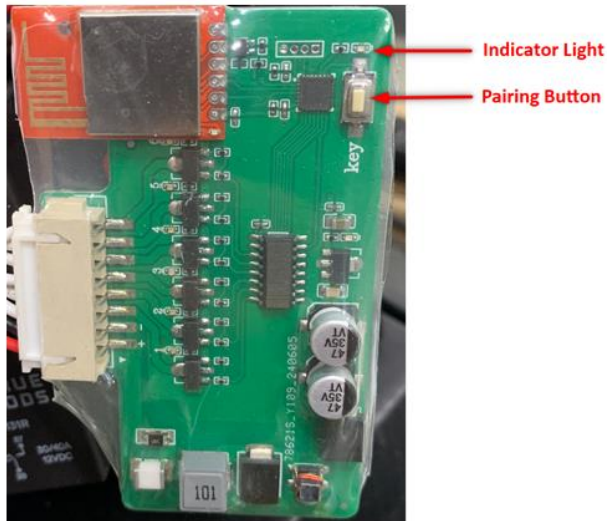


Wireless Remote Setup:

1. Pairing:

- Set the Wireless Remote to OFF
- Locate the pairing button on the RF module inside the relay box, press and hold for 5 seconds until the indicator light to flash ONCE
- Locate the below 2 buttons on the Wireless Remote, press and hold for 5 seconds.

RF module inside the relay box



Wireless Remote



d. If paired successfully:

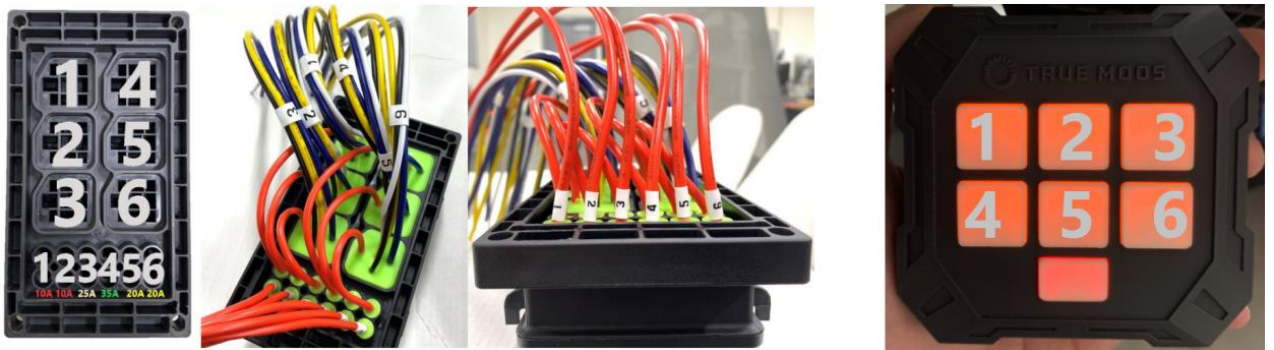
- The Indicator Light on the RF module will stay on for 3 seconds
- The Wireless Remote will “BEEP”

2. Unpair:

- Locate the pairing button on the RF module inside the relay box, press and hold for 5 seconds until the indicator light to flash FIVE TIMES

3. Programing:

- Each button of the Wireless Remote controls 1 circuits



- Each button of the Wireless Remote can be programmed to perform the below function:

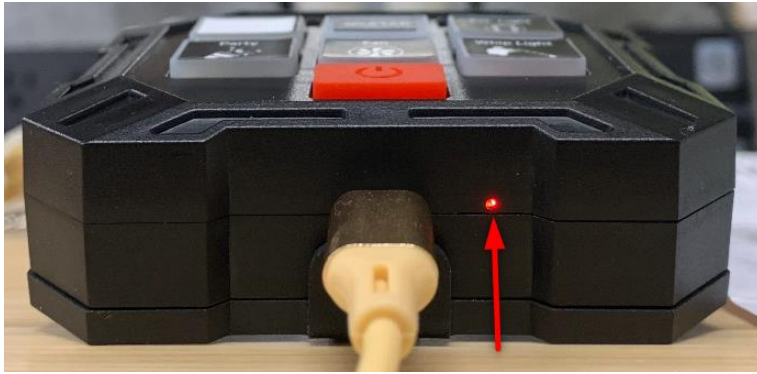
- Toggle (ON/OFF)
- Momentary (Momentary ON/OFF)

- To switch a button between the above 2 functions:

- Set the Wireless Remote to OFF
- Press and hold the to-be-programmed button for 5 seconds
- The programed button will light up and the Wireless Remote will “BEEP”

Battery Status Indicator:

- The Battery Status Indicator is located on the right of the Type-C port.



- Battery Status:
 - o When the Battery Level is less than 10%, the Battery Status Indicator will rapidly flash
 - o When the Wireless Remote is plugged in and charging, the Battery Status Indicator will stay on
 - o When the Wireless Remote is fully charged, the Battery Status Indicator will turn off

To satisfy FCC RF exposure requirements, a separation distance of 20cm or more should be maintained between the antenna of this device and persons during device operation. To ensure compliance, operations at closer than this distance is not recommended.

FCC Statement:

This device complies with part 15 of the FCC Rules. Operation is subject to the following two conditions:

- (1) This device may not cause harmful interference, and
 - (2) this device must accept any interference received, including interference that may cause undesired operation.
- This equipment has been tested and found to comply with the limits for a Class B digital device, pursuant to part 15 of the FCC Rules. These limits are designed to provide reasonable protection against harmful interference in a residential installation. This equipment generates, uses and can radiate radio frequency energy and, if not installed and used in accordance with the instructions, may cause harmful interference to radio communications. However, there is no guarantee that interference will not occur in a particular installation. If this equipment does cause harmful interference to radio or television reception, which can be determined by turning the equipment off and on, the user is encouraged to try to correct the interference by one or more of the following measures:

- Reorient or relocate the receiving antenna.
- Increase the separation between the equipment and receiver.
- Connect the equipment into an outlet on a circuit different from that to which the receiver is connected.
- Consult the dealer or an experienced radio/TV technician for help.

Caution: Any changes or modifications not expressly approved by the party responsible for compliance could void the user's authority to operate the equipment.

This equipment complies with FCC radiation exposure limits set forth for an uncontrolled environment. This transmitter must not be co-located or operating in conjunction with any other antenna or transmitter.