

6" LED Smart Ultra-Thin Canless DownLight



Matter smart plug

Contents

1. Product Description	3
2. Basic Product Functions	3
3. Reset	3
4. Add to Alexa via matter	3
1. Check the environment	3
2. Network Configuration	4
5. Add to Apple via Matter	5
1 Check the environment	5
2 Network configuration	5
QR code pairing interface:	5
Pairing code pairing interface:	5
6. Add to Google via Matter	7
1 Check the environment	7
2 App Distribution Network	7

1.Product Description

Smart Plug are developed according to the Matter standard protocol, and have passed CSA's Matter certification. They can be bound and controlled through ecosystem platforms such as Alexa App/Echo, Apple Home App/Home Pod Mini, Google Home App/Google Nest Hub and Smarththings App/Samsung Smart home Hub.

2.Basic Product Functions

Voice control: The device can be controlled by voice through Alexa, Siri, Google Assistant, or other devices that have passed Matter certification.

App control: Device control can be achieved through Alexa, Apple Home, Google Home, Smarththings or other apps that have already solved the Matter SDK.

Device reset: Press and hold the switch button for 5 seconds to reset, with the indicator light flashing 3 times.

Device pairing: There is a Matter QR code and an 11-digit short code on each device. To bind a device, you can use the matching App to scan the QR code or enter the 11-digit short code for pairing and binding.

3.Reset

Press to turn the socket ON or OFF.

Press and hold(for 3-5 seconds) until the LED flashes to initiate the factory reset the Smart Plug.

4.Add to Alexa via matter

1. Check the environment

1). The version of the Alexa App is greater than or equal to 2.2.491118.0.

2). Having a Matter control hub, any of the following devices can be used:

Device	Version
Echo/Echo Dot	5th Gen: Echo Dot, Echo Dot (Gen 5 with Clock) 4th Gen: Echo, Echo Dot, Echo Dot (Gen 4 with Clock) 3rd Gen: Echo, Echo Dot, Echo Dot (Gen 3 with Clock)
Echo Show	3rd Gen: Echo Show 10, Echo Show 15 2nd Gen: Echo Show 8, Echo Show 5 1st Gen: Echo Show, Echo Show 8

2.Network Configuration

Put the device in pairing mode.

Step 1:Open the Alexa App,and go to the Devices page. click the "+" icon on the homepage,

Step 2: select "Add Device".

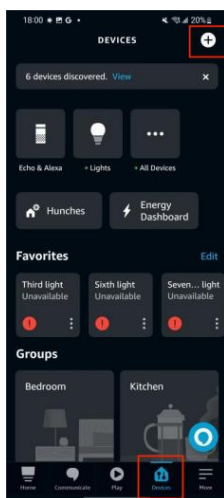
Step 3:select "Other".Choose "Matter"and then tap Next on the following pages.

Step 4:Tap yes on the confirming page.

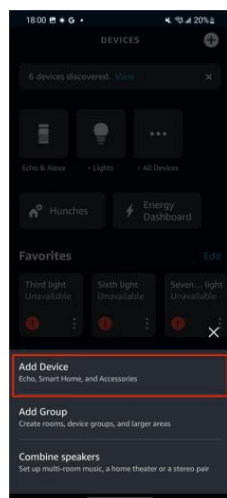
Step 5:you can choose whether to scan the QR code or enter the pairing code for pairing, and then scan the code or enter the pairing code as needed to complete the adding process.

Step 6:Wait for your device to set up.your device to connect to and enter the corresponding Wi-Fi pass word.

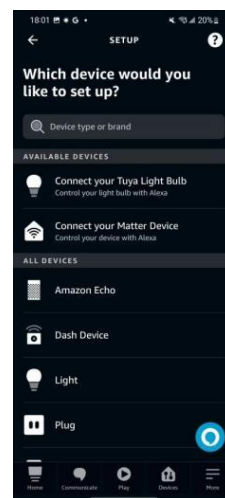
Step 7:Tap Done.Now you can find your device on the Device list and use your voice to control your device.



1



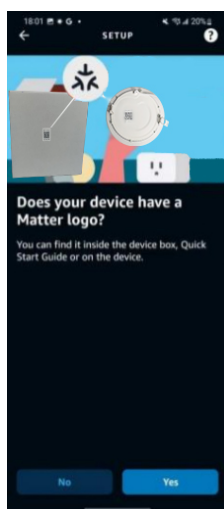
2



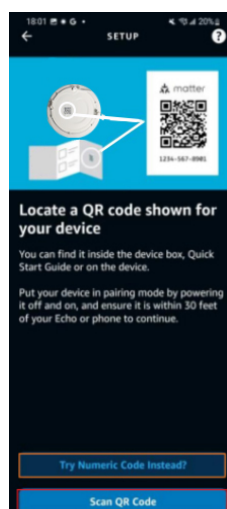
3



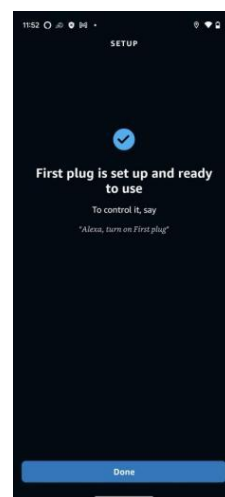
4



5



6



7

5.Add to Apple via Matter

1. Check the environment

- 1). The system version of the Apple phone is greater than or includes version 16.2.
- 2). Having a Matter control hub, any of the following devices can be used: Home Pod, Home Pod mini, Apple TV.
- 3). Join a 2.4G WiFi network, and the WiFi password cannot be blank or a hidden WiFi.

2 Network configuration

Put the device in pairing mode.

Step 1: Launch your Home App. TAP the "+" and tap "Add or Scan Accessory".

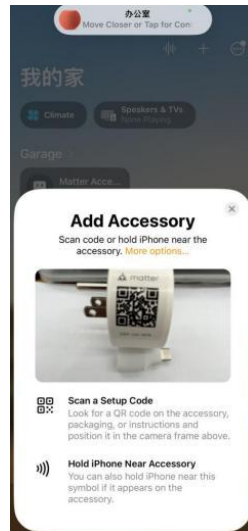
Step 2: scan the setup QR code on your device.

Step 3: Choose a location for your device and give it a name.

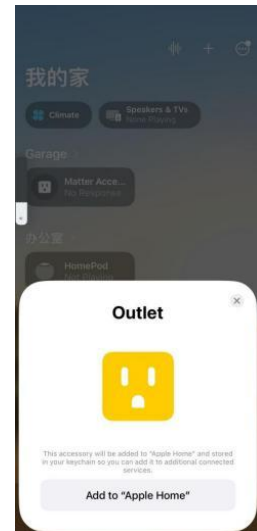
QR code pairing interface:



1



2



3

Pairing code pairing interface:

Step 1: Launch your Home App. TAP the "+" and tap "Add or Scan Accessory".

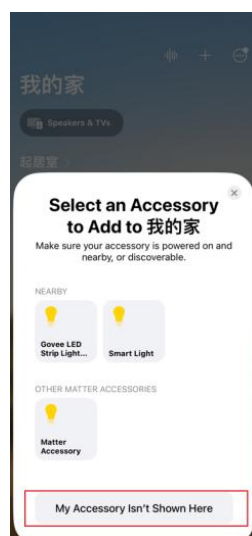
Step 2: Choose "More Options", click "My Accessories" to display it here.

Step 3: Choose "Enter Code" to enter the pairing code pairing interface.

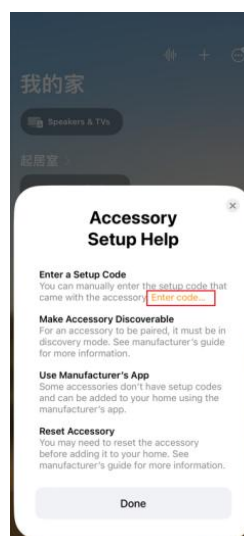
then follow the prompts to add it.



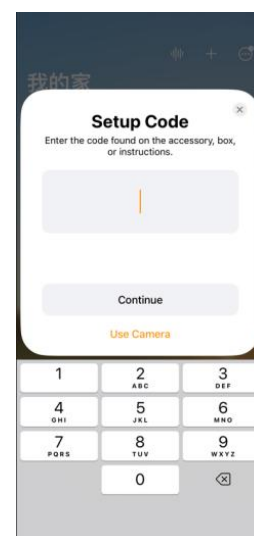
1



2



3



4

6.Add to Google via Matter

1 Check the environment

- 1). Install the Google Home app.
- 2). Have a control hub that supports Matter, and any of the following devices will suffice: Google Nest Audio, Google Nest Hub, Google Nest Hub (2nd gen), Google Nest Hub Max, Google Nest Mini, and Nest WiFi Pro..
- 3). Join a 2.4G WiFi network.

2 App Distribution Network

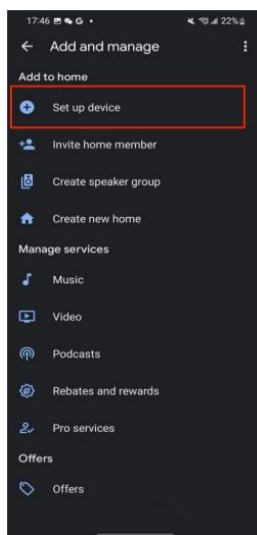
Step 1:Launch your Google Home App and tap "+".

Step 2: Choose"Set up device" and tap "New device" to add a new device

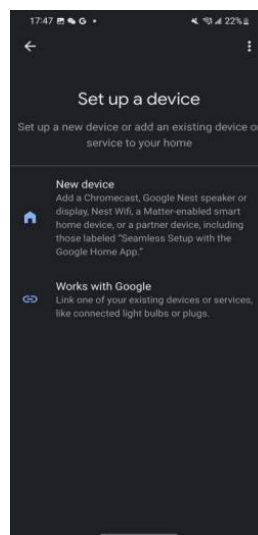
Step 3:Choose Matter and tap"Yes" on the conforming page

Step 4:Scan the setup QR code on your device.If your device comes with out a QR code but a numeric code,you can tap "Set up" without QR code and enter the numeric code.

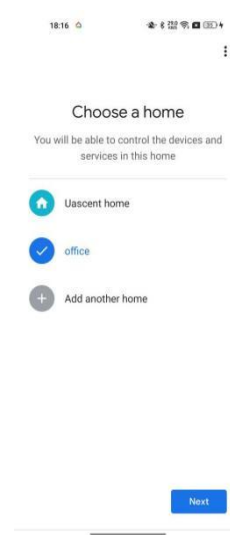
Step 5:Tap Done when the device is connected.



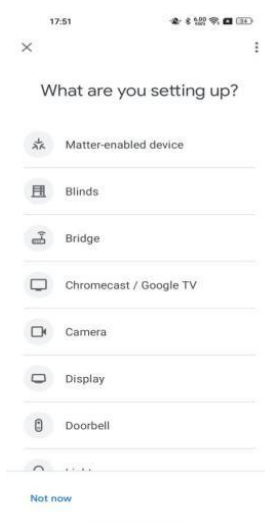
1



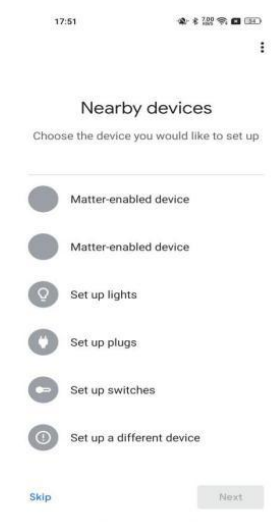
2



3



4



5



6

INSTALLATION INSTRUCTIONS

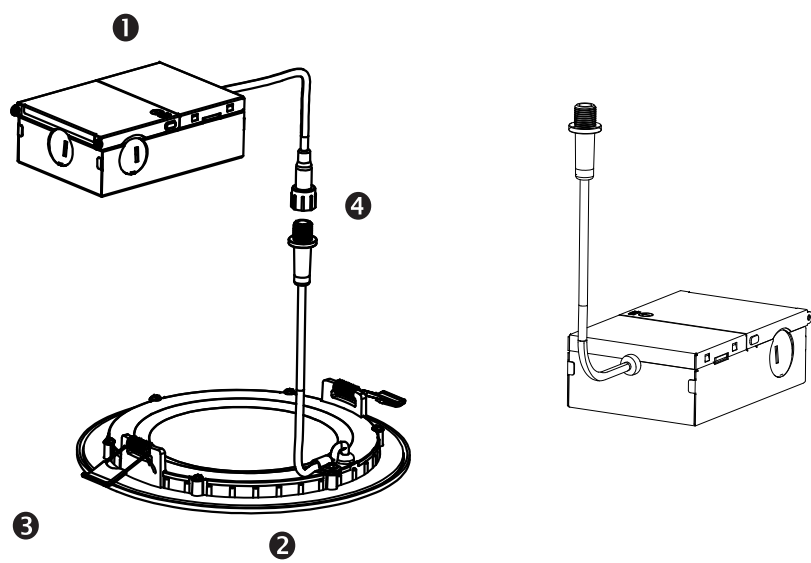
WARNING

MIN 90°C SUPPLY CONDUCTORS
LES FILS D'ALIMENTATION 90°C MIN
CONSULT A QUALIFIED ELECTRICIAN TO ENSURE CORRECT BRANCH CIRCUIT CONDUCTOR
CONSULTEZ UN ELECTRICIEN QUALIFIE POUR VOUS ASSURER QUE LES CONDUCTEURS DE LA DERIVATION SONT ADEQUATS
THIS PRODUCT MUST BE INSTALLED IN ACCORDANCE WITH THE APPLICABLE INSTALLATION CODE BY A PERSON FAMILIAR WITH THE CONSTRUCTION AND OPERATION OF THE PRODUCT AND THE HAZARDS INVOLVED
CE PRODUIT DOIT ÊTRE INSTALLÉ SELON LE CODE D'INSTALLATION PERTINENT, PAR UNE PERSONNE QUI CONNAÎT BIEN LE PRODUIT ET SON FONCTIONNEMENT AINSI QUE LES RISQUES INHÉRENTS

- Turn off electrical power at fuse or circuit breaker box before wiring fixture to the power supply.
- Turn off the power when you perform any maintenance.
- Verify that supply voltage is correct by comparing it with the luminaire label information.
- All wiring connections should be capped with UL approved wire connectors.
- Do not modify this fixture. Any modifications may render the product unsafe and void warranty.

LIMITED WARRANTY

The warranty applies to the product from the original date of purchase for three(3) years against manufacturing defects. The owner must provide a copy of the original proof of purchase. The manufacturer's obligation under this warranty is limited to repairing or replacing the component. It is not related in any way to the cost of the connection, the installation of the replacement parts or cost of transport.



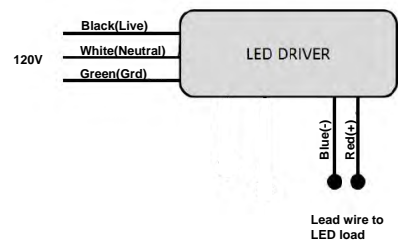
PARTS LIST

- ① Junction Box
- ② Light Panel
- ③ Spring Clips
- ④ Connector

⚠ WARNING

Turn power OFF from electrical panel before installation or maintenance.

General Wiring Diagram

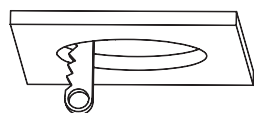


INSTALLATION INSTRUCTIONS

INSTALLATION STEPS

1. Cut hole (refer to Cut-Out Dimensions Table for appropriate size) with a drywall saw. (Figure 1)

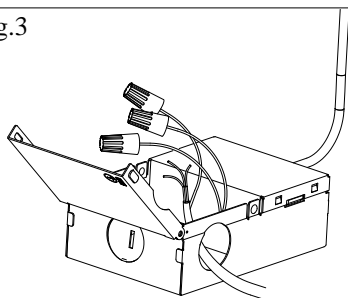
Fig.1



Hole diameter	
6" 14Watts	6.133"(155mm)

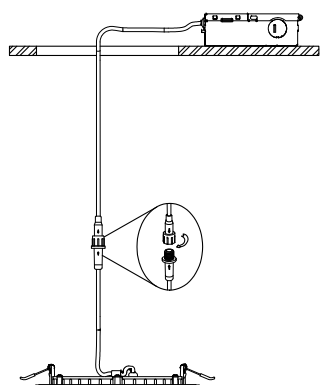
3. Feed the wires from the electrical source through the hole. Use the screw nuts to connect the wires according to the color, then close the junction box. (Figure 3)

Fig.3



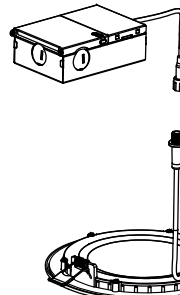
5. Connecting the electrical box to the LED Downlight by twist the two parts of the connector in opposite directions. (Figure 5)

Fig.5



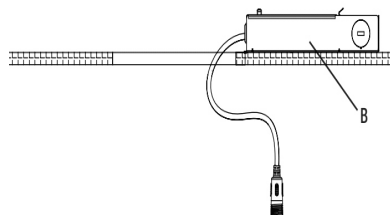
2. Separate the fixture body and junction box, open the junction box and remove one of the knock-out on the side. (Figure 2)

Fig.2



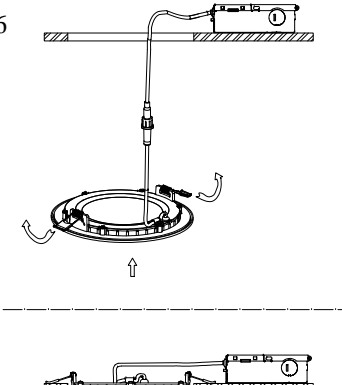
4. Place the electrical box through the cut-out hole in the ceiling and position it where desired. (Figure 4)

Fig.4



6. Flip both clips up and insert into the ceiling, gently push the LED downlight upward until the trim is flush with the ceiling surface. (Figure 6)

Fig.6



Turn on the main power. Installation is complete.

FCC Warning

This device complies with Part 15 of the FCC Rules. Operation is subject to the following two conditions:

(1) This device may not cause harmful interference, and (2) this device must accept any interference received, including interference that may cause undesired operation.

NOTE 1: This equipment has been tested and found to comply with the limits for a Class B digital device, pursuant to part 15 of the FCC Rules. These limits are designed to provide reasonable protection against harmful interference in a residential installation. This equipment generates, uses and can radiate radio frequency energy and, if not installed and used in accordance with the instructions, may cause harmful interference to radio communications. However, there is no guarantee that interference will not occur in a particular installation. If this equipment does cause harmful interference to radio or television reception, which can be determined by turning the equipment off and on, the user is encouraged to try to correct the interference by one or more of the following measures:

- Reorient or relocate the receiving antenna.
- Increase the separation between the equipment and receiver.
- Connect the equipment into an outlet on a circuit different from that to which the receiver is connected.
- Consult the dealer or an experienced radio/TV technician for help.

NOTE 2: Any changes or modifications to this unit not expressly approved by the party responsible for compliance could void the user's authority to operate the equipment.

RF Exposure Statement

To maintain compliance with FCC'S RF Exposure guidelines, This equipment should be installed and operated with minimum 20cm between the radiator and your body. This device and its antenna(s) must not be co-located or operation in conjunction with any other antenna or transmitter.