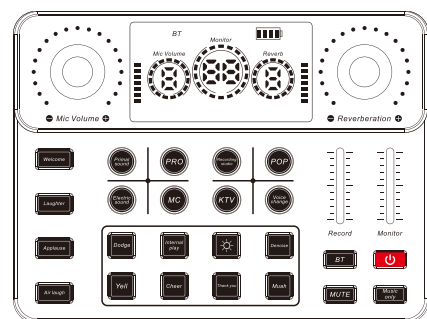


# Live Sound Card User Manual



## I. Product profile

Hello, dear customer. Thank you for buying our products.

Before formal use, please read the manual carefully to ensure the correct use of this product and the proper preservation of the manual for future use. This product is a professional singing live mixer, built-in digital DSP chip: support all live broadcast platform, support mixing switch, simple input mute control, reverberation melodies, text quality shouting wheat, special effect sound, TYPE-C computer connection, perfect to solve the diverse needs of mobile phone and computer live users!

## II. Packaging list host

Sound card x1  
Data line x1  
Live line x2  
Product description product x1

## III. System requirements

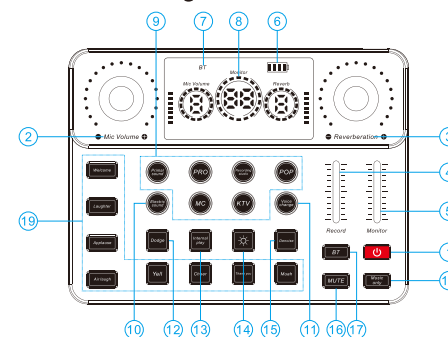
Android, IOS, Windows are fully compatible

## IV. Software support

Sing APP: national Kou, cool I sing, KuGou music, Baidu music, sing bar, sing and so on.

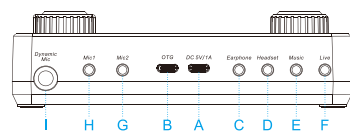
Live broadcast APP: Reflecting guests, Pepper, YY, Douyu, The whole people TV, Kuaishou, TikTok, Tiger teeth and so on.

## V. Schematic diagram of the mainframe



1. Power button: Press and hold the power button to turn the device on or off.
2. Microphone: Adjust the volume of the microphone, and the microphone indicator light will change accordingly.
3. Reverb: Adjust the reverb volume, and the reverb indicator light will change accordingly.
4. Recording: Adjust the recording volume, and the recording sound will change accordingly.
5. Monitoring: Adjust the monitoring volume, and the monitoring sound will change accordingly.
6. Battery indicator light: Displays the battery level, allowing you to clearly know the power usage status of the sound card during use.
7. Bluetooth indicator light: The Bluetooth indicator light flashes when the device is turned on, and it stays on when the Bluetooth connection is successfully established.
8. Volume indicator light: The indicator light will change accordingly when the volume is adjusted.

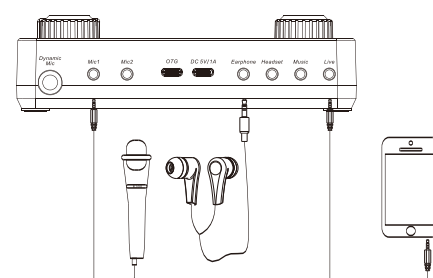
9. Natural Sound: A preset mode. The indicator light flashes to represent that this mode has been switched to.
9. Professional: A preset mode. The indicator light flashes to represent that this mode has been switched to.
9. Recording Studio: A preset mode. The indicator light flashes to represent that this mode has been switched to.
9. Pop: A preset mode. The indicator light flashes to represent that this mode has been switched to.
9. Rap Shouting: A preset mode. The indicator light flashes to represent that this mode has been switched to.
9. KTV: A preset mode. The indicator light flashes to represent that this mode has been switched to.
10. Electro - sound: There are 12 different electro - sound tones, and you can switch them by pressing briefly.
11. Voice Changing: There are 4 different voice - changing modes, and you can switch them by pressing briefly.
12. Duck - in: When enabled, it emphasizes the human voice, and the music volume will decrease accordingly. When disabled, the music and human voice are balanced.
13. Internal Playback: When enabled, the sound played on the computer can be recorded back to the computer. When disabled, the sound played on the computer can only be monitored and cannot be recorded back to the computer.
14. Lighting: Press briefly to adjust the brightness of the lights.
15. Noise Reduction: When the noise reduction function is disabled, external noise is more obvious in the headphones. When enabled, there will be no external noise.
16. Mute: When enabled, you can't hear the sound input from the microphone and headset during monitoring, while the backing track, sound effects, and the sound in the live streaming room are normal.
17. Bluetooth: When enabled, the indicator light flashes. Turn on your device and search for "KYA2" to connect. After a successful connection, the indicator light stays on, and you can use it normally.
18. Sound Effects: There are 8 sound effects, and you can play different sound effects by pressing briefly.



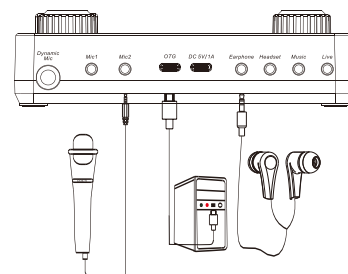
- A. Charging: This interface can be used to charge the sound card.
- B. OTG: This interface can be connected to a mobile phone or a computer via an OTG data cable for live streaming.
- C. Headphones: You can connect headphones with a 3.5mm plug.
- D. Headset: You can connect a headset with a 3.5mm plug.
- E. Backing Track: You can connect a backing track device using a 3.5mm plug audio cable to input backing track music.
- F. Live Streaming: Use a 3.5mm plug audio cable to connect to a mobile phone for live streaming.
- G. Condenser Microphone 2: You can connect a condenser microphone with a 3.5mm plug.
- H. Condenser Microphone 1: You can connect a condenser microphone with a 3.5mm plug.
- I. Dynamic Microphone: You can connect a dynamic microphone with a 6.35mm plug.

## VII. Sconnection diagram

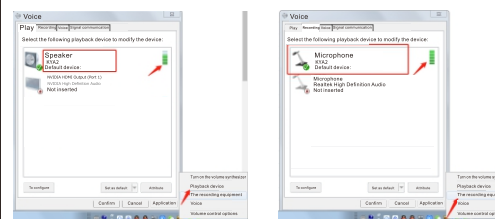
### 1.Computer connection



### 2. Mobile connection



## VIII. Computer accompaniment and computer live debugging diagram

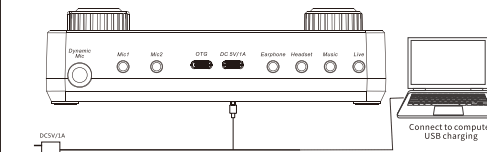


After the sound card is connected to the computer and the computer has recognized the sound card

(1) connect the computer to the host computer with the Micro USB cable, click the small horn in the lower right corner of the computer, and right-click to open the "playback device". If the loudspeaker shows "KYA2" and is the default device, that is, the sound card driver has been installed successfully and has been recognized by the computer.

(2) Computers or other devices that support OTG function and standard USB protocol all support connection with sound card.

## IX. Charging connection



## X. Matters needing attention

1. Since iPhone 7/8 and a small number of Android phones have only charging holes, they need to bring their own headphone conversion lines for use.
2. Pay attention to waterproof, fire prevention, dust prevention, fall prevention, earthquake protection.
3. Please turn off the power supply when it is not in use and store it in a dry and ventilated place.
4. Before charging the sound card, pay attention to the appropriate voltage of the charger (adapter output 5V DC charger).
5. To ensure the best experience, please use the original audio cable and charging line.
6. Charge the sound card regularly to avoid permanent damage to the battery due to overdischarge of the battery.
7. When live broadcast, the volume of live broadcast and accompaniment mobile phone or computer should be adjusted to the right place, in case there is no sound between live broadcast or recording, do not put live broadcast mobile phone and live broadcast phone in the same area to prevent sound recording back.
8. The sound card is a built-in lithium battery, the battery composition due to the surrounding temperature changes, please do not use in an environment where the temperature is too low and too high, otherwise it will cause permanent damage to the battery.
9. No unauthorized disassembly and modification shall be carried out, and any functional and safety problems arising therefrom shall be borne by the user.
10. All mobile phones have done it in the singing process: after the section (turn off the ear back), the recorded sound must be adjusted back to the appropriate size when the recording is completed, otherwise the recorded sound will not be heard during the tuning process.

## XI. Analysis of relevant knowledge

1. The basic functions of the sound card are two, one playback (the sound heard by the local playback); the second is the recording (the process of storing or transmitting the audio signal of the recording channel locally or on the network through recording, chat, or singing software).
2. When singing, the size of the voice should be adjusted slightly larger than that of the accompaniment.
3. In the reverberation effect, the original sound is called dry sound (DRY) reverberation effect is called wet sound (WET) should use the appropriate reverberation effect when singing, so that the dry sound of the song is clear and the wet sound is properly dyed.
4. Different microphone sound characteristics are quite different:
  - (1) Capacitance meter wind generally has a high degree of balance, fidelity, details are rich, listening feeling is more natural, it is not suitable to put the microphone as far as the mouth, can be placed near the front of the chin, the well to maintain a distance of 5-10 cm, in order to obtain better human sound frequency response and sound pressure, appropriate distance can make the sound more natural and clear, it is best to use with high sealing listening headphones.
  - (2) the moving ring microphone is more prominent in middle and low frequency and thick sound, but the sensitivity is not high and the details are lacking.

**FCC Caution:**

This device complies with part 15 of the FCC Rules.

Operation is subject to the following two conditions: (1) This device may not cause harmful interference, and (2) this device must accept any interference received, including interference that may cause undesired operation.

Any changes or modifications not expressly approved by the party responsible for compliance could void the user's authority to operate the equipment.

NOTE: This equipment has been tested and found to comply with the limits for a Class B digital device, pursuant to Part 15 of the FCC Rules. These limits are designed to provide reasonable protection against harmful interference in a residential installation. This equipment generates, uses and can radiate radio frequency energy and, if not installed and used in accordance with the instructions, may cause harmful interference to radio communications. However, there is no guarantee that interference will not occur in a particular installation. If this equipment does cause harmful interference to radio or television reception, which can be determined by turning the equipment off and on, the user is encouraged to try to correct the interference by one or more of the following measures:

- Reorient or relocate the receiving antenna.

- Increase the separation between the equipment and receiver.

- Connect the equipment into an outlet on a circuit different

from that to which the receiver is connected.

- Consult the dealer or an experienced radio/TV technician for help.

The device has been evaluated to meet general RF exposure requirement. The device can be used in portable exposure condition without restriction.