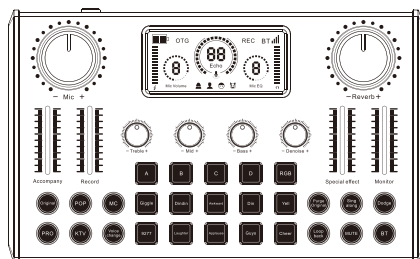


# Live Sound Card User Manual



## I. Product profile

Hello, dear customer. Thank you for buying our products.

Before formal use, please read the manual carefully to ensure the correct use of this product and the proper preservation of the manual for future use. This product is a professional singing live mixer, built-in digital DSP chip: support all live broadcast platform, support mixing switch, simple input mute control, reverberation melodies, text quality shouting wheat, special effect sound, TYPE-C computer connection, perfect to solve the diverse needs of mobile phone and computer live users!

## II. Packaging list host

Sound card x1  
Data line x1  
Live line x2  
Product description product x1

## III. System requirements

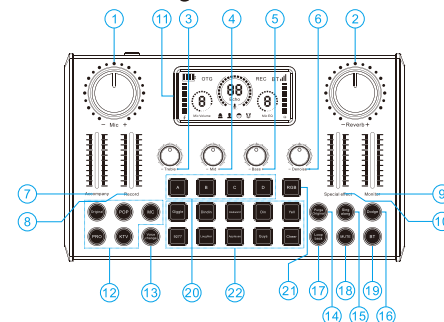
Android, IOS, Windows are fully compatible

## IV. Software support

Sing APP: national Kou, cool I sing, KuGou music, Baidu music, sing bar, sing and so on.

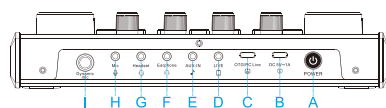
Live broadcast APP: Reflecting guests, Pepper, YY, Douyu, The whole people TV, Kuaishou, TikTok, Tiger teeth and so on.

## V. Schematic diagram of the mainframe



- 1.Mic:Adjust the volume of the microphone, and the indicator light of the microphone will change accordingly;
- 2.Reverb:Adjust the volume of the reverberation, and the reverberation sound will change accordingly;
3. Treble : Adjust the treble of the microphone, turn left to reduce the treble, turn right to increase the treble.
4. Mid:To adjust the midrange of the microphone, turn the midrange to the left to reduce the midrange, and rotate it to the right to strengthen the midrange.
- 5.Bass:Adjust the bass of the microphone, turn left to reduce the bass, turn right to increase the bass.
- 6.Denoise:Adjust the noise reduction level to suit different usage environments.
- 7.Accompany:Adjust the accompaniment volume, the accompaniment sound will change accordingly.
- 8.Record: Adjust the recording volume, the recording sound will change accordingly.
- 9.Monitor:Adjust the monitoring volume, the monitoring sound will change accordingly.
- 10.special effects:Adjust the volume of the special effect, and the sound of the special effect will change accordingly;

- 11.Display screen:It can display the various values of the current tuning of the sound card in detail, and can adjust the required values more accurately.
- 12.Original:Scene mode, the indicator light indicates that it has been switched to this mode.
- 12.popular : Scene mode, the indicator light indicates that it has been switched to this mode.
- 12.MC:Scene mode, the indicator light indicates that it has been switched to this mode.
- 12.Professional:Scene mode, the indicator light indicates that it has been switched to this mode
- 12.Karaoke : Scene mode, the indicator light indicates that it has been switched to this mode.
- 13.Voice Change: There are 4 voice changing modes together.
- 14.Purge Original:When turned on, the vocals in the computer or external accompaniment and Bluetooth accompaniment will be eliminated, and when turned off, the vocals in the accompaniment will be retained; (requires a stereo source)
- 15.sing along:When singing, the original accompaniment is eliminated, and when not singing, the original accompaniment is played normally.
- 16.Dodge:When turned on, the vocals will be highlighted, and the music will become smaller. When turned off, the music and the vocals are balanced.
- 17.Loopback:When turned on, the sound played by the computer can be recorded back to the computer. When the computer is turned off, the sound played by the computer can only be monitored and cannot be recorded back to the computer.
- 18.MUTE:Turn off all sounds on the sound card.
- 19.BT:When turned on, the indicator light flashes, turn on the device and search for "F668" to connect, after the connection is successful, the indicator light is always on, and it can be used normally.
- 20.Custom sound effects:Press and hold to record or delete sound effects. Press and hold to play sound effects.
- 21.RGB:Tap to switch between different RGB lighting effects.
- 22.Special effect sound : Contains 10 special effects sounds, short press to play different sound effects.



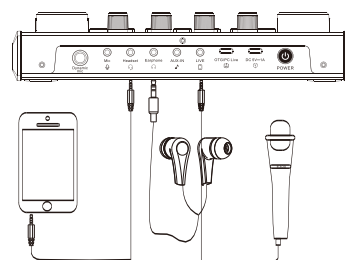
- A. Power button:Press and hold the power button for 3 seconds to turn on/off
- B. DC 5V/1A: This interface can charge the sound card.
- C. OTG/ PCLive: For live computer broadcast.
- D. LIVE : Connect to mobile phone live broadcast, recording, singing.
- E. AUX-IN: The accompaniment line connected to the 3.5mm plug.
- F. Earphone: Headphones connected to 3.5mm plugs.
- G. Headset: The headset connected to the 3.5mm plug.
- H. Mic: capacitor wheat connected to 3.5mm plug.
- I. Dynamic mic: a dynamic microphone connected to a 6.35mm plug.

## VI. Specification parameters

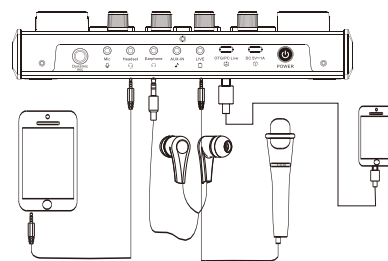
Specification parameter			
Channel system	Output sampling rate	Sampling bits	Use scene
Double channel	44.1KHZ	16bit	Home Outdoor
Weight	Knob	Button	Size
560g	6 piece	28 piece	227*139*46MM
Indicator	Push button	USB and live interface	Audio interface
106 piece	4 piece	Digital communication / charge / live accompaniment	Accompaniment, musical instrument, earphone, headset, condenser microphone
Main battery specification			
Capacity	Electricity consumption	Charging voltage	Charging current
2600mAh	220mA	DC 5V	1A

## VII. schematic diagram of the connection process

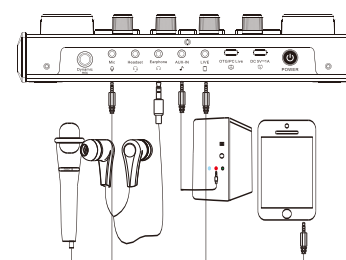
### 1. Mobile phone recording, live broadcast



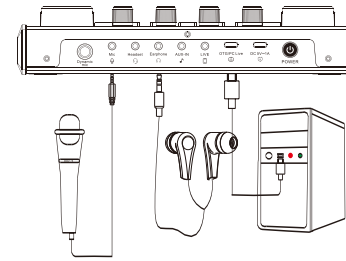
### 2. Dual mobile phone live broadcast



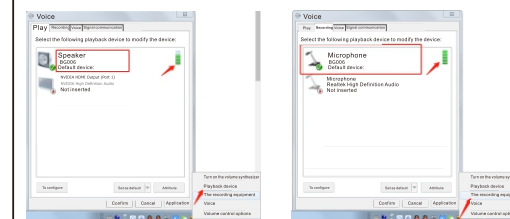
### 3. Mobile phone live computer accompaniment



### 4. Computer live broadcast



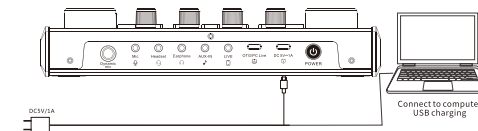
## VIII. Computer accompaniment and computer live debugging diagram



After the sound card is connected to the computer and the computer has recognized the sound card

- (1) connect the computer to the host computer with the Micro USB cable, click the small horn in the lower right corner of the computer, and right-click to open the "playback device". If the loudspeaker shows "BG006" and is the default device, that is, the sound card driver has been installed successfully and has been recognized by the computer.
- (2) Computers or other devices that support OTG function and standard USB protocol all support connection with sound card.

## IX. Charging connection



This device complies with part 15 of the FCC Rules. Operation is subject to the following two conditions: (1) this device may not cause harmful interference, and (2) this device must accept any interference received, including interference that may cause undesired operation.

Any changes or modifications not expressly approved by the party responsible for compliance could void the user's authority to operate the equipment.

NOTE: This equipment has been tested and found to comply with the limits for a Class B digital device, pursuant to Part 15 of the FCC Rules. These limits are designed to provide reasonable protection against harmful interference in a residential installation. This equipment generates, uses and can radiate radio frequency energy and, if not installed and used in accordance with the instructions, may cause harmful interference to radio communications. However, there is no guarantee that interference will not occur in a particular installation.

If this equipment does cause harmful interference to radio or television reception,

which can be determined by turning the equipment off and on, the user is encouraged to try to correct the interference by one or more of the following measures:

- Reorient or relocate the receiving antenna.

- Increase the separation between the equipment and receiver.

- Connect the equipment into an outlet on a circuit different from that to which the receiver is connected.

- Consult the dealer or an experienced radio/TV technician for help.

The device has been evaluated to meet general RF exposure requirement. The device can be used in portable exposure condition without restriction.