

尺寸：200*120mm

REGISTER BOOSTER FAN

USER MANUAL



READ AND SAVE THESE INSTRUCTIONS

★ Read This First

How it works

- The booster fan turns on and off based on the temperature of the air in the duct.
- When the temperature in the duct rises to the Winter mode setting or drops below the Summer mode setting, the device turns on and runs.

How to set

- Summer mode : Detect the real-time temperature when it is on, and set your cooling trigger with a certain temperature data(the data should be below the room temperature)(p.4).
- Winter mode: Detect the real-time temperature when your heater is on, and set your heating trigger with a certain temperature data(the data should be above the room temperature)(p.4) .

Not a thermostat

- Duct airflow temperature displays in the LCD screen, instead of the temperature in the room.
- Set the temperature data(instead of the temperature to be reached) at which the fan starts to work.

Notes

- Disabled mode: disable heating mode in summer, cooling mode in winter.
- The default settings is recommend, as it will probably work for most cases.
- Once you've got the unit running properly, forget it until you seasons changes. Adjust the fan speed and mode via the buttons or remote control if necessary.
- If both cool and heat made are active, make sure the heating setpoint is above the cooling setpoint.
- The fan is designed to boost airflow from the register, it neither heats nor cools the air.

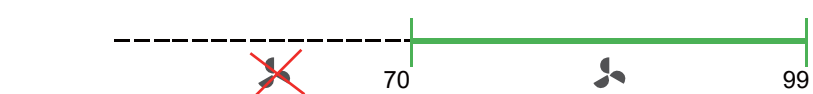
Summer mode

Set the trigger temperature data: When the temperature in the pipe is detected lower than the set temperature, the fan starts to work.



Winter mode

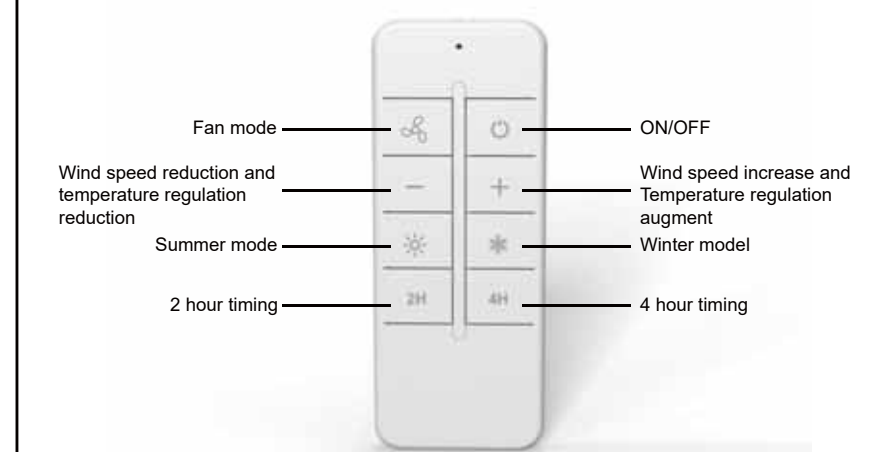
Set the trigger temperature data: When the temperature in the pipe is higher than the set temperature, the fan starts to work.



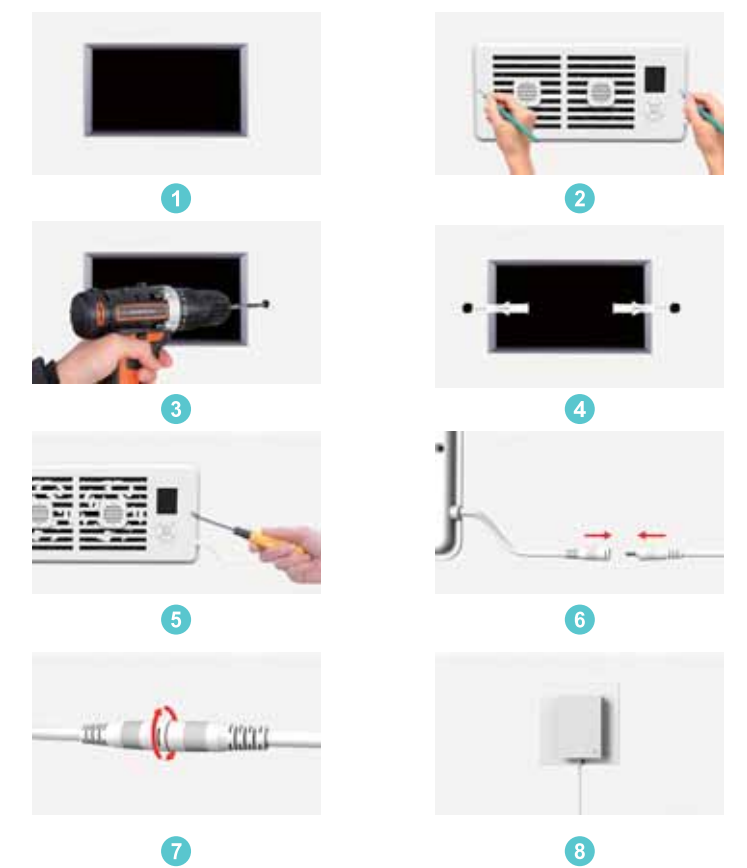
Product Introduction



Remote control introduction



Installation



Function

1. Under fan mode, the wind speed is adjustable from 1-10 grades.
2. Under summer mode, 55-80 adjustable. When the temperature is lower than the set temperature, the fan starts to work. And when the temperature is higher than the set temperature, the fan stops working.
3. Under winter mode, 70-99 adjustable. When the temperature is higher than the set temperature, the fan starts to work. And when the temperature is lower than the set temperature, the fan stops working.
4. When there is no further operation, the screen will automatically extinguish within 1 minute. Press any button to wake up the screen.

How to set

Summer mode

Summer mode: Detect the real-time temperature when your heater is on, and set your heating trigger with a certain temperature data(the data should be below the room temperature) Press button to switch to summer mode, and the icon appears in the display screen, which means the setting is finishing. Press the button to set trigger temperature. When the temperature inside the pipe is lower than the set temperature, the fan starts to work.Default 4-speed:Wind speed can not be adjusted.

Remote control setting: Click button, set to summer mode, the display screen shows the icon , which means the setting finishing. Press buttons to set the trigger temperature. When the temperature is lower than the set temperature, the fan starts to work.Default 4-speed:Wind speed can not be adjusted.

(Notes: When switching the mode, please make sure that the product has been installed, and powered on.)

Winter mode

Winter mode: Detect the real-time temperature when it is on, and set your cooling trigger with a certain temperature data(the data should be below the room temperature). Press button to set winter mode, and the icon appears on the display screen, which means the setting is finishing. Press the button to adjust the setting trigger temperature. When the temperature in the pipe is lower than the set temperature, the fan starts to work.Default 4-speed:Wind speed can not be adjusted.

Remote control setting: Click button, set to winter mode, the display screen shows the icon , which means the setting finishing. Set the trigger temperature, with buttons. When the temperature is higher than the set temperature, the fan starts to work.Default 4-speed:Wind speed can not be adjusted.

(Notes: When switching the mode, please make sure that the product has been installed, and powered on.)

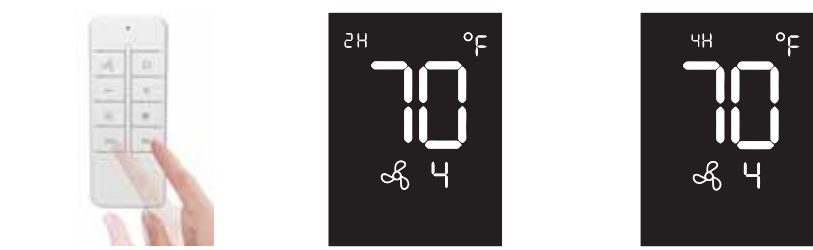
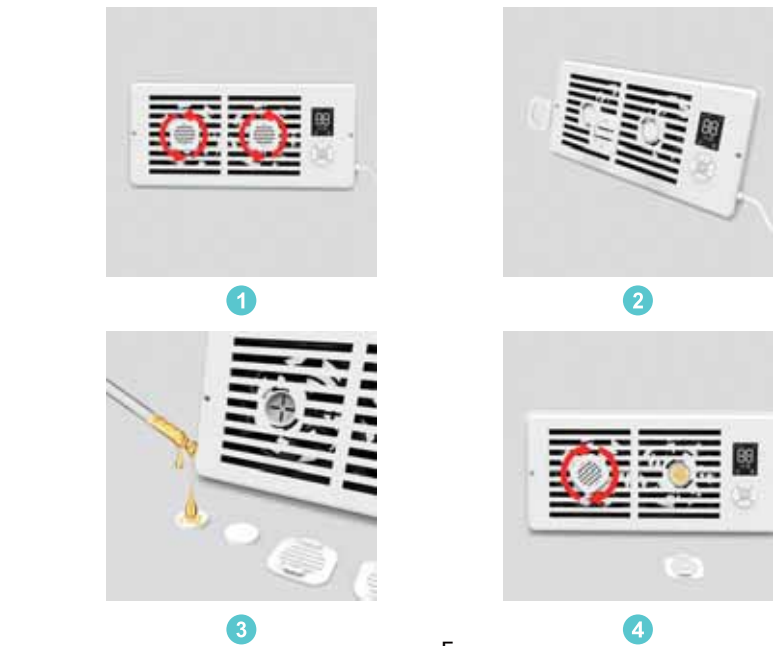
Fan mode

Fan mode: Press button to set the fan mode.The fan works normally and will not be controlled by temperature. The wind speed can be adjusted by pressing the button.

Remote control: Press to set fan mode.The fan works normally will not be controlled by temperature.The wind speed can be adjusted by pressing the button.

(Notes: When switching the mode, please make sure that the product has been installed, and powered on.)

How to use the aromatherapy function



Timing setting: Press the remote control for 2 hours /4 hours timing function. The fan will automatically shut down when it reaches the working time,when the timing is set.

When there is no further operation, the screen will automatically extinguish within 1 minute. Press any button to wake up the screen.

Product Specifications

| | |
|---------------------|----------|
| Wattage | 9w |
| Voltage | 12v |
| Material | ABS |
| Weight | 737g |
| Ambient temperature | 13-113°F |
| Lifetime | 67000h |

FC MADE IN CHINA

FCC Warning

This device complies with part 15 of the FCC rules. Operation is subject to the following two conditions: (1) this device may not cause harmful interference, and (2) this device must accept any interference received, including interference that may cause undesired operation.

Changes or modifications not expressly approved by the party responsible for compliance could void the user's authority to operate the equipment.

NOTE: This equipment has been tested and found to comply with the limits for a Class B digital device, pursuant to part 15 of the FCC Rules. These limits are designed to provide reasonable protection against harmful interference in a residential installation. This equipment generates uses and can radiate radio frequency energy and, if not installed and used in accordance with the instructions, may cause harmful interference to radio communications. However, there is no guarantee that interference will not occur in a particular installation. If this equipment does cause harmful interference to radio or television reception, which can be determined by turning the equipment off and on, the user is encouraged to try to correct the interference by one or more of the following measures:

-Reorient or relocate the receiving antenna.

- Increase the separation between the equipment and receiver.

- Connect the equipment into an outlet on a circuit different from that to which the receiver is connected.

- Consult the dealer or an experienced radio/TV technician for help.

Radiation Exposure Statement

The device has been evaluated to meet general RF exposure requirement. The device can be used in portable exposure condition without restriction.