

Instructions of Smart Fan Light



CAUTIONS:

1. This ceiling fans must be installed by a qualified licensed electrician.
2. Please read the instruction before installation.



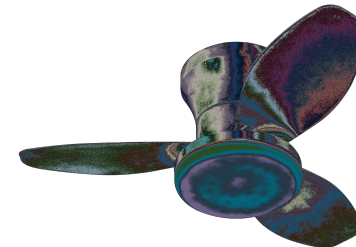
Ceiling fan with lights style display



White + Light wood



White



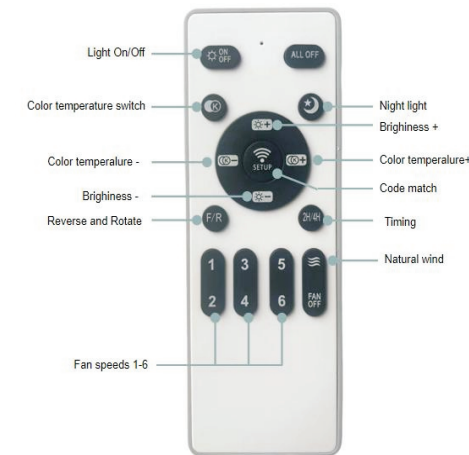
Black



Black + Dark wood



Dimming + Variable frequency fan light remote control manual



1. Code alignment: Turn on the power and press the code alignment and shake the head key immediately within 3 seconds after hearing a “beep” sound. The receiver will emit a “beep” sound and the code alignment is successful. If the code alignment fails, turn off the power and repeat the preceding operations for one minute.

2. When the remote control cannot be effectively controlled: please check the battery, and take out the battery in time if it is not used for a long time.

3. After the battery is replaced, press the On/Off key to turn on the remote control.

4. The air guide wheel must be effectively controlled after the fan is opened.

5. The battery supplied by our factory is a test battery, please replace it in time.

Accessories in the package for US customers



DC motor + Light Kit



Fan blade*3



Remote control*1



User manual*1



Spare screws*1



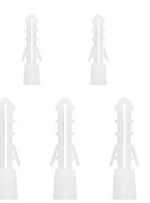
Blind nuts*3



Flat head screws*5



Pointed screw*7



Expansion screw*6

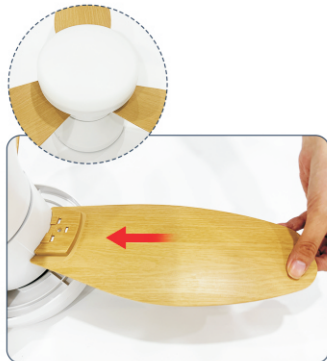


Safety hook*1

Please check whether the accessories are complete, if there is anything missing, please contact us.

Installation

1



Push the fan blade inwards.

2



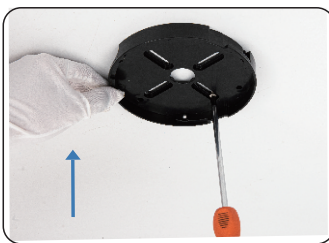
Install the screws to secure.

3



Carefully rotate and remove the fan light base from the light body.

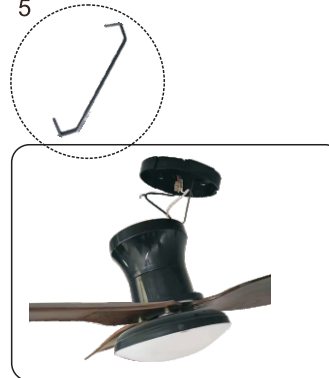
4



Tighten the motor cover to the ceiling with screws

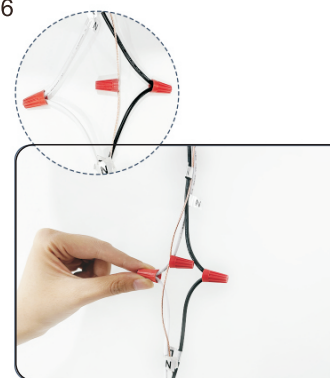
Installation

5



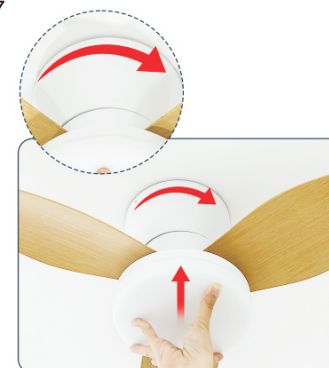
Install the safety hook on the mounting bracket.

6



Connect the AC cables L/N/E.

7

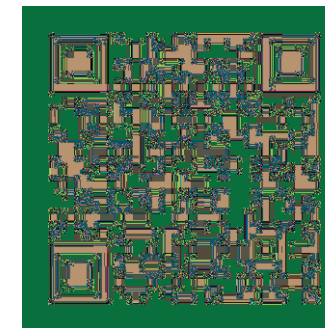


Rotate the fan light base clockwise and install onto base plate.

8



Tighten the last screw and the installation is complete.



Installation video

FCC Statement

This device complies with part 15 of the FCC Rules. Operation is subject to the following two conditions: (1) This device may not cause harmful interference, and (2) this device must accept any interference received, including interference that may cause undesired operation.

This equipment has been tested and found to comply with the limits for a Class B digital device, pursuant to part 15 of the FCC Rules. These limits are designed to provide reasonable protection against harmful interference in a residential installation. This equipment generates, uses and can radiate radio frequency energy and, if not installed and used in accordance with the instructions, may cause harmful interference to radio communications. However, there is no guarantee that interference will not occur in a particular installation. If this equipment does cause harmful interference to radio or television reception, which can be determined by turning the equipment off and on, the user is encouraged to try to correct the interference by one or more of the following measures:

- Reorient or relocate the receiving antenna.
- Increase the separation between the equipment and receiver.
- Connect the equipment into an outlet on a circuit different from that to which the receiver is connected.
- Consult the dealer or an experienced radio/TV technician for help.

Caution: Any changes or modifications to this device not explicitly approved by manufacturer could void your authority to operate this equipment.

RF Exposure Information

The device has been evaluated to meet general RF exposure requirement. The device can be used in portable exposure condition without restriction.