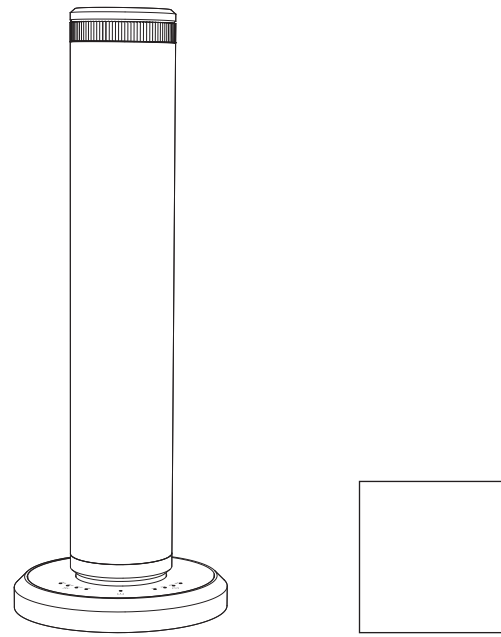


User Manual



Model:AE30

Scan QR Code for User Manual

This waterless nano aroma diffuser utilizes high-frequency vibration to atomize essential oils into 2-4µm active micro-particles without heat-induced degradation. Designed for direct plug-in power via AC outlet (adapter included), it efficiently covers 100-800 sq ft (approx. 10-70m²) spaces. Features dual operation modes, App based smart control & touch-sensitive buttons, with a whisper-quiet design optimized for multi-scenario use in homes, offices, and beyond.

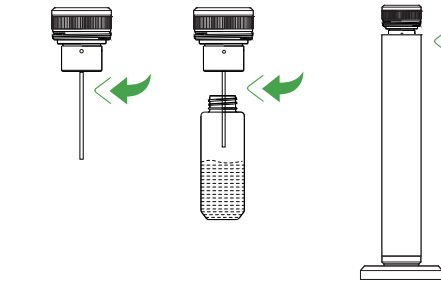
Specifications	
Model	AE30 (Cylindrical Design)
Material	Aluminum + Reinforced Plastic
Tank Capacity	110mL
Misting Rate	1.6mL/h±5% (3 adjustable levels)
Compatibility Oils	Essential Oils with 12-28CP Viscosity (25°C)
Smart Features	Dual Control (APP & Touch Buttons)
Coverage	100-800 sq ft (10-70m ²)
Noise	<40dB Ultra-Quiet
Bluetooth	1.7W Low-Energy
Weight	1.29kg
Dimensions	124×391mm
Charging	5-6hrs via 5V/2A Type-C

▲ Note: Essential oils are liposoluble and may degrade plastic, rubber, or coated surfaces. Place diffuser on non-reactive substrates (stainless steel/glass) or within a spill-resistant tray.

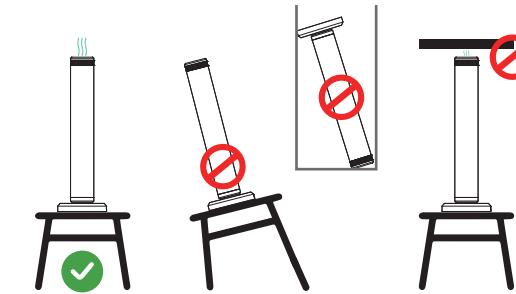
Unboxing + Use

Disassemble/
Assemble

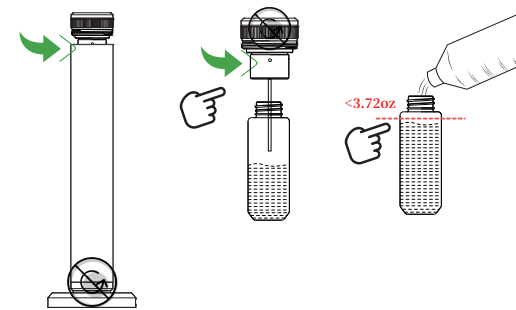
II Setup Guide



Filling & Sealing
Unscrew cap, fill with oil up to MAX line (≤110mL). Align filled oil bottle with threads, rotate clockwise to secure.
Confirm all components are fully rotated and sealed.



Initial Setup
1. Place device on a stable, flat surface.
2. Connect Type-C cable with ≥10cm clearance around vents.
3. Never block the top mist outlet during operation.



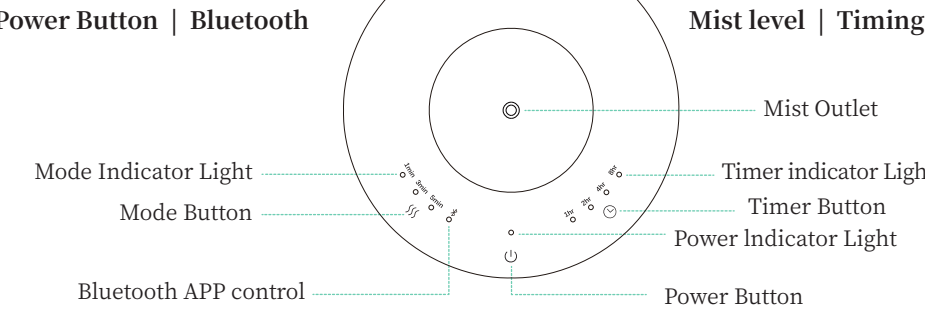
Oil Bottle Refilling
1. Hold base stationary, rotate black top counterclockwise to open. Keep silver base assembly immobile during operation.
2. Detach oil bottle exclusively by holding silver misting module on its sides.
3. Fill oil ≤110mL (3.72oz), never exceeding MAX line.

III Manual Control

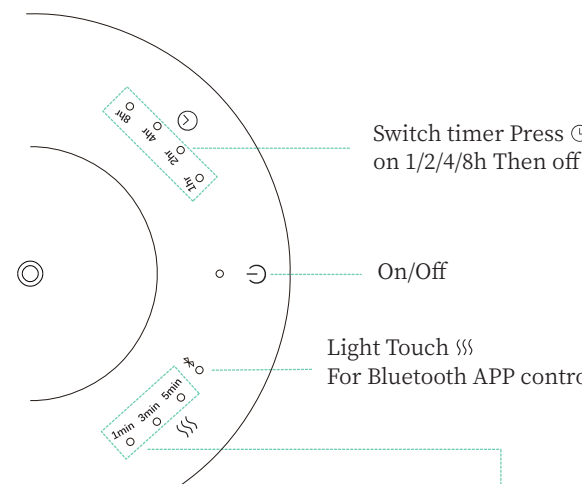
Press power button (1 click) → Select mist level (Low/Med/High/Sleep) → Set timer (1-12hrs).

1. Indicators

Power Button | Bluetooth



2. Quick Set Up



Gear	Phase	Cycles
1min	60/60s	Cycle till end
3min	60/180s	Cycle till end
5min	60/300s	Cycle till end
Munbers like “60/60s” =60 seconds active/60 seconds interval.		

IV Indicator Lights & Troubleshooting

LED Status	Meaning	Action
Solid Blue	Normal Operation	-
Flashing Red	Low Power <20%	Connect to 5V/2A charger
Bluetooth LED Off	Touchscreen Mode	Tap surface Set/ Light Touch Switch Mode
Bluetooth LED On	Pairing Mode	Complete pairing via APP
Tap Switch Timing Mode	Timing Duration Switch 1/2/4/8h	Light Touch to select duration
Tap Switch Mist Mode	Mist Level: 1/3/5min	Light Touch to adjust intensity

V APP Download and Setting

3 Different Ways Download App

Scan the code
Download with browser
<http://amos.drp.lbslm.com/download.html>

APP SET UP

App set up

Get it on Google Play

Available on the App Store

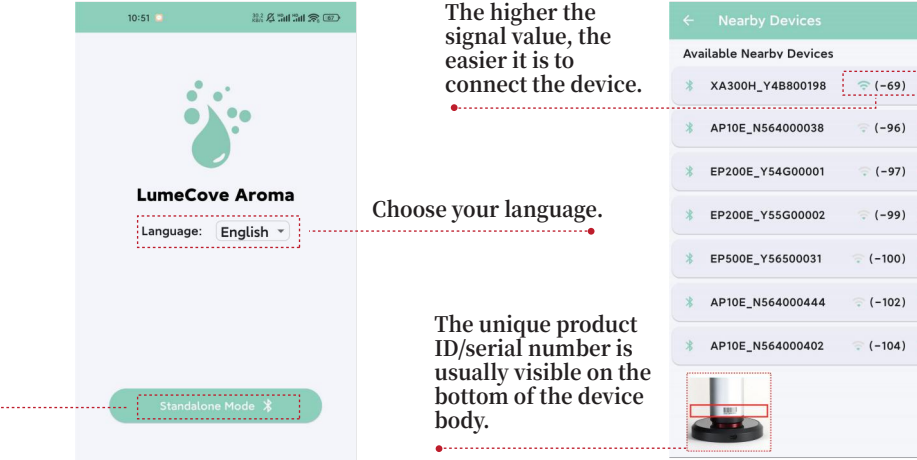
APP download

Search “SMARTSCENT MACHINE” and Install app with your Mobile.

Scan QR code → Download “SmartScent” app → Pair via Bluetooth (default PIN: 8888).

▲ Bluetooth Limitation

Control interruption beyond 9m range. Last settings retained post-disconnect.

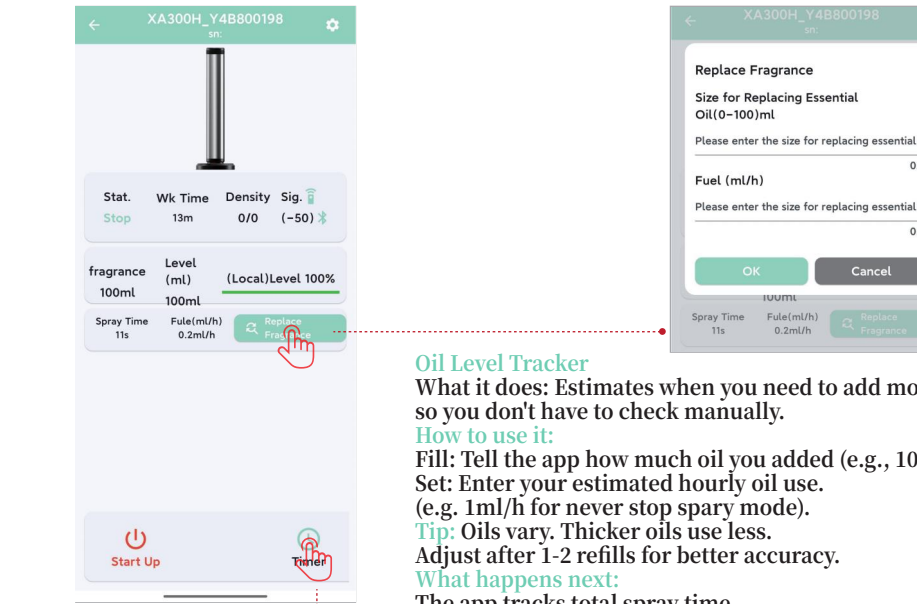


The higher the signal value, the easier it is to connect the device.

Choose your language.

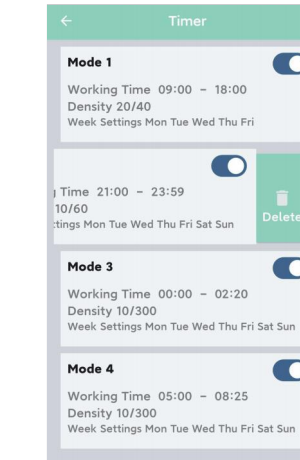
The unique product ID/serial number is usually visible on the bottom of the device body.

Enable Bluetooth on your phone, then tap the “Connect” button in the app to pair the device.



Oil Level Tracker
What it does: Estimates when you need to add more oil, so you don't have to check manually.
How to use it:
Fill: Tell the app how much oil you added (e.g., 100ml)
Set: Enter your estimated hourly oil use. (e.g. 1ml/h for never stop spray mode).
Tip: Oils vary. Thicker oils use less.
Adjust after 1-2 refills for better accuracy.
What happens next:
The app tracks total spray time. It calculates remaining oil: Starting Amount -(Total Time x Hourly Use). Shows a “Low Percent Oil” when it's time to refill.
Good to know:
This is an estimate based on your settings. Very accurate after fine-tuning your hourly use number. (Often not needed for casual home use).

Edit timer for Mode Adjustment



Key Functionality:
Seamless Automation Activation. Initiate Bluetooth mode at any time (24h*7 Days operation supported). Requires sustained Bluetooth connection.

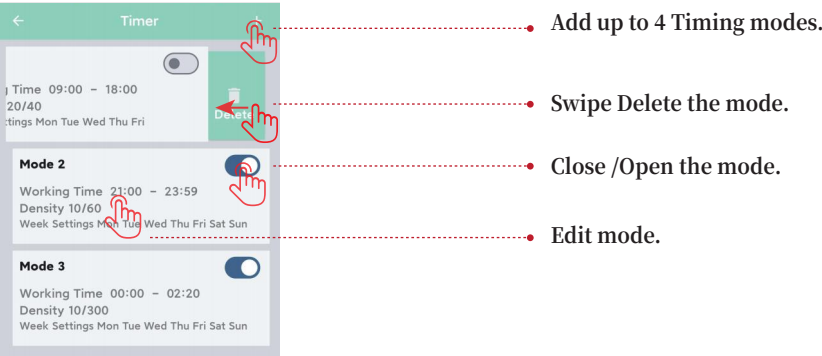
Execution Sequence Logic:
Mode1→Mode 2→Mode 3-Mode 4 (Automatically cycles through preset modes).

Mode-Specific Constraints:
Mode 1: Exclusively operates Monday-Friday
Modes 2/3/4: Execute daily per schedule.

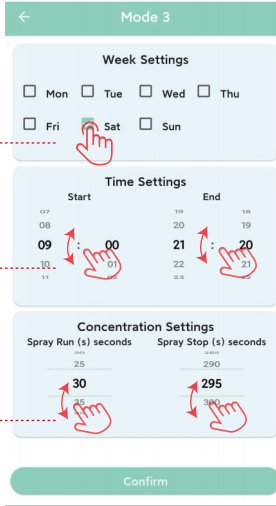
How these modes work ?

Key Point	Detail	Verification from Image
Workday-Exclusive Mode	Mode 1 only active Mon-Fri	Mode1 Week Settings: Mon/Tue/Wed/Thu/Fri selected
Cross-Day Transition	Mode 3 (00:00-02:20) seamlessly executes past midnight	Mode3 Week Settings: Mon-Sun enabled
Forced Sleep Period	System forcibly stops misting during 02:20-05:00	Confirmed by mode transition gap (Mode3 ends at 02:20 → Mode4 starts at 05:00)
Density Control	Cycle Format: X/Y = Mist X seconds / Pause Y seconds	Example: 10/300 = 10-second misting + 300-second pause
Bluetooth Override	Bluetooth connection overrides physical button control	All mode toggles HAVE BEEN SET to ON (Bluetooth: HIGHEST PRIORITY)

Quick App Set Up



Set weekly operating days.
NOTE: Machine won't run on unselected days this week.
If issues occur during use, check mode settingsimmediatly.



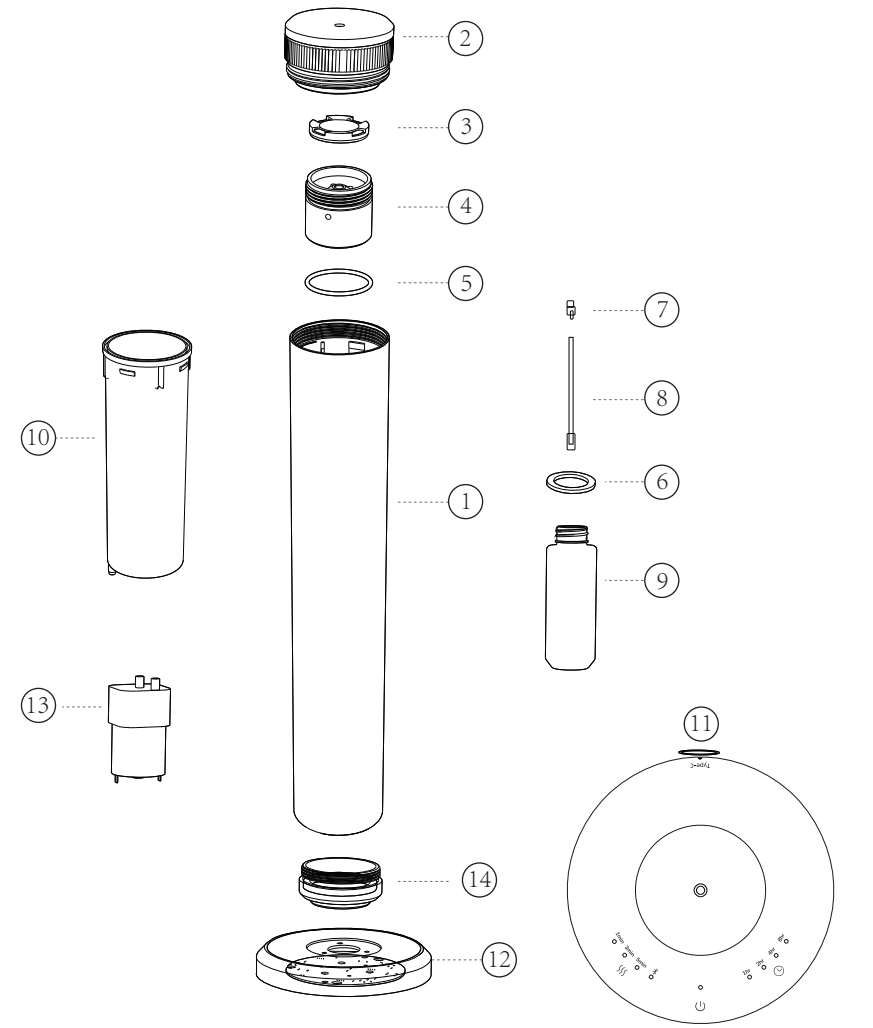
Customize Setting Spary cycle:
Mist Run:5-300s
Mist Stop :5-300s
Per cycle,(5-sec steps)
For stronger fragrance intensity or larger spaces:
Select longer mist duration with shorter off-cycle intervals.

VI Product Structure

1.Exterior Components		
NO.	Component	Key Feature
①	Aluminum Alloy Shell	Protects piezoelectric components & circuits, assists heat dissipation
②	Atomizer Head Top Cover	Seals piezoelectric disc, directs mist upwards
③	Oil Baffle	Controls oil flow to disc, prevents splashing
④	Atomization Housing	Encloses disc, creates atomization zone
⑤	Silicone Seal Ring	Isolates vibration, prevents oil leakage
⑥	Flat Washer	Provides airtight seal at static joints
⑦	Atomizer Core	High-frequency vibration fragments oil into nano-mist
⑧	Oil Absorption Tube	Transfers oil to disc via capillary action
⑨	Oil Tank	Stores pure essential oil (no water needed)
⑩	Oil Tank Slot	Holds oil tank securely, aligns with tube
⑪	Type-C power port	Connects power supply (5V/1A)
⑫	Touch screen/ Bluetooth control panel	Primary user interface for controlling mist modes/timer/settings with tactile feedback.

2.Internal core components		
NO.	Component	Key Feature
⑬	Air Pump	Propels nano-mist outward via low-pressure airflow (<35dB noise).
⑭	Base Support Bracket	Secures main unit, provides stability and protects bottom ports

VII Component Diagram



▲ Note:

The pictures in the instruction manual are for reference only; the actual product included in the packaging shall prevail.

VIII Accessories List & Functions

Accessory	Quantity	Image	Function & Usage
Oil Baffle	2		Prevents oil backflow; Insert vertically.
Atomization Housing	2		screw clockwise to seal mist chamber.
Silicone Seal Ring	4		Seals housing joints; Replace if deformed
Flat Washer	4		Seals gaps to prevent oil/gas leaks
Atomizer Core	4		Clean with alcohol,Replace if: · No mist production · Visible cracks · Abnormal noise
Oil Absorption Tube	4		Soak in oil only
Oil Tank	2		Fill pure essential oil NEVER use water/ harsh chemicals
User Manual	1		Read Before use
Type-C Adapter(5V/2A)	1		Use ONLY 5V/2A adapter
Power Supply Cord	1		Connect to adapter & outlet
Lint-Free Wipe	1		Gently clean core surface
Silicone Bristle Brush	1		Remove oil residues from ceramic plate;
Long Nose Plier	1		Use : Only if atomizer core is clogged Example : No mist after cleaning

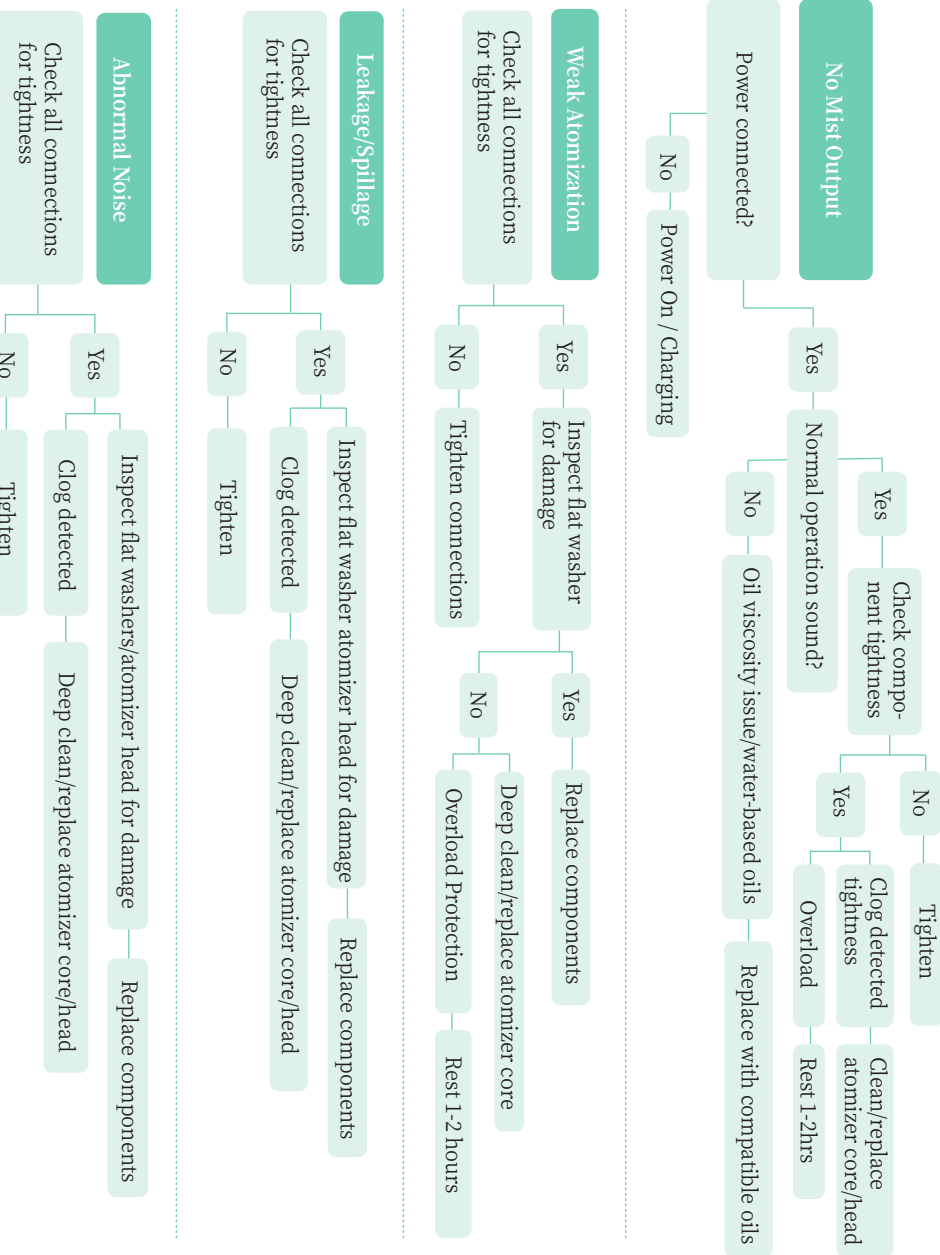
IX Safety Warnings

1. Strict Prohibitions	2.Optimized Maintenance Guidelines
Water Mixtures • Never add water to essential oils. • Prohibit water-based essential oils. • Never submerge or wipe with Dripping coths.	Deep Cleaning: Clean atomizer head & oil tank with 98% alcohol every 1-2 months.
Unauthorized Modifications • Prohibit unauthorized repairs. • Contact seller customer service for malfunctions	Oil Refill: Refill/replace oils when <10mL remains.
Physical Hazards • No device drops from heights. • Avoid damaged power cordsfoveroaded sockets. • Never plug/unplug with wet hands.	Oil Specification: Use 12-28cP viscosity oils at 25°C (e.g. LumeCove) to prevent reflux.

3.Safety Protocols 4. Avoidable Operations

Power: *Original adapter required. *Operation in ventilated areas, away from flammables.	Storage: *Empty oils & unplug if unused >30 days.	Usage Practices Keep face >30cm from mist outlet to avoid inhalation discomfort. Align Type-C connector vertically, no reverse/bend-ingforce permitted.
Inspections: *Check adapter cables for damage/oxidation monthly. *Avoid liquid contact with ports (IPX4 protection)	Notes: *Indoor use only. *Product specifications prevail over imagery. *Retain manual,contact seller for digital copy if lost.	Placement aintain >30cm distance from mist outlet. Avoid dry operation without essential oils.
ECO Note: Dispose via certified e-waste channels. Dispose packaging according to local regulations.		

X Troubleshooting



XI Product Maintenance Guide

Daily Cleaning Procedure for Scent Change:

- Empty residual oil and store properly.
- Spray alcohol on residue points (atomizer/outlet), gently wipe with lint-free cloth.
- Fill atomizer bottle with 10-20ml alcohol , shake vigorously to dislodge oil. Discard.
- Add 10ml fresh alcohol, run machine for 10 minutes. Clean cycle complete.

Deep Cleaning for Machine Maintenance:

- Perform deep cleaning if:**
Mist output decreases
Clogging occurs due to residue buildup
- Steps(Please scan the qr code see video):**
Disassemble atomizer core, flat washers, and other parts.
Soak components in alcohol for thorough cleaning. Reassemble and test.
Replace components if issues persist.

This device complies with part 15 of the FCC Rules. Operation is subject to the following two conditions: (1) This device may not cause harmful interference, and (2) this device must accept any interference received, including interference that may cause undesired operation.

Any Changes or modifications not expressly approved by the party responsible for compliance could void the user's authority to operate the equipment.

Note: This equipment has been tested and found to comply with the limits for a Class B digital device, pursuant to part 15 of the FCC Rules. These limits are designed to provide reasonable protection against harmful interference in a residential installation. This equipment generates uses and can radiate radio frequency energy and, if not installed and used in accordance with the instructions, may cause harmful interference to radio communications. However, there is no guarantee that interference will not occur in a particular installation. If this equipment does cause harmful interference to radio or television reception, which can be determined by turning the equipment off and on, the user is encouraged to try to correct the interference by one or more of the following measures:

- Reorient or relocate the receiving antenna.
- Increase the separation between the equipment and receiver.
- Connect the equipment into an outlet on a circuit different from that to which the receiver is connected.
- Consult the dealer or an experienced radio/TV technician for help.

FCC Radiation Exposure statement

The device has been evaluatec to meel general RF exposure requirement. The device can be used in portable exposure condition without restriction.