

USER MANUAL

Car Portable Multimedia Player

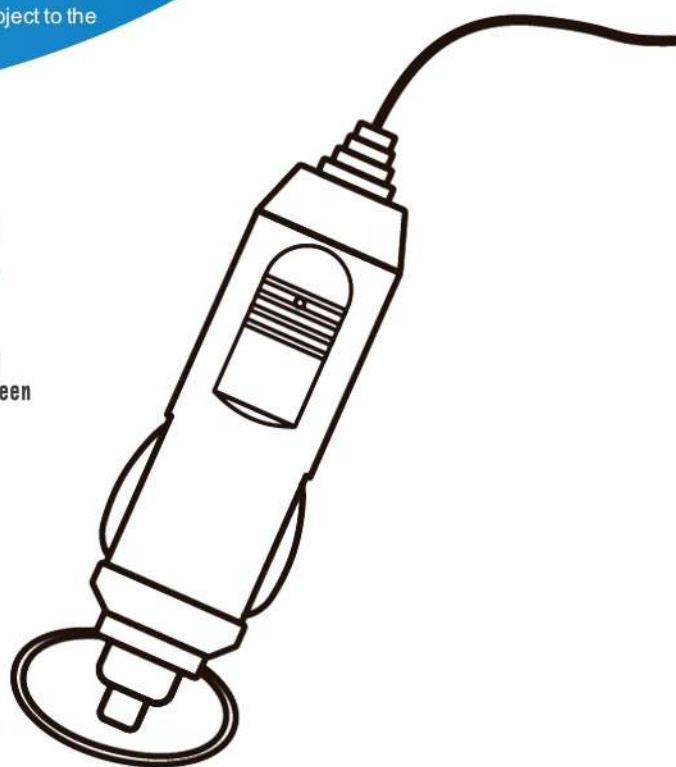
This product is constantly being updated, The interfaces, accessory styles and so on in the user manual are for reference only, The actual product shall be subject to the physical item you receive.



Phone link



Touchscreen



Warm prompt

1. Please carefully read the following instructions.
2. Plan the optimal location before fixing.
3. When connecting the camera, please correspond to the body identification.
4. For the speed and security of file storage, regularly clean up the storage space.
5. With the advancement of technology, the product structure and parameters will continue to be improved. This graphic and text are for reference only. If there are any pictures or descriptions that do not match the actual product, please refer to the actual display of the product.

● **If this device causes harmful interference to radio or television reception, it can be determined by turning the device on and off. It is recommended that users try one or more of the following measures to correct the interference:**

- Adjust or reposition the receiving antenna to increase the distance between the device and the receiver.
 - Connect the device to a socket that is different from the circuit connected to the receiver.
 - Consult a dealer or experienced radio/technical personnel for assistance.
- **Attention:** Any changes or modifications to this device without explicit approval from the manufacturer may render your permission to operate this device invalid.
1. The device may not cause harmful interference.
 2. The device must accept any received interference, including interference that may cause unexpected operations.
- **This device complies with the FCC radiation exposure limit for uncontrolled environments. The installation and operation of this device should maintain a distance of at least 20cm between the radiation device and your body.**

Disclaimer

- Android Auto and the Google Play logo are trademarks of Google Inc. Android is a trademark of Google Inc. Apple, Apple CarPlay, and the Apple logo are trademarks of Apple Inc., registered in the U.S. and other countries. App Store is a service mark of Apple Inc., registered in the U.S. and other countries.
- Use of the Apple CarPlay logo means that a vehicle user interface meets Apple performance standards. Apple is not responsible for the operation of this vehicle or its compliance with safety and regulatory standards.

INSTALLATION METHOD

The received mounting bracket shall prevail. There are 2 types of brackets, and the installation methods are as follows:

Available for selection, installation methods vary depending on the model. This image is for reference only

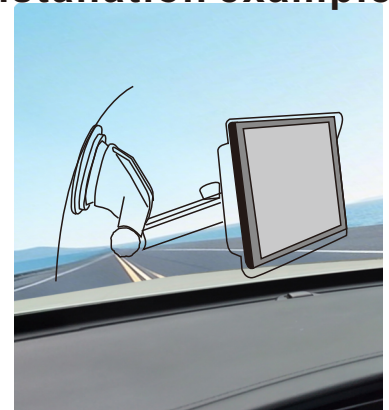
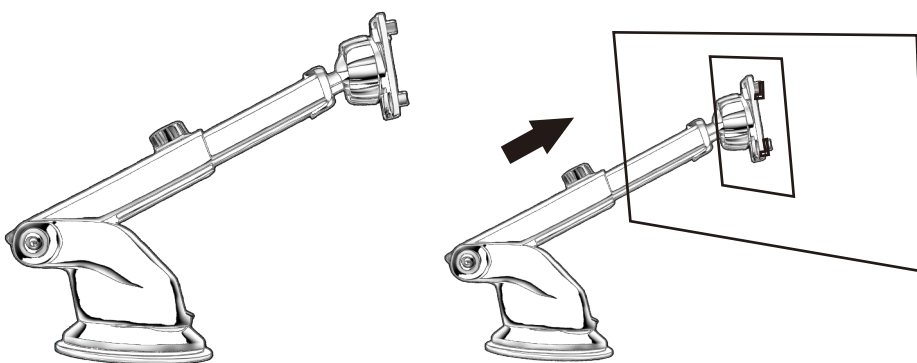
Installation method 1:

Glass suction cup type suspension installation.

Bracket 1

Bracket connection host

Installation example :



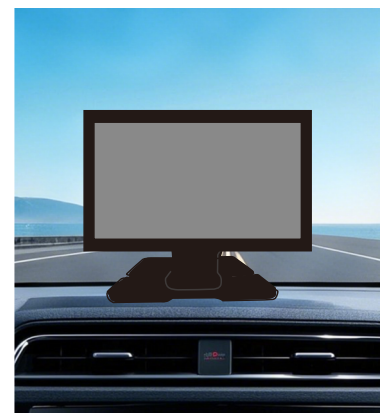
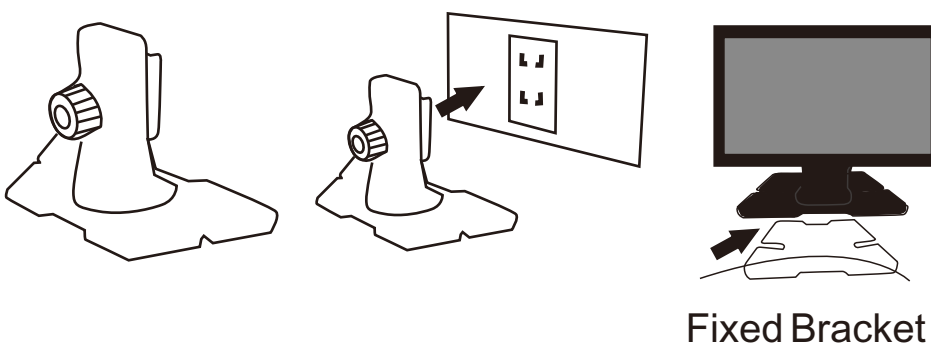
Installation method 2:

Desktop horizontal installation

Bracket 2

Bracket connection host

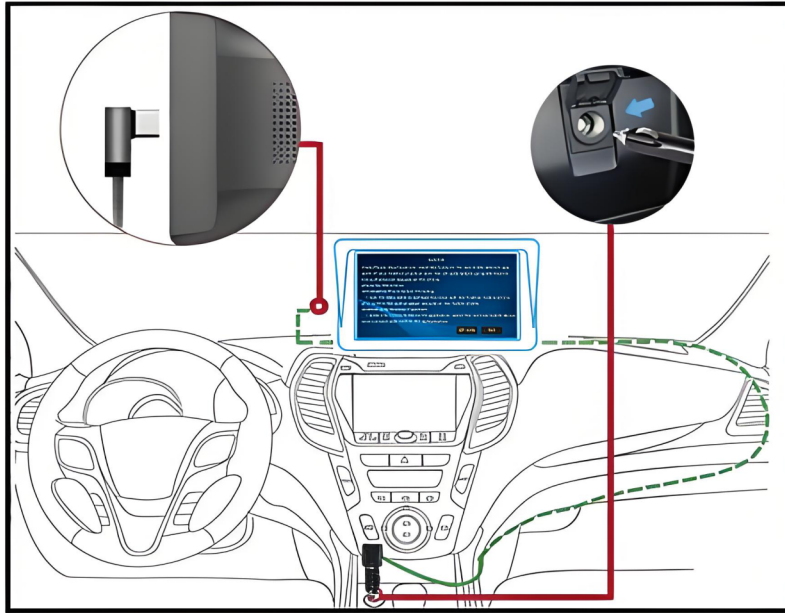
Installation example :



The bracket style is subject to the actual product style, and the above pictures are for reference only

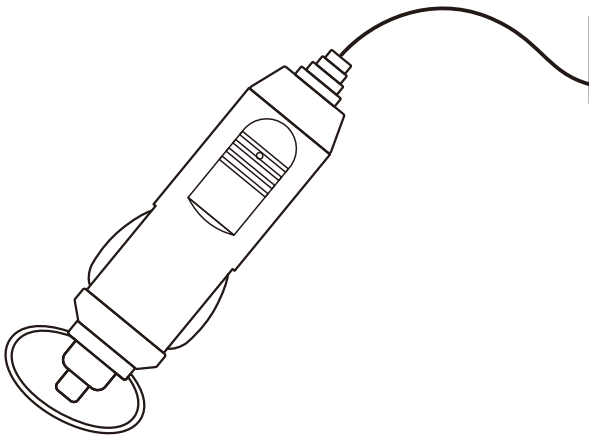
COMMON WIRING METHODS

(wiring may vary slightly for different products, this diagram is for reference only)



CIGARETTE LIGHTER POWER PLUG

This device is powered by the cigarette lighter power plug. After the device is installed, insert the power plug of the cigarette lighter into the cigarette lighter, and then it can be turned on for use.



Power supply voltage: 12V~30V DC

The actual goods received shall prevail.
Voltage Range Notice The voltage ranges vary with different product models. Please refer to the product identification for specific information.

Product images are for reference only. Appearance and specifications are based on the actual physical product.

Note: Please use the standard cigarette lighter charger. If you do not use our original charger, please purchase a high-quality cigarette lighter charger that meets safety standards. Failure to do so may damage the device or cause other hazards due to insufficient voltage, overheating, and may also result in the FM transmission function not working properly.

BT PAIRING CONNECTION

You can use BT music or BT calls. When using wireless CarPlay you need to pair the BT connection first.

1. Click settings icon to enter setting page. and then click BT icon to enter BT connection page.
2. Search the BT name of the device , the phone will pop up the relative matching code ,click and confirm to match and connect.
PIN Number: "0000" or "1234" or "123456" or "88888888" (If need)
3. Pairing devices When the car is not paired with a device , go to Phone>Settings>BT>Search for Device>Find the BT name "CAR****" of the host to connect. The phone will pop up a PIN code box, enter (PIN code on the settings interface) or confirm directly, and display "Phone Device Name to indicate successful connection.

AUDIO OUTPUT METHOD

There are 3 audio output methods:



Built-in speaker



AUX line transmission

(if your car has one)

Built-in speaker

Built-in speaker output sound. When playing music with a USB/TF flash drive, the sound comes out from the built-in speaker on the back.

This unit has built-in speaker, If you want to make sound louder you can transfer it to your car 's speakers.

AUX

The AUX line is transmitted to the original car player.
(Only some models support)

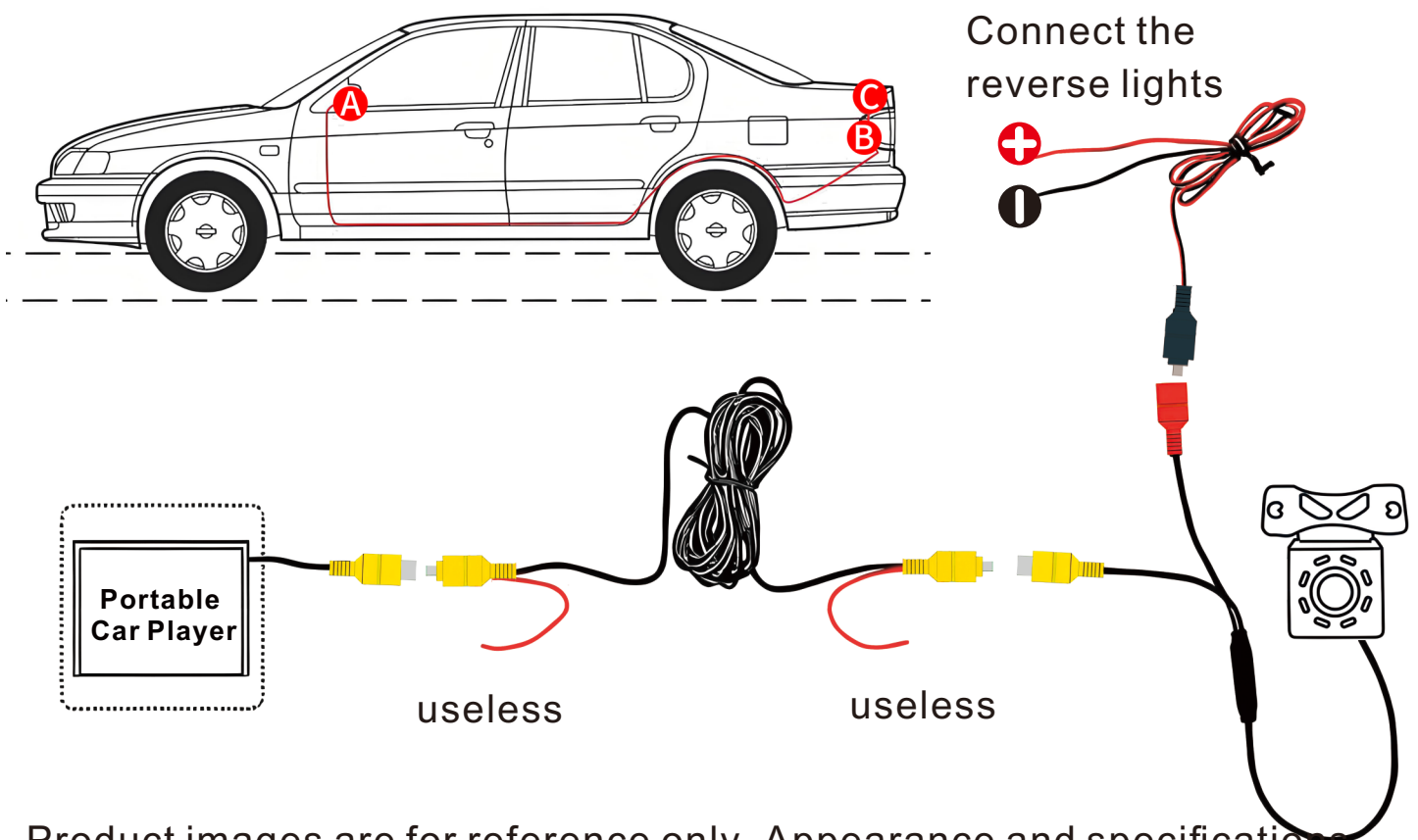


REVERSING CAMERA CONNECTION (CCD)

The reversing video input can be connected through the RCA adapter cable. When there is a signal at this port, the LCD will automatically switch to the camera image. (The camera is purchased separately.)

- As shown in the figure, the yellow line is a schematic wiring diagram of the extension line of the rearview camera. (From A to B)
- The red short line at the end of the extension line is the reversing trigger line, which is connected with the power line of the reversing light. When reversing, the rearview camera will be triggered to work. (From B to C)

A: Portable Car Player
B: Rearview Camera
C: Reversing Light Single



Product images are for reference only. Appearance and specifications are based on the actual physical product.

[Safety Warning]:

When driving normally, please try not to turn on the rearview cam to avoid distracting attention.

FUNCTION DESCRIPTION

AV IN (CAM IN)	Video input interface. Connect the reversing camera through the 2.5mm plug to RCA cable.
USB Port	You can plug in a USB device to play music, video, and pictures. Mirrorlink or carplay or Android Auto can also be connected through this port. (Some models support Type-C) (Some models do not come with a USB interface)
TF Card	You can insert TF card device to play music, video and pictures (supported by some models)
AUX Out	You can output the sound to other audio equipment through the 3.5mm AUX cable. (supported by some models)
IR	Remote control signal receiver. (Only some models have remote control)
DC IN	3.5mm power cord plug (some models are Type-C power plug)
MIC IN	3.5mm microphone jack. (External lavalier microphone can be connected). (supported by some models)
V-OUT	You can output the video signal to other monitor devices via the 3.5mm AUX cable. (supported by some models)
POWER	Power button to power on/off. (supported by some models)

Important note:

The described functions correspond to a series of products. The functions vary by model and are for reference only. Please refer to the actual product

Mirror Link Function connection

Compatibility note: Not available on all phones.

- Functionality depends on product model and connection type. Refer to physical unit for final specifications.

For android mirror link

1. For wired mirror link (supported by some models)

Connect your mobile phone with the device by original cable. Then your phone will pop up a notification, pls choose "trust", then you can enjoy the full hd display of the video or image.

Please connect the BT link for successful sound transmission. (Some models require mobile app installation authorization, please refer to the displayed content)



You can also control your android phone here

2. For wireless mirror link (supported by some models)

Please use your mobile phone to wirelessly search for this product device and connect to it.

Note: Please download the prompted APP application on your Android phone. The prompt requires APP authorization. Please refer to the displayed content.

Enter the mobile app application, select the wireless search device, click connect and confirm authorization.

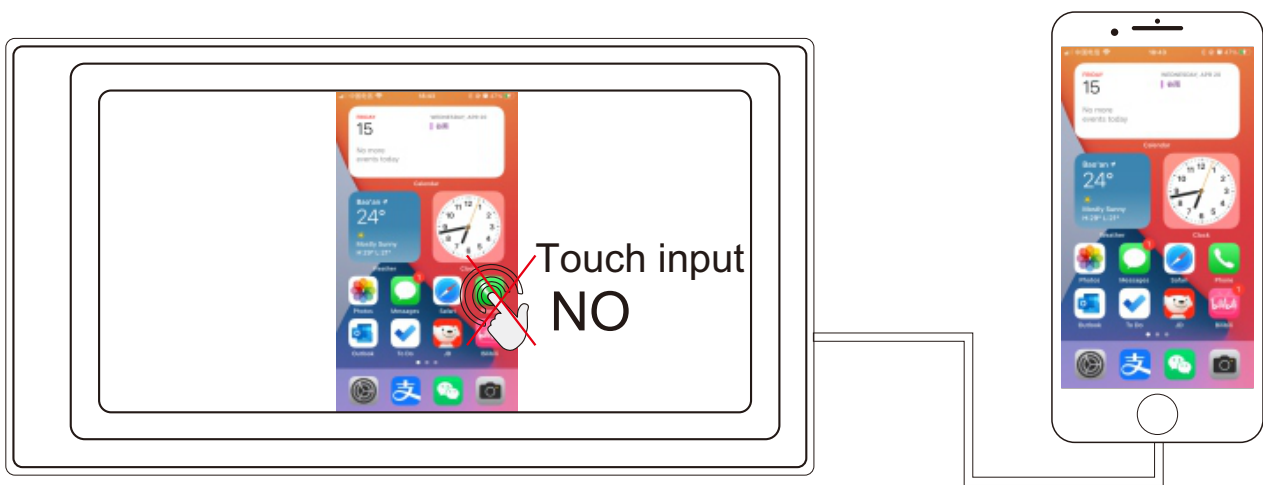
For iphone mirror link

Compatibility note: Not available on all phones.

- Functionality depends on product model and connection type. Refer to physical unit for final specifications.

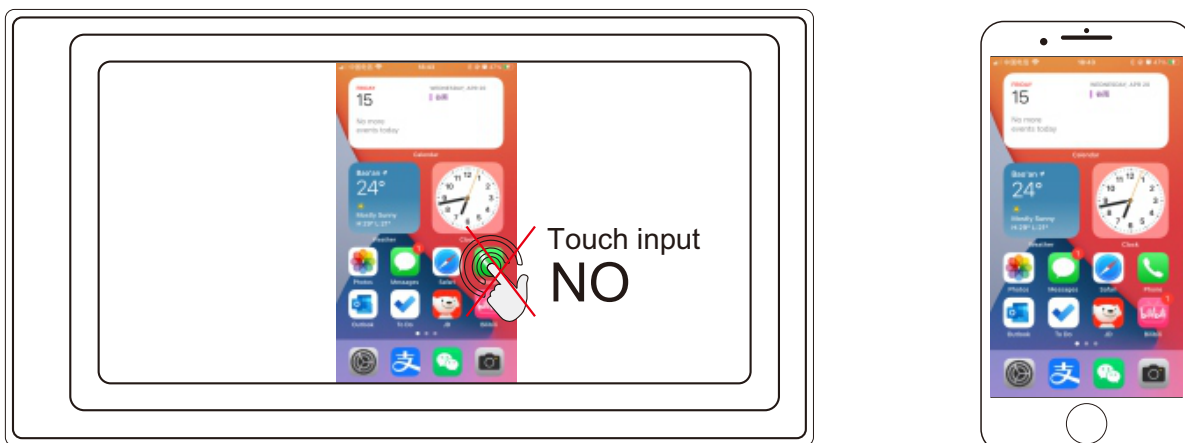
1.For wired mirror link (supported by some models)

Connect your mobile phone with the device by original cabel. Then your phone will pop up a notification, pls choose "trust", then you can enjoy the full hd display of the video or image.



2.For wireless mirror link (supported by some models)

Please wirelessly connect your phone to the device and select 'Car - AirPlay' from 'Screen Mirrors' on your iPhone



Apple CarPlay (wired & wireless)

Please refer to the specific model's specifications.

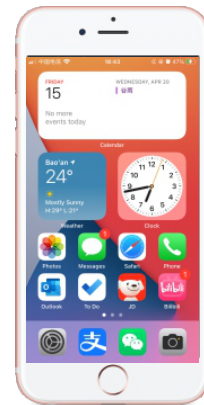
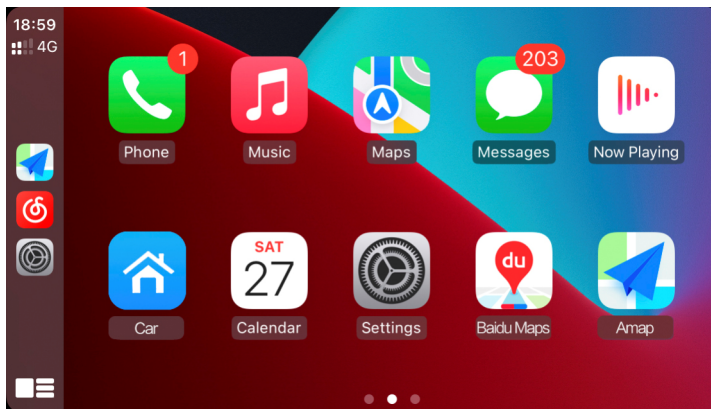
Note: Some models do not support wireless connections.

1.Wired Connection

Please connect iPhone to USB port with Apple original/certified cable.

2.Wireless Connection

Wireless connection: first turn on the BT and wifi functions of the mobile phone, and then connect the BT. Then it will automatically enter the CarPlay interface. (Note: The signal is transmitted through wifi at this time so even if the BT function is turned off, it will be transmitted normally. When the wifi function is turned off, CarPlay will be disconnected.)



You can also control your iPhone here.

Android Auto (wired & wireless)

Please refer to the specific model's specifications.

Note: Some models do not support wireless connections.

This feature is not supported in all countries, and "Google Play" services need to be available locally.

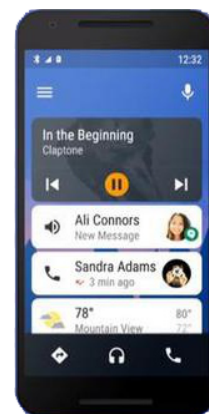
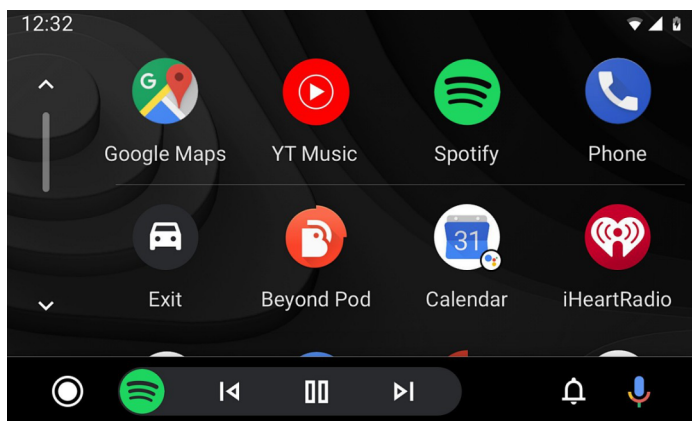
Need to download and install "Android auto" software in "Google Play"
A mobile phone with Android 10.0 or higher is needed. Must use a valid data cable connection.

1.Wired Connection

Wired connection: Just connect the USB data cable, and then it will automatically enter the Android Auto interface.

2.Wireless Connection

Wireless connection: First turn on the BT and wifi functions of the mobile phone, and then connect the BT. Then it will automatically enter the Android Auto interface. (Note: The signal is transmitted through wifi at this time, so even if the BT function is turned off, it will be transmitted normally. When the wifi function is turned off. Android Auto will be disconnected.)



You can also control your iphone here.

TF

Click on the application icon to enter the application interface, where you can enter the audio and video playback interface. Select the audio and video file to play . Audio/video support

formats:AVI,MKV,QT,MPG,ASF,FLV,RMVB,MP3,WMA,ACC,WAVE,FLAC,APE.OGG.

Mp4 Image supported formats: BMP/GIF/JPG/PNG

BT

You can use BT music or BT calls. When using wireless CarPlay. you need to pair the BT connection first.

1.Click settings icon to enter setting page. and then click BT icon to enter BT connection page.

2.Search the BT name of the device , the phone will pop up the relative matching code ,click and confirm to match and connect.

PIN Number:"0000" or"1234" or"123456"or"88888888"(If need)

3. Pairing devices When the car is not paired with a device , go to

Phone>Settings>BT>Search for Device>Find the BT name "CAR****" of the host to connect.

The phone will pop up a PIN code box, enter (PIN code on the settings interface) or confirm directly, and display "Phone Device Name to indicate successful connection.

4.Call function

① Click on the number in the interface to input the phone number.

If the input is incorrect, click  to delete it one by one.


② After entering the phone number,

press  to dial;

Press  to end the current call.

5. Telephone directory

① Enter the phone book interface: Click the  [Sync Contact] button to confirm the pop-up synchronization contact book request.

② Search for contacts: After synchronizing the contacts, clicking the  button will pop up a search box. Enter English letters to search.

6. BT music playback function

① BT music playback interface, which can be connected to a BT phone for playback/pause/up/down function operations

② Use BT music function to play songs on your phone.You must first go to the music page on your phone and then click play to play some music-players.

◀ The previous song

||/◀ Pause/Play

▶ Next song

Factory Set

Professional maintenance, not suitable for end users.
Password protection.

Sound setup

You can adjust the sound effect parameters according to your own needs.

Language setting

There are multiple languages to choose from, and you can freely change the language of different countries
The default language is English

Time Setup

Linking your iPhone will automatically synchronize the time.

Android Auto sync time is not supported, you can set the time manually here, and the system will record the time.

Wi-Fi

This car player has Wi-Fi signal.
However, the Wi-Fi signal is only for CarPlay/AndroidAuto/MirrorLink wireless data transmission. When you have connected your mobile phone via Bluetooth for the mentioned functions, Wi-Fi will be turned on to replace Bluetooth for better and faster signal.

NOTE: You can't connect this Wi-Fi actively as a common Wi-Fi for internet browsing.

Common problem

1. Wireless carplay often disconnect or fail to work

When connecting to Carplay, do not connect your phone to other wireless networks to avoid Carplay disconnecting.

2. The bracket is not firm, the suction cup has weak adhesion, and the adhesion is unstable at high temperatures

When pasting, pay attention to keeping the pasting area clean and dry to avoid bubbles and unstable adhesion during pasting.

3. BT is not synchronized, and the caller cannot hear sound or there is noise

Ensure that the microphone position is not blocked by foreign objects.

4. How to connect the MirrorLink.

Before connecting the mobile phone, click the phoneLink function of the device, and then select the mode as Mirror, then connect the data cable of the mobile phone, and click the authorization on the mobile phone to connect.

5. How to make the sound come out through the speakers in the car.

1. The built-in speaker of our device can emit sound, you can turn it off in the system settings;

2. Transmit the sound to the original car radio through the FM transmitting function of the device (for example: select 86.3MHZ on the device, and then play USB music, then use the car radio to search for 86.3MHZ):

Some models require the "NO" switch on the FM transmitting display to be turned on

3. Transmit the audio to the original car player through the AUX OUT (3.5MM) interface of the machine (only some models have this interface).

6. BT not working properly

Delete the paired on the mobile phone, and then re-search the BT . After the pairing is successful, it can be used normally.

7. Can't automatically connect with CarPlay or Android Auto.

1. You need to set CarPlay or Android Auto as the default connection mode on the Phonelink setting interface, and then it can automatically jump to the CarPlay or Android Auto interface when USB is connected.
2. If it is a wireless connection, you need to turn on the wifi on the mobile phone. and then when the BT is connected, it will automatically jump to the CarPlay or AndroidAuto interface.

8. The sound of playing music or making a phone call is low.

Press and hold your finger on the top of the screen and slide down, pull down the statusbar to adjust the playback volume: Return to the main interface during a call, pull down the status bar to adjust the call volume.

9. C an't remember time and date.

settings The machine does not have a battery so there is no way to remember the time and date After connecting to the mobile phone, the time and date will be automatically updated.

10.Can't play TF card, USB music and video.

Use 8G or 16G TF card and USB devices, some large-capacity storage devices may not support; format the storage device, use the file system FAT32: Some formats may not be compatible; Please use common formats

Thank you again for using our product. If you have further questions. please contact customer to meet service staff. Product UI or functions may be modified and upgraded from time to time without notice. It is normal if the manual has some discrepancies.

This device complies with part 15 of the FCC Rules. Operation is subject to the following two conditions: (1) This device may not cause harmful interference, and (2) this device must accept any interference received, including interference that may cause undesired operation.

Any Changes or modifications not expressly approved by the party responsible for compliance could void the user's authority to operate the equipment.

Note: This equipment has been tested and found to comply with the limits for a Class B digital device, pursuant to part 15 of the FCC Rules. These limits are designed to provide reasonable protection against harmful interference in a residential installation. This equipment generates uses and can radiate radio frequency energy and, if not installed and used in accordance with the instructions, may cause harmful interference to radio communications. However, there is no guarantee that interference will not occur in a particular installation. If this equipment does cause harmful interference to radio or television reception, which can be determined by turning the equipment off and on, the user is encouraged to try to correct the interference by one or more of the following measures:

- Reorient or relocate the receiving antenna.
- Increase the separation between the equipment and receiver.
- Connect the equipment into an outlet on a circuit different from that to which the receiver is connected.
- Consult the dealer or an experienced radio/TV technician for help.
- This equipment complies with FCC radiation exposure limits set forth for an uncontrolled environment. This equipment should be installed and operated with minimum distance 20cm between the radiator & your body.