

RECEIPT

Antenna data sheet

mane RF antenna
model ANT315M

RF 315M 433M 2.4G

Manufature:Dongguan Saishuo Electronics Co., LTD

Add:2nd Floor, No. 262, Xinfeng West Road, Liuwu Village, Shijie Town, Dongguan City

Product shape and structure

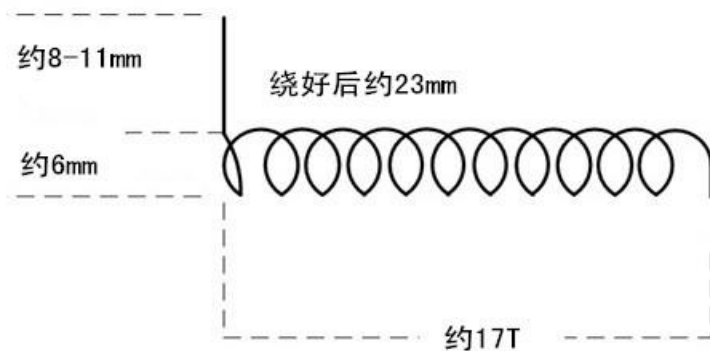
Product	RF Antenna	Model	ANT315M	Weight	约0.9g
---------	------------	-------	---------	--------	-------

一、Product Picture



二、Structure Chart

SAISHUO 赛硕

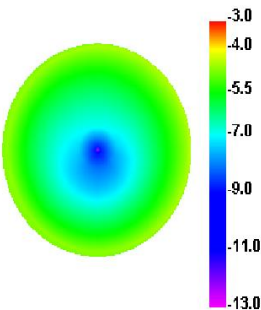


Product and electrical specification sheet

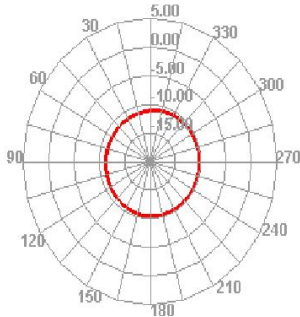
PRODUCT	RF ANTENNA	MODEL	ANT315M	COLOUR	Black or white
specification	The straightened length of this antenna is approximately 25cm, wound around a diameter of about 6mm. One end should be stripped of approximately 3mm of tin, with a soldering tail length reserved at around 8-11mm. The copper wire diameter is 0.5mm with an outer diameter of 1.3mm. It can generally be used on both receiving and transmitting modules. If longer distance is required, the antenna can be straightened.				
frequency domain	315MHZ或433MHZ				
SWR	< 1 . 8				
GAIN	2 — 3 dbi				
input impedance	50 (OHM)				
Interface means	Solder directly onto the PCB				
test items	Experimental results and performance				
rated operational voltage	DC3.3-5V				
rating temperature	- 10°C ~ +45°C				
Destructive temperature test	< -30°C 或 > +60°C				
Drop test	A 75CM tall single unit fell onto the wooden floor surface, but the function was fine				
receiving distance	100 to 4,000 meters, usually 100 to 2,500 meters				
Vibration experiment test	After different levels of vibration, the function is fine				
Insulation test	>5050 teraohms				
appearance dimensi	0.5mm*1.3mm*25CM				
material	tinned copper				
compatibility testing	Generally applicable to 315 MHz, 433 MHz, and 2.4 GHz, etc.				

Radiation pattern

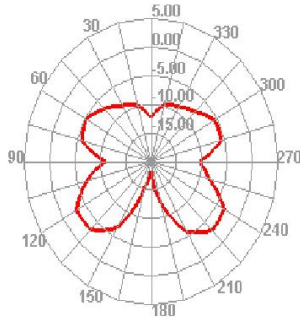
420.000MHz



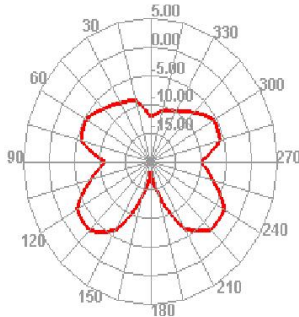
420.000MHz H



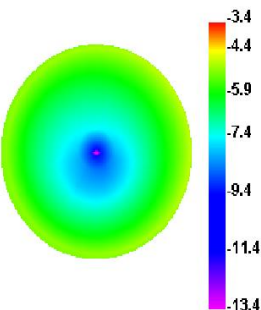
420.000MHz E1



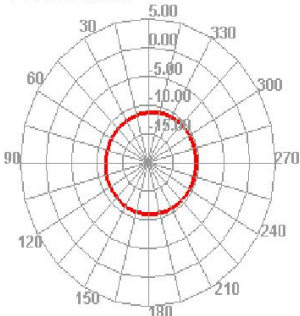
420.000MHz E2



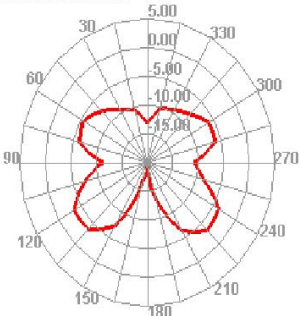
430.000MHz



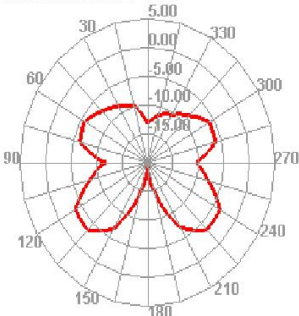
430.000MHz H



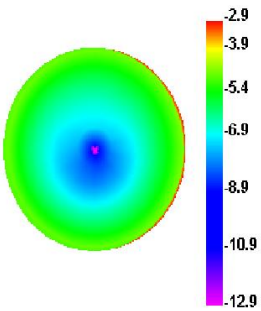
430.000MHz E1



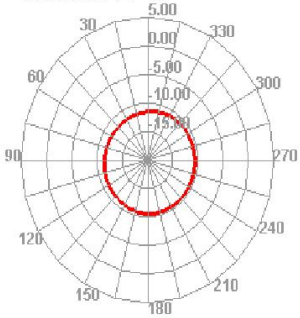
430.000MHz E2



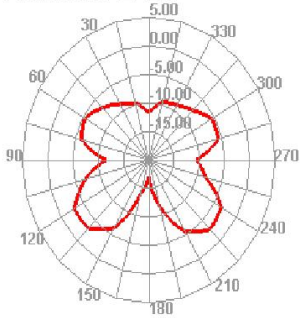
440.000MHz



440.000MHz H



440.000MHz E1



440.000MHz E2

