



DOOR & WINDOW ALARM

DOOR & WINDOW ALARM



EASY[®]
HOME

English 02
Español 18

AFTER SALES SUPPORT
SERVICIO POSVENTA

715344



US

1-800-372-5715

northamerica@bakobrand.com

MODEL / MODELO:
DY220514

09/2025

1

YEAR WARRANTY
AÑO DE GARANTÍA

CONTENTS

1 Safety	4
2 Product overview	6
3 Powering On	6
4 Replacing the batteries	7
5 Pairing the remote	7
5.1 To pair a new remote	7
5.2 To remove a remote	8
6 Using the remote control	8
7 Alarm modes	9
8 Installation guide	9
8.1 Before you start	9
8.2 To mount	9
8.3 Installation tips	10
9 Technical Specifications	10
10 Battery tips	11
11 Troubleshooting	11
12 Warranty	12
12.1 Warranty conditions	12

1 SAFETY

To ensure proper operation of this device, please read this instruction manual carefully before using the device and keep it for further reference.

- Remove and immediately recycle or dispose of used batteries according to local regulations and keep away from children. Do NOT dispose of batteries in household trash or incinerate.
- Even used batteries may cause severe injury or death.
- Call a local poison control center for treatment information.
- Two 1.5V DC AAA ActivEnergy pre-installed batteries in the alarm
- One 3V DC CR2032 cell battery pre-installed in the remote.
- Non-rechargeable batteries are not to be recharged.
- Do not force discharge, recharge, disassemble, heat above 122°F (50°C) or incinerate. Doing so may result in injury due to venting, leakage or explosion resulting in chemical burns.
- Ensure the batteries are installed correctly according to polarity (+ and -)
- Do not mix old and new batteries, different brands or types of batteries, such as alkaline, carbon-zinc, or rechargeable batteries.
- Remove and immediately recycle or dispose of batteries from equipment not used for an extended period of time according to local regulations.
- Always completely secure the battery compartment. If the battery compartment does not close securely, stop using the product, remove the batteries, and keep them away from children.

WARNING

- **INGESTION HAZARD:** This product contains a button cell or coin battery.
- **DEATH** or serious injury can occur if ingested.
- A swallowed button cell or coin battery can cause **Internal Chemical Burns** in as little as **2 hours**.
- **KEEP** new and used batteries **OUT OF REACH of CHILDREN**
- **Seek immediate medical attention** if a battery is suspected to be swallowed or inserted inside any part of the body.
- The remote controller contains non-replaceable battery.



FCC Information

This device complies with part 15 of the FCC Rules. Operation is subject to the following two conditions:

1. This device may not cause harmful interference, and
2. this device must accept any interference received, including interference that may cause undesired operation.



WARNING

- » Changes or modifications to this unit not expressly approved by the party responsible for compliance could void the user's authority to operate the equipment.

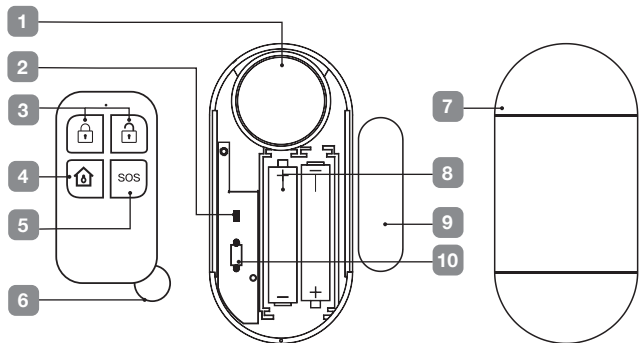
NOTICE:

- » This equipment has been tested and found to comply with the limits for a Class B digital device, pursuant to part 15 of the FCC Rules. These limits are designed to provide reasonable protection against harmful interference in a residential installation. This equipment generates uses and can radiate radio frequency energy and, if not installed and used in accordance with the instructions, may cause harmful interference to radio communications. However, there is no guarantee that interference will not occur in a particular installation. If this equipment does cause harmful interference to radio or television reception, which can be determined by turning the equipment off and on, the user is encouraged to try to correct the interference by one or more of the following measures:
 - » Reorient or relocate the receiving antenna.
 - » Increase the separation between the equipment and receiver.
 - » Connect the equipment into an outlet on a circuit different from that to which the receiver is connected.
 - » Consult the dealer or an experienced radio/TV technician for help.

FCC Radiation Exposure Statement:

This equipment complies with FCC radiation exposure limits set forth for an uncontrolled environment. This equipment should be installed and operated with a minimum distance of 20cm between the radiator and your body. This transmitter must not be co-located or operated in conjunction with any other antenna or transmitter.

2 PRODUCT OVERVIEW



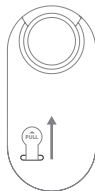
1. Loud 130dB buzzer
2. LED indicator
3. Arm/Disarm buttons
4. Function mode button
5. SOS panic alarm button
6. Hang loop
7. Slide cover

8. Battery compartment (2 x AAA ActivEnergy pre-installed batteries)
9. Magnetic contact sensor
10. Clear button
11. 1 x CR2032 battery (pre-installed in remote)*
12. Adhesive mounting tape*
13. User Guide*
14. Warranty card*

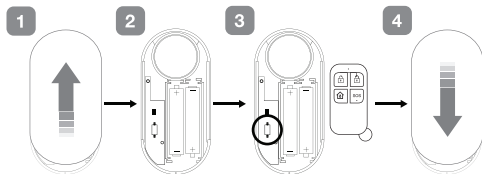
*Not shown

3 POWERING ON

- Remove the battery tab from both alarm and remote before first use.
- Alarm unit uses 2 x AAA batteries (included).
- Remote control uses 1 x CR2032 battery (included).



4 REPLACING THE BATTERIES

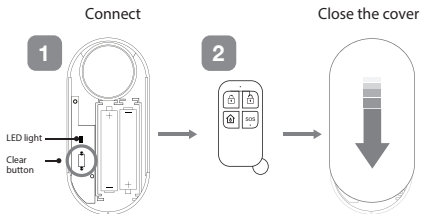


1. Slide up the battery cover.
2. Install 2 x AAA batteries (taking note of polarity indicators).
3. Connect remote control (as per below steps) if required.
4. Slide the battery cover back down.

5 PAIRING THE REMOTE

The first time you set up the Door & window alarm, you may be required to pair the remote.

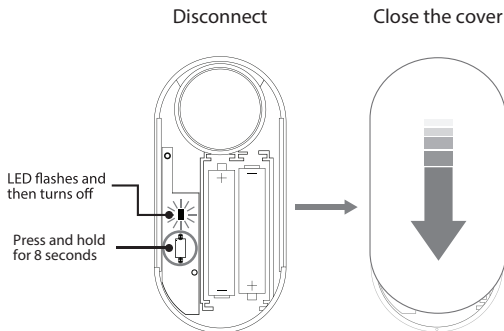
5.1 TO PAIR A NEW REMOTE



1. Press the "Clear" button on the alarm (LED will flash).
2. Within 5 seconds, press any button on the remote.
3. The alarm will beep to confirm successful pairing.

5.2 TO REMOVE A REMOTE

- Press and hold the Clear button for 8 seconds until the LED turns off.



6 USING THE REMOTE CONTROL

ARM

Press Arm when the door/window is closed.
If the door is open by more than $\frac{1}{2}$ ", the alarm will sound immediately.

DISARM

Press Disarm to stop the alarm and disable the alarm/sensor.

SOS

Press SOS to trigger an instant siren (30 seconds)

FUNCTION

Press Function to set alert mode

7 ALARM MODES

Use the Function Button to cycle through 3 alert modes:

MODE	FUNCTION	MODE SELECT SOUND
Doorbell	Plays a chime when the door or window opens	1 chime
Alarm	Loud siren when door opens, silence when close	3 beeps
Reminder	Beeps if door is left open	3 + 3 beeps

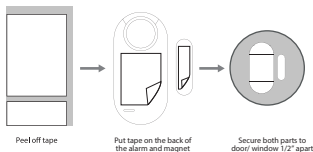
8 INSTALLATION GUIDE

8.1 BEFORE YOU START

- Pair the remote and door/window alarm and test functionality.
- Clean the surface of the door/window and frame you plan to mount to.
- Make sure the alarm and magnet align correctly when the door/window is closed.
- The two parts should be placed within 1/2" of each other.

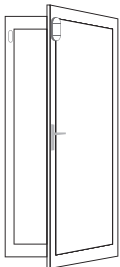
8.2 TO MOUNT

1. Peel off the backing paper from the adhesive tape.
2. Stick the tape to the back of the alarm and magnet.
3. Press firmly onto clean, dry surfaces.
4. Test alignment by opening and closing the door/window.

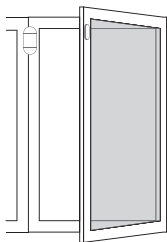


8.3 INSTALLATION TIPS

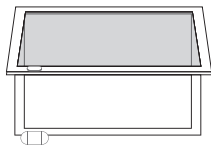
1. The alarm unit and magnet can be mounted on either the door/window or the surrounding frame (sill).
2. When choosing placement, use the larger, flatter surface for the alarm unit whenever possible for better stability.
3. Ensure both parts are aligned and as close as possible when the door/window is closed (less than ½" apart).
4. Install on the internal side of door and windows only.
5. Check for clearance and ensure that neither part obstructs the door or window when it opens or closes.
6. Clean the mounting surfaces beforehand with alcohol wipes to improve adhesive strength.
7. For recessed doors or windows, use mounting spacers or stacked adhesive pads to bring both components to a similar level. Alternatively, the magnet can be recessed into the frame or sill at the user's discretion, as long as alignment and distance are maintained.



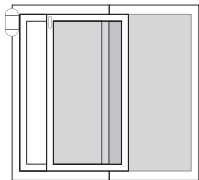
Hinged door



Casement window



Awning window



Sliding door/window

9 TECHNICAL SPECIFICATIONS

Power:	2 x AAA batteries
Remote Power:	1 x CR2032 battery

10 BATTERY TIPS

Low Battery Warning:

When power is low, the device will beep periodically.

Replace the AAA batteries in the alarm or the CR2032 in the remote as needed.

11 TROUBLESHOOTING

ALARM DOES NOT RESPOND TO REMOTE

Ensure batteries are not depleted
Re-pair the remote (see pairing section)
Try replacing the remote's CR2032 battery

REMOTE LED DOESN'T LIGHT UP

Replace the remote's battery

FALSE ALARM / NO ALARM

Check alignment between magnet and alarm
Ensure gap is less than ½" when closed

12 WARRANTY

Please contact our service hotline by phone or e-mail before sending in the device. This allows us to provide support in the event of possible operator errors.

12.1 WARRANTY CONDITIONS

Dear Customer,

The **ALDI warranty** is a full warranty offering you the following benefits:

WARRANTY PERIOD

1 year from date of purchase.

COSTS

Costs: Free repair/exchange or refund.
No transport costs.

HOTLINE

1-800-372-5715

PHONE LINES AVAILABLE

24/7

In order to make a claim under the warranty, please send us:

- The faulty item with all component parts, the original receipt and the warranty card properly completed.

The warranty does not cover damage caused by:

- Accident or unanticipated events (e.g. lightning, water, fire).
- Improper use or transport.
- Failure to follow the safety and maintenance instructions.
- Other improper treatment or modification of the product.

After the expiration of the warranty period, you may wish to have your product repaired at your own expense. You will be notified of the repair costs in advance.

This warranty gives you specific legal rights, and you may also have other rights which vary from state to state but this warranty is not intended to exceed statutory minimum requirements beyond what is included above.

This warranty does not limit the statutory obligation of the seller arising from any implied warranties. The period of warranty can only be extended in accordance with applicable law.

Neither the service company nor ALDI will assume any liability for data or settings stored on any returned product.

CONTENIDO

1 Garantía	8
1.1 Condiciones de la garantía	8

1 GARANTÍA

Por favor, póngase en contacto con nuestra línea directa de atención por teléfono o correo electrónico antes de retomar el producto. Esto nos permite proporcionar ayuda en caso de posibles errores del operador.

1.1 CONDICIONES DE LA GARANTÍA

Estimado cliente:

La garantía de ALDI es una garantía completa que le ofrece los siguientes beneficios:

PERÍODO DE GARANTÍA

1 año a partir de la fecha de la compra.

COSTOS

Costos: Reparación/sustitución gratis o reembolso.
No hay costos de transporte.

LÍNEA DIRECTA

1-800-372-5715

LÍNEAS TELEFÓNICAS DISPONIBLES

24/7

Para hacer un reclamo bajo la garantía, por favor envíenos:

- El artículo defectuoso junto con todas las piezas, el recibo de compra original y la tarjeta de garantía completada de manera apropiada.

La garantía no cubre los daños ocasionados por:

- Accidentes o eventos imprevistos (por ejemplo, rayos, agua, fuego).
- Uso o transporte inadecuados.
- Incumplimiento de las instrucciones de seguridad y mantenimiento.
- Otro tratamiento o modificación inadecuados del producto.

Después del vencimiento del período de garantía, tiene la posibilidad de mandar a reparar su producto si usted corre con los gastos. Se le notificará por adelantado el costo de reparación.

Esta garantía le otorga derechos legales específicos y es posible que también tenga otros derechos que pueden variar de un estado a otro, pero no tiene como fin exceder los requisitos legales mínimos que aquí se incluyen.

Esta garantía no limita la obligación legal del vendedor derivada de cualquier garantía implícita. El período de garantía solo se puede extender hasta donde lo permita la ley.

Ni la compañía de servicio ni ALDI asumen ninguna responsabilidad por datos o configuraciones que puedan haberse almacenado en cualquier producto retornado.



**IMPORTED & SOLD
EXCLUSIVELY BY**

ALDI
BATAVIA,
IL 60510

**IMPORTADO Y VENDIDO
DE FORMA EXCLUSIVA
POR**

ALDI
BATAVIA,
IL 60510

MADE IN CHINA • HECHO EN CHINA

V01/0925