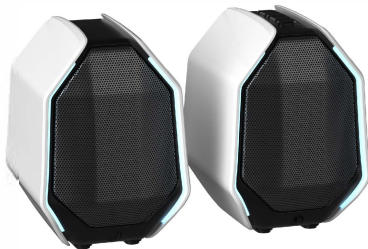


2.0 pairs of boxes User Manual

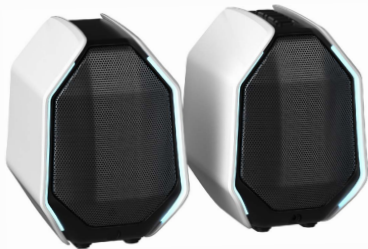
Extraordinary
Through Music



D-ONE

It preserves the gaming
speaker's original character
while incorporating musical
elements.

Please check all accessories before using
the speaker to ensure a complete setup



Power Adapter *1



TYPE-C Cable*1



PS/2 Cable*1



3.5mm audio cable*1

Before use, please familiarize yourself with the instructions for the speaker's buttons and ports



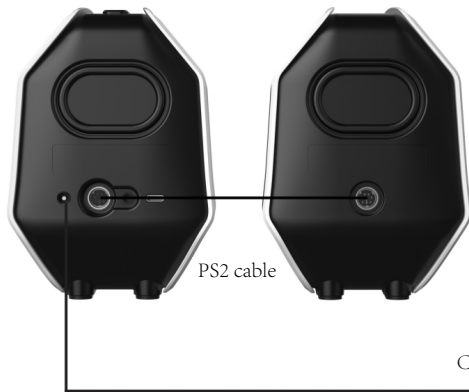
- ① Power on/off mode (Long press power button/Short press input mode toggle)
- ② Volume - (Long press volume down/Short press down button)
- ③ Volume + (Long press volume up/Short press up button)
- ④ Light adjustment (Short press)
- ⑤ EO mode/play/pause (Long press EO mode/Short press play/pause)

Please note: ②③ above refer to the mute function, and the audio playback function can only be activated when using Bluetooth or USB card mode.



- ① Power input
- ② PS2 port (Main speaker)
- ③ 3.5mm audio port
- ④ TYPE-C port
- ⑤ PS2 port (Sub speaker)

Product Usage



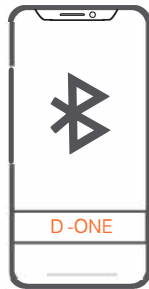
1. Please connect the PS2 cables to the main and sub speakers separately, and connect them to the PS2 ports. The main and sub speakers can be paired to form a 2.0 speaker system.
2. Please connect the power supply to the DC power input port on the back of the speaker.

Long press (Power on/off mode): The speaker will prompt you to select the input mode when powered on.

(The input mode selection will remember your last choice and will default to that input mode when powering on next time.)

Connect the power adapter here

Bluetooth usage



Short press ① (Power on/off mode): Press the button until you hear the "Bluetooth Mode" prompt to enter Bluetooth mode. Open the Bluetooth search on your phone, find the device named D.ONE, and click to connect.

AUX usage



Phone



Pad



PC

① Short press (Power on/off mode): Press the button until you hear the "Line in Mode" prompt, the speaker will enter AUX wired connection mode.

USB sound card usage



Phone



Pad



PC

① Short press (Power on/off mode): Press the button until you hear the "USB Audio Play Mode" prompt, the speaker will enter USB sound card wired connection mode. At this point, you need to connect your computer, phone, or other similar devices to the USB port.

Lighting & Sound EQ Switch



Short press④Switch between audio and lighting changes.

Long press⑤Switch between audio effects EQ.

Esports mode: For gaming use, please use it while playing games.

Music Mode: For music use, please use it while listening to music or for daily use.

Audio Parameters

Output Power: 30W

Frequency Response: 70Hz – 20KHz

Signal-to-Noise Ratio: $\geq 80\text{dB}$

Impedance: 4 Ω

Speakers: Full-range 3 inches * 2

Audio Input: AUX input * 1 / Type-C * 1 / DC input * 1

Power Supply: DC15V2A

Precautions

1. Please do not disassemble, maintain, or modify this product, as it may cause overheating, fire, or electric shock hazards.
 2. Please do not place this product in acidic, corrosive liquids, as it may cause short circuits, damage, and electric shock hazards.
 3. Please do not expose this product to rain, water, oil, dust, or other contaminants, as it may cause damage and electric shock hazards.
 4. Please keep this product away from children or animals.
 5. Please do not use the product with a distorted or modified plug, as it may damage the
 6. product due to the electronic components.
- This product is fragile; please avoid dropping it.

FCC Caution:

This device complies with part 15 of the FCC Rules. Operation is subject to the following two conditions: (1) This device may not cause harmful interference, and (2) this device must accept any interference received, including interference that may cause undesired operation.

Any changes or modifications not expressly approved by the party responsible for compliance could void the user's authority to operate the equipment.

NOTE: This equipment has been tested and found to comply with the limits for a Class B digital device, pursuant to Part 15 of the FCC Rules. These limits are designed to provide reasonable protection against harmful interference in a residential installation. This equipment generates, uses and can radiate radio frequency energy and, if not installed and used in accordance with the instructions, may cause harmful interference to radio communications. However, there is no guarantee that interference will not occur in a particular installation.

If this equipment does cause harmful interference to radio or television reception, which can be determined by turning the equipment off and on, the user is encouraged to try to correct the interference by one or more of the following measures:

- Reorient or relocate the receiving antenna.
- Increase the separation between the equipment and receiver.
- Connect the equipment into an outlet on a circuit different from that to which the receiver is connected.
- Consult the dealer or an experienced radio/TV technician for help.

The device has been evaluated to meet general RF exposure requirement. The device can be used in portable exposure condition without restriction.