

PARTYLITE™

PL\_SmartHomePlug-InRefillLeaflet\_final

Date:	December 18, 2024
Designer:	Dana Lee
Season:	S25
Brand:	Smart Home Plug-In
Part #/SKU:	
Description:	Smart Home Plug-In Refill Leaflet
# of Colors:	1
Coating/Finish:	None
Dieline:	
Material:	White paper stock
Blank Size:	268 mm x 312mm
Finish size:	67mm x 78mm
Outsourced:	Yes

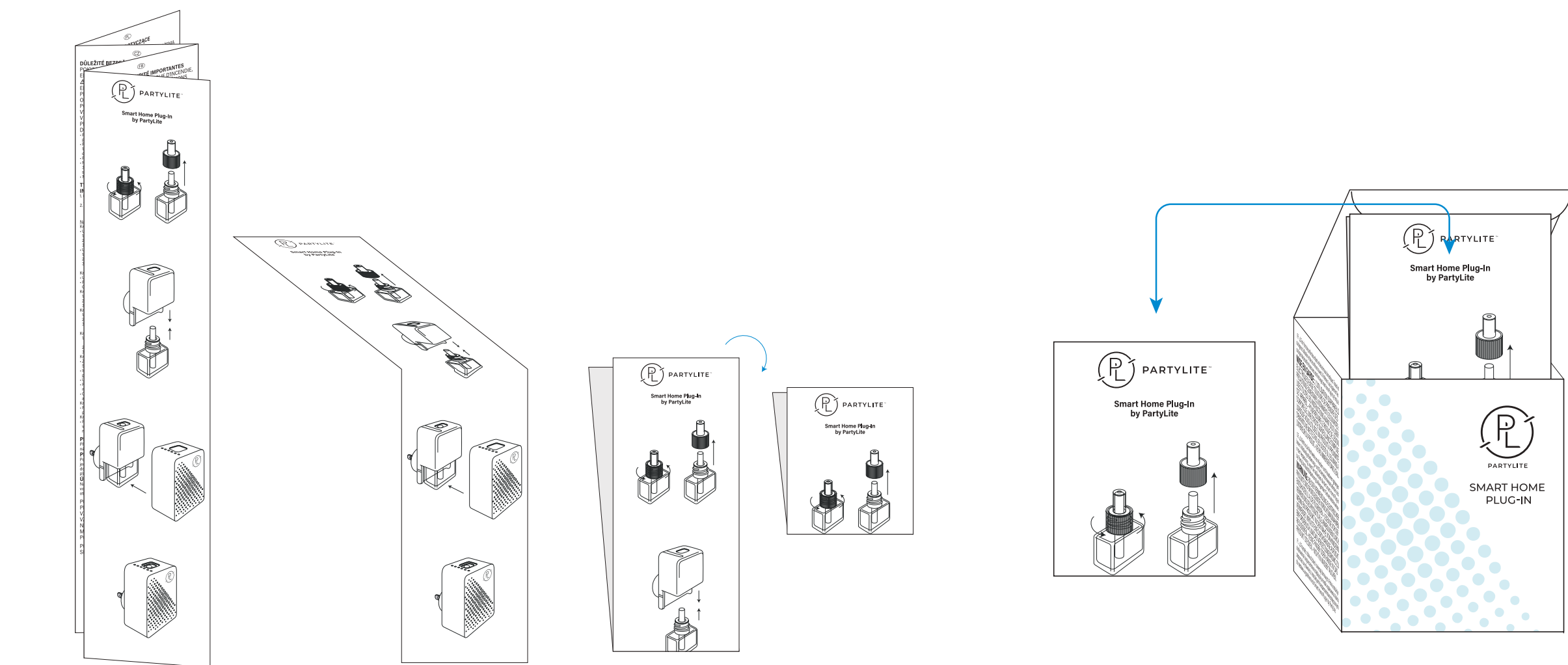
This design drawing is the exclusive property of

**PARTYLITE WORLDWIDE, INC.**

The information being disclosed to you herein is confidential.

You may not copy it, give it to a third party, or use it for any other purpose without express written consent. It must be returned to us upon demand.

- Black @ 100%
- K/O = White material



BACK PANEL

OUTSIDE

FRONT PANEL

78mm

312mm

This device complies with Part 15 of the FCC Rules. Operation is subject to the following two conditions: (1) this device may not cause harmful interference, and (2) this device must accept any interference received, including interference that may cause undesired operation.

Changes or modifications to this unit not expressly approved by the party responsible for compliance could void the user's authority to operate the equipment.

NOTE: This equipment has been tested and found to comply with the limits for a Class B digital device, pursuant to Part 15 of the FCC Rules. These limits are designed to provide reasonable protection against harmful interference in a residential installation. This equipment generates uses and can radiate radio frequency energy and, if not installed and used in accordance with the instructions, may cause harmful interference to radio communications.

However, there is no guarantee that interference will not occur in a particular installation. If this equipment does cause harmful interference to radio or television reception, which can be determined by turning the equipment off and on, the user is encouraged to try to correct the interference by one or more of the following measures:

- Reorient or relocate the receiving antenna.
- Increase the separation between the equipment and receiver.
- Connect the equipment into an outlet on a circuit different from that to which the receiver is connected.
- Consult the dealer or an experienced radio/TV technician for help.

PARTYLITE™

www.partylite.com

© PartyLite

EN

IMPORTANT SAFETY INSTRUCTIONS

INSTRUCTIONS PERTAINING TO A RISK OF FIRE, ELECTRIC SHOCK, OR INJURY TO PERSONS  
⚠ **WARNING:** WHEN USING ELECTRIC PRODUCTS, BASIC PRECAUTIONS SHOULD ALWAYS BE FOLLOWED, INCLUDING THE FOLLOWING: A) READ ALL THE INSTRUCTIONS BEFORE USING THE PRODUCT; B) TO REDUCE THE RISK OF INJURY, CLOSE SUPERVISION IS NECESSARY WHEN A PRODUCT IS USED NEAR CHILDREN. C) DO NOT PUT FINGERS OR HANDS INTO THE PRODUCT.

- This is not a toy and is not intended for use by children. For adult use only.
- For safe use, plug into properly functioning 120 volt wall outlets in ventilated areas where the unit cannot come into contact with bed covers or other fabric.
- If using a GFCI outlet, test on a regular basis.
- Do not use with extension cords, multi-plugs or 3-prong adapters. Do not plug anything else into the outlet at the same time as the warming unit.
- Do not immerse in water.

SAVE THESE INSTRUCTIONS

INSTALLATION:

1. Unscrew cap from Smart Home Plug-In Refill and insert into warmer. See instructions included with the Refill.

2. Plug warmer into a 120 Volt outlet in an UPRIGHT position. Rotate warmer's electrical plug if needed. Do not plug in horizontally.

Setting up your Smart Home Plug-In by PartyLite App

Step 1: Download the App

- iPhone Users:

1. Open the App Store.

2. Search for "Smart Home Plug-In by PartyLite".

3. Tap Get to download and install the app.
- Android Users:

1. Open the Google Play Store.

2. Search for "Smart Home Plug-In by PartyLite".

3. Tap Install to download and install the app.

Step 2: Prepare Your Smartphone

- Ensure that Bluetooth is turned on.
- GPS may be required when using the purchase feature in the app.

Step 3: Open the App and Select Language

1. Open the app after installation.

2. Choose your preferred language.

3. Tap OK to proceed.

Step 4: Connecting the Smart Home Plug-In by PartyLite

1. Plug in the Smart Home Plug-In by PartyLite device into the wall.

2. Tap the Bluetooth icon in the app to scan for the device.

3. Once the Smart Device is found, tap ADD to connect.

Step 5: Personalizing Your Device

1. Rename the Device: Give your Smart Device a personalized name, such as "Living Room" or "Kitchen".

2. Choose Color: Select a color for your Smart Device (optional).

3. Tap SAVE to confirm the settings.

Step 6: Basic Operations via App

- Power On/Off: Use the app to turn the Smart Home Plug-In by PartyLite on or off.
- Fragrance Intensity: Adjust the intensity levels (Low, Medium, High) as per your preference.
- Refill Level: Monitor the fragrance refill levels.
- Reset Refill: After inserting a new refill, tap the Reset Refill option in the app.
- Smart Scheduling: Set timers and schedules to automate the device.

Step 7: Reconnecting the Device

- If the connection is lost, tap Reconnect in the app to re-establish the Bluetooth connection.

Step 8: Refill Change

- When the Refill Level indicator shows low, replace the refill and tap Reset Refill in the app to confirm.

OPERATION:

Please read Important Safety Instructions. Use only with Smart Home Plug-In by PartyLite Refill.

MOVING/STORAGE:

When unplugged, separate fragrance refill from unit and store Refill in an UPRIGHT position. Do not place Smart Home Plug-In Refill or cap on painted, finished or plastic surfaces.

MAINTENANCE:

Fragrance oil may collect on Smart Home Plug-In unit over time. To clean, unplug unit and wipe with a dry cloth. Wash hands after handling.

CAUTION: DO NOT USE IN SMALL, CONFINED PET AREAS WITHOUT ADEQUATE VENTILATION. ALWAYS KEEP UNIT AND REFILL IN AN UPRIGHT POSITION. IF REFILL IS PLACED ON ITS SIDE OR UPSIDE DOWN, FRAGRANCE OIL MAY LEAK AND DAMAGE THE OUTLET OR SURFACES.

CAUTION: IRRITANT. KEEP OUT OF REACH OFF CHILDREN AND ANIMALS. AVOID CONTACT WITH EYES, SKIN AND CLOTHING.

Smart Home Plug-In by PartyLite

INSIDE

78mm

312mm

268mm

67mm