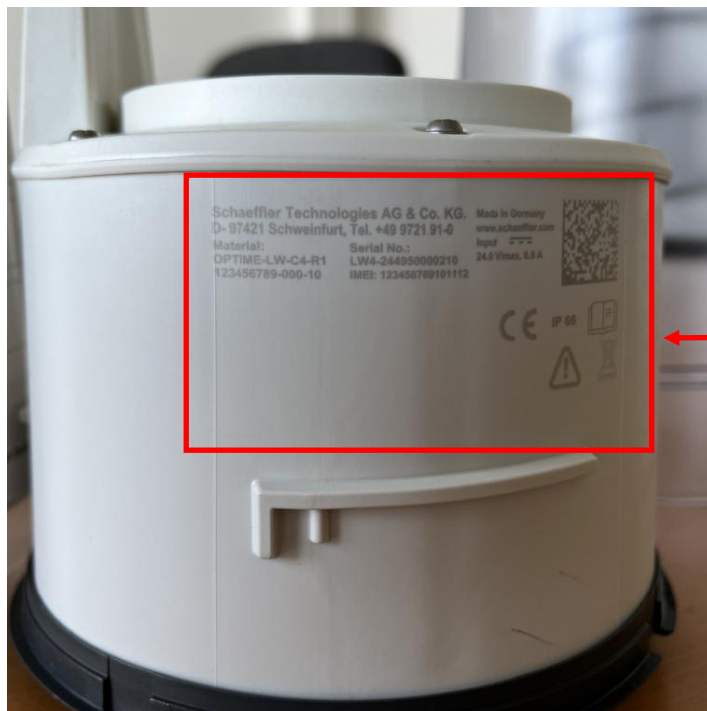


Schaeffler Technologies AG & Co. KG
Georg-Schäfer-Straße 30 · 97421 Schweinfurt

To Whom it may concern

Label Location

3/10/2025



Label information lasered on the rear of the equipment.

The front view is where the 4 outlets are located, though which the lubricant is released

Figure 1: Rear view of the Main Body containing the electronics and the motor

CONFIDENTIAL

Schaeffler Technologies AG & Co. KG

Georg-Schäfer-Straße 30, 97421 Schweinfurt, Landline +49 9721 91 0, Fax +49 9721 91 3435, www.schaeffler.com, Registered office: Herzogenaurach, Court of registry: AG Fürth, Commercial register number A 10129, Komplementärin: Schaeffler AG, Herzogenaurach, AG Fürth, HRB 14738 · Vorsitzender des Aufsichtsrats: Georg F. W. Schaeffler · **Board members:** Klaus Rosenfeld (Vors.), Claus Bauer, Dr. Astrid Fontaine, Andreas Schick, Jens Schüler, Thomas Stierle, Uwe Wagner, Sascha Zaps, Matthias Zink · **Banking Information:** Commerzbank Nürnberg, BIC DRESDEFF760, IBAN DE35 7608 0040 0121 0464 00, VAT-ID DE 291 636 029

Container for the lubricant

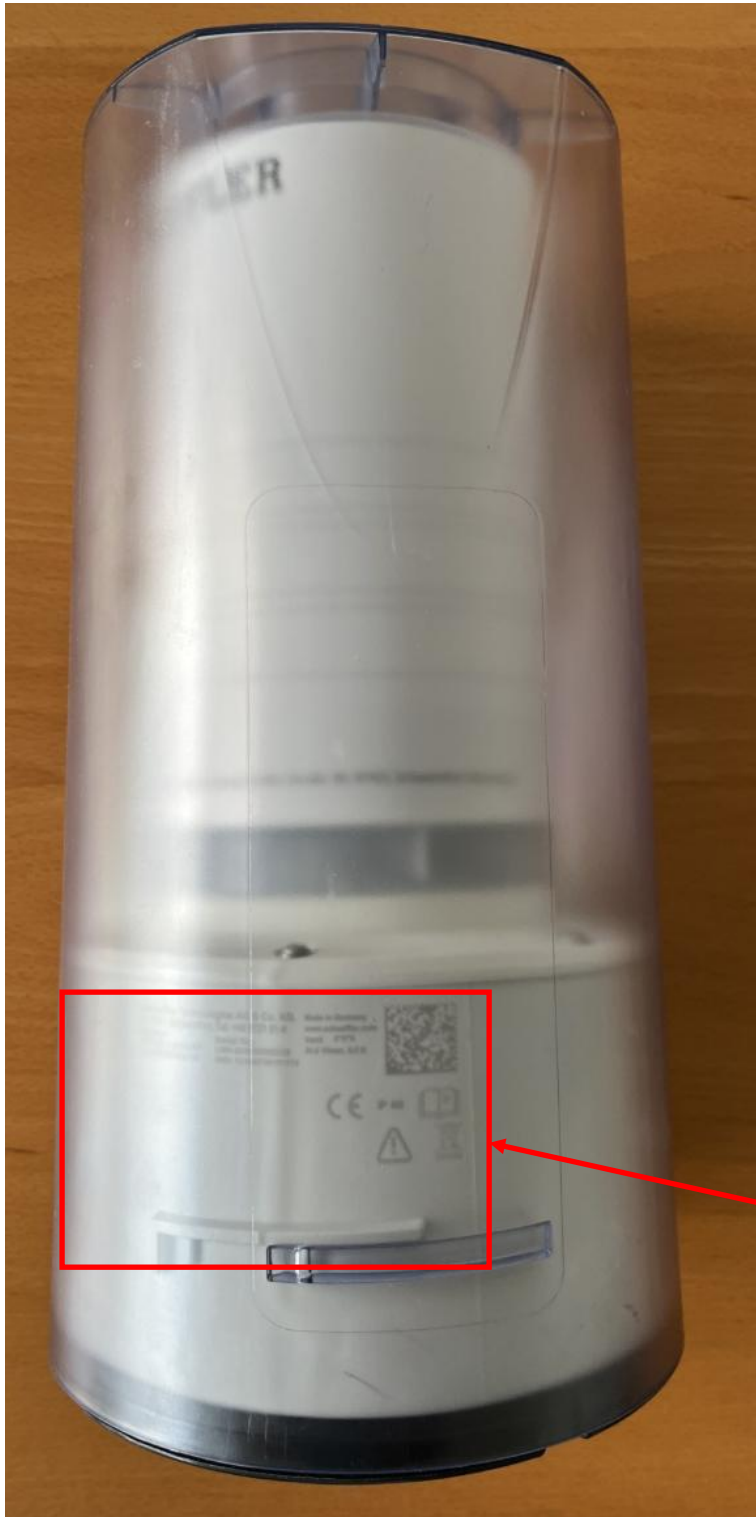
Bonnet; protects the equipment from external forces and contribute to provide environmental rating

Page 2 of 4



Main body: contains electronics and motor

Label is lasered here



Label is lasered on the rear of the equipment. The front of the equipment is where the 4 outlets (releasing the lubricant) are located

Figure 2: complete device

The label is lasered on the rear view



This is the front view, showing where the outlets through which the lubricant is released.

The surface, where the label is lasered is on the opposite side, on the back (Rear view)