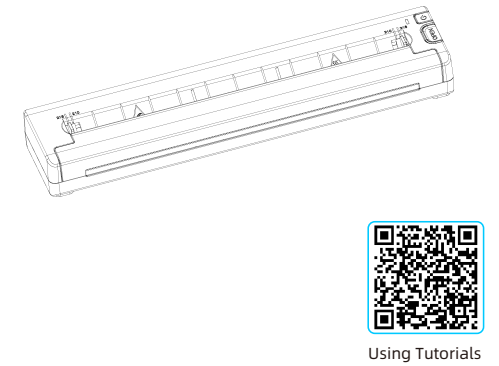


Quick User Guide

SK30 Portable Printer

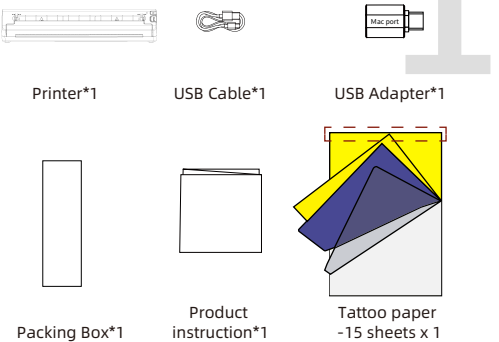


Using Tutorials

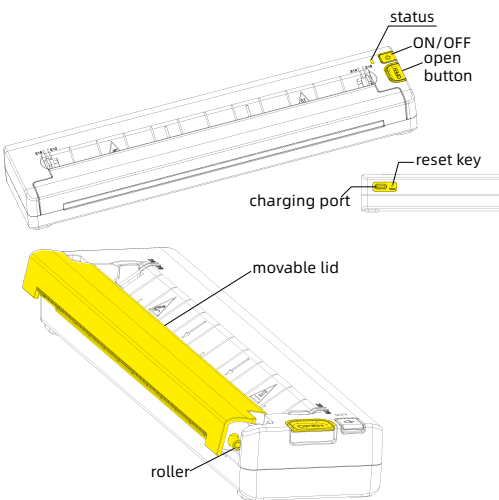
English

1.Product Introduction

1.1. packing list



1.2 Introduction to Printer Components



1.3 Printer product specifications

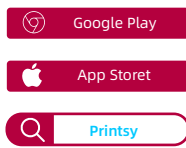
Product name	Portable Printer
product model	SK30
Printing technology	Line thermal printing
Effective printing width	208mm
Media width	216mm(max)
Supported consumables	Thermal receipt paper Thermal tattoo paper
Print speed	15mm/s(max)
Printing density	Switchable, level0-5
Printing resolution	203dpi

Print head service life	50KM
Communication,interface	Bluetooth
Product size	265.5*58.5*31mm (10.45x2.30x1.22inch)
Power input	5V=2A
Power supply method	Lithium battery USB
Supported operating system	Android IOS
Bar code	1D bar code & 2D bar code
Operating temperature	5°C-50°C
Storage temperature	- 20°C-60°C
operating humidity	35%-85%(Non condensation)
Storage humidity	10%-90%(Non condensation)

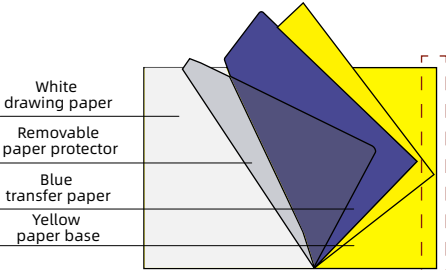
2.Quick application

2.1Download the application

Search "Printsy" on APP Store Or Google Play to download the App.Or scan the QR code below to download.



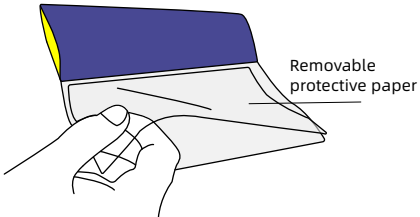
2.2. Introduction to Tattoo Paper



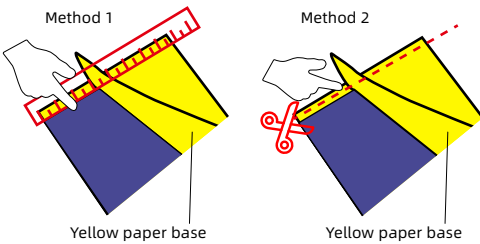
Stick paper on top of the paper. Don't tear it off.

2.3. Preparation before use

1. Take out the tattoo paper and remove the Removable paper protector

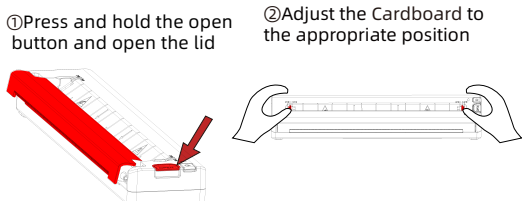


2.Use a ruler or scissors to cut off the yellow backing paper along the adhesive area at the top.

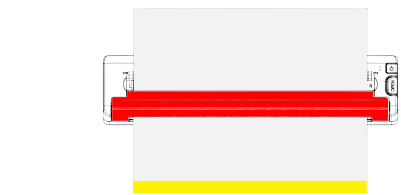


Carefully cut to maintain the integrity of the bonding area.

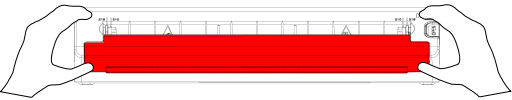
2.4. Paper loading instructions



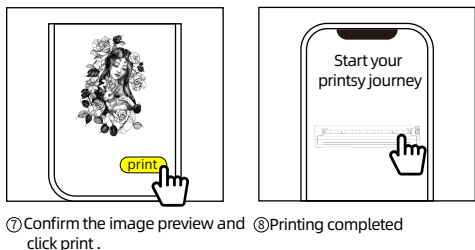
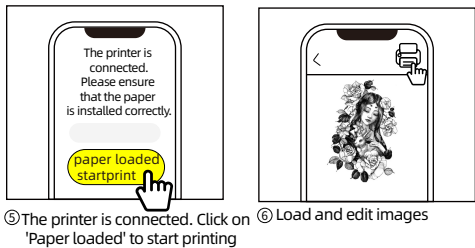
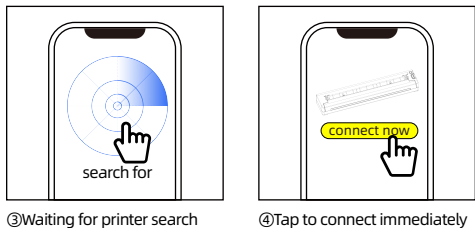
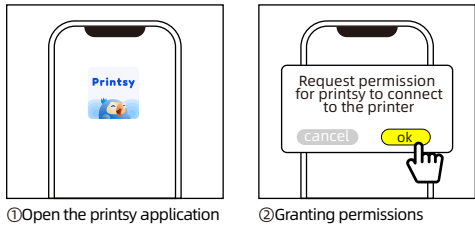
③Place the printer face up and flat on the ground, in the same direction as the paper outlet. ensure Tattoo paper covers the sensor.



④Return the top cover to its original position and press both ends until you hear a click, indicating that the coverhas been safely closed.



2.5. Mobile User Application Guide



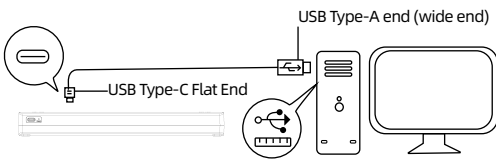
2.6.Mac Installation User Guide

Note:Bluetooth connectivity is not supported on allPCs.

Scan the QR code on the right for the video tutorial:
<https://sinmark.bcdn8.com/uploadfile/202505/41163045655b1f6.zip> (Mac drive)
<https://sinmark.bcdn8.com/uploadfile/202505/017b1edb9dfcfb1.zip> (Win driver)

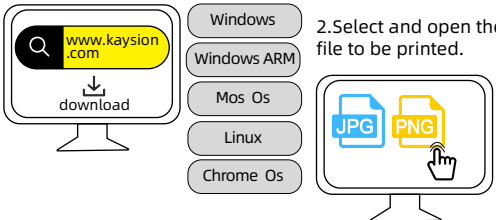
Note:Please enter the link with letters and numbers in lowercase only.

Power on your printer.
Connect the printer to your computer with the USB Cable

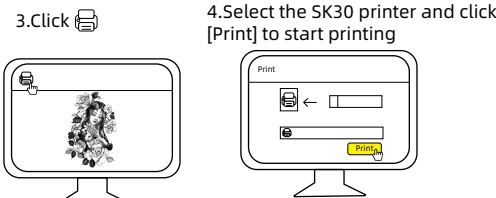


Note:Plug the USB end of the cable into the printer's Type-C port,then connect the USB end to your Mac using an adapter.It won't work if theadapter is upside down.

1.Visit www.sinmark.com/drivers/to download and install the driver program.



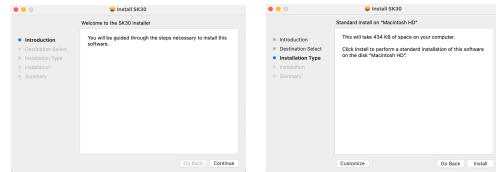
① The file formats supported by the printer include JPG, PNG, etc.



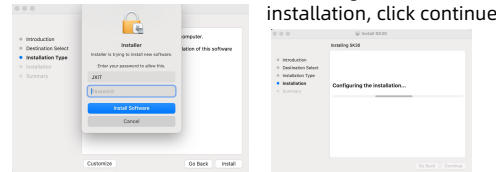
If your computer has a Type-C interface, you can use the included adapter to convert the interface. The USB-end of the adapter needs to be plugged into the computer side. The adapter is unidirectional, and inserting the Type-C end of the adapter into the printer end will result in charging failure or abnormal data transmission.

Visit this link to get the latest macOS driver:
<https://sinmark.bcdn8.com/uploadfile/202505/41163045655b1f6.zip>

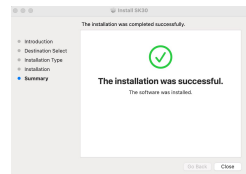
1.Download and install the driver.click "CONTINUE" start install 2.Perform SK30 "Install"



3.Add the printer installation program to theMACOS device, please enter the startup password



5.Installation completed successfully.

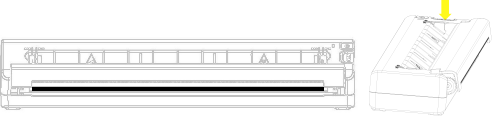


3.Cleaning and maintenance

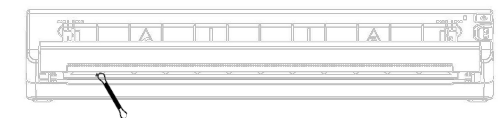
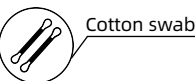
①Before performing any cleaning or maintenance, please disconnect the power supply of the printer

If the printout is unclear or shows white lines ,please clean the print head.

1.Power off the printer.
2.as shown in the figure,press open button to open movable lid assembly. then,remove any paper from.



3.Rotate it to the required angle. use a cotton cloth or cotton swab dipped in medical alcohol to clean the printer head.wait 1 to 2minutes before using the printer again.



4.Charging instructions

1. Please prepare a power adapter (DC 5V/2A) with Type-A port by yourself.

2. Insert the Type-C end (flat end) of the USB cable into the Type-C charger port of SK30, and insert the Type-A end (wide end) into the Type-A port of the power adapter.

3. After connecting the printer to a power outlet using a power adapter, please check the instructions

Lamp status: The white light is flashing while charging, the white light is always on when fully charged, in standby mode - the green light is always on, Bluetooth is connected - the blue light is always on, the printer is abnormal (paper shortage, lid opening, overheating) - the red light is always on.

4.To ensure quick use, please charge the printer for at least 20 minutes. To complete the charging, please wait 4 hours or until the indicator light turns green.

5. As the printer may generate heat during charging, please avoid placing it on materials such as cotton or linen.Once the battery is fully charged, please unplug the charger immediately.

5.Additional explanation

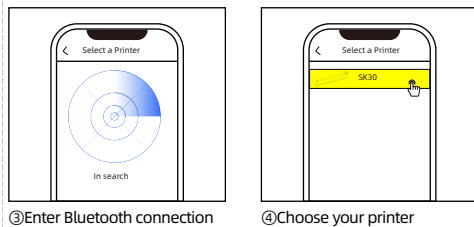
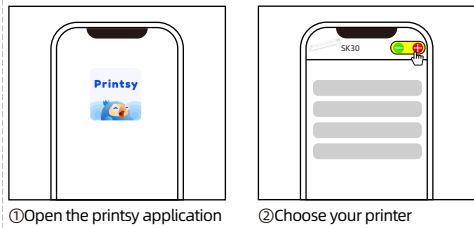
5.1command button

Diagram	Button	Operating	Features
	ON/OFF button	Press and hold for 1seconds	/
		single click	Feed a distance on paper
		double click	Print self-test page
	Open button	Press down	Open the lid
	Reset	In the crash state, press and hold the button for 1 seconds	Restart

5.2 LED

state	significance	Recommended actions
White light flashing	charge	/
The white light is always on	be filled with	/
Green light always on	In standby mode	/
The blue light is constantly on	Bluetooth connected	/
The red light is always on	no paper No cover overheat	Place paper Lid wait a moment

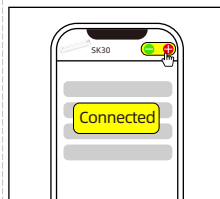
6.More connection methods



③Enter Bluetooth connection and search for printer.

④Choose your printer

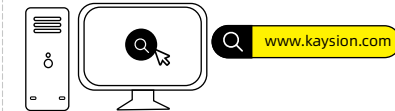
Turn on Bluetooth permission to quickly locate and connect to the printer.



③device connected

7.Access detailed online guide

Method 1:
Visit www.sinmark.com/drivers/for detailed online guides, video tutorials, and frequently asked questions.



Method 2: Scan the QR code.

You can use the camera on your phone, the built-in QR code scanning feature in your browser, or a dedicated QR code scanningpage to scan.



Due to Safari browser on Apple devices not supporting direct QR code scanning, please use the built-in QR code on the device to scan the code.

8.Safety Notices

The software and drivers have been tested for security and will not leak your personal privacy,please feel free to use them.

- To prevent overheating and scalding!
- please do not touch to prevent cutting by sharp edges!
- please do not touch the products not suitable for children!

FCC Caution

Information to User

1, Note: This equipment has been tested and found to comply with the limits for a Class B digital device, pursuant to part 15 of the FCC Rules. These limits are designed to provide reasonable protection against harmful interference in a residential installation. This equipment generates, uses and can radiate radio frequency energy and, if not installed and used in accordance with the instructions, may cause harmful interference to radio communications. However, there is no guarantee that interference will not occur in a particular installation. If this equipment does cause harmful interference to radio or television reception, which can be determined by turning the equipment off and on, the user is encouraged to try to correct the interference by one or more of the following measures —Reorient or relocate the receiving antenna. —Increase the separation between the equipment and receiver. —Connect the equipment into an outlet on a circuit that differs from that to which the receiver is connected. —Consult the dealer or an experienced radio/TV technician for help.2, Important: Change or modifications not expressly approved by the manufacturer responsible for compliance could void the user's authority to operate the equipment.

15.19 Labeling requirements.

This device complies with part 15 of the FCC Rules. Operation is subject to the following two conditions: (1) This device may not cause harmful interference, and (2) this device must accept any interference received, including interference that may cause undesired operation.

15.21 Information to user.

Any Changes or modifications not expressly approved by the party responsible for compliance could void the user's authority to operate the equipment.

FCC RF Radiation Exposure Statement:

- 1. This Transmitter must not be co-located or operating in conjunction with any other antenna or transmitter.
- 2. This equipment complies with RF radiation exposure limits set forth for an uncontrolled environment.
- 3. This equipment should be installed and operated with minimum distance 20cm between the radiator and your body.