



Bellababy

User Manual

BLA8043/BLA8036



PLEASE DOWNLOAD
SMART LIFE APP



Manufacturer name: Ningbo Huiyoo Baby Products Co., Ltd.
Manufacturer address: 523# CiZhang Road, Zhangqi industrial Area,
Cixi City Zhejiang Province, China
Importer: Bellababy Medical Devices Inc
Address of Importer: 30 N Gould St Ste R Sheridan, WY 82801 USA
Email: Service-US@bellababy-med.com
Service-JP@bellababy-med.com

(UK)REP U.K RUPEX LTD
326 CLEVELAND ROAD, LONDON E19 2AN
Tel: +44 845 257 6082
Email: Service-EU@bellababy-med.com
(EC)REP ELE HOME SARL
366 ter rue de Vaugirard
75015 Paris
Tel: +44 845 257 6082
Email: Service-EU@bellababy-med.com



Follow Bellababy



Message Bellababy



READ THE INSTRUCTIONS
CAREFULLY BEFORE USE

(QUESTION?)

Contact with Service-US@Bellababy-med.com
Service-EU@Bellababy-med.com
Service-JP@Bellababy-med.com

Catalogue

1.Safety Precautions	01
2.Lithium Battery Caution	02
3.APP Download & Use	03
4.Device Operation	06
5.The Parts	07
6.How to Assemble	08
7.Cleaning & Maintaining	10
8.Troubleshooting	11
9.Product Parameters	12
10.Symbols & Meanings	12
11.Warranty & Support	13

Safety Precautions

- Do not use while bathing, showering or sleeping.
- Do not rinse or immerse the device in water.
- Do not wash, sterilize, heat the device, tubing and charging cord.
- After sterilizing, ensure the parts have 20 mins cooling before use. Otherwise that may result permanent damage.
- Ensure the tubing has not kink before or during use.
- Do not place the device near bathtub, hand sink that has risk of falling in water.
- Keep the device away from fire and high temperature environment. Ensure kids and babies can not touch it.
- Fully recharge the device, sterilize and dry the parts before the first use.
- Set the mode and strength level according to your feeling and milk flowing. New moms set the suction from weak to strong gradually.

Kind Reminder:

- The device is designed to help moms pump milk out but not produce milk .
- If your breast has no milk or has mammary gland blockage, Please consult your doctor before using a breast pump.

Lithium Battery Caution

- Lithium battery built in, do not dismantle, strike or put in fire.
- Keep it away from water, fire and high temperature environment.
- Stop using when the battery is swollen.
- Do not replace the battery by yourself in case of damage, fire or personal injury.
- Dispose the battery base on your local environmental protection law and regulation.

Charging:

- Use the original adapter (5V,2A) and charging cord to charge the device.
- Incompatible adapter may cause irreversible damage on the device.
- There should be people present when charging the device, and unplug it in time when fully charged.
- Recharging the device 1 time per month at least to keep the battery active when leave the device unused for long time.

APP Download & Install & Operation

• 1.APP Download

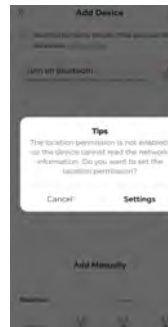


PLEASE DOWNLOAD
SMART LIFE APP

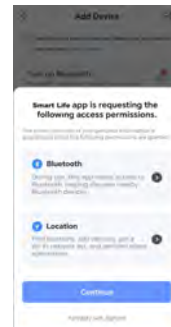


Scan this QR code to download APP from browser or Google Play.

• 2.APP Connection

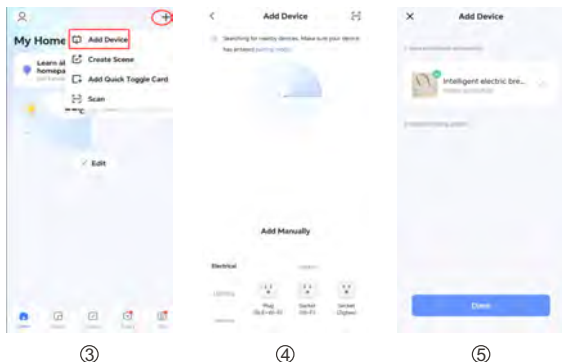


①



②

- 1.Enable bluetooth and location on your phone.
- 2.Allow the access permissions to Smart Life APP.



3. Click the + and then Add Device.
4. Turn on your breast pump, then APP will scan to find the device automatically.
5. Find and connect with the device successfully.

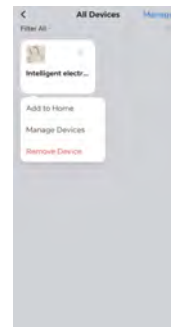
Matters need attention

1. The pump is turn on.
2. Your phone has enabled bluetooth and location .
3. Your phone has allowed the access permissions bluetooth and location for the Smart Life APP.
4. If still can not scan to find the device on APP, please restart your phone and the breast pump. Or contact with Bellababy Service Team for assistance.

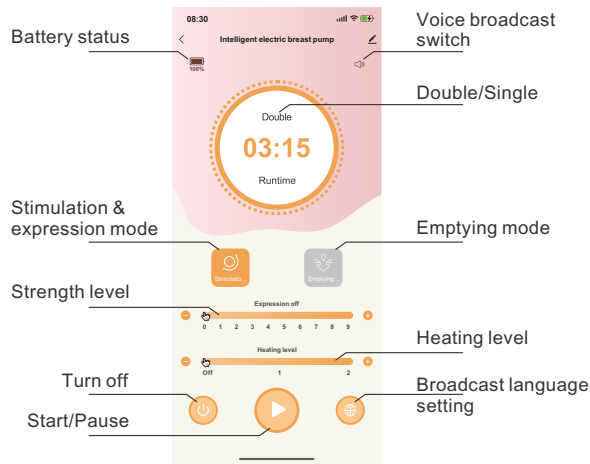
• 3.How to remove the device from APP

Method 1: Tap and access All Devices, find the breast pump icon, press and hold for seconds, then click the Remove Device.

Method 2: Click the power button on the device for 10 times.



4.APP Operation



Device Operation



NOTE: Device turn off automatically after left 5 mins unused or after 30 mins use.

1. Press and hold the power button for 3-5 seconds to turn On/Off.

+ : Level up, pull the button to **+** once, the strength go up 1 level.

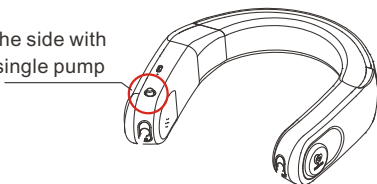
— : Level down, pull the button to **—** once, the strength go down 1 level.

:: : Pumping mode switch, pull the button to **::** to switch stimulation/expression mode and emptying mode.

〰 : Heat setting, pull the button to **〰** to set the heating level.

Single Side/Double Side Use

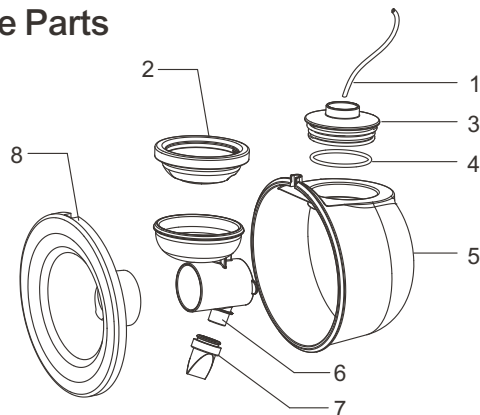
Connect to the side with button as a single pump



Single Mode: Support the side with power button for single only, and unplug the tubing on another side.

Double mode: Plug tubing on two sides, device detect it to double mode automatically.

The Parts

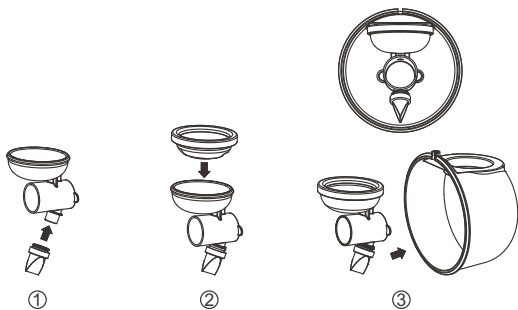


Part No.	Part Name	Material	Quantity
1	Tubing	Solid Silicone	2
2	Membrane	Liquid Silicone	2
3	Membrane lid	PP	2
4	Ring on membrane lid	Solid Silicone	4
5	Cup	PP	2
6	Connector	PP	2
7	Duckbill valve	Liquid Silicone	4
8	Flange pad	Liquid Silicone	2
9	Motor	ABS+Silicone	1
10	Adapter	—	1
11	Charging Cable	—	1

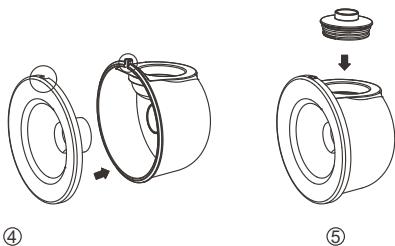
Note:

- Tubing can be cut to the suitable length by yourself.
- Tubing, Membrane, Duckbill valve and Flange pad are consumable parts.
- Please replace them regularly, usually replace once per 1-3 month base on use frequency.
- These parts can be purchased on www.amazon.com/bellababy or your local Bellababy Amazon store.

How to assemble

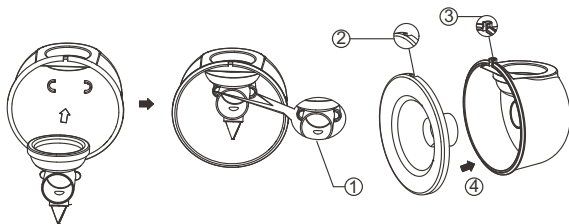


- 1.set the valve.
- 2.set the membrane.
- 3.set the connector in the cup.



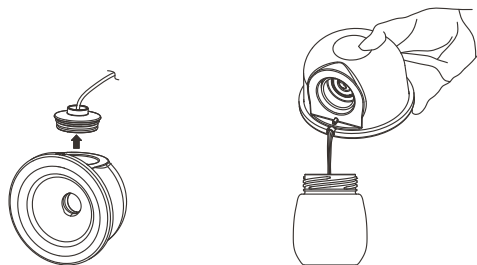
- 4.set the flange pad attached around the cup.
- 5.set the membrane lid.

• Matters need attention during assembling



- 1.The ears on the connector should be put in the grooves inside the cup.
- 2.The cut on the flange pad should point to the cup opening which is for pouring milk.
- 3.The cup opening.
- 4.set the flange pad attached around the cup firmly, no gap.

• How to pour milk out



- 1.Remove the membrane lid first.
- 2.Pour milk into bottle or storage bag.

Cleaning & Maintaining

Part No.	Part Name	Cleaning	Sterilizing	Dry
1	Tubing	Wipe with wet tissue	×	Air
2	Membrane	Wash or rinse	Steam,UV, MicroWave	Air,Dryer
3	Membrane lid	Wash or rinse	Steam,UV, MicroWave	Air,Dryer
4	Ring on membrane lid	Wash or rinse	Steam,UV, MicroWave	Air,Dryer
5	Cup	Wash or rinse	Steam,UV, MicroWave	Air,Dryer
6	Connector	Wash or rinse	Steam,UV, MicroWave	Air,Dryer
7	Duckbill valve	Wash or rinse	Steam,UV, MicroWave	Air,Dryer
8	Flange pad	Wash or rinse	Steam,UV, MicroWave	Air,Dryer
9	Motor	Wipe with wet tissue	×	Air

- 1.Recharging the device 1 time per month at least to keep the battery active when leave the device unused for long time.
- 2.Do not wash and sterilize the tubing and motor.
- 3.Ensure every part is dry enough before use in case of sucking condensation in the motor and result permanent damage.
- 4.Clean and sterilize the parts before first use.

Indicator Light & Troubleshooting

Light Color	Device Off	Device Off and Charging	Device Off and fully charged	Device On but not paired with APP	Device On and paired with APP	Battery too low to turn on	Battery drained
White	Off	Off	Off	Flash	Stay on	Off	Off
Red	Off	Flash	Stay on	Off	Off	Flash	Off

Troubleshooting

Problem	Troubleshooting
Nipple Pain	<ol style="list-style-type: none"> 1.Ensure the flange size fits your nipple 2.Place your nipple in the middle of the pad channel 3.Use nipple cream 4.It is a adjustment period for new mom
Breast Pain	<ol style="list-style-type: none"> 1.Hot compress your breast before pumping 2.Consult your doctor if it is mammary gland blockage 3.It is a adjustment period for new mom
Device not working	<ol style="list-style-type: none"> 1.Check the battery 2.Ensure socket is powered,plug in to charge try to turn it on 3.If it can not be charged or turned on,contact with Bellababy service
No suction	<ol style="list-style-type: none"> 1.If device sounds normal,check tubing kinks or not 2.Check duckbill valve, membrane,ensure they are not ripped 3.Check if the flange pad is assembled to the cup correctly and firmly,no any gap 4.If device sounds unnormal,contact with Bellababy service 5.Check if the strength level is 0 or paused
Feel suction but no milk	<ol style="list-style-type: none"> 1.Breast has no milk inside 2.Hot compress your breast before pumping 3.Consult your doctor if it is mammary gland blockage 4.It is a adjustment period for new mom.Start from the stimulation mode to adapt it gradually
Can not be charged	<ol style="list-style-type: none"> 1.Use the original adapter and cable 2.Ensure the socket is powered 3.Plug in correctly and firmly
Other Problem	Contact at: US&CA:Service-US@Bellababy-med.com EU:Service-EU@Bellababy-med.com OA&JP:Service-JP@Bellababy-med.com

Product Parameters

Model	BLA8043/BLA8036
Item name	Intelligent electric breast pump
Cup capacity	180ml
Input	5V,2A
Battery capacity	3000mAh,11.1wh
Battery voltage	3.7V
Suction range	30~300 mmHg

Symbols & Meanings



Product serial number(The first 5 digits are the year and month,and the last 6digits are the serial number.)



Manufacturer name and address



Please refer to the instruction manual



Waste electrical materials should be sent to a dedicated collection point for recycling

IP22 The level of dust and water repellency



Applied parts:Type BF



DC symbol

Warranty

Part No.	Part Name	Warranty
1	Tubing	1 month
2	Membrane	NA
3	Membrane lid	3 month
4	Ring on membrane lid	NA
5	Cup	3 month
6	Connector	3 month
7	Duckbill valve	NA
8	Flange pad	1 month
9	Motor	1 Year

FCC Caution.

This device complies with part 15 of the FCC Rules. Operation is subject to the following two conditions:

- (1) This device may not cause harmful interference, and
- (2) this device must accept any interference received, including interference that may cause undesired operation.

Any Changes or modifications not expressly approved by the party responsible for compliance could void the user's authority to operate the equipment.

Note: This equipment has been tested and found to comply with the limits for a Class B digital device, pursuant to part 15 of the FCC Rules. These limits are designed to provide reasonable protection against harmful interference in a residential installation. This equipment generates uses and can radiate radio frequency energy and, if not installed and used in accordance with the instructions, may cause harmful interference to radio communications. However, there is no guarantee that interference will not occur in a particular installation. If this equipment does cause harmful interference to radio or television reception, which can be determined by turning the equipment off and on, the user is encouraged to try to correct the interference by one or more of the following measures:

- Reorient or relocate the receiving antenna.
- Increase the separation between the equipment and receiver.
- Connect the equipment into an outlet on a circuit different from that to which the receiver is connected.
- Consult the dealer or an experienced radio/TV technician for help.

The device has been evaluated to meet general RF exposure requirement. The device can be used in portable exposure condition without restriction.