



Thank you for choosing our product!
Please read the instruction manual carefully before use.

Contents

Contents	1
Preface	1
Product Features	2
Component Introduction	3
User Guide	4
Connection to the App	7
Safety Precautions	8
Cleaning and Maintenance Guide	9
Troubleshooting	10
Product Specifications	10
Customer Support Information	10

Preface

Thank you for purchasing IntreLife electric gooseneck kettle. Before using this product, please read the user manual carefully. This manual provides detailed information about the structure, functions, usage, and maintenance of the kettle. Please keep it in a safe place for future reference.

Product Features

1.Ministure Curved Design: Elegant and luxurious appearance, easy to clean, and absolutely hygienic.

2.Advanced Temperature Control: The electric kettle is equipped with a cutting-edge combination thermostat that utilizes advanced technology, ensuring compliance with international electrical standards. Additionally, the body is made from food-grade stainless steel, adhering to national hygiene standards for maximum safety and health.

3.Dry-Bol Protection: The dry-bol protection feature is an important safety characteristic of electric kettles. It can detect whether there is water in the kettle; if the kettle heats up without any water, the dry-bol protection function will automatically cut off the power, thus preventing overheating and potential fire hazards, ensuring safe usage.

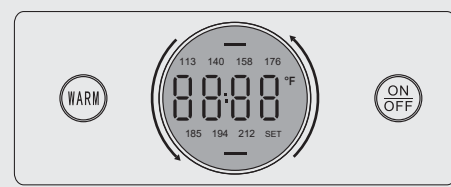
4. Advantages: The water boiled in the electric kettle is truly boiling water, making it ideal for brewing tea and coffee. It can quickly boil a kettle of water in just 3-5 minutes, saving time and meeting the demands of fast-paced homes and offices.

5.Perfect Gift Choice: The product is visually appealing and uniquely functional, making it an excellent gift for friends and family.

Component Introduction



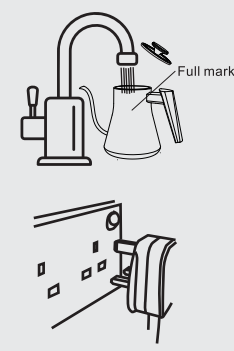
Operation display panel



Description:

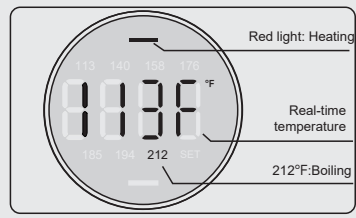
- ON/OFF Button: Water boiling touch button. Touch once to start boiling water, touch again to cancel boiling.
- Knob Switch: In boiling or keeping warm mode, rotate left to decrease 1 degree, rotate right to increase 1 degree.
- WARM Button: Touch once to activate the keep warm function (or heat to the warm temperature), and continue touch shows you to select different warm temperatures. After the ON/OFF boiling function is activated, touching this button again will enter the keep warm function (first boil the water, then maintain it at the set temperature).
- Multi-Functional LED Display: The red strip indicates the current heating status, while the green strip indicates that the kettle is in keeping warm mode. The four-digit digital display shows the water temperature, with six commonly used warm temperature settings on the top and bottom. 212°F indicates boiling. SET indicates that the current warm temperature is the user-set temperature.
- WiFi indicator: This is an optional function. When the machine is equipped with WiFi, the indicator will flash to indicate network configuration upon power-up, and it will remain lit to indicate that the network connection is normal.

User Guide



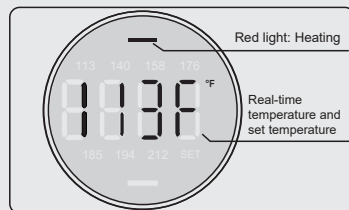
- **Keep the Kettle Dry:** When filling the kettle with water, try to avoid letting water flow onto the exterior of the kettle to ensure safety and extend the kettle's lifespan.
- **Control Water Level:** When adding water, be careful not to exceed the maximum water level indicator to prevent overflow during boiling.
- **Secure the Lid:** After adding water, ensure the lid is tightly closed and close the kettle back on to base securely.
- **Connect the Power:** Insert the power plug into a dedicated power outlet; you will hear "beep" sound, indicating that the kettle has successfully entered standby mode.
- **Check Water Temperature:** At this point, the display will show the current water temperature, allowing you to easily monitor the heating status of the water.

Boiling Water Instructions (Without Keeping Warm):



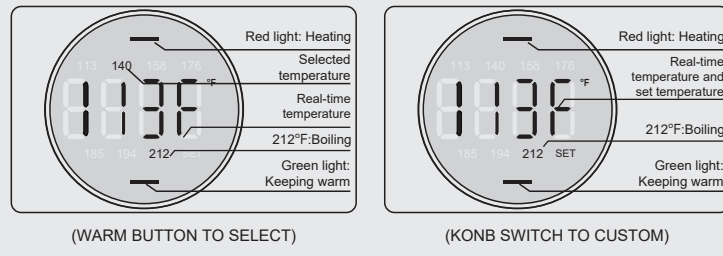
- Start the Kettle:**
 - Touch the "ON/OFF" button, and the display will flicker three times at 212°F, indicating that the kettle is turned on.
- Begin Heating:**
 - Waiting for 2 seconds, the kettle will automatically start heating, and the display will continuously show the current temperature along with 212°F, while the red heating indicator light will flash.
- Heating Completed:**
 - Once the water reaches a boil at 212°F, the kettle will emit a single "beep" sound and automatically return to standby mode.

Customized Temperature Boiling Water Instructions (Without Keep Warm Function):



- Start the kettle:**
 - Touch the "ON/OFF" button, and the display will show the real-time temperature with 212°F illuminated.
- Customize heating temperature with the knob:**
 - Rotate the knob to adjust to the desired water temperature, and the display will show the adjusted temperature. At this point, 212°F will not be illuminated on the display.
- Start heating:**
 - After confirming the setting, the kettle will automatically start heating after 2 seconds, the real-time heating temperature and the set temperature will alternate, while the red heating indicator light will flash.
- Heating completed:**
 - When the water temperature reaches the set value, the kettle will emit two "beep" sounds, and the device will automatically return to standby mode.

Boiling Water Instructions (With Keeping Warm) :



- Start the Kettle:**
 - Touch the "ON/OFF" button, and the display will flicker three times at 212°F, indicating that the kettle is turned on.

2.Select Keeping Warm Temperature and Start Heating:

- Select a Keeping Warm Temperature: Touch the "WARM" button repeatedly to choose the desired keeping warm temperature (available range: 113°F, 140°F, 158°F, 176°F, 194°F). After making your selection, wait for 2 seconds, and the kettle will automatically start heating. The display will continuously show the selected keeping warm temperature along with 212°F, while the red heating indicator light will flash.

- Customize Keeping Warm Temperature: First, touch the "WARM" button, and the 113°F indicator light will flash on the display. You can then rotate the knob to set a precise temperature that is not listed in the options. The digital display will show the temperature you set. After 2 seconds, the kettle will automatically start heating. During this time, the display will alternate between the keeping warm temperature and the real-time heating temperature, showing 212°F and "SET" simultaneously, while the red heating indicator light flashes.

3.Cooling and Keeping Warm Mode After Boiling

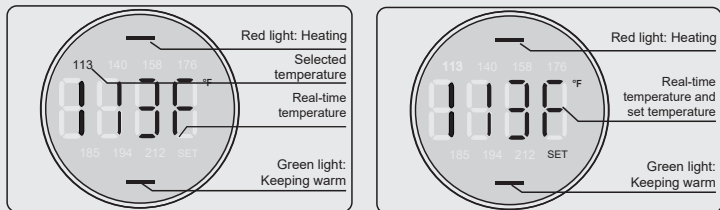
The kettle will boil water to 212°F and will emit a "beep" sound when complete. It will then automatically switch to cooling and keeping warm mode, with the green indicator light flashing.

4.Heating Keeping Warm Point

- When the water temperature reaches the selected temperature, the kettle will emit two beeps, indicating that the water temperature will be maintained at the selected level.

- Keeping warm at temperatures above 160°F lasts for 8 hours, while other keeping warm temperatures last for 12 hours.

Customized Temperature Boiling Water Instructions (With Keep Warm Function):



- Start Keeping Warm:**
 - Touch the "WARM" button, and the display will illuminate at 113°F.

2.Select Heating and Keeping Warm Temperature:

- Select the heating and keeping warm temperature: If you need to choose a different keeping warm temperature, you can continuously touch the "Warm" button to select (available range: 113°F, 140°F, 158°F, 176°F, 194°F). After selection, wait for 2 seconds, and the kettle will automatically start heating. The display will continuously show the selected keeping warm temperature and the real-time temperature, while the red heating indicator light will flash.

- Custom Keeping Warm Temperature: At this point, you can rotate the knob to set a precise temperature that is not listed among the options. The display will show the temperature you set. After 2 seconds, the kettle will automatically start heating. The display will alternate between the keeping warm temperature and the real-time heating temperature, with "SET" continuously displayed and the red heating indicator light flashing.

3. Enter Keeping Warm State After Reaching Heating Point:

- When the water temperature reaches the selected heating point, the device will emit two "beep" sounds, indicating that the water will be maintained at the selected temperature.

4. Note:

- When setting the keeping warm temperature, if the water temperature is higher than the set value, the device will emit two "beep" sounds, and the green indicator light will flash, automatically entering the cooling and keeping warm state, which means it will naturally cool down to the selected temperature before keeping warm.

- Keeping warm at temperatures above 140°F lasts for 8 hours, while other keeping warm temperatures last for 12 hours.

Tips:

- Each time a button is touched, the device will emit a "beep" sound.
- If you need to cancel heating or keeping warm midway, simply touch the "ON/OFF" button once.
- A flashing red indicator light indicates heating, while a flashing green indicator light indicates keeping warm. The 212°F indicator indicates boiling.
- "SET" indicates custom keeping warm temperature set by the knob.
- The top and bottom rows of numbers indicate the selected heating temperature or keeping warm.
- The digital display shows the real-time temperature or the custom temperature set by the knob.
- More heating and keeping warm options can be achieved through the Wi-Fi function.

Connection to the App

Before connecting to WiFi, please confirm the following:

- The electric kettle is successfully powered on.
- The WiFi indicator light is on and fast flashing. If the indicator light is not fast flashing, please touch and hold the "ON/OFF" button and the "WARM" button simultaneously until the device will emit a beep sound. Then release the buttons, and after 3 seconds the WiFi indicator light will change to fast flashing.
- The WiFi on your phone is turned on and connect to the internet normally. Please ensure you know the WiFi ID and password and the WiFi frequency band is 2.4 GHz.

Connection Mode	Wi-Fi Indicator Light Status
Waiting for Connection	Fast Flashing
Connecting	Slow Flashing
Connecting Successful	Solid On

Step:

- Download the App:
 - Scan the QR code to download and install the 'TuyaSmart Life APP', or search for "TuyaSmart Life" in the app store to download and install the TuyaSmart Life APP.



2. Add Device:
 - Open the TuyaSmart Life APP homepage and click on the top right corner "+". Follow the prompts in the app to add the device.
 - Note: Due to upgrades and updates of the TuyaSmart Life APP, the actual operation may vary slightly from the description above. Please follow the current instructions in the TuyaSmart Life APP.

Safety Precautions

To ensure safety and avoid personal injury and property damage, please be sure to follow the safety precautions below.

Usage Restrictions

- Do not allow individuals lacking physical, sensory, or cognitive abilities, or those lacking experience and common sense, to use this product without proper supervision or guidance.
- Do not allow children to use the product as a toy.
- This product should be kept out of reach of children.
- The normal operating altitude range is 0 to 2000 meters.
- The electric kettle should not be placed in unstable, damp areas or near other sources of fire or heat (ensure that the distance between the kettle and the fire or heat source is 250cm).
- Do not use the electric kettle to directly heat thick liquids such as milk, soy milk, or cold rice paste, as this may cause "burned bottom" and other scorched conditions, resulting in unpleasant odors.

Power Supply Precautions:

- Do not use a power supply other than AC 110V to avoid fire or electric shock.
- When unplugging the power supply, do not pull on the power cord to avoid electric shock or short circuit leading to fire.
- Always hold the plug portion when unplugging the power supply to prevent electric shock or short circuit leading to fire.
- Do not insert or replace the power plug with wet hands to avoid electric shock or injury.
- If the power cord is damaged, it must be replaced by professionals from the manufacturer, its service department, or similar departments to avoid danger.
- Do not use substandard socket adapters to prevent fire hazards.
- Ensure that the power supply is disconnected when there is no water in the kettle, when adding water, when not in use, when cleaning or moving the kettle, and when the kettle has issues.

Usage Instructions

- Do not tilt or shake the electric kettle while it is powered on.
- When adding water, do not exceed the maximum rated water level, as hot water may overflow or spray, which could be dangerous.
- Do not operate the kettle in a dry state (dry boiling).
- The electric kettle should only be used on the provided base.
- Keep the lid closed during use.
- Use the safety handle and avoid touching the kettle body or getting close to the spout and hot steam to prevent burns.
- Do not move the lid when the water is boiling.
- Do not insert pins, wires, or other objects into any gaps or openings of the electric kettle or base to avoid electric shock hazards.
- When adding water, remove the electric kettle from the base, and ensure to dry the bottom of the kettle before placing it back on the base.
- If the electric kettle exhibits any abnormalities or malfunctions, stop using it immediately and unplug the power supply. After the kettle has cooled down, have it repaired by a professional.

Dry-Bol Protection:

When the electric kettle is heated in a no-water state, the product's dry-bol protection function will stop heating to prevent damage to the kettle. In such cases, please unplug the power plug from the socket and wait for the electric kettle to cool down sufficiently before using it normally. Do not use cold water directly for cooling, as this may reduce the lifespan of the heating system.

Cleaning and Maintenance Guide

- Unplug the Power: Before cleaning, make sure to unplug the power cord and allow the kettle to cool completely.
- Clean the Interior: Open the lid and use a damp sponge to clean the inside of the kettle. A self-heating brush can be used to clean the lid.
- Be Cautious with Electronic Components: The electronic components at the bottom and base of the kettle should not come into contact with water. Do not rinse or soak the kettle body, base, power cord, or plug in water or any other liquids.
- Avoid Improper Cleaning Agents: Do not use steel wool or any chemical or abrasive powdered cleaners, as they may damage the device.
- Regular Descaling: To extend the kettle's lifespan, it is important to regularly clean the scale buildup inside. You can use the following methods for descaling:
 - Using White Vinegar:
 - Do not use a power supply other than AC 110V to avoid fire or electric shock.
 - When unplugging the power supply, do not pull on the power cord to avoid electric shock or short circuit leading to fire.
 - Always hold the plug portion when unplugging the power supply to prevent electric shock or short circuit leading to fire.
 - Do not insert or replace the power plug with wet hands to avoid electric shock or injury.
 - Using Citric Acid:
 - Add an appropriate amount of water into the kettle and bring it to a boil.
 - Add 25 grams of citric acid and let it sit for 15 minutes.
 - After employing the kettle, rinse inside with clean water 5-6 times. If necessary, you can repeat the above steps for cleaning.

Troubleshooting

Faults	Fault Analysis	Countermeasures
Screen not lighting up	Power contact or damage to the socket. Plug not properly inserted. Power plug melted or deformed. Display screen damaged.	Self-check. Contact after-sales service for repairs. Contact after-sales service for repairs.
No heating	Heating function not activated. Circuit board damaged. Heating element damaged. Temperature controller damaged.	Self-check. Contact after-sales service for repairs. Contact after-sales service for repairs. Contact after-sales service for repairs.
Water keeping boiling without the power, turning off or not boiling at all	Temperature sensor damaged. Circuit board damaged. Product not properly powered on.	Self-check. Contact after-sales service for repairs. Contact after-sales service for repairs. Self-check.
APP connection issues	APP not installed and updated. Phone's Wi-Fi not turned on. Phone's location services not enabled. Main control board damaged.	Self-check. Self-check. Self-check. Contact after-sales service for repairs.

Product Specifications

IntreLife
Product name: Electric Gooseneck Kettle
Product Model: GS-EG08Y
Rated Voltage: 110V~
Rated Frequency: 50Hz
Heating Power: 1800W
Manufacturer: Wuyang Jintan (Shenzhen) Technology Co., Ltd.
www.intrelife.com

Customer Support Information

If you need any after-sales service, please contact us via email:
intrelife@intrelife.com
Official Website: www.intrelife.com
Manufacturer: Wuyang Jintan (Shenzhen) Technology Co., LTD.
Address: Room 409, 4th Floor, Building C, No. 138, Changqing 2nd Road, Bao'an, Shenzhen, Guangdong, CN

FCC Warning Statement

Changes or modifications not expressly approved by the party responsible for compliance could void the user's authority to operate the equipment. This equipment has been tested and found to comply with the limits for a Class B digital device, pursuant to Part 15 of the FCC Rules. These limits are designed to provide reasonable protection against harmful interference in a residential installation. This equipment generates uses and can radiate radio frequency energy and, if not installed and used in accordance with the instructions, may cause harmful interference to radio communications. However, there is no guarantee that interference will not occur in a particular installation. If this equipment does cause harmful interference to radio or television reception, which can be determined by turning the equipment off and on, the user is encouraged to try to correct the interference by one or more of the following measures:

- Reorient or relocate the receiving antenna.
- Increase the separation between the equipment and receiver.
- Connect the equipment into an outlet on a circuit different from that to which the receiver is connected.
- Consult the dealer or an experienced radio/TV technician for help.

This device complies with part 15 of the FCC Rules. Operation is subject to the following two conditions: (1) This device may not cause harmful interference, and (2) this device must accept any interference received, including interference that may cause undesired operation.

RF Exposure Statement

To maintain compliance with FCC's RF Exposure guidelines, this equipment should be installed and operated with minimum distance of 20cm between your body. This device and its antenna must not be co-located or operation in conjunction with any other antenna or transmitter.