

Function Introduction

3. Zero Calibration

When there is a significant deviation between the point of impact and the aiming point during the initial installation or shooting of the scope, you can select the zero calibration mode from the menu bar.

Select “Zero Calibration” and press the M button to enter. The interface will be as shown in the following image.



Each configuration table can save up to 6 different distance values. After selecting a distance value, enter the adjustment interface. Select “+” to increase the zero calibration distance value.



Zeroing: Enter the zero adjustment menu.



X Deviation: Adjust the reticle's X coordinate.



Y Deviation: Adjust the reticle's Y coordinate.



Magnification: Select the magnification factor.

Function Introduction



Freeze: Press the menu button to freeze the image, Press again to restore it. During zero adjustment, after completing the shot, re-aim at the shooting position, then freeze the image and adjust the reticle position to the bullet hole location to complete the zero adjustment.



Save and Return: Save and return.



Edit Distance Title: Edit the distance value of the current option.



Delete Distance: Delete the current distance entry.



Return: Go back.

4. General Settings

Select “General Settings” and press the M button to enter the general settings submenu.



Shooting Video: When this option is enabled, the device will automatically record 15 seconds of video before and after the shooting action when a shot is detected.



Wi-Fi Password Settings: Set the Wi-Fi password. The initial password is 87654321.



System Time: Set the system time.



Bad Pixel Repair: Enter the bad pixel replacement submenu to perform operations related to bad pixel replacement.



Restore Factory Settings: Choose to restore the device to its factory parameters, such as image mode, brightness, contrast settings, etc.

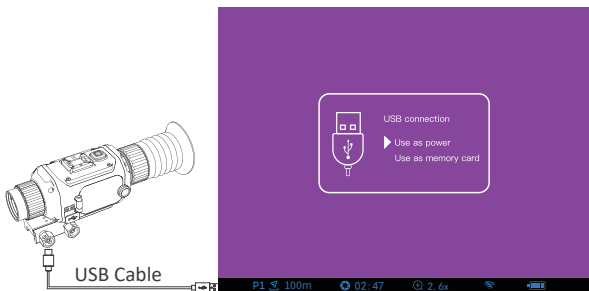


Return: Exit the submenu and return to the main menu.

Transfer Files

Connecting to a Computer for Data Transfer

Connect the device to the computer using a data cable (through the Type-C port on the device). Once connected successfully, a USB icon will appear on the device display, with two options on the right: the first option is “Power Mode,” and the second option is “USB Drive Mode.” Use the color palette button or the magnification button to select, and press the M button to confirm.



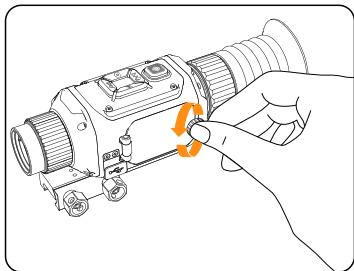
| | Name | Description |
|---|----------------|---|
| 1 | Power Mode | The computer will directly supply power to the device. |
| 2 | USB Drive Mode | The computer will automatically recognize the device's drive letter, allowing you to transfer and copy files. |

Charging

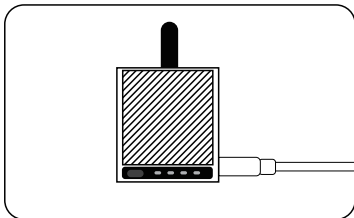
Charging the Device

The device is equipped with a rechargeable lithium battery. To charge the battery, it needs to be removed from the device. The procedure is as follows:

1. Open the battery compartment cover and remove the battery. As shown in the image, turn the securing screw counterclockwise to open the cover. You will see the battery. Pull on the small string attached to the battery to remove it.



2. Charge the battery with a 5V power supply. During the charging process, you will see the indicator on the battery flashing. It will stop flashing once fully charged.



App Download & Use

STEP 1 Download the App

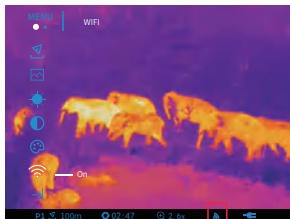
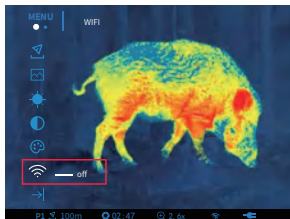
Use the thermal rifle scope with the “BeyondSight” app. You can download it from Google Play or scan the QR code below.



STEP 2 Turn on the Device's Wi-Fi

Long press the M button to enter the menu. The menu bar will appear on the left side of the screen. Press the color palette button or zoom in button to select the Wi-Fi icon, then press the M button, select on, and press the M button again to confirm.

⚠️ Note: After turning on the device's Wi-Fi, press and hold the M button to exit the menu.



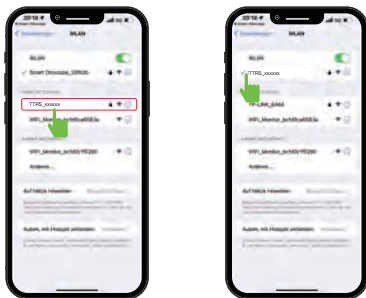
App Download & Use

STEP 3 Connect to the Device's Wi-Fi

Open the Wi-Fi setting on your mobile device and select the device's Wi-Fi network(Wi-Fi Name: TTRS_xxxxxx).

Enter the default password: 87654321.

Make sure your mobile device is successfully connected to the device's Wi-Fi, then open the app to use.



Safety Warnings

Note:

1. Keep away from damp and direct sunlight environments.
2. Avoid contact with sharp objects.
3. Do not use strong detergents or organic solvents to clean the lens; it is recommended to use a soft cotton cloth dampened with water. If the silver-coated lens surface comes into contact with liquid, wipe it with the included lens cloth. Do not use corrosive or abrasive cleaners, as these substances can damage the lens coating and reduce its performance.

Warning:

1. Do not puncture the product casing with nails or other sharp objects, and do not strike or step on the product.
2. Avoid using the product near fire sources or under extremely hot conditions.
3. Do not disassemble the product in any way.
4. Do not aim the scope directly at high-intensity energy sources (including the sun, laser emitters, and reflective sources).
5. If the product will not be used for an extended period, it is recommended to remove the battery and store the scope in a dry, ventilated environment.
6. In case of malfunctions or other unknown issues, please contact the manufacturer; do not attempt to disassemble or repair it yourself.

Troubleshooting

| Issue | Possible Solution |
|---|--|
| Cannot Power On | <ol style="list-style-type: none"> 1. Check if the battery is installed correctly (positive and negative terminals). 2. Check if the battery is exhausted. 3. Check if the battery is damaged. 4. Try plugging in the charger and then power on. |
| Connection Between Mount and Firearm is Loose | <ol style="list-style-type: none"> 1. Check for wear on the contact surface between the mount and the rail. 2. Check if the locking nut on the mount is stripped. |
| Battery Cover Cannot be Secured | Check if the locking screw on the battery cover is stripped. |
| Image is Blurry | <ol style="list-style-type: none"> 1. Check if the focus has been adjusted. 2. Check if the lens is too close to or too far from the object. 3. Check if image correction has been performed. |
| Automatic Calibration Failure | Check if the automatic calibration steps were followed according to the manual. |
| Mobile App Connection Failure | <ol style="list-style-type: none"> 1. Check if the scope's Wi-Fi is turned on. 2. Check if the Wi-Fi password is correct. |
| System Time Lost | If the product has not been used for an extended period, the internal battery may deplete, causing the system time to be lost. Reset the system time and keep the device powered on for more than 30 minutes. |

Regulatory Information

FCC Caution:

This device complies with part 15 of the FCC Rules. Operation is subject to the following two conditions: (1) This device may not cause harmful interference, and (2) this device must accept any interference received, including interference that may cause undesired operation.

Any changes or modifications not expressly approved by the party responsible for compliance could void the user's authority to operate the equipment.

NOTE: This equipment has been tested and found to comply with the limits for a Class B digital device, pursuant to Part 15 of the FCC Rules. These limits are designed to provide reasonable protection against harmful interference in a residential installation. This equipment generates, uses and can radiate radio frequency energy and, if not installed and used in accordance with the instructions, may cause harmful interference to radio communications. However, there is no guarantee that interference will not occur in a particular installation.

If this equipment does cause harmful interference to radio or television reception, which can be determined by turning the equipment off and on, the user is encouraged to try to correct the interference by one or more of the following measures:

- Reorient or relocate the receiving antenna.
- Increase the separation between the equipment and receiver.
- Connect the equipment into an outlet on a circuit different from that to which the receiver is connected.
- Consult the dealer or an experienced radio/TV technician for help.

The device has been evaluated to meet general RF exposure requirement. The device can be used in portable exposure condition without restriction.



Customer Service

Please contact us if you have any questions about your product.



12-month Warranty



Lifetime Technical Support



support@teslong.com



+1 (877) 899-8809 (US)
(Mon-Fri 8:00 AM-5:00 PM PST)



www.teslong.com



©TESLONG TTRS260/390/640
3.06.18.000200-01 E0212 V1.1