

May 14, 2025

Office of Engineering Technology  
Federal Communications Commission  
7435 Oakland Mills Road  
Columbia, MD 21046  
USA

**Subject: Explanation of differences between product types**

FCC ID: 2BNNY-SF105B



Test Model: SF105B-23R


Series Model(s): SF105B-18R, SF105B-26R, SF105B-18GCC, SF105B-23GCC, SF105B-26GCC, SF105B-18G, SF105B-23G, SF105B-26G, SF105-18G, SF105-18GCC, SF105-23G, SF105-23GCC, SF105-26G, SF105-26GCC

To Whom It May Concern:

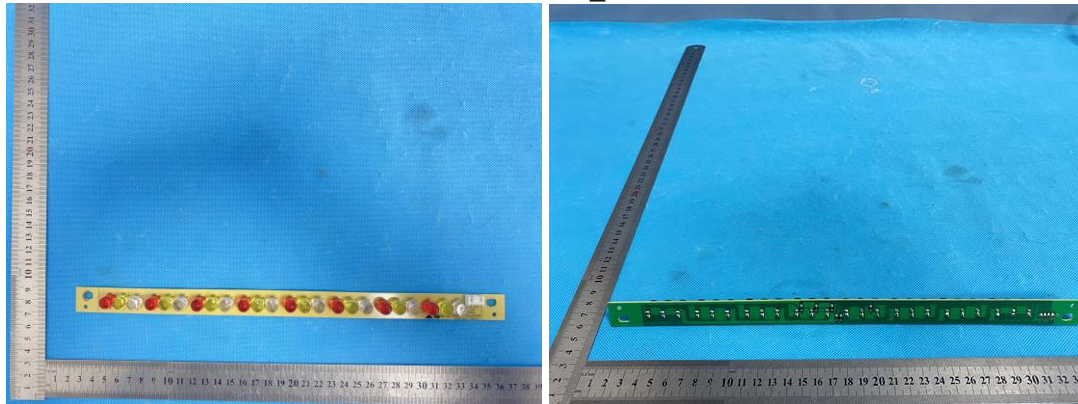
We, Zhongshan Sunshine Electrical Appliance Tech. Co., Ltd hereby declare that all the series models are the same as the test model except for the appearance size and LED light board modules of the product are different (See below for details on the size of the exterior).

**Exterior size:**

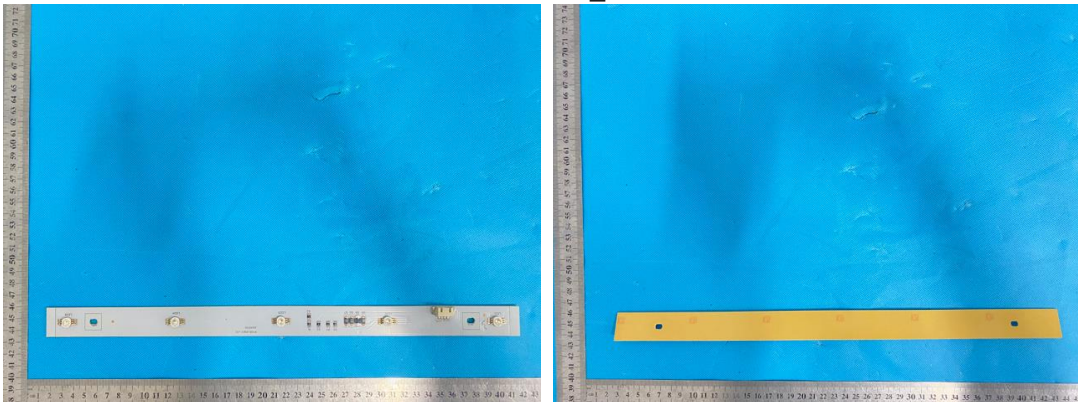
NO.	Model	Size (Unit: mm)			EUT
		L	H	T	
1	SF105B-18R, SF105B-18G, SF105B-18GCC, SF105-18GCC, SF105-18G	487	445	130	
2	SF105B-23R, SF105B-23G, SF105B-23GCC, SF105-23GCC, SF105-23G	614	445	130	

3	SF105B-26R, SF105B-26G, SF105B-26GCC, SF105-26GCC, SF105-26G	690	445	130	
---	--	-----	-----	-----	--

**LED PCB\_A**



**LED PCB\_B**



Note: The product is configurable with two LED light board modules (LED-PCB\_A/LED-PCB\_B). The core difference lies in their lighting characteristics, which does not affect their RF performance. Based on this critical parameter difference, the report conducted electromagnetic compatibility (EMC) tests - including Radiated Spurious Emission and AC Power Line Conducted Emission measurements - on both modules respectively. All test data are differentiated using "LED-PCB\_A" and "LED-PCB\_B" identifiers.

Sincerely,

Signature:



[Shucheng Xue, General Manager]