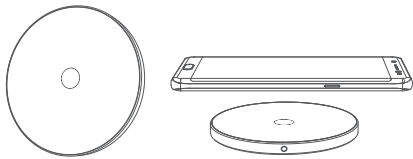


SIZE:65x90(mm) 128克单铜，单面黑白印刷，风琴折



Wireless Charger Pad
FCC ID: 2BNNLHD01

v. 01

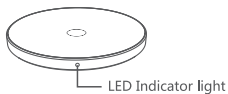


Parameter specification

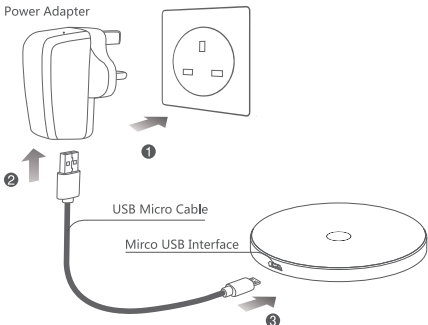
Model	HD01
Input voltage/current	5V/2.0A,9V/1.8A
Output power	5W/7.5W/10W
Product standard	Qi Standard
Charging frequency	111~148KHz
Transmission Distance	≤5mm
Efficiency:	≥75%
Product size	∅100*8mm

Indicating status and protection function

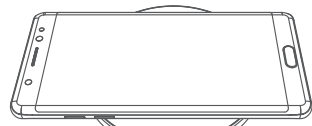
1. LED Blue Light: Standby
2. LED Green Light: Charging
3. LED Blue Light flashing: Mobile device location is not correct or the temperature control activated.



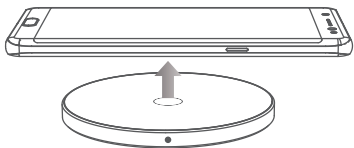
Instructions



1. Plug the power adapter directly into the wall outlet. An auxiliary power supply, such as a charging dock, may not support the wireless charging function.
2. Micro-USB side connects the power adapter, Micro-USB cable connects the wireless charging pad.
3. The Blue Light is the wireless charging indicator.
4. Place a wireless charging supported device onto the center of the charger. LED light will change from blue to green when charging.
5. If you remove the device, the LED light will change to blue and enter standby mode.



Put mobile phone on Charger



Remove the mobile phone from Charger

6. The wireless charging device performs best in an air conditioned environment.

Note: Only the QC2.0/3.0 Standard power adapter can support this product's fast charging capability. Additional power adapters sold separately.

Attention

1. Please do not drop wireless charging device or it may malfunction.
2. Please do not dismantle the wireless charging device.
3. Please do not place in fire, water, high temperature, or high humidity environment.
4. Please do not place a magnetic strip, chip ID, or credit card onto the wireless charger. This may result in loss of magnetic function.
5. Please do not place foreign metal, such as coins, onto the wireless charger to avoid damage from overheating.

FCC Statement

This device complies with part 15 of the FCC rules. Operation is subject to the following two Conditions: (1)This device may not cause harmful interference, and (2) this device must accept any interference received, including interference that may cause undesired operation. Changes or modifications not explicitly approved by the party responsible for compliance could void the user's authority to operate this equipment.

Included: Aluminum Wireless Charger, 4ft (120cm) Micro USB Cable, User Manual

FCC Information:

This equipment has been tested and found to comply with the limits for a Class B digital device, pursuant to part 15 of the FCC Rules.

These limits are designed to provide reasonable protection against harmful interference in a residential installation. This equipment generates, uses and can radiate radio frequency energy and, if not installed and used in accordance with the instructions, may cause harmful interference to radio communications. However, there is no guarantee that interference will not occur in a particular installation. If this equipment does cause harmful interference to radio or television reception, which can be determined by turning the equipment off and on, the user is encouraged to try to correct the interference by one or more of the following measures:

- Reorient or relocate the receiving antenna.
- Increase the separation between the equipment and receiver.
- Connect the equipment into an outlet on a circuit different from that to which the receiver is connected.
- Consult the dealer or an experienced radio/TV technician for help.

RF Exposure Statement:

This equipment complies with FCC radiation exposure limits set forth for an uncontrolled environment.

This equipment should be installed and operated with minimum distance 20cm between the radiator & your body.