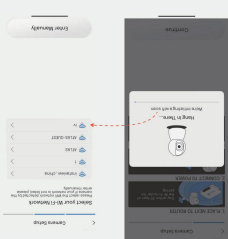
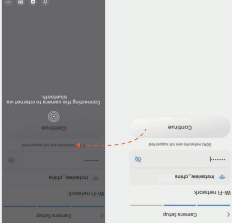


4. **Bluetooth Access:** Do not skip this step. Enter Bluetooth access is enabled as instructed, allowing the app to discover the device via BLE.



5. **Connect to Wi-Fi:** The app will automatically scan for nearby 2.4GHz Wi-Fi routers. Choose your desired Wi-Fi network from the list provided.



6. **Input Wi-Fi Credentials:** Enter the password for your selected Wi-Fi network. Click "Continue" to initiate connection. Wait a few seconds for the device to connect to the network. You'll hear a notification sound from the device indicating successful progress.



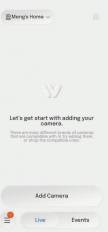
7. **Device Naming:** Once paired successfully, name your device for easy identification.



8. **See Live View:** Upon completing the initial setup, access the main interface to view the live camera feed.



3. **Add Camera:** Locate and select "Add Camera," then scan the QR code on the device.



3. **Add camera:** Navigate to the Home page within the app. The app camera page.



2. **Account Registration:** Register a new account or log in to an existing account.



2. **Account Registration:** open the app.

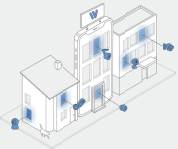


Introduction

Welcome to the InstaVision Camera App. This manual will guide you through the various features of the app to ensure you get the most out of your security camera.

Installation and setup

1. **Download and Install:** Download and install the InstaVision app by scanning the QR code for the Apple Store or Google Play Store.



FCC Warning

This device complies with part 15 of the FCC Rules. Operation is subject to the following two conditions:
(1) This device may not cause harmful interference, and (2) this device must accept any interference received, including interference that may cause undesired operation.

Any Changes or modifications not expressly approved by the party responsible for compliance could void the user's authority to operate the equipment.

Note: This equipment has been tested and found to comply with the limits for a Class B digital device, pursuant to part 15 of the FCC Rules. These limits are designed to provide reasonable protection against harmful interference in a residential installation. This equipment generates uses and can radiate radio frequency energy and, if not installed and used in accordance with the instructions, may cause harmful interference to radio communications. However, there is no guarantee that interference will not occur in a particular installation. If this equipment does cause harmful interference to radio or television reception, which can be determined by turning the equipment off and on, the user is encouraged to try to correct the interference by one or more of the following measures:

- Reorient or relocate the receiving antenna.
- Increase the separation between the equipment and receiver.
- Connect the equipment into an outlet on a circuit different from that to which the receiver is connected.
- Consult the dealer or an experienced radio/TV technician for help.

This equipment complies with FCC radiation exposure limits set forth for an uncontrolled environment. This equipment should be installed and operated with minimum distance 20cm between the radiator & your body.