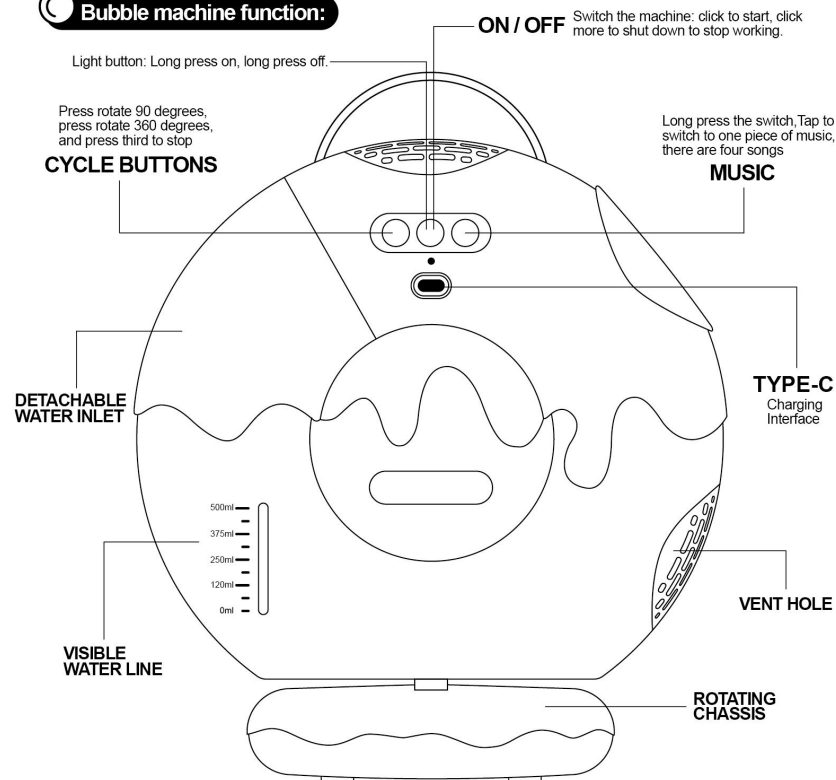
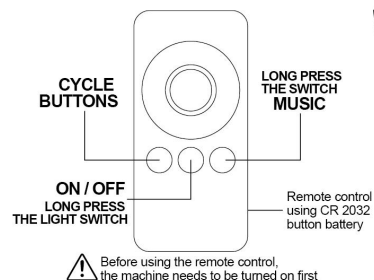


Bubble machine function:

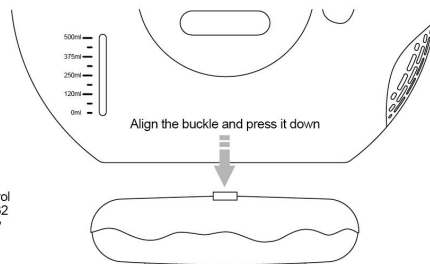


Portable Rechargeable Design: Our creative rechargeable bubble machine powered by 1200 mAh battery and a USB Type-C charging port, and offers up to 3-5 hours of continuous bubble-blowing fun on just a 5 hours charge.

Remote control function:



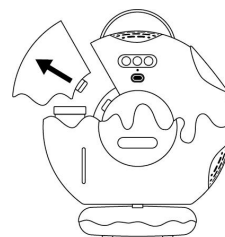
Bubble machine assembly:



Gameplay steps:

Note: Before using, please read the instruction manual carefully and follow the warnings and safety rules listed in the instruction manual. The company reserves the right to amend the manual and the functions described in this manual are not for the purpose of using the product for special purposes.

① Open



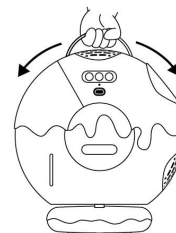
② Add water



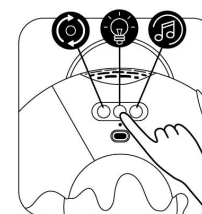
③ Add one pack of concentrate



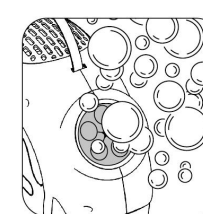
④ Shake the machine mix the bubble liquid



⑤ Switch ON/OFF



⑥ Powerful and blow bubbles faster



Gameplay warning:

1. Do not place the machine or store it in an unsafe place where it is easy to fall or break; The machine should be far away from the heat source radiator, heater and any other form of heating equipment;
2. Under the condition of aerosol, don't use this machine;
3. Keep the machine away from Liquid Petroleum Gas or any form of equipment which involves liquid petroleum gas like an oven, gas stove, etc. More-over, keep the material away from any form of flame, mable gas or flammable volatile fluid while using the product.
4. A person who has a heart attack or who has a pacemaker is forbidden to use this product.

Battery capacity: 1200mAh

Output power: Dc 5V---0.5A

Production date: January 10th, 2025

Manufacturer's address: Jinshi Building, Meilong Road, Chenghai District, Shantou City

Power supply: 5V, 500mA

Battery voltage: 3.7V

Charging time: 5 H Charging current: 100 mA



Non-Toxic CAUTION: EYE IRRITANT In case of contact with eyes flush eyes with large quantities of water. Only use it under adult supervision.

This device complies with Part 15 of the FCC Rules. Operation is subject to the following two conditions: (1) this device may not cause harmful interference, and (2) this device must accept any interference received, including interference that may cause undesired operation.

Changes or modifications to this unit not expressly approved by the party responsible for compliance could void the user ' s authority to operate the equipment.

NOTE: This equipment has been tested and found to comply with the limits for a Class B digital device, pursuant to Part 15 of the FCC Rules. These limits are designed to provide reasonable protection against harmful interference in a residential installation. This equipment generates uses and can radiate radio frequency energy and, if not installed and used in accordance with the instructions, may cause harmful interference to radio communications. However, there is no guarantee that interference will not occur in a particular installation. If this equipment does cause harmful interference to radio or television reception, which can be determined by turning the equipment off and on, the user is encouraged to try to correct the interference by one or more of the following measures:

- Reorient or relocate the receiving antenna.
- Increase the separation between the equipment and receiver.
- Connect the equipment into an outlet on a circuit different from that to which the receiver is connected.
- Consult the dealer or an experienced radio/TV technician for help.

This device and its antenna(s) must not be co-located or operation in conjunction with any other antenna or transmitter.

Radiation Exposure Statement

The device has been evaluated to meet general RF exposure requirement in portable exposure condition without restriction.