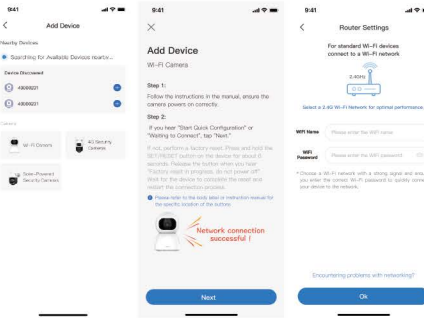
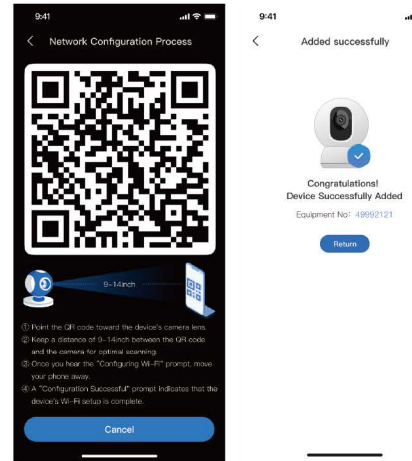


## MANUAL NETWORK CONFIGURATION

1. Tap on the “Wi-Fi Camera” option in the app or interface.
2. Proceed by clicking Next as per the on-screen instructions.
3. Input the Wi-Fi account and password.

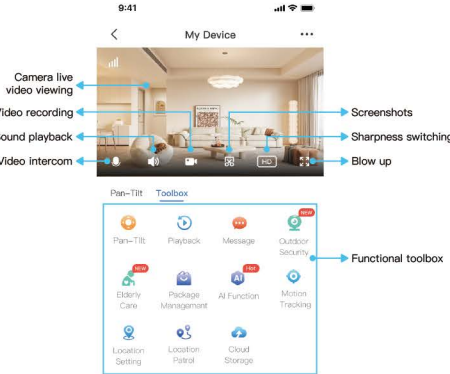


4. Place the QR code displayed on the app in front of the camera lens for scanning.
5. Once the QR code is successfully recognized, wait for the device to complete the network setup.



## DEVICE MANAGEMENT AND VIEWING

1. Click on the camera image to access the camera's pan-tilt settings interface.



## FREQUENTLY FAQS AND SOLUTIONS

### Q: Device shows offline

- A: 1. Check if the device is correctly connected to power. Once you hear the prompt “Device has started” , the device will function normally.
2. Ensure the Wi-Fi network is connected properly and verify if the Wi-Fi password has been changed.

### Q: TF Memory Card not readable

- A: Check if the TF card is inserted correctly. You may try removing and reinserting the card.

### Q: Black screen issue

- A: Press and hold the reset button for 3–10 seconds to reset the device. This will resolve 99% of device issues.

### Q: Monitoring screen is upside down

- A: In the app, tap the top-right corner, go to Basic Settings, and select Flip Screen Up/Down or Flip Screen Left/Right. Disable the flip option to restore the normal screen orientation.

### Q: Camera rotates automatically

- A: In the app, tap Toolbox > Motion Tracking. Check if the motion tracking function is enabled. If it is, the camera will automatically track moving objects. You can toggle the switch to enable or disable this feature.

### Q: Noise issue

- A: Some ambient noise is normal. You can reduce the noise by lowering the device's volume.

## IMPORTANT NOTES

1. **Avoid High Heat Sources:** Do not place the device near heat sources or open flames, such as heaters, ovens, stoves, candles, or other places that may generate high temperatures.

2. **Keep Away from Children and Pets:** Prevent children or pets from swallowing the device or its accessories to avoid injury or malfunction.

3. **Operating and Storage Temperature:** The recommended operating temperature for this product is -30°C to 50°C, and it should be stored within the range of -30°C to 85°C. Do not use the device in environments that are too hot or too cold.

4. **Avoid Humid Environments:** This product is a precision electronic device. Do not use it in excessively humid environments or places where water ingress could occur, as it may affect normal operation.

5. **Avoid Reflective Surfaces:** For better performance, avoid placing the camera near reflective surfaces such as glass or white walls. This can prevent issues like overexposure in the foreground or white-out effects.

6. **Micro SD Card for Upgrades:** To ensure better product performance, this device allows for firmware upgrades via a Micro SD card.

7. **Proper Installation:** When installing the device, follow the installation guide to securely mount it to a wall or ceiling. This will prevent the camera from falling and causing damage.

## PRODUCT HAZARDOUS SUBSTANCES AND THEIR CONTENT

Part Name	Harmful substance					
	Lead (Pb)	Mercury (Hg)	Cadmium (Cd)	Chromium (VI)	Polybrominated biphenyls(PBB)	Polybrominated diphenyl ethers (PBDE)
Shell	O	O	O	O	O	
Pcb Board	X	O	O	O	O	
Cable	O	O	O	O	O	
Attachments	X	O	O	O	O	



The numbers within this label indicate the environmentally friendly use period of the product under normal usage conditions, which is 10 years. Some components may also have their own environmental use period labels, and the environmental use period for those components is based on the number indicated on their labels.

Please note:

Due to different models, the product may not include all the components listed above, except for the main unit.

The actual product configuration should be based on the specific product you purchase.

## AFTER-SALES SERVICE CARD

Product Model Name:

Code No.:

User Name:

Contact:

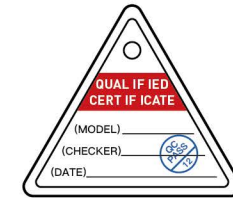
Address:

Phone Number:

Fax:

Postal Code:

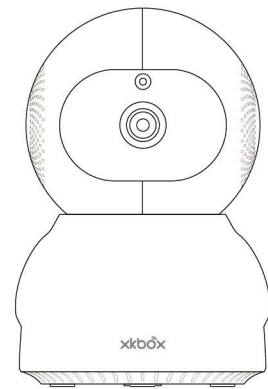
Inspection Record:



Date	Fault Phenomenon	Repairer

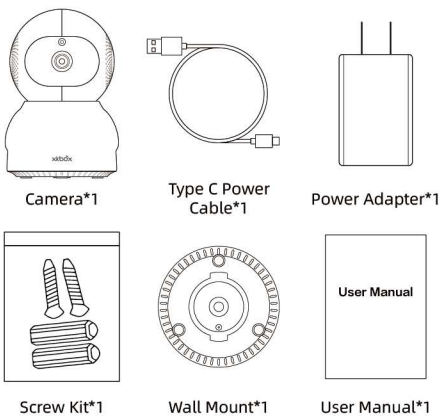


## Smart Security Camera Indoor User Manual



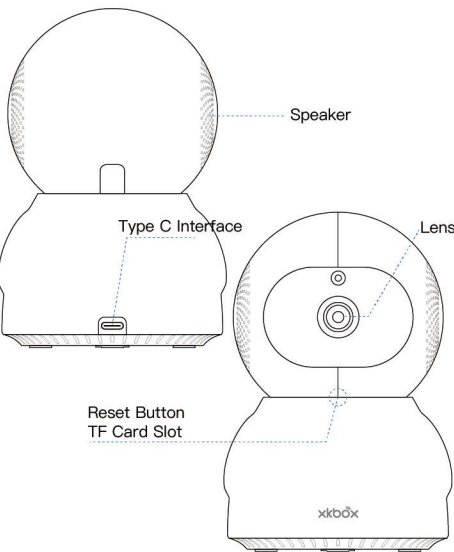
The pictures attached are only for reference.  
Please refer to the actual interface

## PACKAGE LIST



After receiving the product, please promptly check that all packaging and accessories are complete. If any accessories are missing, please contact customer service immediately for a return, exchange, or to request the missing items.

## TO KNOW YOUR CAMERA



## APP DOWNLOAD AND INSTALL

### Option 1:

Scan the QR code below to download the "XKBOX" app.



"XKBOX" QR Code

### Option 2:

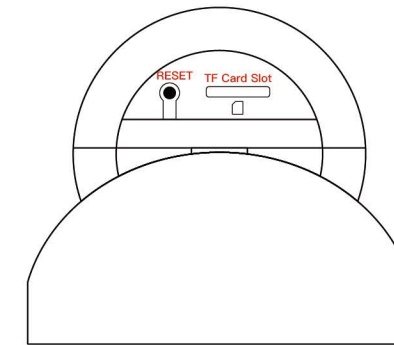
Search for "XKBOX" in the app store to install the app.



## INSTALL TF MEMORY CARD

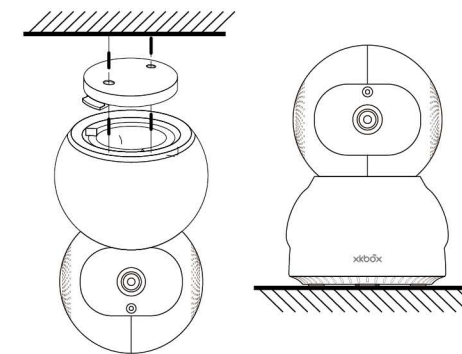
### Insert TF memory card

- 1.Insert the prepared TF card.
- 2.Compatible with 32GB to 256GB TF cards.
- 3.Once inserted, the device will automatically start recording. When storage is full, earlier recordings will be automatically overwritten in a loop.



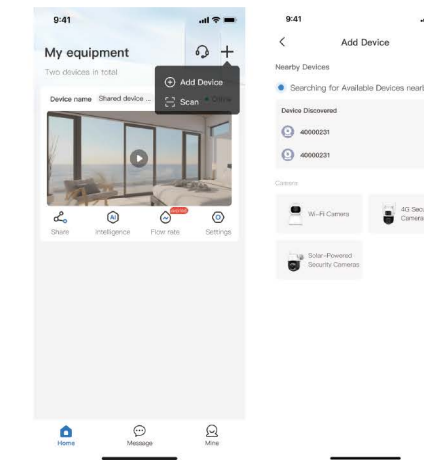
## Installation Instructions

- Ceiling Mounted: Secure the wall mounting bracket by drilling holes, inserting wall plugs, and fastening screws. Align the camera base with the bracket buckle and rotate it to securely mount the camera.
- Desktop Placement: Place the camera steadily on a flat surface without the need for additional installation. Ensure the surface is level and stable to prevent the camera from tipping over or sliding. Adjust the angle as needed before use.

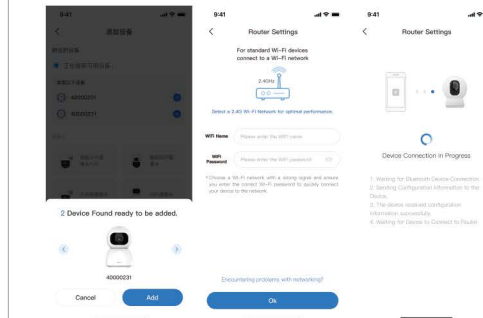


## QUICK CONFIGURATION

- 1.Tap the "Add Device" option in the top right corner of the home page.
- 2.Turn on both Bluetooth and Wi-Fi.



- 3.Choose the detected Wi-Fi device from the list for setup.
- 4.Input the Wi-Fi account and password.
- 5.Wait for the system to complete the setup.



FCC STATEMENT This device complies with Part 15 of the FCC Rules. Operation is subject to the following two conditions:

- (1) This device may not cause harmful interference, and
- (2) This device must accept any interference received, including interference that may cause undesired operation.

Changes or modifications not expressly approved by the party responsible for compliance could void the user's authority to operate the equipment. This equipment has been tested and found to comply with the limits for a Class B digital device, pursuant to part 15 of the FCC Rules. These limits are designed to provide reasonable protection against harmful interference in a residential installation. This equipment generates, uses and can radiate radio frequency energy and, if not installed and used in accordance with the instructions, may cause harmful interference to radio communications. However, there is no guarantee that interference will not occur in a particular installation. If this equipment does cause harmful interference to radio or television reception, which can be determined by turning the equipment off and on, the user is encouraged to try to correct the interference by one or more of the following measures:

—Reorient or relocate the receiving antenna. —Increase the separation between the equipment and receiver.

—Connect the equipment into an outlet on a circuit different from that to which the receiver is connected.

—Consult the dealer or an experienced radio/ TV technician for help.

FCC Radiation Exposure Statement: This equipment complies with FCC radiation exposure limits set forth for an uncontrolled environment. In order to avoid the possibility of exceeding the FCC radio frequency exposure limits, Human proximity to the antenna shall not be less than 20cm(8 inches)during normal operation