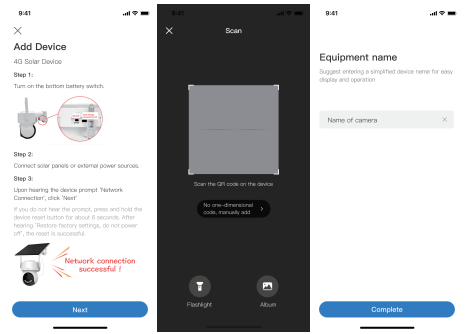


4G Solar Device Connection Process

- 1. Connect the device to the solar panel, then place the solar panel in a sunny location and wait for a moment.
- 2. After adding the device, fully charge it before use.
- 3. Install the device and the solar panel on the desired surface.
- 4. Ensure the solar panel faces the sunlight at an optimal angle of 60 degrees.



FREQUENTLY FAQS AND SOLUTIONS

Q: Device shows offline

A: It may be due to insufficient battery power. Place the solar panel in a well-lit area and wait a moment until you hear a prompt sound: "Device has started," after which it should work normally.

Q: TF card cannot be read

A: Check if the TF card is properly inserted. You can try reinserting it.

Q: Black screen issue

A: Press and hold the reset button for 3–10 seconds to reset the device. After resetting, the device should return to normal.

Q: The monitoring screen is upside down

A: In the app, tap the top-right corner > Basic Settings > Flip Screen Vertically/Flip Screen Horizontally, and turn off the flip screen toggle to restore the normal display.

Q: The camera rotates automatically

A: In the app, tap Toolbox > Motion Tracking, and check if the motion tracking feature is enabled. If it's on, the camera will automatically track moving objects. You can control this feature with the toggle.

Q: Noise issue

A: Some background noise is normal, depending on the environment. You can reduce the noise by lowering the device volume.

IMPORTANT NOTES

- 1、The device is powered by a 4.2V lithium battery. Please do not cut the power cord and connect it to a 220V electrical outlet.
- 2、Do not place the device near heat sources or open flames, such as space heaters, ovens, stoves, candles, or other places that may generate high temperatures.
- 3、Keep the device and its accessories out of reach of children or pets to prevent injury or damage to the device.
- 4、The operating temperature range for this product is –30°C to 50°C, and the device and accessories should be stored between –30°C and 85°C. Do not use the product in environments with extreme temperatures.
- 5、This is a precision electronic product. Do not use it in overly humid conditions or environments where the product may get wet, as this could affect its normal functioning.
- 6、For optimal performance, avoid positioning the lens too close to reflective surfaces such as glass or white walls to prevent issues like overexposed areas near the lens or dim and washed-out distant views.
- 7、If using 4G connectivity, ensure the product is installed within the 4G signal coverage area and placed in a location with the best possible 4G signal.
- 8、For easier future maintenance, this product supports firmware upgrades via a Micro SD card.
- 9、When installing the device, follow the installation guide to securely mount it to a wall or ceiling to prevent the camera from falling and causing damage.

PRODUCT HAZARDOUS SUBSTANCES AND THEIR CONTENT

Part Name	Harmful substance					
	Lead (Pb)	Mercury (Hg)	Cadmium (Cd)	Chromium (VI)	Polybrominated biphenyls(PBB)	Polybrominated diphenyl ethers (PBDE)
Shell	O	O	O	O	O	
Pcb Board	X	O	O	O	O	
Cable	O	O	O	O	O	
Attachments	X	O	O	O	O	

This table is compiled in accordance with the provisions of SJ/T 11364–2014.

O: Indicates that the content of the hazardous substance in all homogeneous materials of this component is below the limits specified in GB/T 26572.

X: Indicates that the content of the hazardous substance in at least one homogeneous material of this component exceeds the limits specified in GB/T 26572.



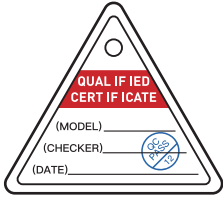
The numbers within this label indicate the environmentally friendly use period of the product under normal usage conditions, which is 10 years. Some components may also have their own environmental use period labels, and the environmental use period for those components is based on the number indicated on their labels.

Please note:

Due to different models, the product may not include all the components listed above, except for the main unit. The actual product configuration should be based on the specific product you purchase.

AFTER-SALES SERVICE CARD

Product Model Name:
Code No.:
User Name:
Contact:
Address:
Phone Number:
Fax:
Postal Code:
Inspection Record:



Date	Fault Phenomenon	Repairer

This device complies with Part 15 of the FCC Rules. Operation is subject to the following two conditions: (1) This device may not cause harmful interference, and (2) This device must accept any interference received, including interference that may cause undesired operation.