

USER MANUAL

Warning: Changes or modifications to this unit not expressly approved by the party responsible for compliance could void the user's authority to operate the equipment.

NOTE: This device complies with part 15 of the FCC Rules.

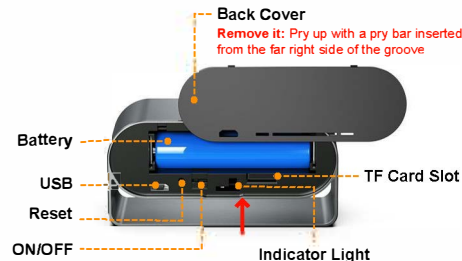
Operation is subject to the following two conditions:

- (1) This device may not cause harmful interference, and
- (2) this device must accept any interference received, including interference that may cause undesired operation.

FCC Statement: This equipment has been tested and found to comply with the limits for a Class B digital device, pursuant to part 15 of the FCC Rules. These limits are designed to provide reasonable protection against harmful interference in a residential installation. This equipment generates, uses and can radiate radio frequency energy and, if not installed and used in accordance with the instructions, may cause harmful interference to radio communications. However, there is no guarantee that interference will not occur in a particular installation. If this equipment does cause harmful interference to radio or television reception, which can be determined by turning the equipment off and on, the user is encouraged to try to correct the interference by one or more of the following measures:

- Reorient or relocate the receiving antenna.
- Increase the separation between the equipment and receiver.
- Connect the equipment into an outlet on a circuit different from that to which the receiver is connected.
- Consult the dealer or an experienced radio/TV technician for help.

RF exposure compliance statement: This device has been evaluated to meet the general RF exposure requirement. This equipment should be installed and operated with minimum distance 20cm between the radiator and your body.



LED Indicators

Indicator Code	Condition
RED ON	Disconnected from the network
BLUE Flashing-quickly	Waiting for distribution network (AP mode, no video)
BLUE Flashing-slowly	Distributing network
BLUE OFF	Successful distribution network
RED & BLUE both ON	Long press the reset button to reset

Device Connection

1 APP Download

1st Way

Download the “Tuya Smart” App from Google Play Store (for Android) or Apple Store (for IOS)



2st Way

Scan the QR Code to download the “Tuya Smart” App



Warning Tip: Due to federal regulations, the camera does not record audio.

2 Register and log in to the APP

1st Way

Please register an APP account and log in.

2st Way

If already registered, please log in directly.

3 Add device

Steps:

Open the mobile APP, please click “+” in the upper right corner or click “Add Device” — “Camera&Lock” — “Smart Camera(2.4GHz&5GHz)” — “QR Code for Camera” in the upper right corner — “WiFi Mode” — “Next step” — “AP Mode” and complete device binding according to the guidance of the mobile phone.

Quick Guide

— Open the “Tuya Smart” APP

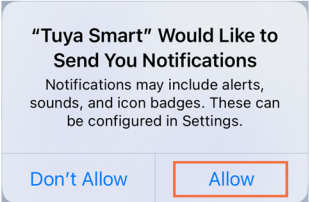
— You need to confirm these prompts, which appear using the APP for the first time, as shown on the picture below

After confirming the above prompts, the device will automatically pop up as addable. (As shown below)



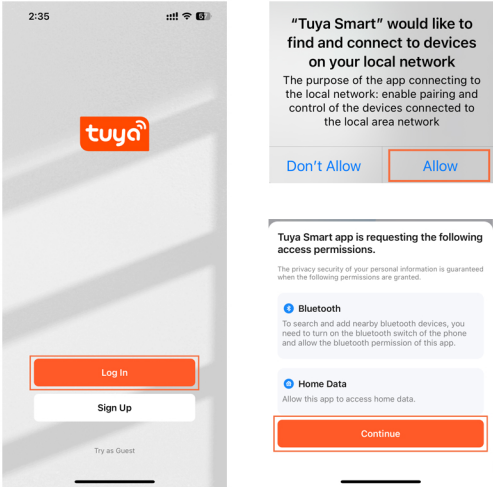
— “Tuya Smart” Would Like to Send You Notifications---Allow

—Allow “Tuya Smart” to use wireless data?
---WLAN & Cellular



—Register and Log in to the App account

— “Tuya Smart” Would like to find and connect to devices on your local network---Allow



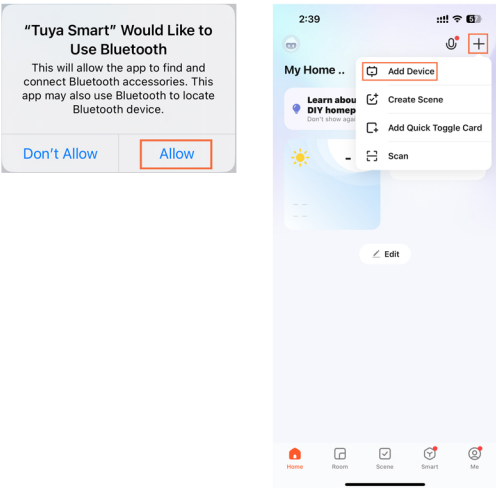
—Tuya Smart app is requesting the following access permissions.---Continue

Bluetooth---Allow

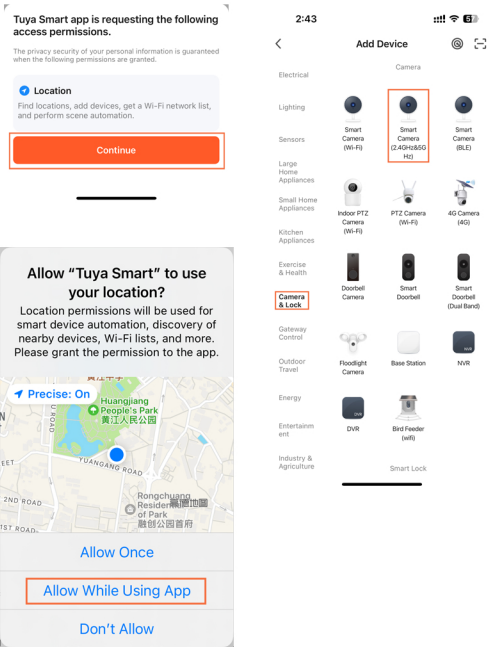
Home Data---Allow

Location---Allow While Using App

—Click “Add Device” or “+” in the upper right corner to add a new device



—Select “Camera&Lock”, click Smart Camera (2.4GHz&5GHz)



—Click “QR Code for Camera” in the upper right corner, select “WiFi Mode”

—Select the status of the indicator light or hear the beep: AP Mode

