

80mm

110mm



R5

CARBON FIBER LIGHTWEIGHT MOUSE
USER MANUAL

Thank you very much for choosing our  products. We hope it can bring you a brand new operation and experience. At the same time, we look forward to receiving your valuable suggestions on our products. We will continue to provide you with better products and services.

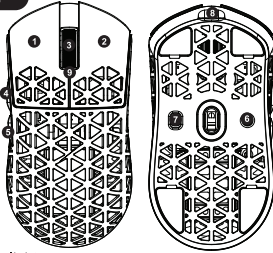
Product Introduction

1. Product model: R5 Ultra
2. Product interface type: USB-Type-C
3. Product connection method: USB, 2.4G
4. Product optical sensor: Pixar PAW3950
5. Main control IC: Nordic 52840
6. Transmission frequency: 2402MHz-2480MHz
7. Report rate (Hz): 2.4G mode: 125/250/500/1000default/2000/4000/8000Hz (driver adjustable)
Wired mode: 125/250/500/1000Hz default (driver adjustable)
Bluetooth mode: 125Hz
8. Frame rate (IPS): 750IPS
9. Maximum acceleration (G): 50G
10. DPI value and corresponding color: 1200 (red) -2400 (green) -3200 (blue) -5600 (yellow) -8000 (cyan) -42000 (purple)
11. Charging current: ≈150mA
12. Charging voltage: 4.25v-5.25V
13. Product weight: ≈42±1g
14. Battery capacity: 230mAh
15. Product size: 119,5*61*36,3mm
16. Data line interface (length): Type-C/1.5meters
17. Wireless transmission distance: 10 meters
18. Switch brand and service life: Omron 100 million times
19. Supported operating systems: XP, Win7, Win8, Win10, Win11, Mac OS, Android, Linux, etc.
20. Sleep mode current: Sleep (60uA)

English

Key Function Description

- 1: Left button
- 2: Right button
- 3: Middle button
- 4: Forward button
- 5: Back button
- 6: DPI cycle
- 7: Power toggle



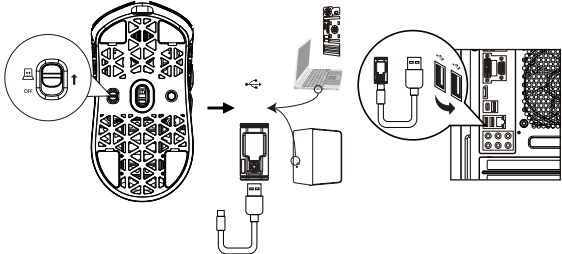
- 8: Type-C interface
- 9: Indicator Lights
- (1) Charging. Low voltage. Full indicator light
- (2) DPI indicator light (flashes 3 times and turns off after switching)
- (3) Mode indicator light: 2.4G (green)
- (4) Six-speed DPI value: 1200 red-2400 green-3200 blue (default)-5600 yellow-8000 cyan-42000 purple

Warm Tips

1. Sleep mode: The mouse enters sleep mode after stopping working for 30 seconds
2. Sleep wake-up method: button wake-up
3. Hardware connection: Insert the product USB plug into the USB 1.1 or above version port (when the product is used for the first time, the automatic hardware installation prompt will pop up in the lower right corner of the computer)

Connection Mode

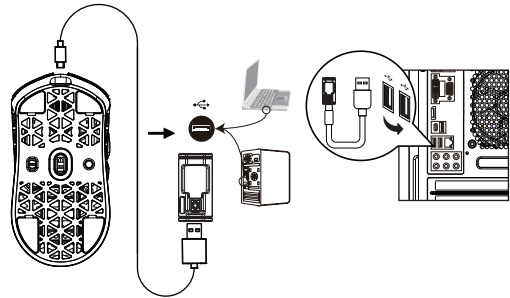
2.4G Connection Method:



1. When you want to use the 2.4G channel of the mouse, turn the power switch to the 2.4G position and the green light will flash, then take out the 2.4G receiver of the mouse, and plug the receiver into the idle USB port of the computer. At this time, the computer will automatically install the configuration software. When the computer prompts that the installation is complete and can be used, the green light will be on for 1S, and then the mouse can be connected to the computer. If the computer does not respond after plugging in the receiver, you need to change another USB port. At this time, the computer will automatically pair and install the corresponding adapter software. Generally, the computer will prompt: Installation is complete and can be used, which means that the mouse has been successfully paired with the computer 2.4G.
2. If the 2.4G signal finds a connection obstacle or the signal is lost, turn the power switch to the 2.4G position, then take out the mouse 2.4G receiver and press and hold the "1", "2", and "3" keys for about three seconds to flash the green light. Then plug the receiver into the computer's idle USB port. When the pairing is successful, the light will be green for 1 second and then go out, and the mouse can be used normally. If the pairing fails within 120 seconds, please repeat the above operation.

Wired mode connection method:

Use the TYPE-C cable to connect to the computer. When the cable is plugged in, switch the mouse to "OFF" for wired mode. Move the mouse to move the computer screen pointer and the mouse can be used normally.



Precautions

- ⚠ Do not soak the mouse in liquid or sprinkle it with liquid
- ⚠ Do not use the mouse in high temperature and high humidity environment
- ⚠ Do not place the mouse in open flame
- ⚠ Do not violently crush the mouse
- ⚠ Do not disassemble the mouse

FCC Caution

This device complies with part 15 of the FCC Rules. Operation is subject to the following two conditions: (1) This device may not cause harmful interference, and (2) this device must accept any interference received, including interference that may cause undesired operation.

Any changes or modifications not expressly approved by the party responsible for compliance could void the user's authority to operate the equipment.

NOTE: This equipment has been tested and found to comply with the limits for a Class B digital device, pursuant to Part 15 of the FCC Rules. These limits are designed to provide reasonable protection against harmful interference in a residential installation. This equipment generates, uses and can radiate radio frequency energy and, if not installed and used in accordance with the instructions, may cause harmful interference to radio communications. However, there is no guarantee that interference will not occur in a particular installation.

If this equipment does cause harmful interference to radio or television reception, which can be determined by turning the equipment off and on, the user is encouraged to try to correct the interference by one or more of the following measures:

- Reorient or relocate the receiving antenna.
- Increase the separation between the equipment and receiver.
- Connect the equipment into an outlet on a circuit different from that to which the receiver is connected.
- Consult the dealer or an experienced radio/TV technician for help.

The device has been evaluated to meet general RF exposure requirement. The device can be used in portable exposure condition without restriction.