

## Smart Pet Water Fountain User Manual

Thank you for choosing MagicScoop products  
This product is for household use only. Please keep this manual for future reference.

F1

### CONTENTS

PRECAUTIONS	P1	ASSEMBLING	P3	CLEAN DEVICE	P5	CUSTOMER SERVICE	P6
COMPONENTS	P2	CONTROL PANEL & APP	P4	TROUBLESHOOTINGS	P6		
PARAMETERS	P3	CLEAN PUMP	P5	WARRANTY TERMS	P6		

### PRECAUTIONS

Please read this product manual carefully before use, once installed or used, it means that you accepted the following safety instructions. We are not responsible for any accidents and losses caused by incorrect operation, and do not assume any legal responsibility.

#### WARNINGS

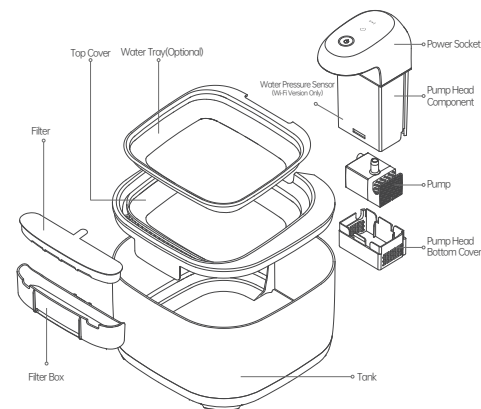
- Do not plug or unplug the power cord or adapter with wet hand.
- If an abnormality occurs with this product, stop using it immediately and unplug the adapter.
- Pet biting the cord may cause electricity leakage, please use it with proper guidance.
- Please keep away from other electrical equipment when using.
- The product contains small parts, take care to prevent swallowing.
- Do not disassemble or repair this product without permission, otherwise it may cause device failure.
- The mobile version product contains a lithium battery, which should be avoided from being exposed to high temperatures and preventing short circuits and ensure the correct charging to prevent potential fire.

#### ATTENTIONS

- Do not place this product in a high place to prevent pet safety issues caused by falling of the product, and to prevent pets from tipping over the product.
- Please keep the amount of water between "MIN" and "MAX".
- The installation position should be away from rotating or swinging objects (such as electric fans, swaying leaves, drying clothes in the wind, etc.) to avoid malfunction.
- Please place the device on a firm, flat surface.
- The water tank and pump (need to be removed first) can be washed, and the buttons, pump head and other parts are not washable.
- If a child is using this device, please ensure that it is used under the guidance of an adult.
- This product shall not be repaired by anyone other than the maintenance personnel.
- Parts that contact with water, such as tank and pump, are recommended to be cleaned once a week.
- The product has been tested by the factory, and it is normal to have a little water stain on the product.

1

### COMPONENTS



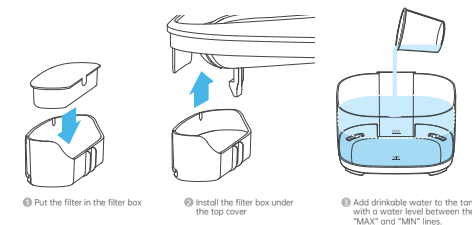
2

### PARAMETERS

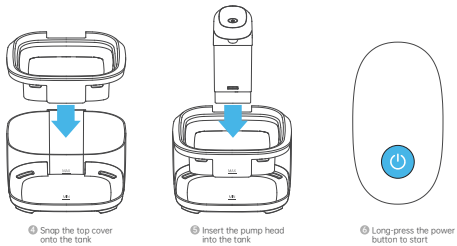
Product model:	F1	Filter replace cycle:	30 days
Product name:	Smart Pet Water Fountain	Filter material:	PC, ABS
Rated voltage:	DC 5V	Main material:	3.7V/5000mAh (Mobile Version Only)
Maximum current:	1A	Battery:	
Wi-Fi:	802.11 b/g/n (Wi-Fi Version Only)	Product size:	185mmx220mmx230mm
Noise:	< 30dB	Package size:	240mmx250mmx160mm (0.01m³)
Tank capacity:	108oz / 3.2L	N.W./G.W.:	1.1kg / 1.4kg

Packing list: Tank & Top Cover\*1, Pump Head Component\*1, Water Tray\*1 (Optional), Power Cable\*1, Filter\*1, User Manual\*1

### ASSEMBLING



3



CONTROL PANEL & APP

Radar Sensing LED

Periodic LED

Power

Ring LED

Long-press: Power on/off

Click: Set pump mode

Double click: Set Wi-Fi

Radar Sensing Mode

When it senses an object approaching within 100" of the front and a distance of 15.2 meters, it will automatically pump water and stop after the object leaves.

Periodic Mode

Pump water for 15 seconds at set intervals

Continuous Mode

The fountain always pump water (available for mobile version when recharging)

Radar Sensing Mode

Periodic Mode

Continuous Mode

Red Ring LED Flashing

Recharging or Wi-Fi Setting

\*Operations related to Wi-Fi and the App are only supported for Wi-Fi version products.

Scan the QR code attached at the end of this manual, download the "MagicScoop" App, register an account, and then follow the App prompts to connect App.

4

CLEAN PUMP

CLEAN DEVICE

- It is recommended to clean the filter and water fountain once a week.
- When cleaning the filter, rinse directly with clean water and do not use detergent.
- It is recommended to replace the filter once a month, only use the filter specified by the manufacturer.
- This product is not dishwasher safe.
- Turn off the power before cleaning, and don't pierce the water pressure sensor with sharp objects.
- The pump head contains electronic components except the pump and cannot be immersed in water!

5

TROUBLESHOOTINGS

Trouble Description	Proposed Solution
The pump does not pump water	Check whether water is sufficient, add water in the tank
	Check whether the pump impeller is blocked, please clean it
	Shake the water fountain to remove the air from the pump
The red ring light is always on	Lack of water or low battery (Mobile Version Only, recharging for 6-8 hours)
	Tilted device (Wi-Fi Version Only)
The blue light loops on	Sensor failure (Wi-Fi Version Only)
The pump's water volume is small The pump makes noise	1. Check whether the device is installed correctly
	2. Check whether the pump impeller is blocked, please clean it
	3. Check whether hair entering the pump, please clean the pump

WARRANTY TERMS

One Year Non-Transferable Limited Warranty.  
Complete details can found at [magicscoop.com](http://magicscoop.com).

CUSTOMER SERVICE

If you have any questions or need help, please contact us via the methods below

1. Visit [www.magicscoop.com](http://www.magicscoop.com) for help
2. Get customer service through original product purchase channels
3. Presale/After-sale Email: [support@magicscoop.com](mailto:support@magicscoop.com)
4. Customer Care Center: 3154 Glendale Blvd Suite 1097 Los CA 90039

6

FCC Warning

This device complies with part 15 of the FCC Rules. Operation is subject to the following two conditions: (1) This device may not cause harmful interference, and (2) this device must accept any interference received, including interference that may cause undesired operation.

Note: This equipment has been tested and found to comply with the limits for a Class B digital device, pursuant to part 15 of the FCC Rules. These limits are designed to provide reasonable protection against harmful interference in a residential installation. This equipment generates, uses and can radiate radio frequency energy and, if not installed and used in accordance with the instructions, may cause harmful interference to radio communications. However, there is no guarantee that interference will not occur in a particular installation. If this equipment does cause harmful interference to radio or television reception, which can be determined by turning the equipment off and on, the user is encouraged to try to correct the interference by one or more of the following measures:

- Reorient or relocate the receiving antenna.
- Increase the separation between the equipment and receiver.
- Connect the equipment into an outlet on a circuit different from that to which the receiver is connected.
- Consult the dealer or an experienced radio/TV technician for help.

Note: The G-Series is not responsible for any changes or modifications not expressly approved by the party responsible for compliance. Such modifications could void the user's authority to operate the equipment.

The device has been evaluated to meet general RF exposure requirements. To maintain compliance with FCC's RF exposure guidelines, the distance must be at least 20 cm between the radiator and your body, and fully supported by the operating and installation.

This manual is subject to change without notice. V2.2  
[www.magicscoop.com](http://www.magicscoop.com) ©2025 MagicScoop Technologies Inc.

7