

PROGRAMMABLE DIP SWITCH REMOTE CONTROLS

TX545

Introduction

The 811LMX is programmable DIP switch remote controls for use with LiftMaster commercial products using Security+ 2.0® Encrypted DIP, as well as older 315 MHz DIP or 390 MHz DIP devices.
The remote control default setting is Security+ 2.0®.

The images throughout this manual are for reference only and your product may look different.



Programming

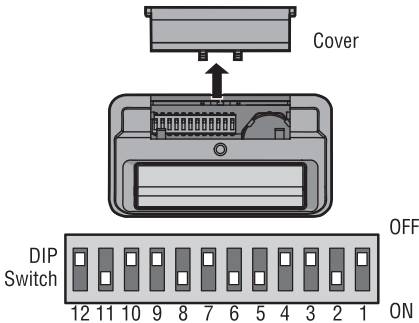
Step 1: Set the DIP Switches

- 1 Slide the cover open to access the DIP switches.
- 2 Use a pen or screwdriver to slide the DIP switches to any position you want (ON or OFF).

NOTE: If you are 'matching' the DIP switch setting from an existing 61LM or 361LM, your original remote setting cannot be using ANY of the center '0' settings.

If your original remote does have any '0' settings, please select a new DIP setting on your 811LMX and program it into your commercial receiver.

Any future 811LMX remotes will copy this setting and will be programmed to the appropriate Security Type.

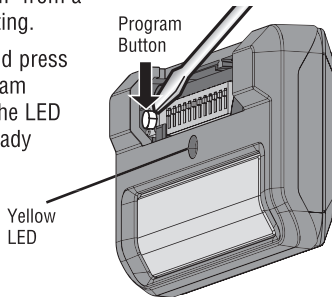


Step 2: Select the Security Type

NOTE: If the device you use with this remote is Security+ 2.0® Encrypted DIP, skip this step and go to Step 3: Program the Remote to a Device.

Follow these steps to select 315 MHz DIP, 390 MHz DIP or to reset the remote to Security+ 2.0® Encrypted DIP from a different setting.

- 1 Locate and press the Program Button. The LED glows steady Yellow.



- 2 Press any remote control button the number of times that corresponds to the security type for your device.

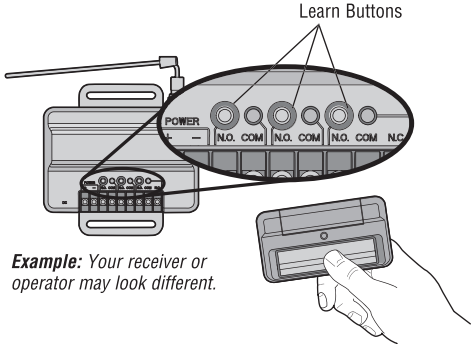
# OF PRESSES	DEVICE SECURITY TYPE
1	Security+ 2.0®
2	315 MHz DIP
3	390 MHz DIP

- 3 Press and release the Program Button until the LED on the front of the remote turns off.

Step 3: Program the Remote to a Device

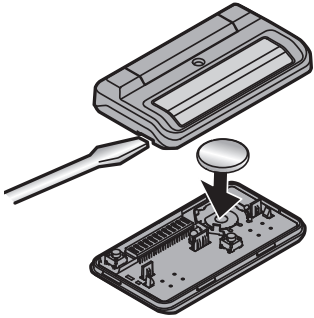
See your LiftMaster device's manual for programming.

- 1 Press and release the LEARN button on your device.
- 2 Within 30 seconds press and hold the button on the remote control that you wish to program to the device.
- 3 Test by pressing the remote button you just programmed. The operator or gate activates.



The Remote Control Battery

The lithium battery should produce power for up to 3 years. To replace battery:



Replacement Parts

Visor Clip	K029B0137
3V CR2032 lithium Battery	K010A0020

FCC Warning

This device complies with part 15 of the FCC Rules. Operation is subject to the following two conditions: (1) This device may not cause harmful interference, and (2) this device must accept any interference received, including interference that may cause undesired operation.

Any Changes or modifications not expressly approved by the party responsible for compliance could void the user's authority to operate the equipment.

Note: This equipment has been tested and found to comply with the limits for a Class B digital device, pursuant to part 15 of the FCC Rules. These limits are designed to provide reasonable protection against harmful interference in a residential installation. This equipment generates uses and can radiate radio frequency energy and, if not installed and used in accordance with the instructions, may cause harmful interference to radio communications. However, there is no guarantee that interference will not occur in a particular installation. If this equipment does cause harmful interference to radio or television reception, which can be determined by turning the equipment off and on, the user is encouraged to try to correct the interference by one or more of the following measures:

- Reorient or relocate the receiving antenna.
- Increase the separation between the equipment and receiver.
- Connect the equipment into an outlet on a circuit different from that to which the receiver is connected.
- Consult the dealer or an experienced radio/TV technician for help.

The device has been evaluated to meet general RF exposure requirement. The device can be used in portable exposure condition without restriction.