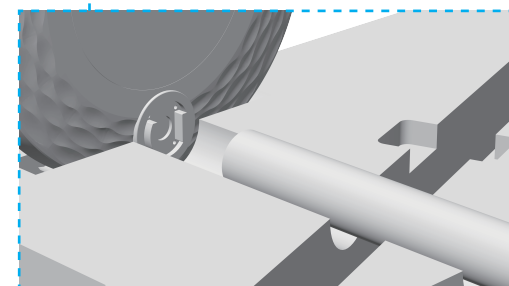
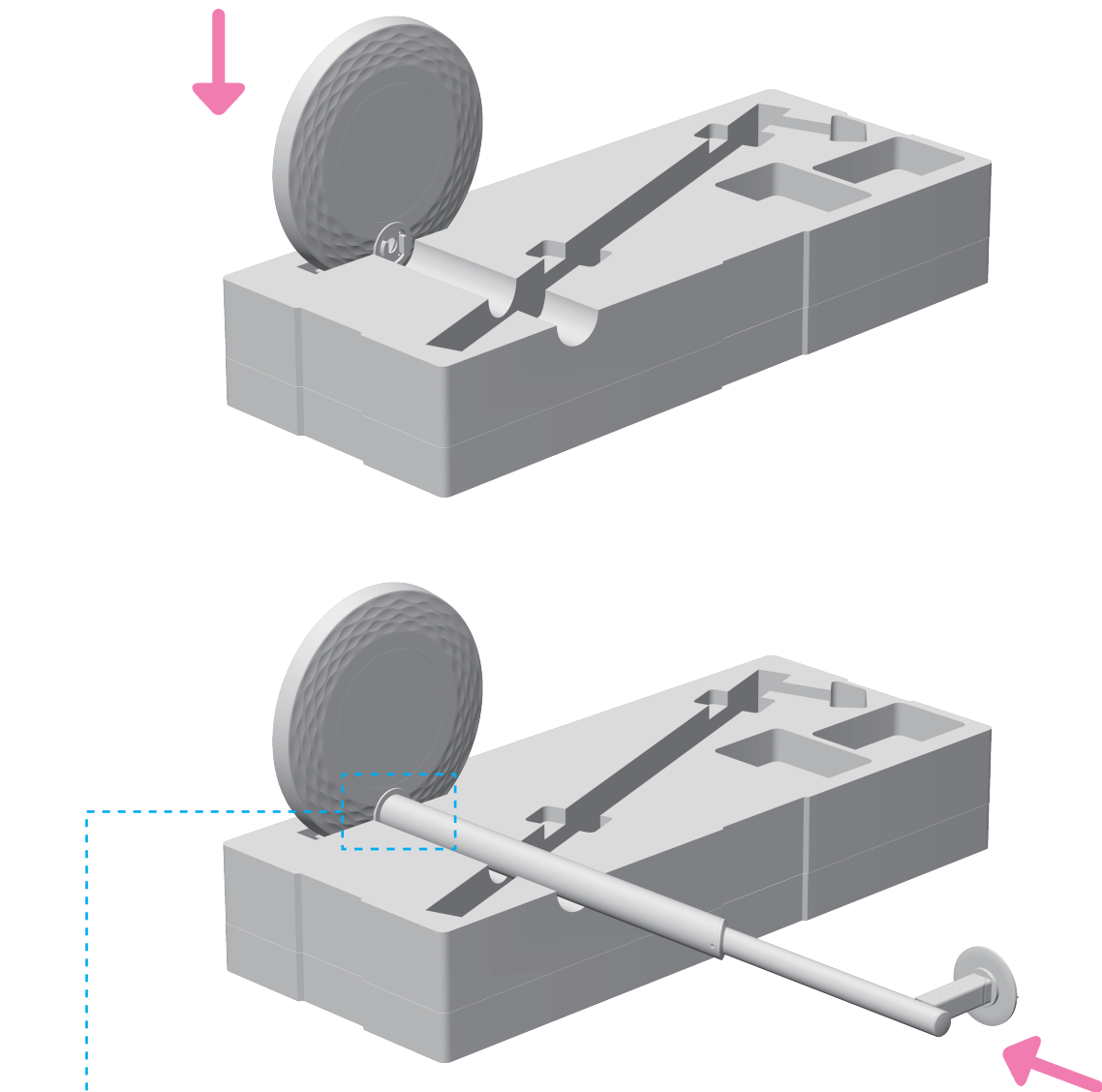


User Installation Guide

- 2** Insert the [mobile power base] into the designated position of the first layer, align the bulge of base with the slots, and then insert 【metal lifting rod】into the 【mobile power base】.

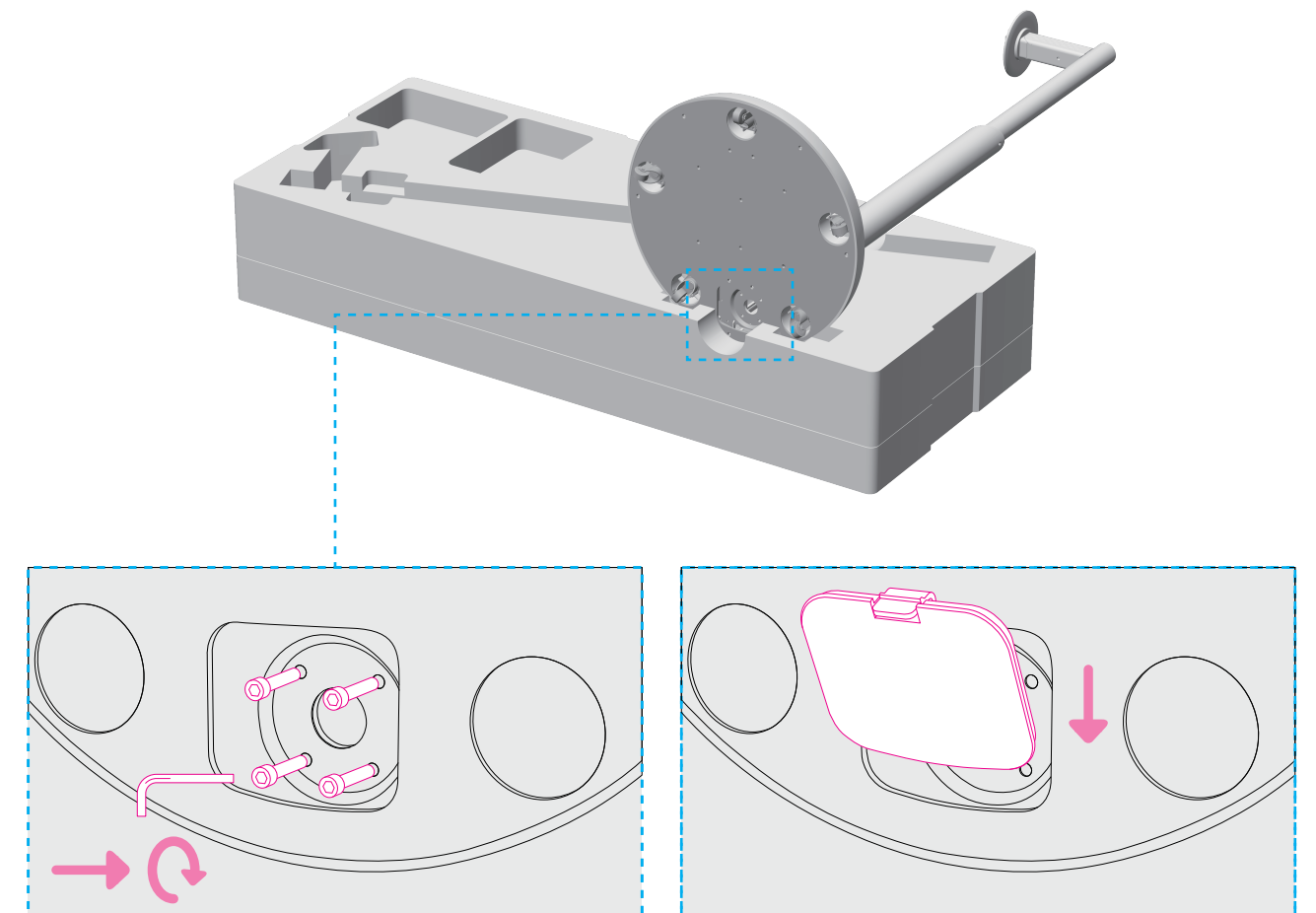


Align the positioning slot and insert

Note:
Please fasten the metal lifting rod here, in order to fasten the set screws in the following steps.

User Installation Guide

- 3** Find the 【installation tools】 in the package, take out the hex wrench and four hexagon screws, and rotate the four screws clockwise at the bottom of 【mobile power base】 to fasten them.
Install the bottom cover in the direction indicated by the arrow.



Note:

- Firstly, fasten the two diagonal screws, and then fasten the other two screws in the staggered form, to complete this step more easily.
- Install the four hexagon screws, and then connect the corresponding two terminal wires.