

# Slurpee Punk Bunny Mini Speaker

Model: 257ESPBMS

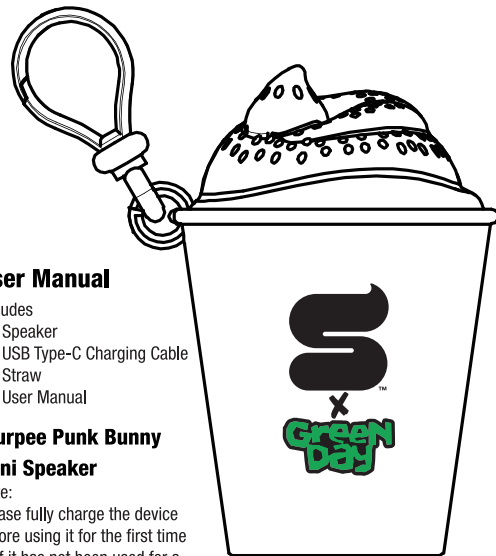


## User Manual

Includes  
1 x Speaker  
1 x USB Type-C Charging Cable  
1 x Straw  
1 x User Manual

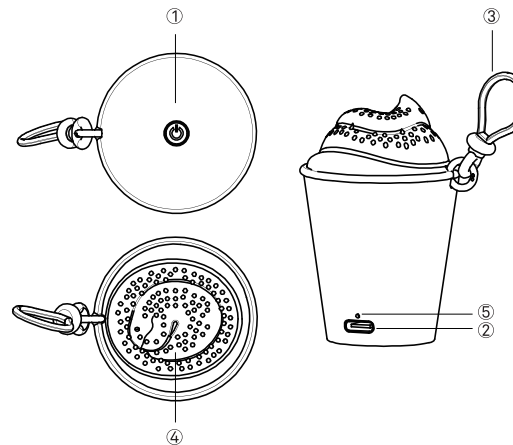
## Slurpee Punk Bunny Mini Speaker

Note:  
Please fully charge the device  
before using it for the first time  
or if it has not been used for a  
long time.



Thank you for your purchase. Please read this user manual carefully before using the product and retain for future reference.

## (1)Product Diagram



- ① — Power On/Off
- ② — Charging Port
- ③ — Hanging Hook
- ④ — Speaker Horn Hole
- ⑤ — LED Indicator

## Charging the device

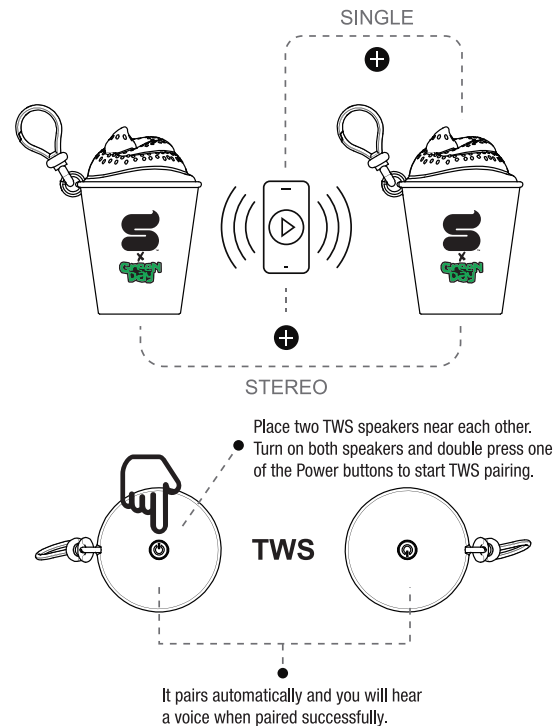
- Carefully plug the USB type-C connector of the charging cable into the device's charging port ②.
- Plug the USB connector of the charging cable into the USB port of your computer or USB charger.
- The charging case LED indicator ⑤ light up in Red when the device is charging.
- Once charging is completed, the charging case LED indicator ⑤ turns off and the device automatically stops charging.
- Unplug the charging cable from the device, which is now ready for use.
- If the battery level is low, a voice warning will appear, indicating the battery needs to be recharged.

## Powering the device ON/OFF

- To power ON, long press power button ① for 3 seconds to turn the device on. Once powered ON, the LED indicator ⑤ will flash Blue, indicating that the device is in pairing mode.
- To power OFF, long press power button ① for 3 seconds to turn the device off.

### Making a BT connection (pairing)

- Long press power button ① for 3 seconds to turn the device on.
- The LED indicators ⑤ will flash blue, indicating the device is now in pairing mode.
- Keep the device and your BT enabled appliance within 1 metre (3 ft) of each other during the BT pairing process.
- Make your mobile phone, tablet or other BT enabled appliance search for compatible BT devices. (Make sure the BT function is turned ON).
- When your BT enabled appliance finds the device, select "KERPLUNK" from the list of found devices.
- A voice will sound, indicating successful pairing. The LED indicator ⑤ will light up.
- If a paired BT enabled appliance is in range, the device will connect automatically.
- When the device do not have a BT connection for 3 minutes, they will automatically switch OFF.



### Making TWS Connection

- Turn on both speakers and double press one of the Power buttons ① to start TWS pairing, it pairs automatically, and you will hear a voice when paired successfully.

### Cancel TWS Connection

- Double press one of the Power buttons ① to cancel TWS.

### Controls

#### Listening to music

Press the Power button ① once: play/pause.

### Specification

Bluetooth Version: BT5.4  
BT profiles: A2DP, AVRCP  
Speaker Rated Power: 3W  
Built in rechargeable battery: 300mAh, Li-Poly (1.11 Wh)  
Charging Time: 2.5 hours  
Play Time: 3.5 hours  
Operation distance: up to 10 m Max. in open space (TWS pairing distance 5m Max. in open space)

### Warning

1. Do not dispose of device in fire.
2. Waste electrical products should not be disposed of with household waste. Please recycle where facilities exist. Check with your local authority for recycle advice.
3. Keep your device and all accessories out of reach of children and animals. Small parts may cause choking or serious injury if swallowed.
4. Avoid exposing your device to extreme temperatures as this may cause damage.
5. Do not allow your device to get wet. Liquids can cause serious damage. Do not handle your device with wet hands.
6. Adjust to a comfortable volume as high volumes may damage hearing.
7. Clean with a soft, dry cloth.

### Attention

This device contains rechargeable lithium batteries.

- A. Do not hit or squeeze it or dispose of it in fire.
- B. Do not expose the device to high temperatures.
- C. Do not use the device when it is wet.

Bluetooth® products are affected by the environment and distance.

Do not use the device near any electromagnetic fields.

If the device is not used for long periods, please charge it once a month to prolong its battery life.

### FCC compliance statement

This device complies with Part 15 of the FCC Rules. Operation is subject to the following two conditions: (1) this device may not cause harmful interference, and (2) this device must accept any interference received, including interference that may cause undesired operation. Important: Changes or modifications not expressly approved by the part responsible for compliance could void the user's authority to operate the equipment. This equipment complies with FCC radiation exposure limits set forth for an uncontrolled environment. FCC Statement: NOTE: This equipment has been tested and found to comply with the limits for a Class B digital device, pursuant to part 15 of the FCC Rules. These limits are designed to provide reasonable protection against harmful interference in a residential installation. This equipment generates, uses and can radiate radio frequency energy and, if not installed and used in accordance with the instructions, may cause harmful interference to radio communications. However, there is no guarantee that interference will not occur in a particular installation. If this equipment does cause harmful interference to radio or television reception, which can be determined by turning the equipment off and on, the user is encouraged to try to correct the interference by one or more of the following measures: • Reorient or relocate the receiving antenna. • Increase the separation between the equipment and receiver. • Connect the equipment into an outlet on a circuit different from that to which the receiver is connected. • Consult the dealer or an experienced radio/TV technician for help.



FCC ID 2BNIB257ESPBMS  
Made in China

©2025 7-Eleven, Inc. All rights reserved.  
Slurpee and Slurpee S are registered  
trademarks of 7-Eleven, Inc.

© Punk Bunny Coffee  
© Caruso Foods LLC  
Green Day, Punk Bunny, and design are  
registered trademarks of Green Day, Inc.