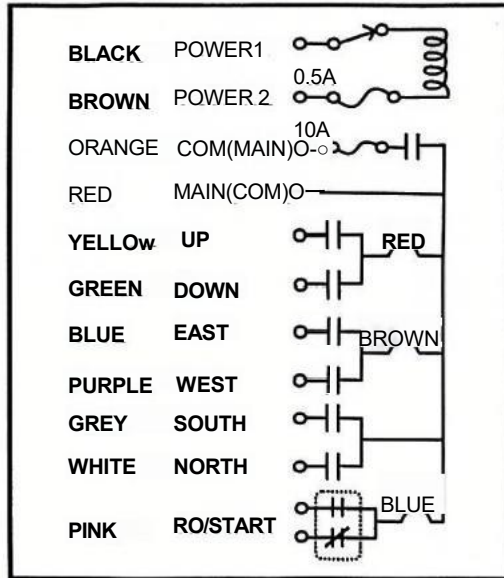


F21-E1B Remote control**Classie Crane Remote Control****WIRING DIAGRAM****PRODUCT PHOTOS****Connection method:**

- ① Line 1 and line 2 are connected to the corresponding power supply of the remote control respectively
- ② Line 3 is a public line and also connected to the power line
- ③ Line 4 is always open (if there is no always open or not open)
- ④ 5.6.7.8.9.10 corresponds to the control lines corresponding to the upper/lower/east/west/south/North

Matching method:

- ① how to match extra transmitters: pull out the CD card from the original one, and plug it into the extra transmitter to match; power on (over).
 - ② if the original transmitter doesn't work any more, pull out the CD card and plug it into the new one to match; power on (over)
- Note: after matching, the CD card finishes its tasks, leave it inside the transmitter or keep it in anywhere you could remember.

Product features:

- Has 8 function keys, of which up to 6 single speed keys, 1 only total stop
- Control points up to 8
- Battery voltage warning device, voltage is insufficient automatically shut off the circuit
- Up/down, East/West, and South/North can be set as self-locking functions
- Wirelessly match multiple receivers (transmitters)

Emitter parameter:F21-E1B	
Shell	Glass fiber reinforced nylon
Protection Class	IP65
Frequency Range	,) - "% mhz
Transmitted Power	Less than or equal to 10dbm
Transmitter Power Supply	2 alkaline#5 batteries
Security Code	32-bit (4.3 billion groups)
Temperature Range	-40°C to +85°C
Control Distance	200 meters

Receiver parameter:F21-E1B	
Shell	Glass fiber reinforced nylon
Protection Class	IP65
Frequency Range	,) - "% HZ
Receiver Sensitivity	-110dBm
Receiver Power Supply	181065V, 24V/36V/220V/380V (Optional)
Output Contact Capacity	8amp fully sealed relay output
Control Cable Length	1.1m
Security Code	32-bit (4.3 billion groups)
Temperature Range	°C

Suitable For: single hook, single speed electric hoist or hoist driving and 8 contacts below the industrial control remote control.



FCC Warning:

This equipment has been tested and found to comply with the limits for a Class B digital device, pursuant to part 15 of the FCC Rules. These limits are designed to provide reasonable protection against harmful interference in a residential installation. This equipment generates, uses and can radiate radio frequency energy and, if not installed and used in accordance with the instructions, may cause harmful interference to radio communications. However, there is no guarantee that interference will not occur in a particular installation. If this equipment does cause harmful interference to radio or television reception, which can be determined by turning the equipment off and on, the user is encouraged to try to correct the interference by one or more of the following measures:

- Reorient or relocate the receiving antenna.
- Increase the separation between the equipment and receiver.
- Connect the equipment into an outlet on a circuit different from that to which the receiver is connected.
- Consult the dealer or an experienced radio/TV technician for help.

Caution: Any changes or modifications to this device not explicitly approved by manufacturer could void your authority to operate this equipment.

This device complies with part 15 of the FCC Rules. Operation is subject to the following two conditions:

(1) This device may not cause harmful interference, and (2) this device must accept any interference received, including interference that may cause undesired operation.

This equipment complies with FCC radiation exposure limits set forth for an uncontrolled environment. This equipment should be installed and operated with minimum distance 0cm between the radiator and your body.