


尺寸: 80X120MM

Frayo

SMART DOG TRAINING COLLAR X03



USER MANUAL
(Please read this manual before beginning)

Welcome

You and your pet are the most precious of friends. We're genuinely eager to learn more about how our dog training system has contributed to your easy and efficient training success. If you'd like to share your experience with our small family-owned company or if you have any questions or need assistance, please don't hesitate to reach out. We're more than happy to help you in any way we can!

WARNING

Important Safety Information

Not suitable for aggressive dogs. Aggressive dogs can cause severe injury or death to their owners and others.

If you are not sure that this product is right for your dog, please talk to your veterinarian or a certified trainer.

This device contains Lithium batteries; never incinerate, puncture, or charge with an inappropriate charger. Fire, explosion, property damage, or bodily harm may occur if this warning is not followed.

CAUTION

1. Please follow the manual to properly wear the receiver collar.
2. A receiver collar worn for too long or made too tight on your pet's neck may cause skin damage, ranging from redness to pressure ulcers. This condition is commonly known as bed sores.
3. When possible, reposition the collar on your pet's neck every 1-2 hours.
4. Check the contact area daily for any signs of rash or sores. If a rash or sore is found, discontinue use of the receiver collar until the skin has healed.
5. If the condition persists beyond 48 hours, see your veterinarian.
6. It is forbidden for children to play with this product, please place the product out of reach of children.

Package List

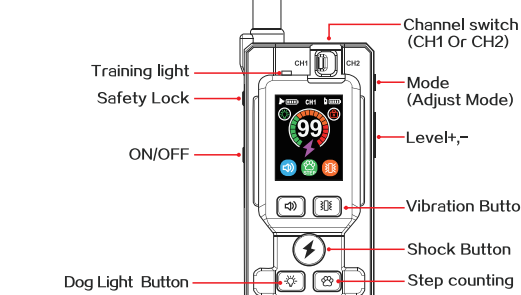


Product Specification

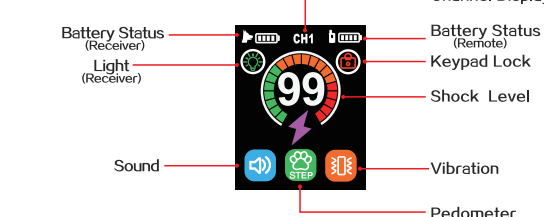
Collar Receiver			
Battery	300mAh/3.7V	Input voltage	DC5V/1A
Standby time	60 day (training mode)	Charging Time	Full Charger 2hr
Wireless frequency	433.92MHz	Operating temperature	-10°C ~ +50°C
Collar length	25in/62cm	Storage temperature	-20°C ~ +60°C
Ingress Protection	IP67	Product Dimension	66*42*20mm (L*W*H)
Remote control			
Battery	500mAh/3.7V	Input voltage	DC5V/1A
Standby time	60 day (training mode)	Charging Time	Full Charger 2hr
Wireless frequency	433.92MHz	Operating temperature	-10°C ~ +50°C
Wireless distance (open ground)	3300ft	Storage temperature	-20°C ~ +60°C
Ingress Protection	IP67	Product Dimension	156*65*22mm (L*W*H)

Product Description

Remote Control

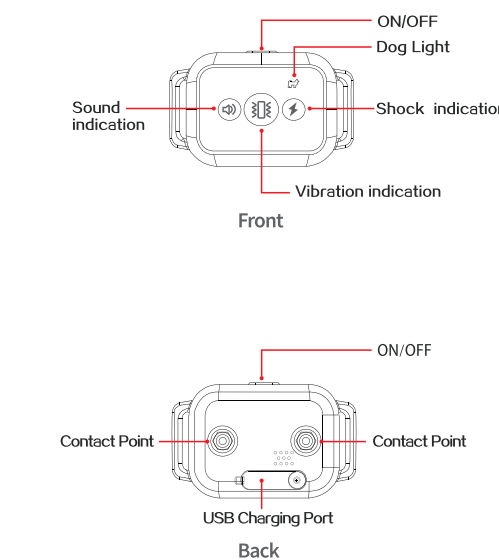


Digital Screen Content



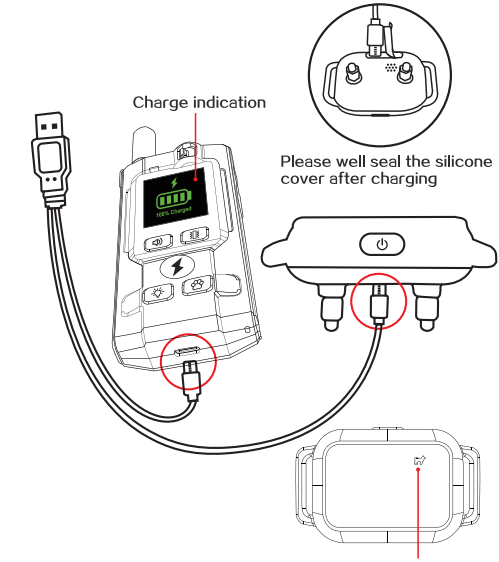
Product Description

Collar Receiver



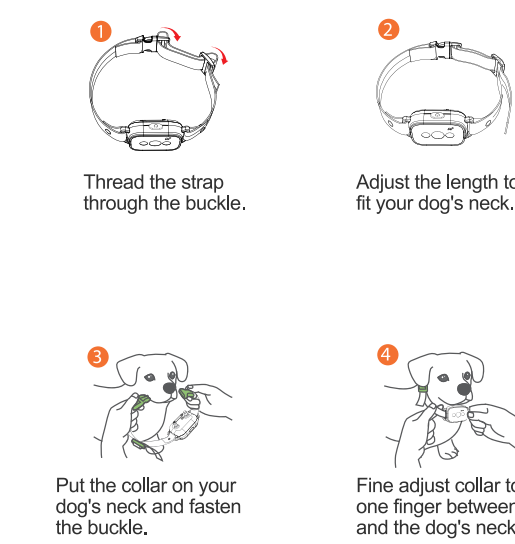
How to Charge

Charging instructions (2h charging time)
When charging is completed, the battery icon will stop flashing and show a full status. Charging takes about 2 hours.

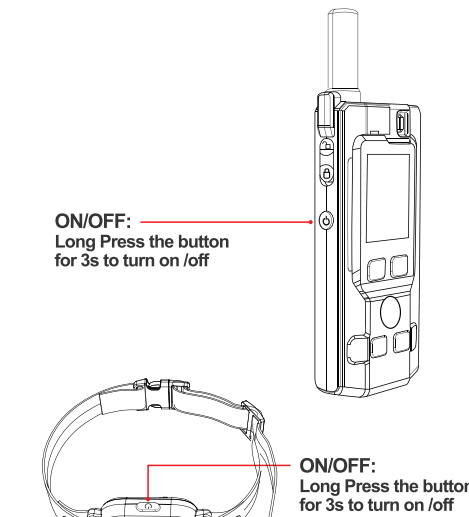


How to Wear a Collar

The collar ranges from 20 cm to 62 cm (8 inches to 25 inches). Please wear it as follows.



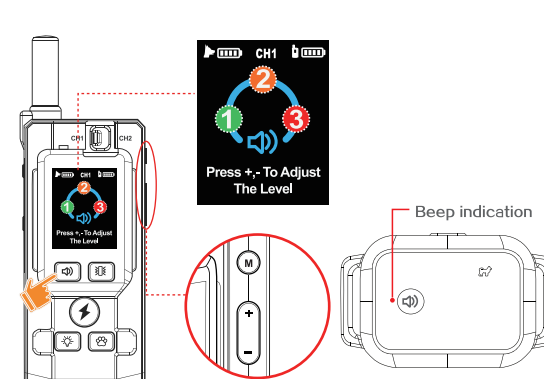
How to Power On/Off



Training Guide

Operation of Beep Mode

Short press the [M] button of the transmitter, the receiver will beep for 1 second; long press the button, the receiver will stop working after beeping for 10 consecutive times.



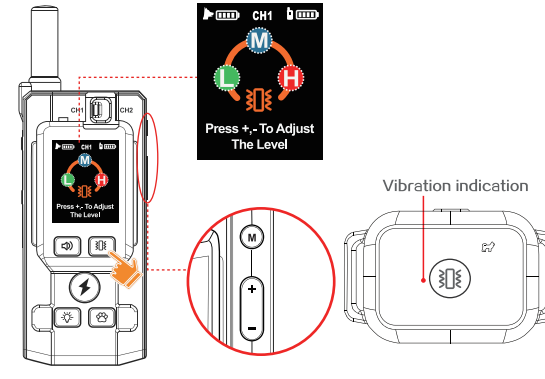
How to adjust the level

- When in Beep mode (or press "M" to switch to the Beep mode)
- Press the "+/-" button to adjust the level.

Training Guide

Operation of Vibration Mode

Short press the [M] button, the receiver vibrates for 1 second; long press the button, the receiver will stop working after vibrating continuously for 10 times.



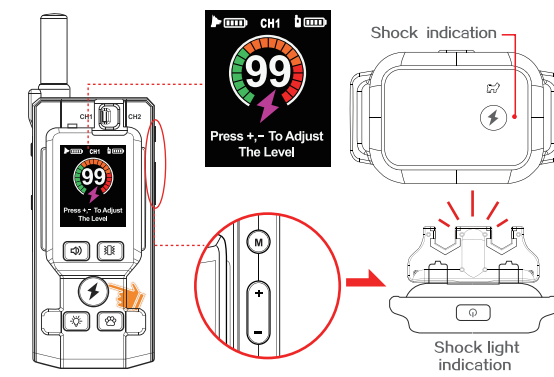
How to adjust the level

- When in Vibration mode (or press "M" to switch to the Vibration mode)
- Press the "+/-" button to adjust the level.

Training Guide

Operation of shock Mode

Short press the [M] button, the receiver to shock once at the preset level; long press the button, the receiver will stop working after shock continuously for 10 times.



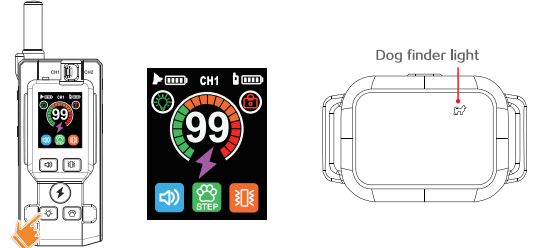
How to adjust the level

- When in Shock mode (or press "M" to switch to the Shock mode)
- Press the "+/-" button to adjust the level.

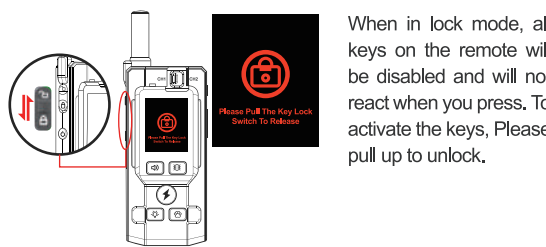
Training Guide

Dog finder light

Short press the [M] button to turn on the receiver's dog light. Short Press the button again, and the dog light is flashing. Short press the button for the third time to turn off the receiver's dog light.

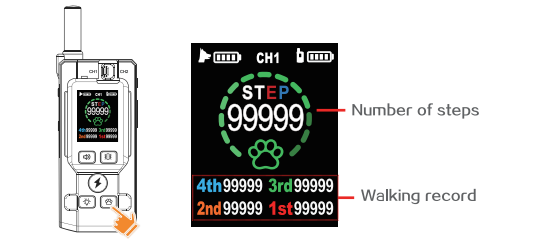


Safety Lock



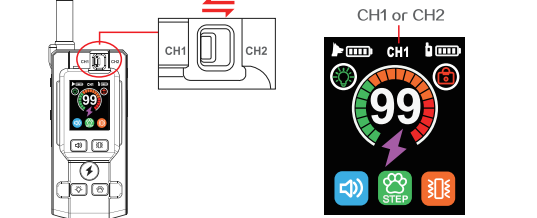
Pedometer

Short press the [M] button to enter the pedometer. Short Press the button again, and Start Counts the number of steps. Press and hold the button for 2 seconds to exit the pedometer. The pedometer has four records.



Channel Selection

The device supports training 2 dogs with only 1 remote. Pull the switch to switch between the two dogs.



Pairing Instructions

(Note: You can skip this step as the device is paired at the factory.)
◇ Short press receiver switch twice in succession (within 1 second) until three lights flash quickly
◇ pull the channel switch to select the channel (CH1 Or CH2).
◇ Press the remote any buttons of sound/vibration/shock to pair
◇ Pairing is successful. Receiver indicator light

Pairing the remote with the receiver

Short press twice in succession (within 1 second) until three lights flash quickly



Product Features

- Pedometer tracks steps, promoting your pet's health
- 5 Training Modes (Step Counting, Dog Light, Beep, Vibration, Shock)
- 3 Levels (L-M-H) vibration adjustable
3 Levels (1-2-3) Beep adjustable
0-99 shock adjustable for customized training
- Lightweight design reduces the weight of the dog
- IP67 dustproof and waterproof receiver
- Remote Range 3300ft
- Color eye protection screen + Digital display
- Support 2 Receiver Collars with One Remote
- Remote control displays the battery levels of two devices

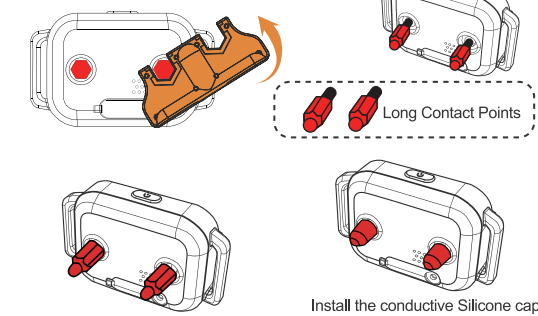
Use of the Test Board Tool

A: Electric shock test

1. Make sure the Remote and Receiver Collar is on.
2. Hold the Test Light tool contacts to the Contact Points.
3. Press a shock button on the Remote Transmitter. The Test Board will be lighted.

B: As a tool to tighten or loosen the contact points

1. For dogs with shorter coats, use 2pcs shorter contact points.
2. For dogs with thicker coats, use 2pcs longer contact points.
3. Install the conductive Silicone onto the contact point to make it softer. It may be better for your dog's skin.



Certification Statements



This device complies with Part 15 of the FCC Rules. Operation is subject to the following two conditions:

- (1) This device may not cause harmful interference.
- (2) This device must accept any interference received, including interference that may cause undesired operation.

Warning: Changes or modifications not expressly approved by the party responsible for compliance could void the user's authority to operate the equipment.

Note: This equipment has been tested and found to comply with the limits for a Class B digital device, pursuant to Part 15 of the FCC Rules. These limits are designed to provide reasonable protection against harmful interference in a residential installation. This equipment generates uses and can radiate radio frequency energy and, if not installed and used in accordance with the instructions, may cause harmful interference to radio communications.

However, there is no guarantee that interference will not occur in a particular installation. If this equipment does cause harmful interference to radio or television reception, which can be determined by turning the equipment off and on, the user is encouraged to try to correct the interference by one or more of the following measures:

- Reorient or relocate the receiving antenna.
- Increase the separation between the equipment and receiver.
- Connect the equipment into an outlet on a circuit different from that to which the receiver is connected. Consult the dealer or an experienced radio/TV technician for help.

Certification Statements



The company declares under its own responsibility that this product complies with the basic requirements of CE (2014/30/EU) and RoHS (2011/65/EU). Without the approval of our company or the distributor, unauthorized changes or modifications to the equipment may violate the CE regulations, may cause the user to lose the right to operate the equipment, and invalidate the warranty.

Recycling Information & Battery Disposal

Please observe the regulations for electronic and electrical devices to be disposed of in the respective country. In some countries or regions, this device must be recycled. If this device is no longer required, it must not be disposed of with normal municipal waste. Separate collection of spent batteries is required in many regions; check the regulations in your area before discarding spent batteries. For more recycling information, please refer to local regulations.

Troubleshooting

Fault Phenomenon	Analysis	Method of exclusion
Can't power on	1. Low battery 2. Can't be power on after charging	1. Please charge and try again when fully charged 2. Please contact the dealer for replacement
Can not be charged	1. When charging, the red light of the receiver does not light up or the screen of the transmitter does not light up 2. When charging, the red light of the receiver is on or the screen of the transmitter is on, but the battery cannot be charged	1. Please check whether the charging cable interface is in good contact 2. Please contact the dealer for replacement
The receiver doesn't respond to the operation of the transmitter	1. The receiver is not power on 2. Transmitter channel number error 3. Transmitter and receiver are not paired 4. Receiver is damaged	Please contact the dealer for an exchange

Training Tips

1. Combine with Positive Reinforcement

Pair the collar's feedback with treats or praise to help your dog learn correct behaviors more quickly. This approach makes training a positive experience and ensures that your dog isn't only responding to the collar but also getting encouragement from you.

2. Use Sound or Vibration Modes First

Many dogs respond well to these gentler cues, and static correction should be considered only if the dog completely ignores sound and vibration feedback.

3. Adjust the Intensity Appropriately

best to start at the lowest setting and gradually increase until you find the right level. Too strong a setting can make your dog anxious or uncomfortable.

4. Limit Usage Time

Limit collar use to training sessions and avoid using it for extended periods. This helps prevent over-reliance on the collar and minimizes any discomfort. After training, remove the collar to give your dog some "free" time.

5. Stay Calm and Consistent

Maintain a patient, consistent attitude throughout training, especially when your dog is new to the collar. A calm voice and steady training frequency help dogs adapt better to the collar without becoming wary of it.

CUSTOMER SUPPORT

frayoservice@outlook.com
Manufacturer: Shenzhen Xinlangjie Electronics Co., LTD
Address: 3rd floor, Building B1, Baolong Industrial Zone, No. 435, South Dalang Road, Langkou Community, Dalang Street, Longhua District, Shenzhen

