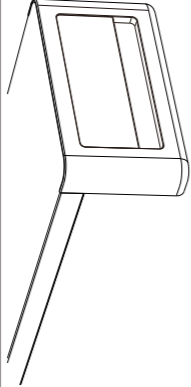
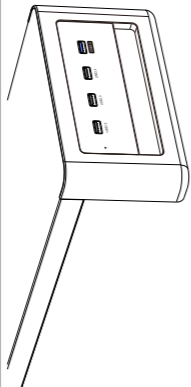
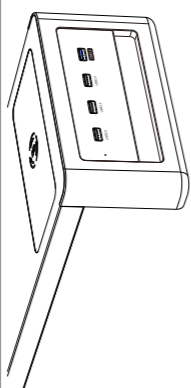
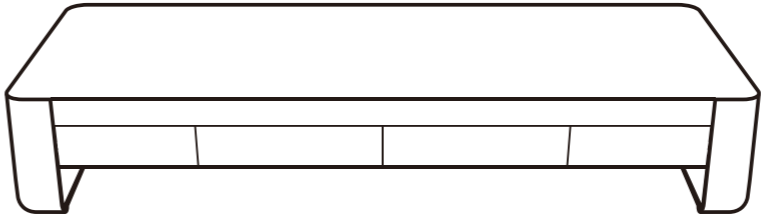


PRODUCT COMPARISON				
Mode	Basic Version	4-port HUB Version	HUB+Wireless Charging Version	
Image				
Core Features	1. Monitor Riser 2. Desktop Organization	1. Monitor Riser 2. Desktop Organization 3. USB 2.0 Data Transmission	1. Monitor Riser 2. Desktop Organization 3. USB 3.0 Data Transmission 4. Qi Phone Wireless Charging	
Support Features	/	Support USB2.0 / USB3.0 data transmission.	Support Qi 15W Max wireless charging; Support USB2.0 / USB3.0 data transmission.	
Packing List	● Panel x 1 ● Supporting Leg x 2 ● Drawer x 2 ● Quick user guide x 1	● Panel x 1 ● Supporting Leg x 1 ● Supporting Leg(USB 2.0*3+USB 3.0*1) x 1 ● Drawer x 2 ● Power Cable x 1 ● Quick user guide x 1	● Panel(with wireless charger) x 1 ● Supporting Leg x 1 ● Supporting Leg(USB 2.0*3+USB 3.0*1) x 1 ● Drawer x 2 ● Power adapter x 1 ● Quick user guide x 1	

Multi-functional Monitor Stand Riser

Quick User Guide | PN : ZGJ Series

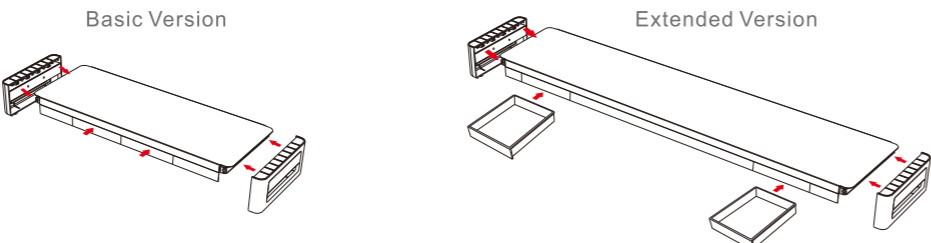


Please read this user guide carefully before assembly and keep it for future reference.

1. Product Parameters

Name: Multi-functional Monitor Stand Riser
Model: ZGJ Series
Material: Metal+ABS+PC
Size: 546 x 200 x 111mm(Basic Version) / 984 x 200 x 111mm(Extended Version)
21.5 x 7.87 x 4.37in(Basic Version) / 38.74 x 7.87 x 4.37in(Extended Version)
(Drawer storage size:140 x 159 x 28mm / 5.51 x 6.26 x 1.1in)

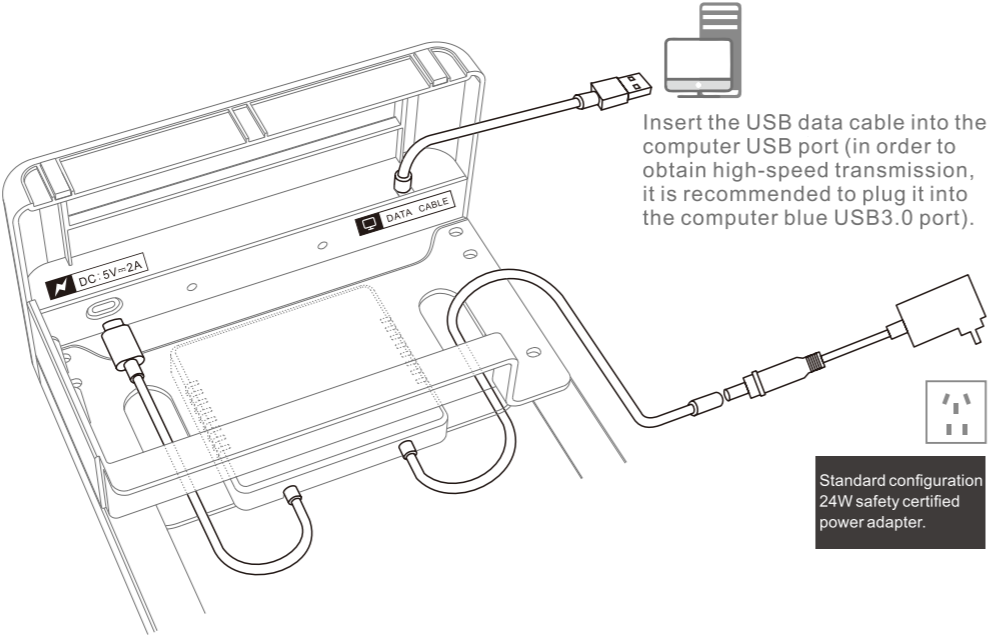
2. Installation



Take out the supporting legs from the package and insert them into the plastic slots on both sides of the metal panel.
Make sure the supporting legs are firmly and properly installed, then the monitor stand is ready to go.

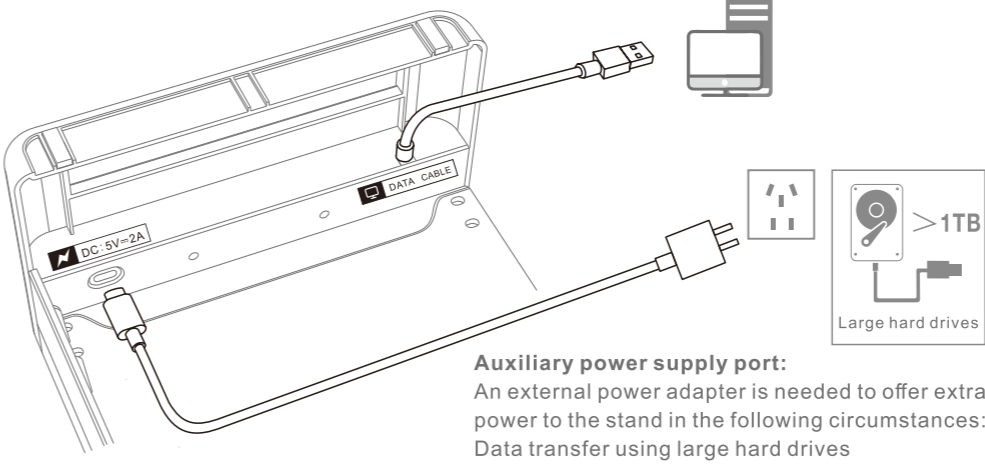
3. Wiring Diagram

3.1. HUB+Wireless Charging Version



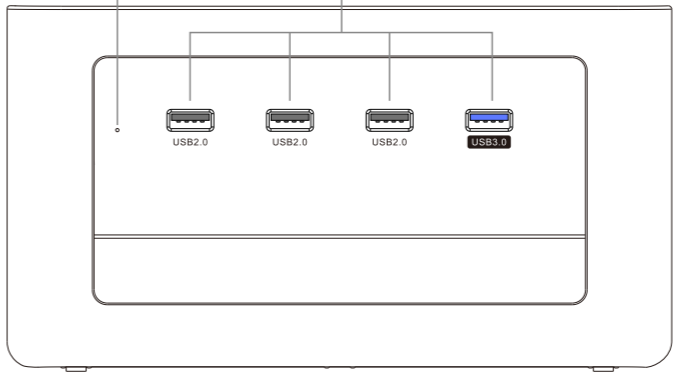
3.2. 4-port HUB Version

Insert the USB data cable into the computer USB port (in order to obtain high-speed transmission, it is recommended to plug it into the computer blue USB3.0 port).



The solid blue light indicates the monitor stand is powered on.

It supports devices such as keyboard, mouse, mobile phone, hard disk, Bluetooth receiver etc.



NOTICE

1. Due to the continuous improvement of our products, some parameters and setting steps may be different with what's in this manual, please refer to the actual product you received.
2. The technical parameters such as product features, parameters, usage, design and all other information in this manual are modified if necessary without prior notice. Thanks for your understanding.

FCC Warning

This device complies with part 15 of the FCC rules. Operation is subject to the following two conditions: (1) this device may not cause harmful interference, and (2) this device must accept any interference received, including interference that may cause undesired operation.

Changes or modifications not expressly approved by the party responsible for compliance could void the user's authority to operate the equipment.

NOTE: This equipment has been tested and found to comply with the limits for a Class B digital device, pursuant to part 15 of the FCC Rules. These limits are designed to provide reasonable protection against harmful interference in a residential installation. This equipment generates uses and can radiate radio frequency energy and, if not installed and used in accordance with the instructions, may cause harmful interference to radio communications. However, there is no guarantee that interference will not occur in a particular installation. If this equipment does cause harmful interference to radio or television reception, which can be determined by turning the equipment off and on, the user is encouraged to try to correct the interference by one or more of the following measures:

- Reorient or relocate the receiving antenna.
- Increase the separation between the equipment and receiver.
- Connect the equipment into an outlet on a circuit different from that to which the receiver is connected.
- Consult the dealer or an experienced radio/TV technician for help.

Radiation Exposure Statement

This equipment complies with FCC radiation exposure limits set forth for an uncontrolled environment. This equipment should be installed and operated with minimum distance 20cm between the radiator and your body.